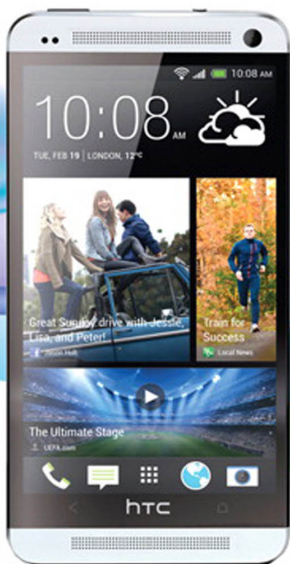


My HTC One®



que

Craig James Johnston
Guy Hart-Davis

FREE SAMPLE CHAPTER



SHARE WITH OTHERS

My HTC One®

Craig James Johnston
Guy Hart-Davis

que®

800 East 96th Street,
Indianapolis, Indiana 46240 USA

My HTC One®

Copyright © 2014 by Pearson Education, Inc.

All rights reserved. No part of this book shall be reproduced, stored in a retrieval system, or transmitted by any means, electronic, mechanical, photocopying, recording, or otherwise, without written permission from the publisher. No patent liability is assumed with respect to the use of the information contained herein. Although every precaution has been taken in the preparation of this book, the publisher and author assume no responsibility for errors or omissions. Nor is any liability assumed for damages resulting from the use of the information contained herein.

ISBN-13: 978-0-7897-5262-8

ISBN-10: 0-7897-5262-X

Library of Congress Control Number: 2013953112

Printed in the United States of America

First Printing: December 2013

Trademarks

All terms mentioned in this book that are known to be trademarks or service marks have been appropriately capitalized. Que Publishing cannot attest to the accuracy of this information. Use of a term in this book should not be regarded as affecting the validity of any trademark or service mark.

Warning and Disclaimer

Every effort has been made to make this book as complete and as accurate as possible, but no warranty or fitness is implied. The information provided is on an “as is” basis. The author and the publisher shall have neither liability nor responsibility to any person or entity with respect to any loss or damages arising from the information contained in this book.

Special Sales

For information about buying this title in bulk quantities, or for special sales opportunities (which may include electronic versions; custom cover designs; and content particular to your business, training goals, marketing focus, or branding interests), please contact our corporate sales department at corpsales@pearsoned.com or (800) 382-3419.

For government sales inquiries, please contact governmentsales@pearsoned.com.

For questions about sales outside the U.S., please contact international@pearsoned.com.

Editor-in-Chief

Greg Wiegand

Acquisitions Editor

Michelle Newcomb

Development Editor

Brandon Cackowski-Snell

Managing Editor

Sandra Schroeder

Project Editor

Mandie Frank

Copy Editor

Barbara Hacha

Indexer

Erika Millen

Proofreader

Sarah Kearns

Technical Editor

Christian Kenyeres

Editorial Assistant

Cindy Teeters

Designer

Mark Shirar

Compositor

Mary Sudul

Contents at a Glance

	Prologue: Getting to Know Your HTC One	1
Chapter 1	Connecting to Bluetooth, Wi-Fi, and VPNs	45
Chapter 2	Customizing Your HTC One	87
Chapter 3	Browsing the Web	115
Chapter 4	Email	135
Chapter 5	Google Now and Navigation	171
Chapter 6	Working with Date, Time, and Calendar	189
Chapter 7	Contacts	225
Chapter 8	Phone and Instant Messaging	265
Chapter 9	Audio, Video, Photos, and Movies	293
Chapter 10	Books and Magazines	355
Chapter 11	Working with Android Apps	381
Chapter 12	Maintaining and Troubleshooting Your HTC One	397
	Index	413

Online Element: Tracking Your Tasks

Online Element: Use Your HTC One as a Remote Control

Table of Contents

Prologue

Getting to Know Your HTC One 1

Your HTC One's External Features	2
Front	2
Back	4
Top	5
Bottom.....	5
First-Time Setup.....	6
Fundamentals of Android 4.1.2 and HTC Sense UI.....	16
The Lock Screen	16
BlinkFeed	17
The Home Screen(s).....	19
Using Your Touchscreen	24
Using Your Keyboard.....	27
Editing Text	33
Menus	34
Switching Between Apps.....	35
Installing Synchronization Software.....	36
Installing Google Music Manager (Apple Mac)	36
Installing Google Music Manager (Windows).....	38
Configuring Music Manager (Windows and Apple Mac)	39

1 Connecting to Bluetooth, Wi-Fi, and VPNs 45

Connecting to Bluetooth Devices.....	45
Pairing with a New Bluetooth Device	46
Changing Bluetooth Settings	48
Changing Bluetooth Device Options	49
Wi-Fi	50
Connecting to Wi-Fi.....	50
Wi-Fi Network Options	53
Advanced Wi-Fi Options	54

Wi-Fi Direct	59
Setting Up Wi-Fi Direct	59
Using Wi-Fi Direct (the Official Way)	60
Wi-Fi Direct (Using the WiFi Shoot App)	62
Near Field Communications (NFC)	63
Enabling NFC and Android Beam	63
Using Android Beam	64
Cellular Networks and Wi-Fi Calling	67
Changing Mobile Settings	67
Changing Wi-Fi Calling Settings	70
Virtual Private Networks (VPN)	71
Adding a VPN Profile	72
Connecting to a VPN	74
Mobile Wi-Fi Hotspot	78
Starting Your Mobile Wi-Fi Hotspot	79

2

Customizing Your HTC One**87**

Change Your Wallpaper	87
Wallpaper from Gallery Pictures	89
Live Wallpaper	90
HTC Wallpaper	91
Changing Your Keyboard	91
Adding Widgets to Your Home Screens	93
Adding a Widget	94
Edit or Move a Widget	96
System Language	97
Accessibility Settings	98
Sound Settings	102
Display, Gestures, and Buttons Settings	104
Kid Mode	107
First-Time Setup	107
Further Kid Mode Configuration	111

3 Browsing the Web 115

Navigating with Chrome	115
Web Page Options.....	117
Browser Tricks	118
Browsing with Bookmarks and Other Devices	119
Browse with Bookmarks.....	120
Create a Bookmark.....	121
Create a New Bookmarks Folder.....	122
Browse with the Most Visited Sites List	123
Browse with the Other Devices List.....	124
Managing Multiple Tabs.....	125
Customizing Browser Settings	126

4 Email 135

Gmail	135
Adding a Google Account.....	136
Navigating the Gmail App	138
Composing Gmail Email.....	140
Reading Gmail Email	142
Gmail Settings	145
Email Application.....	150
Adding a Work Email Account	150
Adding a New POP3 or IMAP Account	155
Working with the Mail App	158
Navigating the Mail Application	158
Composing Email	159
Reading Email	162
Mail App Settings	165

5 Google Now and Navigation 171

Google Now	171
Setting Up Google Now	173
Google Maps.....	177
Get Directions	179
Google Maps Settings	181

Google Maps Offers.....	183
Navigation with the Car App.....	184

6 Working with Date, Time, and Calendar 189

Setting the Date and Time.....	190
Using the Clock App	192
Navigate the Clock App	192
Set and Manage Alarms	193
Use the World Clock	199
Using the Calendar App	202
Navigate the Calendar Main Screen	202
Choose Which Calendars and Task Lists to Display	204
Change Calendar Settings	206
Add a New Event	208
Respond to a Google Event Invitation.....	213
Respond to a Corporate Event Invitation	216
Propose a New Time for an Event.....	220
View Your Agenda	220
Use Quick Responses	221
Online Element: Tracking Your Tasks	

7 Contacts 225

Adding Accounts.....	225
Open the Accounts & Sync Screen.....	226
Add an Exchange ActiveSync Account.....	227
Add a LinkedIn for HTC Sense Account.....	230
Add a Flickr for HTC Sense Account	232
Navigating the People App.....	233
Browse a Contact's Data.....	235
Check a Contact's Status.....	240
Edit a Contact.....	240
Adding and Managing Contacts	248
Add a Contact from an Email	248
Add a Contact Manually	250
Add a Contact from a vCard	251

Add a Contact Using Near Field Communications 252

Manage Contacts Settings..... 253

Create Contact Groups in the People App..... 255

Change the Members of a Contact Group..... 258

Choose Which Contacts to Display..... 259

Link and Separate Contact Records..... 260

Set Up Speed Dial Numbers for Contacts 263

8

Phone and Instant Messaging 265

Phone 265

 Open and Navigate the Phone App 266

 Receive a Call 268

 Handle Missed Calls..... 270

 Place a Call 272

 Configure the Phone App 278

SMS and MMS 281

 Get to Know the Messaging App 281

 Manage Settings for the Messaging App..... 282

 Compose Messages..... 289

 Attach Files to Messages..... 291

9

Audio, Video, Photos, and Movies 293

Enjoying Music with the Music App 293

 Open and Navigate the Music App 294

 Control Playback..... 296

 Create Playlists 300

 Choose Settings for the Music App 304

Enjoying Music with Google Music..... 305

 Load Music for the Play Music App to Play 306

 Use the Music Application 311

 Work and Listen to Music 317

 Work with Playlists 318

 Listen to Music with No Wireless Coverage..... 321

Playing and Sharing Videos..... 323

 Trim a Video 326

Share Videos	327
Delete Videos	331
Taking Photos and Videos with the Camera App.....	331
Take Photos.....	331
Take Zoe Photos.....	338
Change Camera Settings.....	340
View Your Photos and Zoe Photos	344
Record Videos with the Camera App	346
Enjoying Videos with the YouTube App	347
Meet the YouTube Main Screen	348
Play a Video.....	349
Change YouTube Settings	350
Upload a Video to YouTube from the YouTube App.....	353

10**Books and Magazines****355**

Reading Books with Play Books and Kindle.....	355
Open the Play Books App and Meet Your Library	356
Get Books from the Play Store.....	358
Read Books with the Play Books App	362
Choose Options for the Play Books App.....	364
Delete a Book from Your Play Books Library	367
Install the Kindle App.....	368
Reading Magazines with Play Magazines	375
Open the Play Magazines App and Choose Your Magazines	375
Read a Magazine with the Play Magazines App	378
Choose Options for the Play Magazines App	379

11**Working with Android Apps****381**

Configuring Google Wallet.....	382
Navigating Google Play	383
Download Free Apps.....	385
Buy Apps.....	387
Manage Apps	389
Manage Google Play Settings.....	392
Keeping Apps Up to Date	394

12 **Maintaining and Troubleshooting Your HTC One** **397**

Updating Android.....	397
Optimizing the Battery	400
Looking After the Battery	400
Seeing What Is Using the Battery	402
Choosing Power-Saving Options.....	404
Applications and Memory	405
Reining In Your Data Usage.....	408
Caring for the Exterior of Your HTC One.....	412
Getting Help with Your HTC One	412

Index **413**

Online Element: Use Your HTC One as a Remote Control

About the Authors

Craig James Johnston has been involved with technology since his high school days at Glenwood High in Durban, South Africa, when his school was given some Apple Europluses. From that moment, technology captivated him, and he has owned, supported, evangelized, and written about it.

Craig has been involved in designing and supporting large-scale enterprise networks with integrated email and directory services since 1989. He has held many IT-related positions in his career, ranging from sales support engineer to mobile architect for a 40,000-smartphone infrastructure at a large bank.

In addition to designing and supporting mobile computing environments, Craig co-hosts the CrackBerry.com podcast and guest hosts on other podcasts, including iPhone and iPad Live podcasts. You can see Craig's previously published work in his book *Professional BlackBerry*, and in many books in the *My* series, covering devices made by BlackBerry, Palm, Google, Samsung, HTC, and Motorola.

Craig also enjoys high-horsepower, high-speed vehicles and tries very hard to keep to the speed limit while driving them.

Originally from Durban, South Africa, Craig has lived in the United Kingdom, the San Francisco Bay Area, and New Jersey, where he now lives with his wife, Karen, and a couple of cats.

Craig would love to hear from you. Feel free to contact Craig about your experiences with *My HTC One* at <http://www.CraigsBooks.info>.

All comments, suggestions, and feedback are welcome, including positive and negative.

Guy Hart-Davis is the author of various computer books, including *My Samsung Galaxy Note II*, *Kindle Fire Geekery*, and *How to Do Everything: Samsung Galaxy Tab*.

Dedication

"Their eyes scaled with ignorance, bigotry and greed, the Spanish erased a previous heritage of mankind when they arrived in Mexico. In doing so they deprived the future of any detailed knowledge concerning the brilliant and remarkable civilizations which once flourished in Central America."

—Graham Hancock

Acknowledgments

We would like to express our deepest gratitude to the following people on the *My HTC One* team who all worked extremely hard on this book:

- Michelle Newcomb, acquisitions editor, who worked with us to give this project an edge
- Christian Kenyeres, our technical editor, who double-checked our writing to ensure the technical accuracy of this book
- Brandon Cackowski-Schnell, our developmental editor, who developed the manuscript skillfully
- Barbara Hacha, who copy edited the manuscript with a light touch
- Mandie Frank, who kept the project rolling and on schedule
- Mary Sudul, who laid out the book and made it look great

We Want to Hear from You!

As the reader of this book, *you* are our most important critic and commentator. We value your opinion and want to know what we're doing right, what we could do better, what areas you'd like to see us publish in, and any other words of wisdom you're willing to pass our way.

We welcome your comments. You can email or write to let us know what you did or didn't like about this book—as well as what we can do to make our books better.

Please note that we cannot help you with technical problems related to the topic of this book.

When you write, please be sure to include this book's title and author as well as your name and email address. We will carefully review your comments and share them with the author and editors who worked on the book.

Email: feedback@quepublishing.com

Mail: Que Publishing
 ATTN: Reader Feedback
 800 East 96th Street
 Indianapolis, IN 46240 USA

Reader Services

Visit our website and register this book at quepublishing.com/register for convenient access to any updates, downloads, or errata that might be available for this book.

This page intentionally left blank

In this chapter, you become familiar with the external features of the HTC One and the basics of getting started with the HTC version of the Android operating system. Topics include the following:

- Your HTC One's external features
- Fundamentals of Android 4.1.2 (Jelly Bean) and HTC Sense 5.0
- First-time setup
- Synchronization software

Getting to Know Your HTC One

Let's start by getting to know more about your HTC One by examining the external features, device features, and how Google's operating system, Android 4.1.2 (or Jelly Bean) and HTC Sense, works.

One important thing to remember about versions of the Google Android operating system is that Google releases a new version of Android and makes it available to its Nexus line of smartphones and tablets. That version of Android is then taken by different manufacturers and modified (sometimes quite extensively) to differentiate their model of Android smartphone or tablet. Your HTC One is running HTC's version of Android, which is Android 4.1.2 plus HTC Sense 5.0.

Your HTC One's External Features

Becoming familiar with the external features of your HTC One is a good place to start because you will be using them often. This chapter also covers some of the technical specifications of your HTC One, including the touchscreen and camera.

Front



Ambient Light sensor—Adjusts the brightness of the screen based on the brightness of the ambient light.

Proximity sensor—Detects when you lift your HTC One to your ear to talk on a call. When it detects this, it turns off the screen and disables touch to prevent accidental actions.

SIM card tray—The SIM card tray is located on the left side of your HTC One. Use the included SIM card tray ejection tool to eject the tray and insert or replace the Micro-SIM card.

Earpiece and left speaker—Hold to your ear when on a phone call. This area also houses the left speaker when playing audio or video.

Notification LED—Positioned on the bottom row of holes, the third hole in, the Notification LED indicates that you have a pending notification (like new SMS, new email, new Facebook update) by flashing green. It also indicates when your HTC One is connected to a power source (computer or power adapter) and the battery is fully charged by showing as solid green. It flashes orange when the battery is very low, and is solid orange when the battery is being charged.

Front camera—2.1 megapixel front-facing camera with a wide angle lens that you can use for video chat, taking self-portraits, and even unlocking your HTC One using your face.

Touchscreen—The HTC One has a 4.7-inch, 1080×1920 pixel Super Liquid Crystal Display (LCD) 3 screen that incorporates capacitive multitouch and is covered by Corning Gorilla Glass 2.

Back button—Touch to go back one screen when using an application or menu. This button is touch sensitive and does not require pressure.

Home button—Touch to go to the Home screen. The application that you are using continues to run in the background. This button is touch sensitive and does not require pressure.

Right speaker—This is the right speaker that is used when playing audio or video.

Volume up/down buttons—Located on the right side of your HTC One, these buttons control the audio volume on calls and while playing audio and video.

Back



LED camera flash—Illuminates the area when taking photos or recording video. It has five levels of brightness that are automatically selected based on distance to the people or objects in the frame.

Rear camera—4-megapixel rear-facing camera with a 28mm lens and an aperture of F2.0.

Rear microphone—This microphone works in conjunction with the microphone on the bottom of your HTC One while on phone calls to cancel out any background noise. This microphone is also used when recording videos.

Top



Headphone jack—This is a standard 3.5 mm headphone jack that can be used to plug in headphones and earbuds.

Power button/Infra Red Blaster—Press once to wake your HTC One. While it is still locked, press and hold for six seconds to restart your HTC One. When your HTC One is unlocked, pressing and holding the power button for two seconds reveals a menu of choices. The choices enable you to put your HTC One into airplane mode (all radios off), power off your HTC One, restart it, or enable Kid mode. When in Kid mode, your HTC One will allow access only to age-appropriate games and more. We cover setting up Kid Mode in Chapter 2, “Customizing Your HTC One.” The power button is also an Infrared Blaster, which means that your HTC One can be used as a TV remote control. We cover more on how that works in a later chapter.

Bottom



Micro-USB port—The micro-USB 2.0 Port with Mobile High Definition Video Link (MHL) allows you to charge your HTC One and synchronize media and other files to your computer. It also allows you to plug your HTC One directly into a High Definition Multimedia Interface (HDMI) port on your A/V Receiver or TV to watch movies or other content. This requires a special micro-USB to HDMI cable.

Microphone—This microphone is used when you are on the phone.

Other Sensors and Radios

Your HTC One includes a Wi-Fi (WLAN) radio that supports 802.11 a/ac/b/g/n for connecting to your home or office networks or to Wi-Fi hotspots in airports, coffee shops, and even on planes. In addition, it has a Bluetooth V4.0 radio with aptX enabled for connecting Bluetooth accessories, such as headsets. The aptX technology provides a superior audio quality when playing audio using Bluetooth. Your HTC One also includes a Near Field Communications (NFC) radio for mobile payments and swapping information between other Android devices, and a Global Positioning System (GPS) radio for detecting your exact location on planet earth. On the sensor front, it has an accelerometer for detecting movement and a gyroscope for assisting with movement detection and gaming.

First-Time Setup

Before setting up your new HTC One, it is advisable (but not required) that you have a Google account. This is because your HTC One running Android is tightly integrated into Google and enables you to store your content in the Google cloud, including any books and music you buy or movies you rent. If you do not already have a Google account, head to <https://accounts.google.com> on your desktop computer and sign up for one.

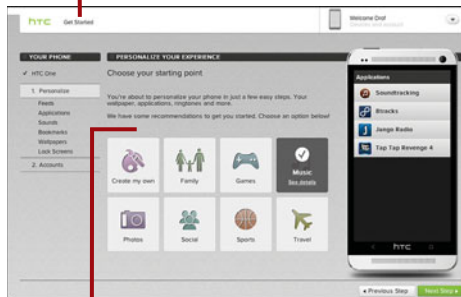
You Need Wi-Fi or Cellular Data to Set Up Your HTC One

You need to be able to connect to a Wi-Fi network or cellular data network when you set up your HTC One.

Set Up Your HTC One Before Taking It Out of the Box

HTC allows you to pre-setup your HTC One using its website (<http://start.htc-sense.com>). Visit the website, and either create a new HTC account for yourself or log in to an existing HTC account. When you are logged in, click Get Started, and you will be taken through a series of steps to choose your HTC phone model. Then you can use pre-setup for many settings and features, including news feeds you want to subscribe to, apps you want to preinstall, sounds and ringtones you want to include or upload, web browser bookmarks to prepopulate, wallpapers, and lock screen configurations. You will also be able to use pre-setup to specify accounts you want on your HTC One, such as Facebook, Twitter, email, and more. After this setup is complete, it will be available to use when you reach step 8 in the following steps, or if your HTC One is already set up, the new setup or changes to the setup will be automatically sent to your HTC One to be applied.

Click to get started

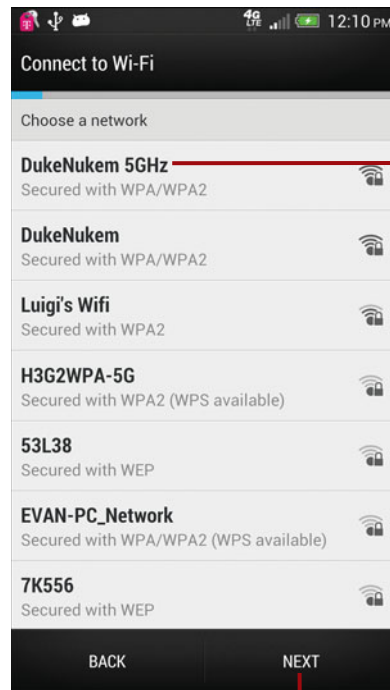


Pre-setup every aspect of your HTC One

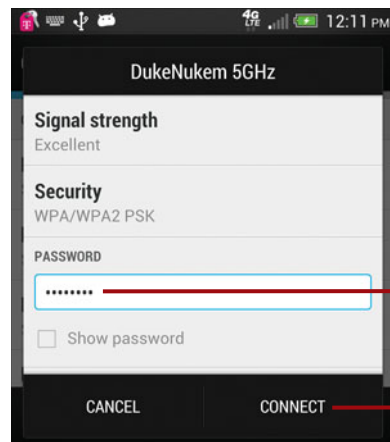
1. Touch and hold the Power button until you see the animation start playing.
2. Swipe the lock icon up to start the setup process.
3. Touch to change your region and language if needed.
4. Touch Start to continue with the setup.



5. Touch the Wi-Fi network you want to connect to; if you don't want to connect to a Wi-Fi network, touch Next and skip to step 8.
6. Type in the Wi-Fi network password.
7. Touch Connect.



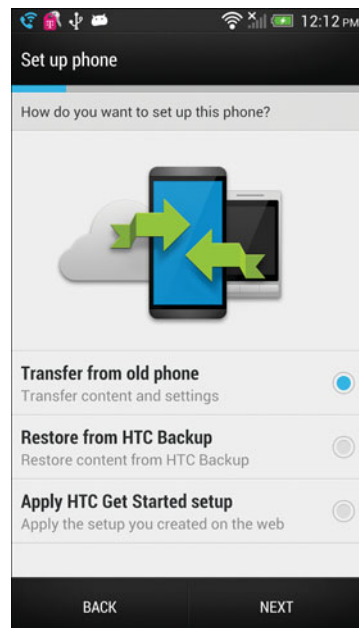
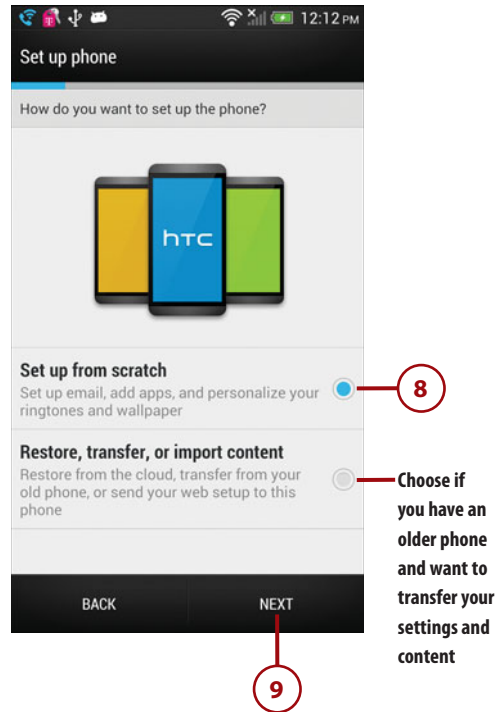
Touch to skip Wi-Fi setup and continue using cellular data



8. Touch to choose Set Up from Scratch.
9. Touch Next.

How Can I Transfer My Old Settings and Content?

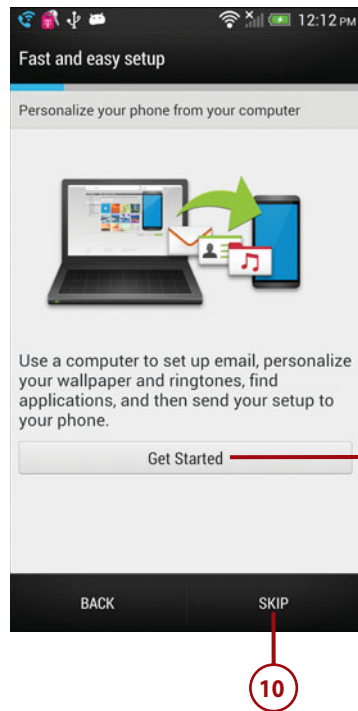
If you choose to restore, transfer, or import, you will be able to transfer content and settings from either an older HTC Android smartphone, another Android smartphone running Android version 2.3 (Gingerbread) or newer, an Apple iPhone 3G or newer, a BlackBerry smartphone, and other smartphones, feature phones, and "dumb" phones made by manufacturers such as LG, Motorola, Nokia, Samsung, and Sony Ericsson. If you previously set up your HTC One using the HTC Sense UI website (<http://start.htc-sense.com>), you will also be able to download that setup. Finally, you will be able to restore from an HTC backup that was previously made from your old HTC Android smartphone.



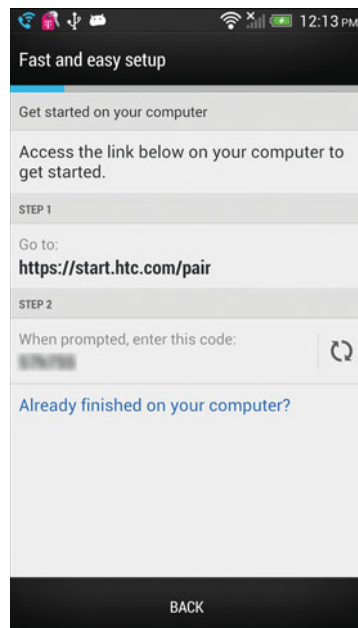
10. Touch Skip to continue.

Set Up Using Your Computer

If you choose to set up your HTC One using your computer, the process will be very similar to the one described in the earlier margin note titled “Set Up Your HTC One Before Taking It Out of the Box,” but a code will be provided that pairs your HTC One to your HTC account.



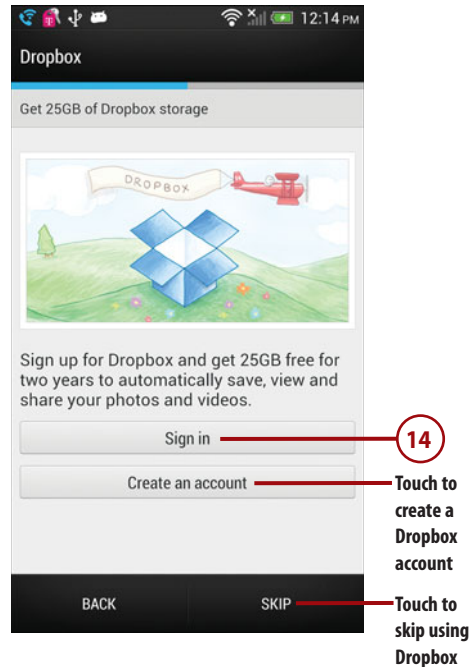
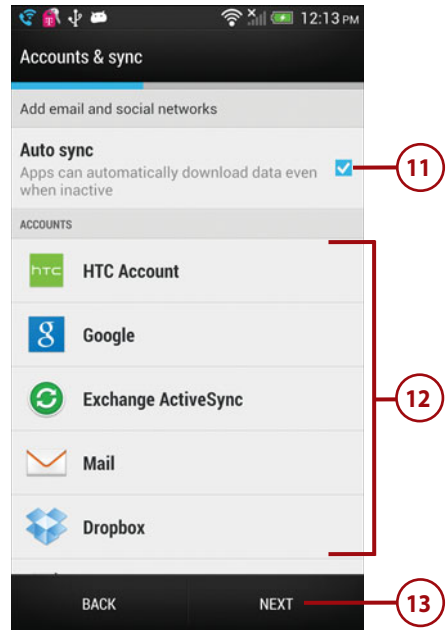
Touch to set up your HTC One using your desktop computer



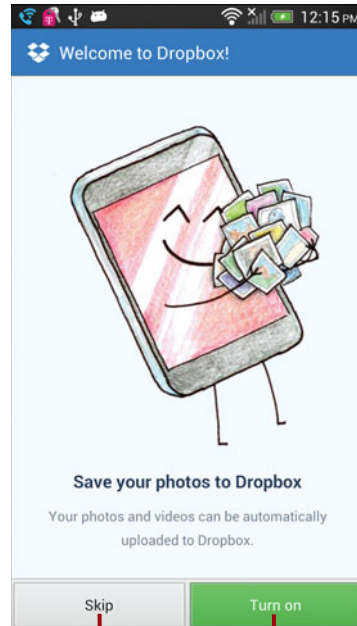
11. Check the box if you want apps to be able to download data even when they are inactive.
12. Choose one or more accounts to set up on your HTC One. You can set up these accounts later if you like.
13. Touch Next.
14. Touch Sign in.

What Is Dropbox?

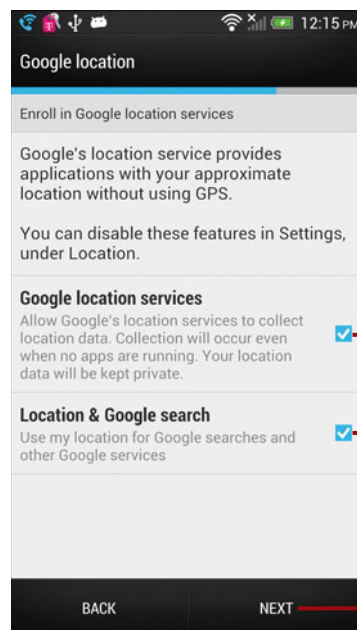
Dropbox is an online service that provides 2 gigabytes of free storage (this is enough to store about 600 pictures or about 500 songs) that you can use to store anything you like. If you invite a friend to Dropbox and the friend signs up, you are given an extra free 500 megabytes. Just for being an HTC customer and buying your HTC One, Dropbox gives you 25 gigabytes free for two years, which is a great deal and provides a huge online, free repository for all your pictures, music, video, HTC back-ups, and much more.



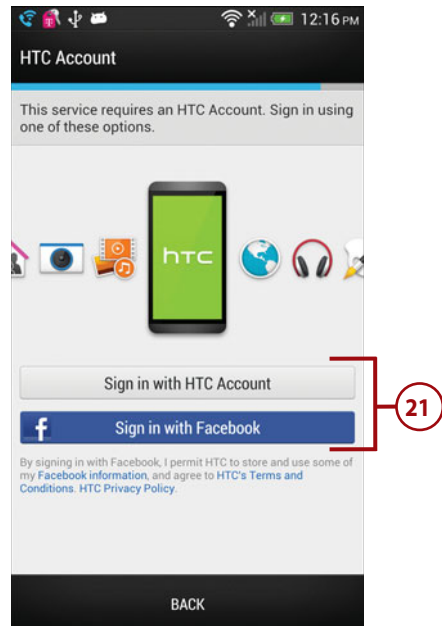
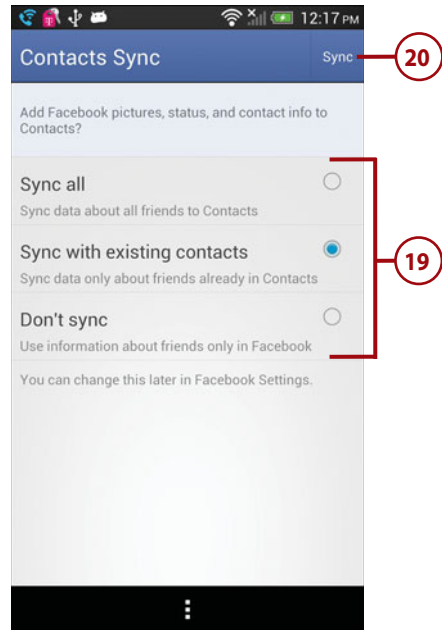
15. Touch to enable a feature that automatically saves your pictures and videos to your Dropbox account.
16. Check this box if you are okay with Google collecting information about your geographic location at any time. Although Google keeps this information safe, if you are concerned about privacy rights, you should uncheck this box.
17. Check this box if you are okay with Google using your geographic location for Google searches and other Google services such as navigation.
18. Touch to go to the next screen.



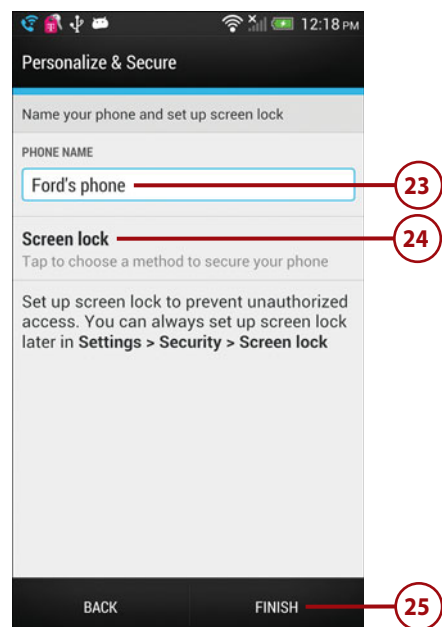
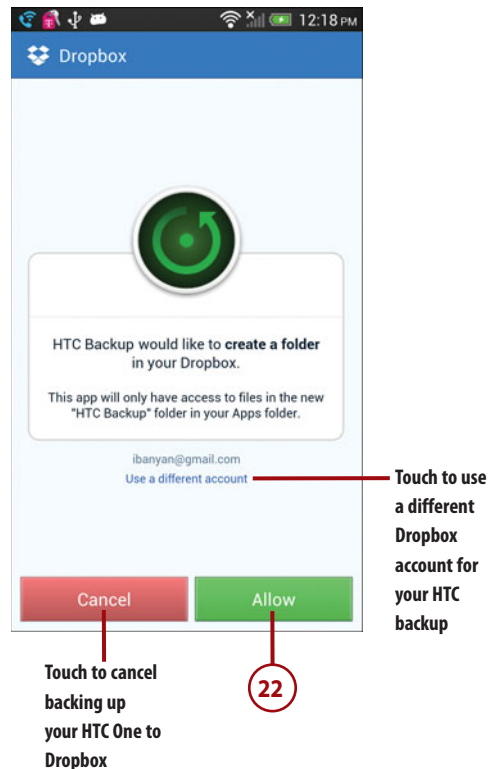
Touch to skip saving your photos and videos in Dropbox



19. Choose how you want to synchronize your Facebook friends' contact pictures, their status, and contact info from Facebook to the Contacts app on your HTC One. You can also choose not to synchronize this info.
20. Touch to go to the next screen.
21. Choose how you want to log in to your HTC account if you chose to synchronize Facebook content in the previous step. You can log in using your HTC Account or your Facebook account.



22. Touch to allow a backup of your HTC One to be saved in your Dropbox account.
23. Enter a name for your HTC One.
24. Touch to choose a method for locking your HTC One, if you want to use a locking method. You can choose from a numeric PIN, an onscreen pattern, a password, or you can use your face to unlock your phone. You can also choose to use no lock method.
25. Touch to start using your HTC One.



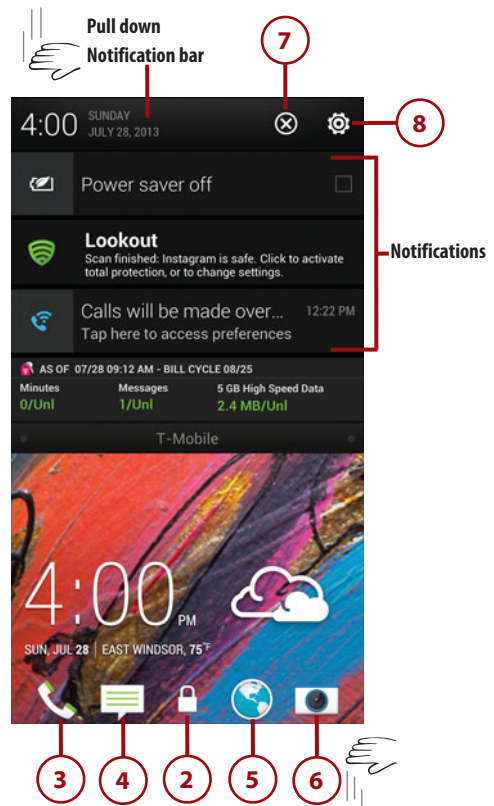
Fundamentals of Android 4.1.2 and HTC Sense UI

Your HTC One is run by an operating system called Android. Android was created by Google to run on any tablet or smartphone, and quite a few tablets and smartphones run on Android today. Your HTC One uses a recent version of Android, called Android 4.1.2 (or Jelly Bean), in conjunction with modifications that HTC has made to Android, which it calls HTC Sense UI. Let's go over how to use Android 4.1.2 and HTC Sense UI.

The Lock Screen

If you haven't used your HTC One for a while, the screen goes blank to conserve battery power. Here is how to interact with the Lock screen.

1. Press the Power button to wake up your HTC One.
2. Slide the padlock icon up to unlock your HTC One.
3. Slide the Phone icon up to unlock your HTC One and launch the Phone app.
4. Slide the Messages icon up to unlock your HTC One and launch the Text Messages app.
5. Slide the Globe icon up to unlock your HTC One and launch the web browser app.
6. Slide the Camera icon up to unlock your HTC One and launch the Camera app.
7. Touch to clear all notifications.
8. Touch to go to Settings on your HTC One.



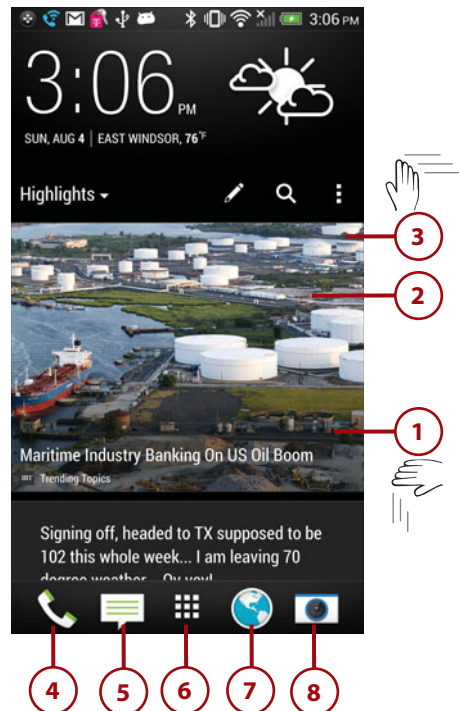
Work with Notifications on the Lock Screen

With Android 4.1, you can work with notifications right on the lock screen. If you see notifications in the Notification bar, pull down the Notification bar to view and clear them. Touching a notification takes you straight to the app that created it. Read more about the Notification bar later in this chapter.

BlinkFeed

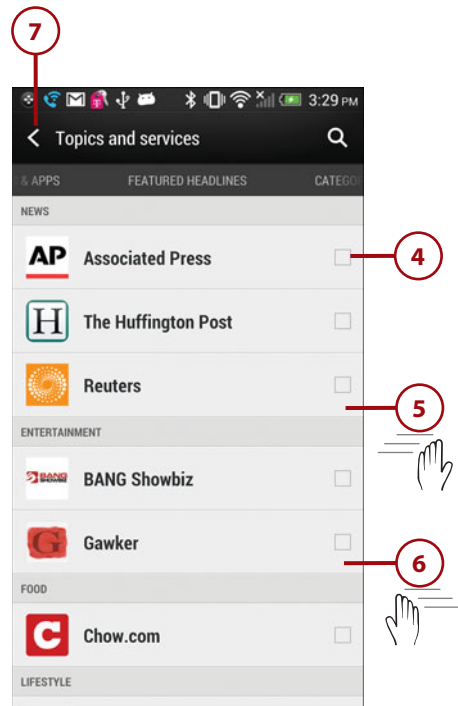
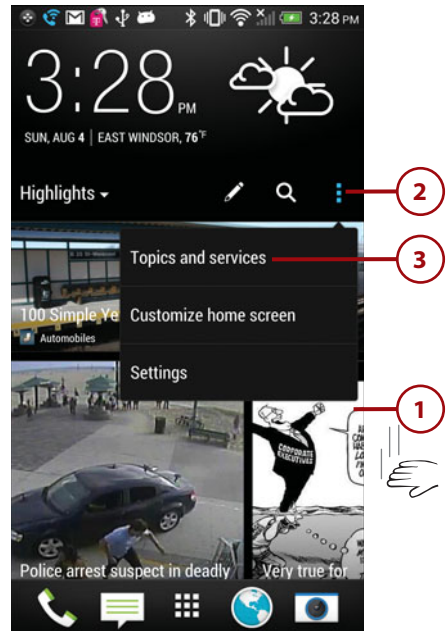
BlinkFeed is a feature of your HTC One and provides quick access to the information you are interested in. When you unlock your HTC One, you are taken directly to the BlinkFeed screen.

1. Scroll up to see all feeds in your BlinkFeed.
2. Touch a story to read more about it.
3. Swipe to the right to go to your HTC One's Home screen.
4. Touch the Phone icon to launch the Phone app.
5. Touch the Messages icon to launch the Text Messaging app.
6. Touch the Launcher icon to go to a list of all apps installed on your HTC One.
7. Touch the Web Browser icon to launch the Web browser.
8. Touch the Camera icon to launch the Camera app.



Configuring BlinkFeed

1. Pull down the feed slightly until you see the menu appear.
2. Touch the Menu button to reveal the menu choices.
3. Touch Topics and Services.
4. Check the box next to all services you want to see featured headlines from.
5. Swipe left to choose which services and apps to add to your BlinkFeed.
6. Swipe right to choose the categories you are interested in for your feeds.
7. Touch to return to BlinkFeed.



It's Not All Good

CANNOT ADD TO BLINKFEED

As of the writing of this book, it is not possible to add new content to BlinkFeed. Although you can select and unselect the existing news services and feeds, you cannot add new ones. You are also not able to add apps like Instagram or Vine to BlinkFeed. You can use only Facebook, Twitter, Flickr, and LinkedIn.

The Home Screen(s)

After you unlock your HTC One and swipe to the right on the BlinkFeed, you are presented with the main Home screen. Your HTC One has two Home screens (you can add more). The Home screens contain application shortcuts, a Launcher icon, Notification bar, Shortcuts, Favorites tray, and widgets.

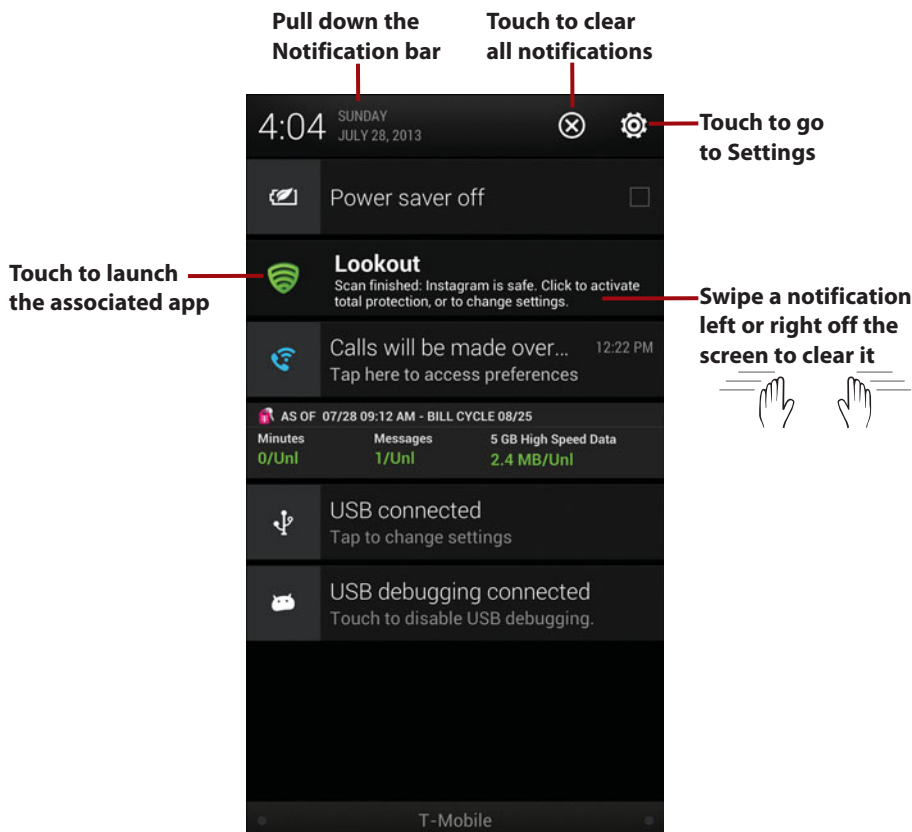


Notification bar—The Notification bar shows information about Bluetooth, Near Field Communications (NFC), Wi-Fi, and cellular coverage, as well as your Sound Profile, the battery level, and time. The Notification bar also serves as a place where apps can alert or notify you using notification icons.

Notification icons—Notification icons appear in the Notification bar when an app needs to alert or notify you of something. For example, the Phone app can show the missed call icon, indicating that you missed a call.

Working with Notifications

To interact with notifications that appear in the Notification bar, place your finger above the top of the screen and drag it down to reveal the notifications. Swipe each individual notification off the screen to the left or right to clear them one by one. Using two fingers, drag down on a notification to expand it.



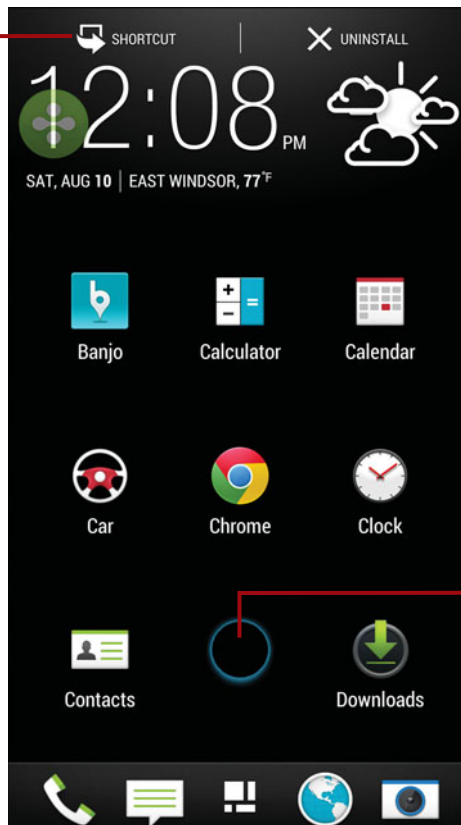
Widgets—Widgets are applications that run right on the Home screens. They are specially designed to provide functionality and real-time information. An example of a widget is one that shows the current weather or provides search capabilities. You can move and resize widgets.

App shortcut—Touching an app shortcut launches the associated app.

Creating App Shortcuts

Touch the Launcher icon to see all your apps. Touch and hold on the app you want to make a shortcut for. Drag it up to the word **Shortcut** on the top left of the screen. Keep holding the icon when the Home screen appears. Drag the app shortcut to where you want it on the Home screen, drag it to an App folder to add it to the folder, or drag it left or right off the screen to move it between Home screens. If you change your mind, just drag the icon to the word **Cancel** and release it. After you have found a home for your App Shortcut, release the icon.

Drag the icon
up to Shortcut



Touch and hold
an app icon

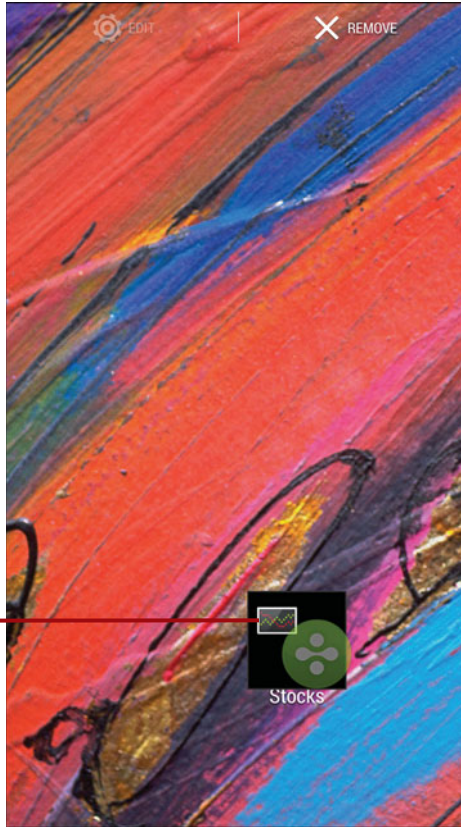


App Folders—App Folders are groups of apps that you can use to organize apps and declutter your screen.

Creating App Folders

To create a new App Folder, drag one app shortcut onto another one. An App Folder is created automatically. To name your new App Folder, touch the folder to open it and touch the word Folder to enter your own name.

**Drag one icon
onto another to
make a folder**



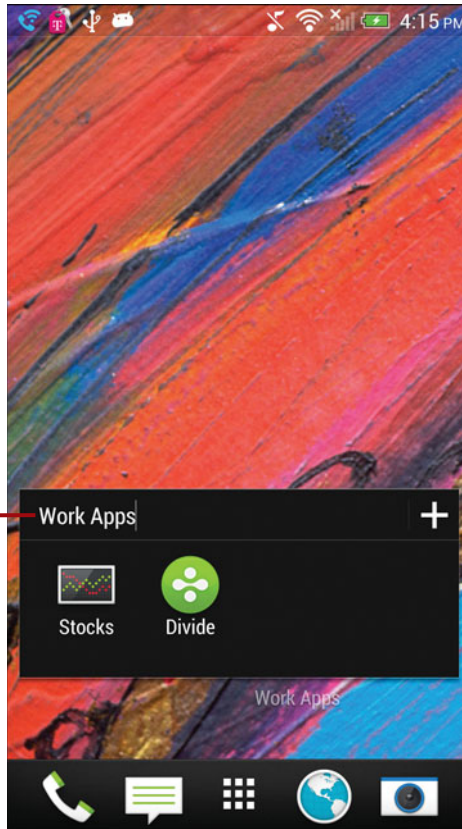
Launcher bar—The Launcher bar is visible on all Home screens and when you touch the Launcher icon. You can drag apps to the Launcher bar so that they are available no matter which Home screen you are looking at. You can rearrange and move apps in the Launcher bar.

Managing the Launcher Bar

The Launcher bar is one of those things that is different from the regular version of Android. The regular version of Android calls this area the Favorites tray, and you can drag apps to it and off it while on the Home screen. However, on your HTC One, you can only drag apps to the Launcher bar and drag apps off it after you first touch the Launcher icon to see all apps.

Launcher icon—Touch to show application icons for all applications that you have installed on your HTC One.

Touch to name
your App Folder



Using Your Touchscreen

Interacting with your HTC One is done mostly by touching the screen—what's known as making gestures on the screen. You can touch, swipe, pinch, double-tap, and type.

Touch—To start an application, touch its icon. Touch a menu item to select it. Touch the letters of the onscreen keyboard to type.



Touch and hold—Touch and hold to interact with an object. For example, if you touch and hold a blank area of the Home screen, a menu pops up. If you touch and hold an icon, you can reposition it with your finger.



Drag—Dragging always starts with a touch and hold. For example, if you touch the Notification bar, you can drag it down to read all the notification messages.



Swipe or slide—Swipe or slide the screen to scroll quickly. To swipe or slide, move your finger across the screen quickly. Be careful not to touch and hold before you swipe, or you will reposition something. You can also swipe to clear notifications or close apps when viewing the recent apps.



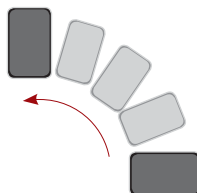
Double-tap—Double-tapping is like double-clicking a mouse on a desktop computer. Tap the screen twice in quick succession. For example, you can double-tap a web page to zoom in to part of that page.



Pinch—To zoom in and out of images and pages, place your thumb and forefinger on the screen. Pinch them together to zoom out or spread them apart (unpinch) to zoom in. Applications such as Browser, Gallery, and Maps support pinching.

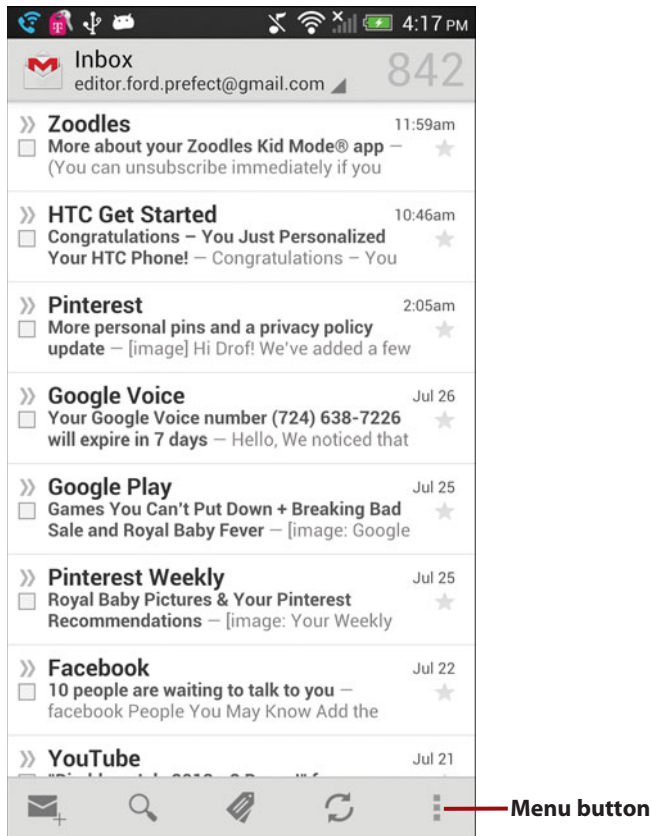


Rotate the screen—If you rotate your HTC One from an upright position to being on its left or right side, the screen switches from portrait view to landscape view. Most applications honor the screen orientation. The Home screens and Launcher do not.



Where Is the Menu Button?

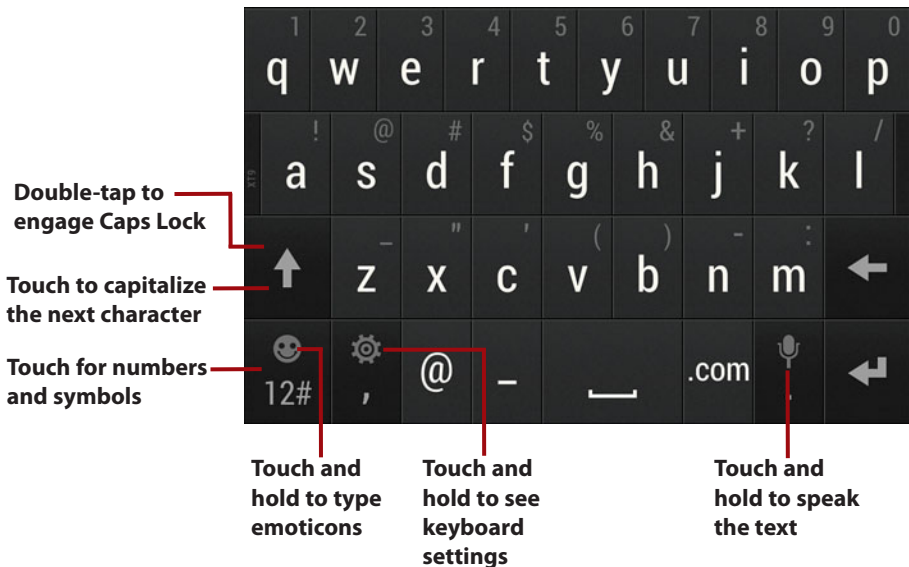
If you are familiar with previous versions of Android, you know there used to be a Menu button. This Menu button provided contextual actions for the app you were using. In Android 4.0 (Ice Cream Sandwich) and Android 4.1 (Jelly Bean), the Menu button has been moved and is mostly found in the upper right of the screen when it is needed within an app. It can also sometimes be found in the bottom right or elsewhere on the screen as is needed by the app. The Menu button is now three vertical dots.



Using Your Keyboard

Your HTC One has a virtual (onscreen) keyboard for those times when you need to enter text. You might be a little wary of a keyboard that has no physical keys, but you will be pleasantly surprised at how well it works.

Some applications automatically show the keyboard when you need to enter text. If the keyboard does not appear, touch the area where you want to type and the keyboard slides up ready for use.

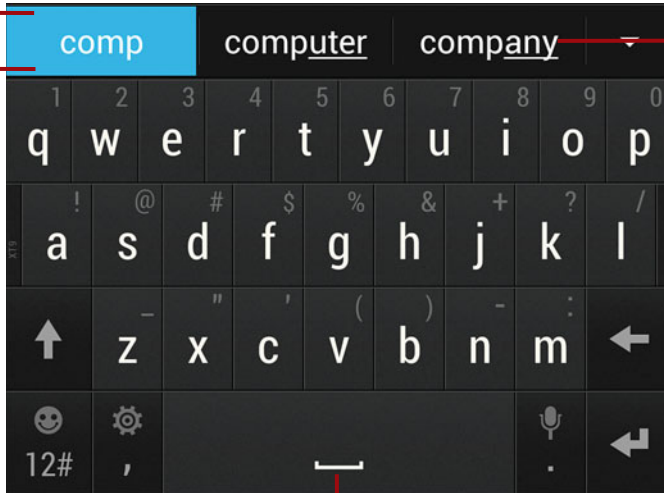


Keyboard Quick Tips

If you are typing an email address or a website address, the keyboard shows a button labeled .COM. If you touch it, you type .COM, but if you touch and hold it, you can choose between .EDU, .GOV, .ORG, and .NET. If you touch and hold the Return key, the cursor jumps to the next field. This is useful if you are filling out forms on a website or moving between fields in an app. If you touch and hold the microphone key, you can use dictation instead of typing.

Using the virtual keyboard as you type, your HTC One makes word suggestions. Think of this as similar to the spell checker you would see in a word processor. Your HTC One uses a dictionary of words to guess what you are typing. If the word you were going to type is highlighted, touch space or period to select it. If you can see the word in the list but it is not highlighted, touch the word to select it.

List of
suggested
words



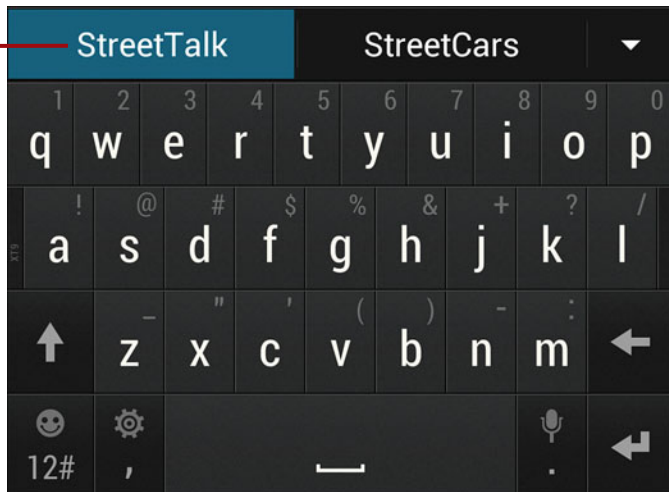
Touch to
select an
alternative
suggested
word

Touch space to accept
the highlighted word

Add Your Word

If you type a word that you know is correct, you can add it to your personal dictionary so that next time you type it, your HTC One won't try to correct it. To do this, after you have typed the word (in this case, we typed "StreetTalk"), you see it as the highlighted word. Touch the word once. Your word is now added to your Personal Dictionary and will be used in the future as you type.

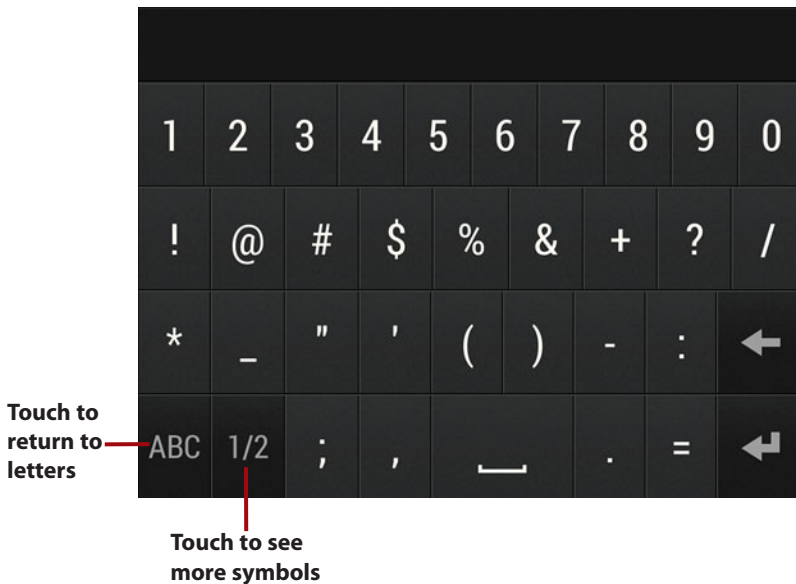
Touch to
add your
word to the
dictionary



To make the next letter you type a capital letter, touch the Shift key. To make all letters capitals (or Caps), double-tap the Shift key to engage Caps Lock. Touch Shift again to disengage Caps Lock.

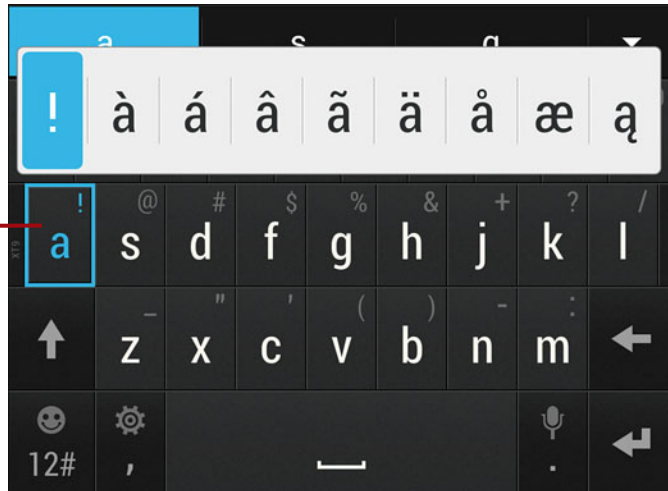
To type numbers or symbols, touch the Symbols key.

When on the Numbers and Symbols screen, touch the Symbols key to see extra symbols. Touch the ABC key to return to the regular keyboard.



To enter an accented character, touch and hold any vowel or the C, N, or S keys. A small window opens, enabling you to select an accented or alternative character. Slide your finger over the accented character and lift your finger to type it.

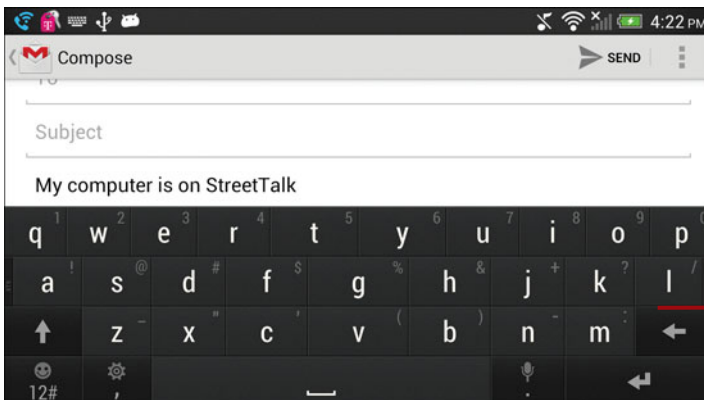
Touch and hold for accented characters



To reveal other alternative characters, touch and hold any other letter, number, or symbol.

Want a Larger Keyboard?

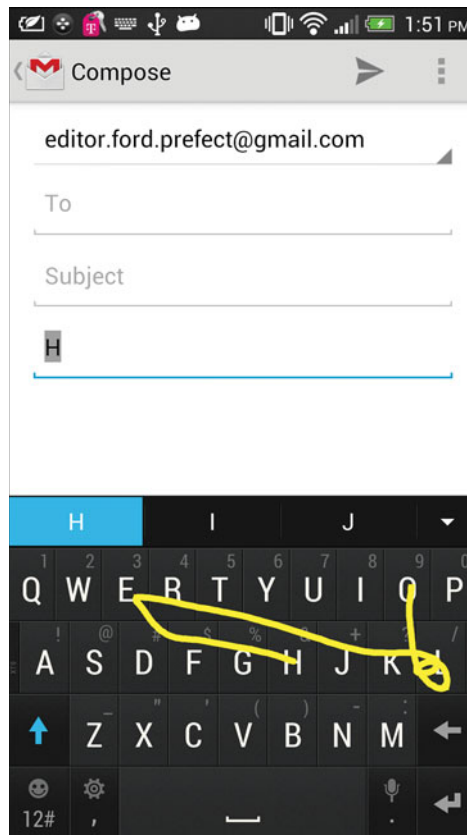
Turn your HTC One sideways to switch to a landscape keyboard. The landscape keyboard has larger keys and is easier to type on.



Landscape keyboard

Swipe to Type

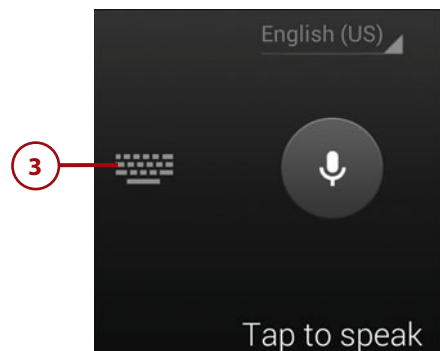
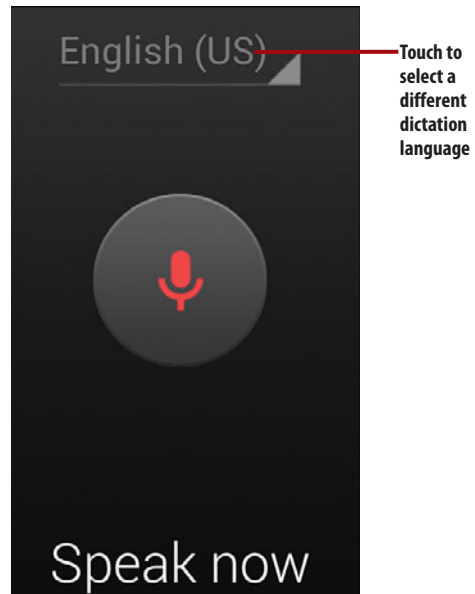
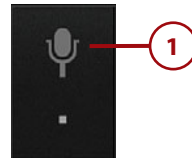
Instead of typing on the keyboard in the traditional way by touching each letter individually, you can swipe over the letters in one continuous movement. This is called Continuous Input. It is enabled by default so to use it just start swiping your finger over the letters of the word you want to type. Lift your finger after each word. No need to worry about spaces because your HTC One will add them for you. To type a double letter (like in the word hello), loop around that letter on the keyboard. As you swipe over the letters, a yellow trail will follow.



Dictation: Speak Instead of Typing

Your HTC One can turn your voice into text. It uses Google's speech recognition service, which means that you must have a connection to the cellular network or a Wi-Fi network to use it.

1. Touch and hold the microphone key, releasing it when you see the microphone icon appear.
2. Wait until you see Speak Now and then start saying what you want to be typed. You can speak the punctuation by saying "comma," "question mark," "exclamation mark," or "exclamation point."
3. Touch to return to the regular keyboard after you have stopped speaking for a few seconds.



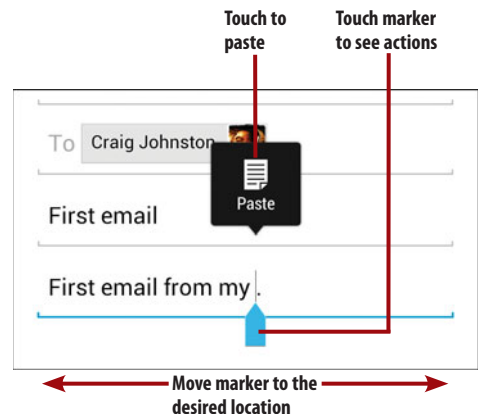
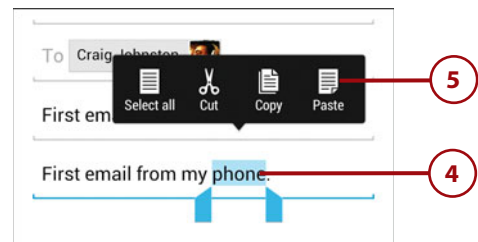
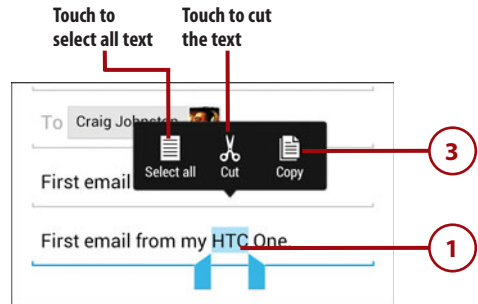
Editing Text

After you enter text, you can edit it by cutting, copying, or pasting the text. Here is how to select and copy text and then paste over a word with the copied text.

1. While you are typing, touch and hold a word you want to copy.
2. If you want to select more text, slide the blue end markers until you have selected all of the text you want to copy.
3. Touch to copy the text.
4. Touch and hold the word you want to paste over.
5. Touch Paste.

Simpler Copy/Paste

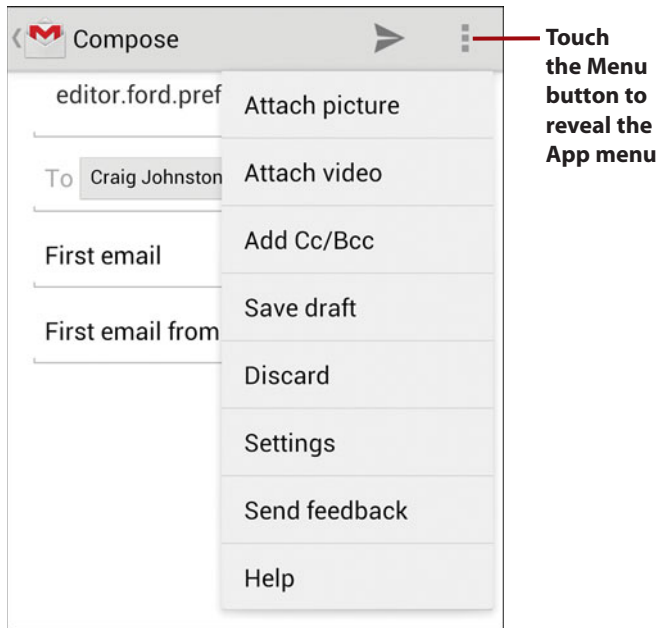
You might want to copy some text and paste it somewhere else, instead of pasting it over a word. To do this, after you have copied the text, touch once in the text area, and then move the single blue marker to where you want to paste the text. Touch the blue marker again and touch Paste.



Menus

Your HTC One has two types of menus: Regular menus and Context menus. Let's go over what each one does.

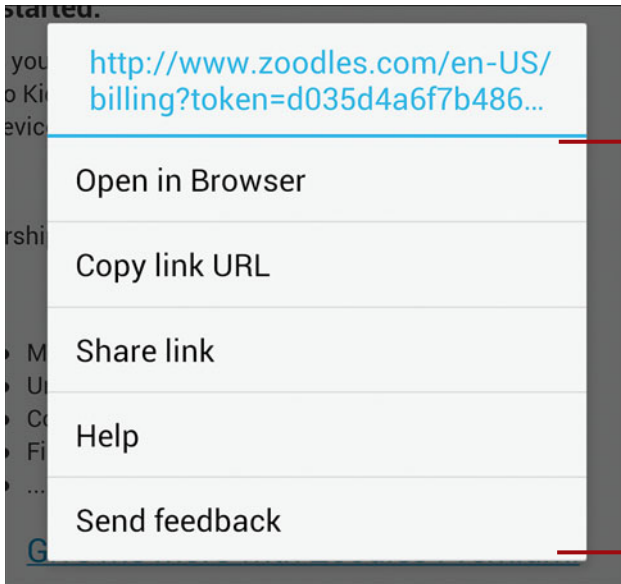
Most applications have a Menu button (menu). This enables you to make changes or take actions within that application. The Menu button should always appear in the top right of an app; however, it can sometimes appear in the bottom right, or elsewhere in the app.



A Context menu applies to an item on the screen. If you touch and hold something on the screen (in this example, a web link in an email), a Context menu appears. The items on the Context menu differ based on the type of object you touched.

[Give me more with Zoodles Premium!](http://www.zoodles.com/en-US/billing?token=d035d4a6f7b486...)

Touch and hold a link to reveal the link context menu

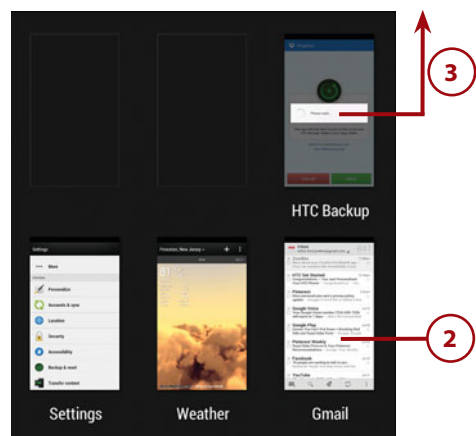


Touch an item in the menu

Switching Between Apps

Unlike other Android devices, your HTC One does not have a Recent Apps button; however, you can still access the Recent Apps list where you can switch between apps, close apps, and force them to quit if they have stopped responding. Here is how:

1. Double-tap the Home button.
2. Touch an app to switch to it.
3. Swipe an app up off the screen to close it.



Installing Synchronization Software

Because your HTC One is tightly integrated with Google and its services, all media that you purchase on your tablet is stored in the Google cloud and accessible anywhere and anytime. However, you might have a lot of music on your computer already that you need to copy to your Google cloud. If so, you need to install the Google Music Manager software.

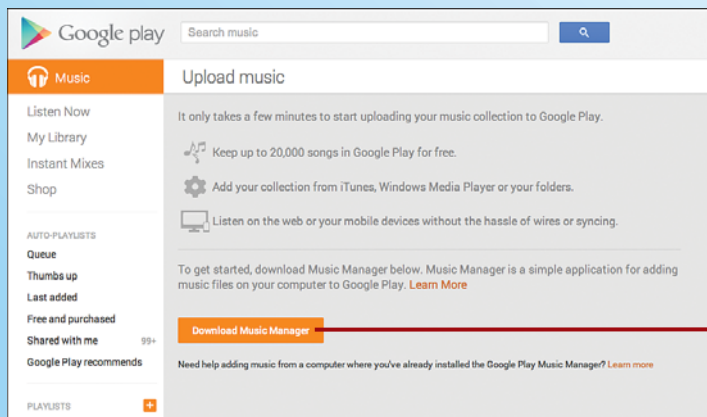
HTC Sync Manager

Although Google does provide its free cloud service so you can keep all of your music, music, and pictures in Google's cloud, you may not want to use it, or it may not be available in your country. As an alternative, you can install HTC Sync Manager on your computer, which will allow you to synchronize content between your computer and your HTC One without needing to use the Google cloud. HTC Sync Manager also allows you to move information from your old phone to your HTC One. To download and install HTC Sync Manager, visit www.htc.com/www/software/htc-sync-manager/ on your computer.

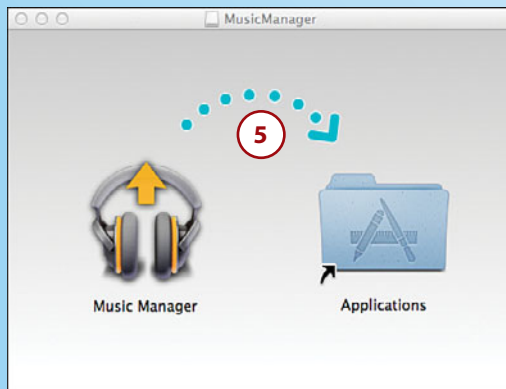
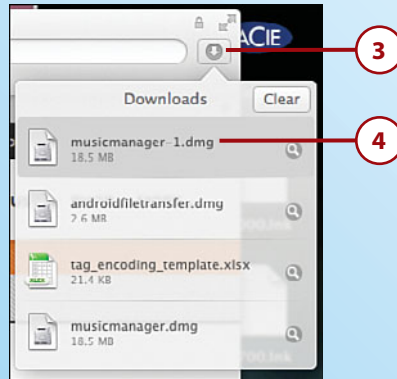
Installing Google Music Manager (Apple Mac)

Don't install Google Music Manager unless you plan to upload files from your computer to the Google Music cloud.

1. Visit https://play.google.com/music/listen#manager_pl from your desktop web browser and log in to your Google account if prompted.
2. Click to download Music Manager.



3. Click the downloads icon to reveal your downloaded files.
4. Double-click the musicmanager.dmg in your Safari Downloads.
5. Drag the Music Manager icon to the Applications shortcut to install the app.



6. Double-click the Music Manager icon in the Applications folder.

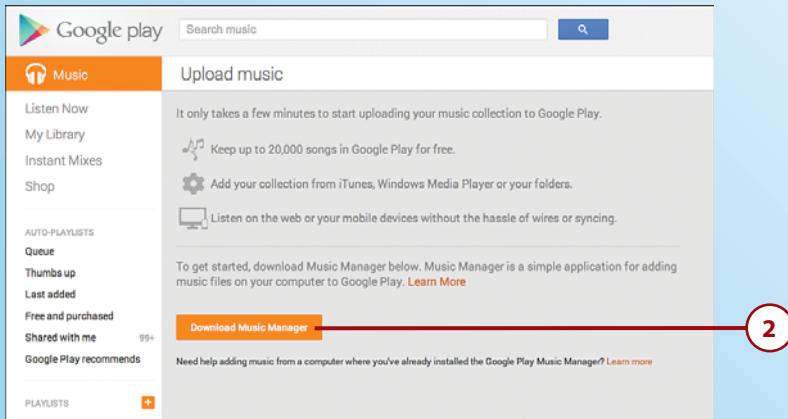


7. Skip to the "Configuring Music Manager" section later in the chapter to complete the installation.

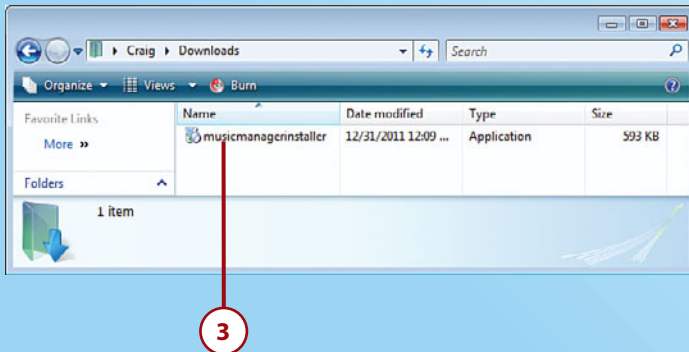
Installing Google Music Manager (Windows)

Don't install Google Music Manager unless you plan to upload files from your computer to the Google Music cloud.

1. Visit https://music.google.com/music/listen#manager_pl from your desktop web browser and log in to your Google account if prompted.
2. Click to download Music Manager.



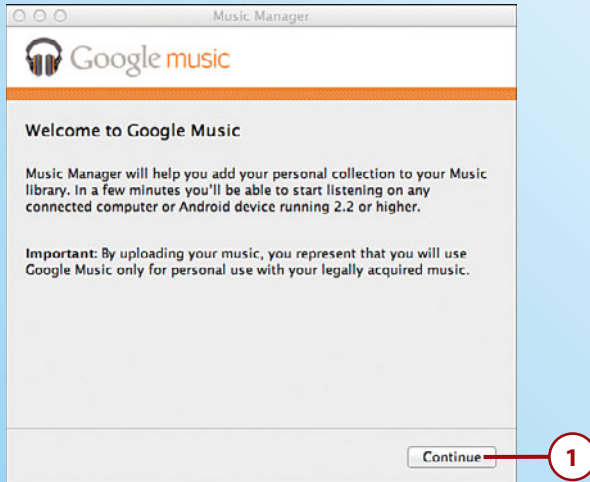
3. Double-click the musicmanagerinstaller app in your Downloads folder.



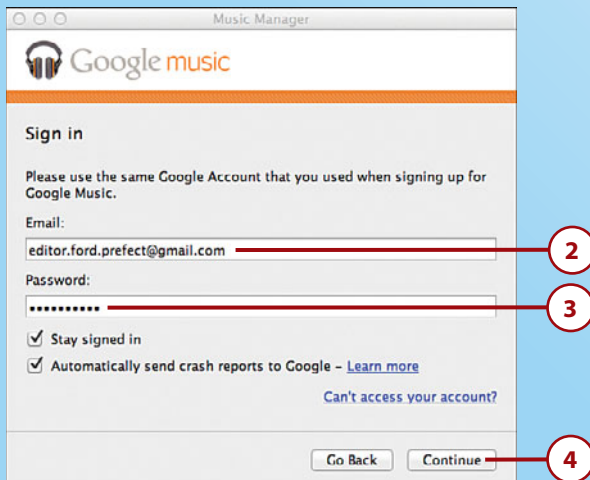
4. See the "Configuring Music Manager" section later in the chapter to complete the installation.

Configuring Music Manager (Windows and Apple Mac)

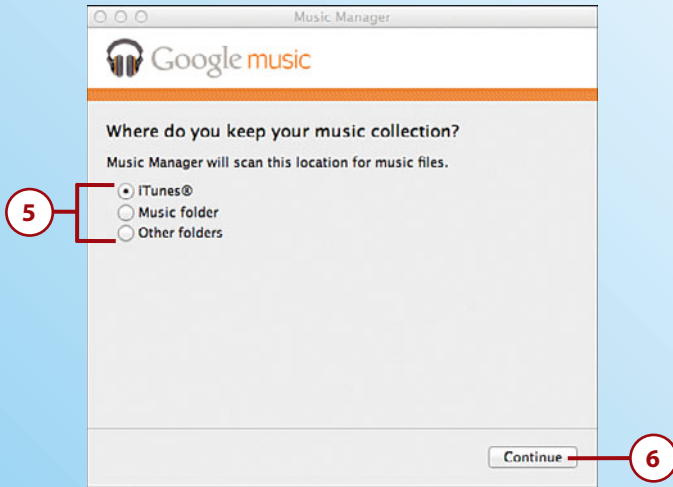
1. Click Continue.



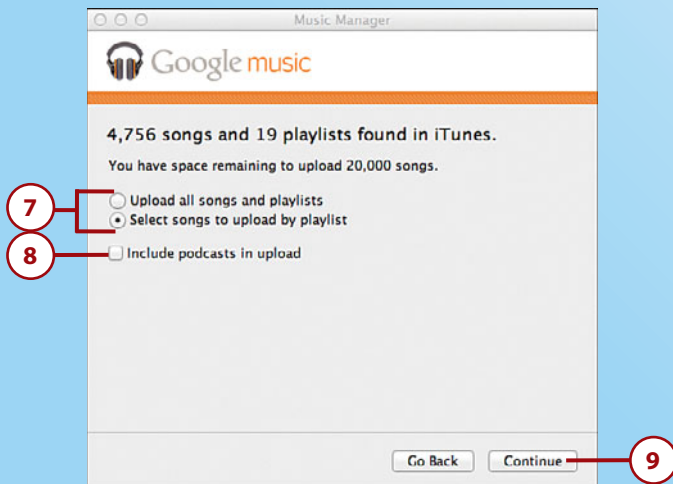
2. Enter your Google (Gmail) email address.
3. Enter your Google (Gmail) password.
4. Click Continue.



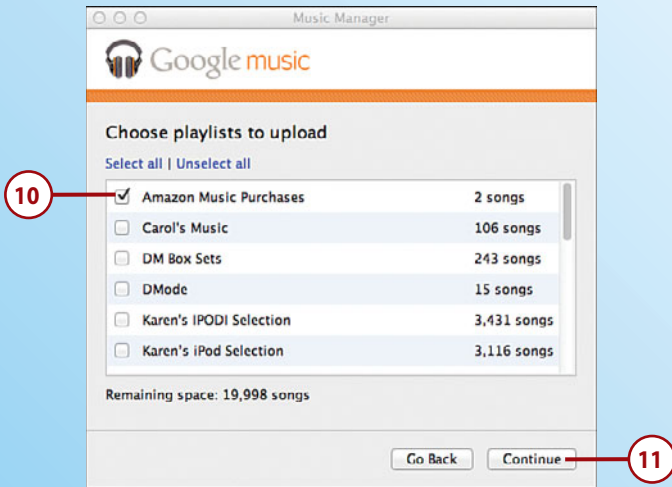
5. Choose where you keep your music.
6. Click Continue.



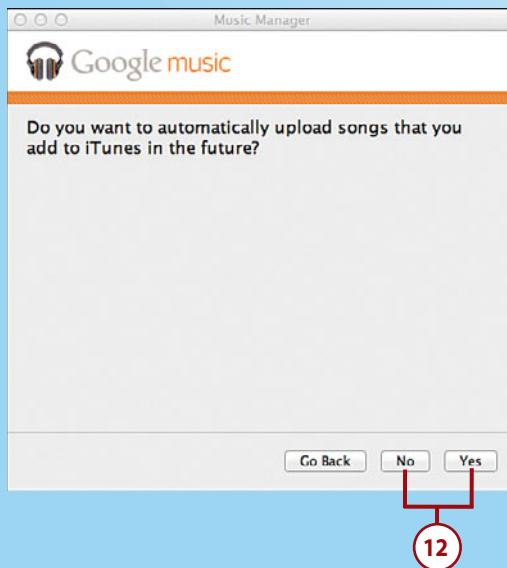
7. Choose whether to upload all your music or just some of your playlists. Remember that you can upload only 20,000 songs for free. Skip to step 12 if you choose to upload all music.
8. Check if you want to also upload podcasts.
9. Click Continue.

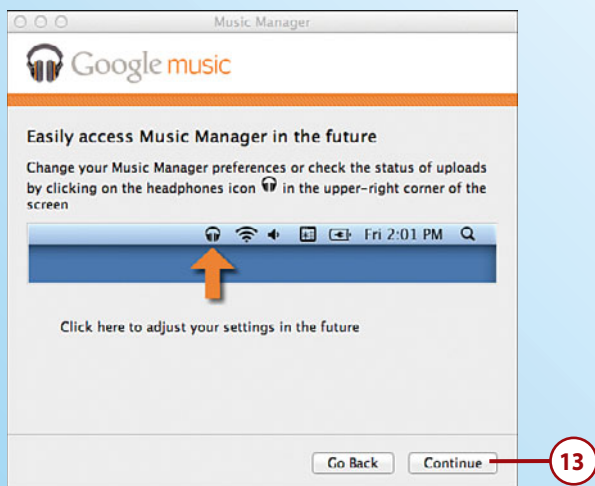
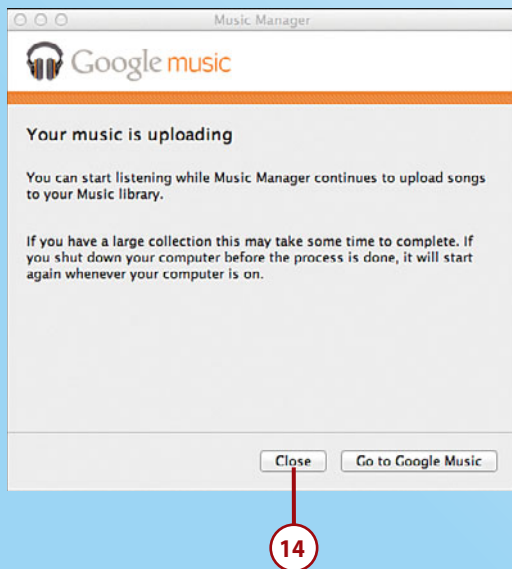


10. Select one or more playlists of music.
11. Click Continue.



12. Choose whether you want to automatically upload any new music that is added to your computer.



13. Click Continue.**14.** Click Close.

This page intentionally left blank



Choose a widget

In this chapter, you learn how to customize your HTC One to suit your needs and lifestyle. Topics include the following:

- Wallpapers and live wallpapers
- Replacing the keyboard
- Sound and display settings
- Setting region and language
- Kid Mode

2

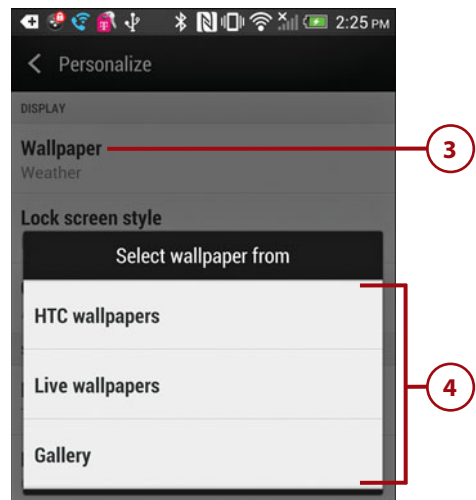
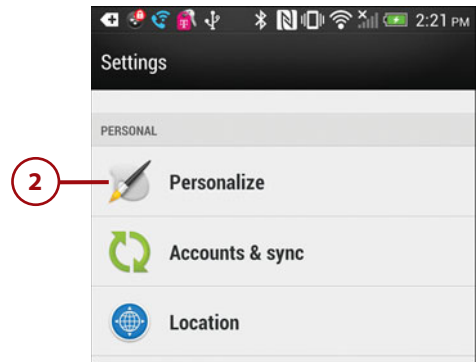
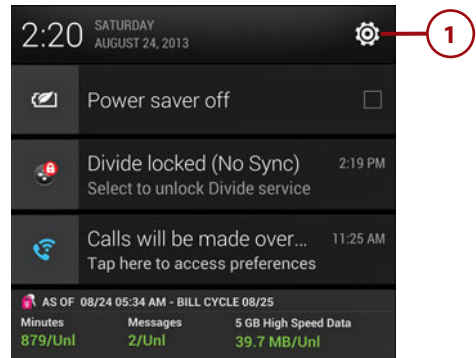
Customizing Your HTC One

Your HTC One arrives preconfigured to appeal to most buyers; however, you might want to change the way some of the features work, or even personalize it to fit your mood or lifestyle. Luckily, your HTC One is customizable.

Change Your Wallpaper

Your HTC One comes preloaded with a cool wallpaper. You can install other wallpapers, use live wallpapers that animate, and even use pictures in the Gallery application as your wallpaper.

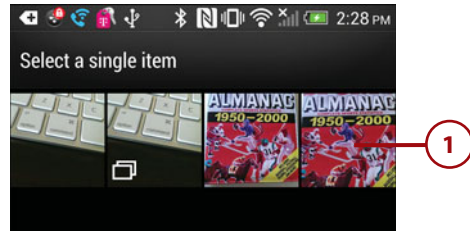
1. Pull down the Notification bar and touch the Settings icon.
2. Touch Personalize.
3. Touch Wallpaper.
4. Touch the type of wallpaper you want to use. Use the steps in one of the following three sections to select your wallpaper.



Wallpaper from Gallery Pictures

You can use any picture in your Gallery as a wallpaper.

1. Select the photo you want to use as your wallpaper.
2. Move the crop box to the part of the photo you want to use.
3. Adjust the size of the crop box to include the part of the photo you want.
4. Touch Done to use the cropped portion of the photo as your wallpaper.



Live Wallpaper

Live wallpaper is wallpaper with some intelligence behind it. It can be a cool animation, an animation that keys off things such as the music you are playing on your HTC One, or it can be something simple, such as the time. There are some very cool live wallpapers in Google Play that you can install and use.

1. Touch the live wallpaper you want to use. In this example, we will use the ST: Red Alert Live Wallpaper.
2. Touch to see and change the live wallpaper settings, if it has settings to change.
3. Touch Set Wallpaper to use the live wallpaper.

Find More Wallpaper

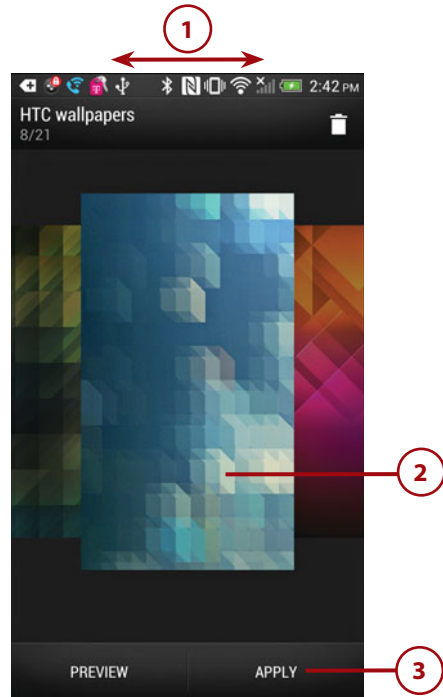
You can find wallpaper or live wallpaper in Google Play. Open Google Play and search for “wallpaper” or “live wallpaper.” Read more on how to use Google Play in Chapter 11, “Working with Android Applications.”



HTC Wallpaper

Choose a static wallpaper.

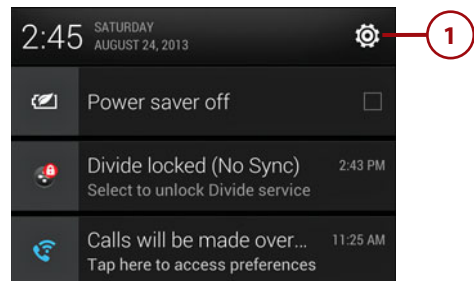
1. Swipe left and right to see all the wallpapers.
2. Touch a wallpaper to preview it.
3. Touch Apply to use the wallpaper.



Changing Your Keyboard

If you find it hard to type on the standard HTC One keyboard, or you just want to make it look better, you can install replacement keyboards. You can download free keyboards or purchase replacement ones from Google Play. Make sure you install a keyboard before following these steps.

1. Touch Settings.

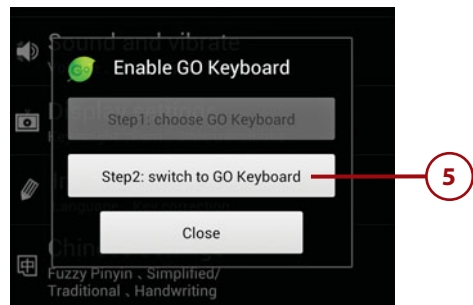
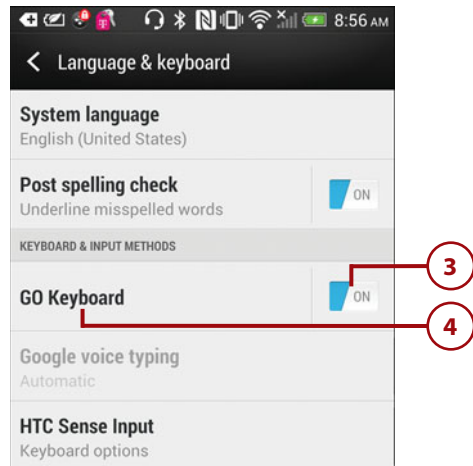
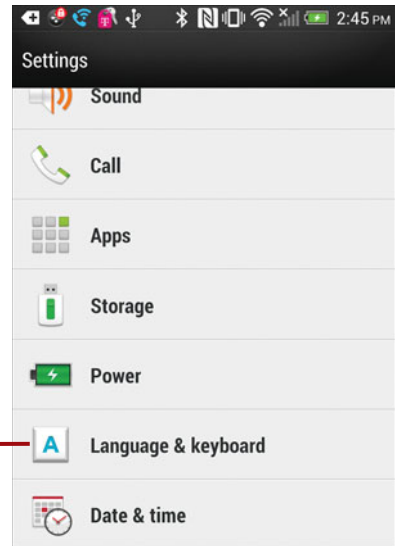


2. Touch Language & Keyboard.
3. Touch to flip the switch to On next to the keyboard you have previously installed from the Google Play store (in this example, we used GO Keyboard) to make that keyboard available for use.
4. Touch the name of the keyboard to start the keyboard's custom installation process.

Do Your Research

When you choose a different keyboard in step 3, the HTC One does not warn you that nonstandard keyboards have the potential for capturing everything you type, but the truth is that they do. Do your research on any keyboards before you download and install them.

5. Touch Step2:switch to GO Keyboard.



6. Touch the name of your new keyboard to select it.

What Can You Do with Your New Keyboard

Keyboards you buy in Google Play can do many things. They can change the key layout, change the color and style of the keys, offer different methods of text input, and even enable you to use an old T9 predictive input keyboard that you may have become used to when using an old “dumb phone” that only had a numeric keypad.



It's Not All Good

NO BUILT-IN WAY TO CHANGE YOUR KEYBOARD

On the standard version of Android, and in many other versions, there is a way to manually change your keyboard. A menu option right in the Language & Input settings screen brings up the keyboard chooser dialog you see in step 6. However, on your HTC One, the only way to access the keyboard chooser dialog is by running the keyboard custom installation.

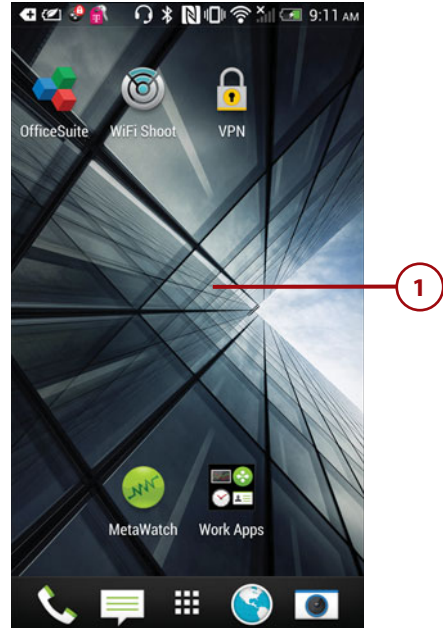
Adding Widgets to Your Home Screens

Some applications that you install come with widgets that you can place on your Home screens. These widgets normally display real-time information, such as stocks, weather, time, and Facebook feeds. Your HTC One also comes preinstalled with some widgets. Here is how to add and manage widgets.

Adding a Widget

Your HTC One should come pre-installed with some widgets, but you might also have some extra ones that have been added when you installed other applications. Here is how to add those widgets to your Home screens.

1. Touch and hold in an open area on your Home screen.
2. Touch the drop-down menu and choose Widgets.
3. Touch and hold a widget to select it. Keep holding the widget as you move to step 4. In this example, we are using the Calendar widget.

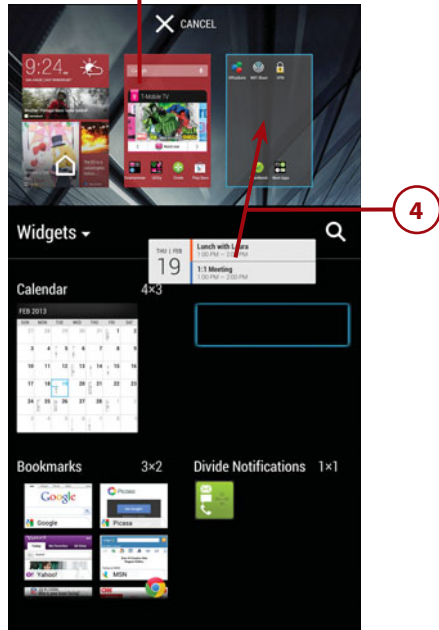


4. Drag the widget to the Home screen panel you want to place it on.
5. Drag the widget to where you want to position it on the Home screen panel.
6. Release your finger to place the widget. Some widgets ask you a few questions after they are positioned.

How Many Widgets Can I Fit?

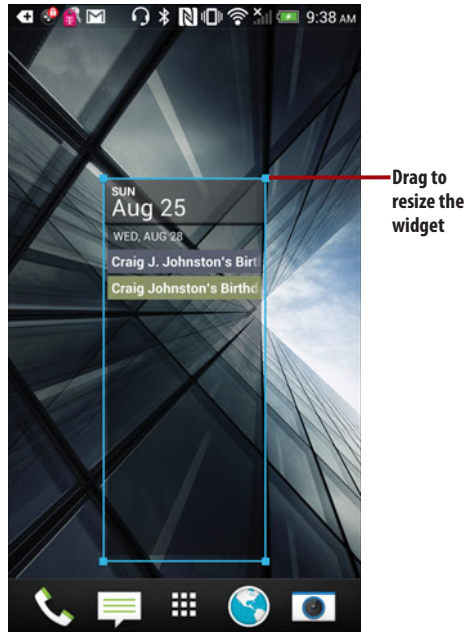
Each part of the Home screen is divided into four blocks across and four blocks down. When you see the list of widgets, you'll notice that each one shows its size in blocks across and down. From that, you can prejudge if a widget will fit on the screen you want it to be on, but it also helps you position it in step 4.

Red indicates that there is not enough space for the widget



Resizing Widgets

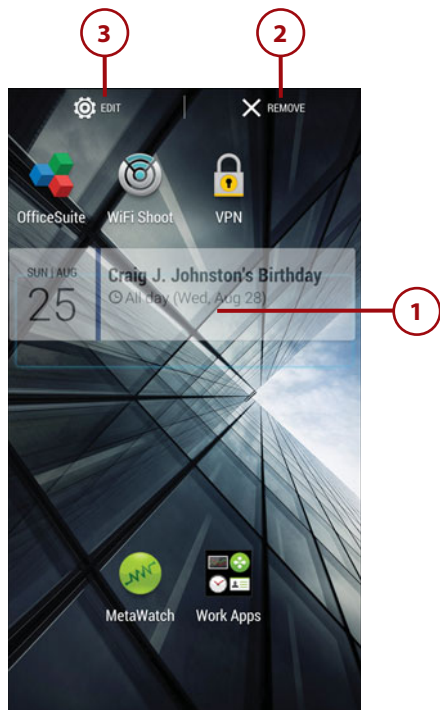
Some widgets can be resized. To resize a widget, touch and hold the widget until you see an outline, and then release it. If the widget can be resized, you will see the resizing borders. Drag them to resize the widget. Touch anywhere on the screen to stop resizing.



Edit or Move a Widget

Sometimes you want to remove a widget or edit its configuration. Here is how:

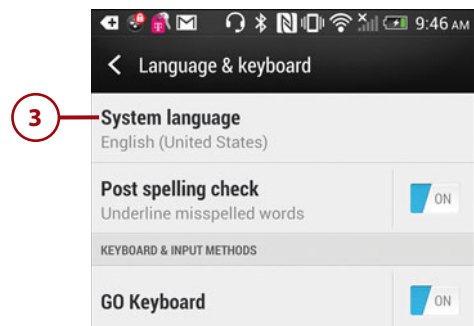
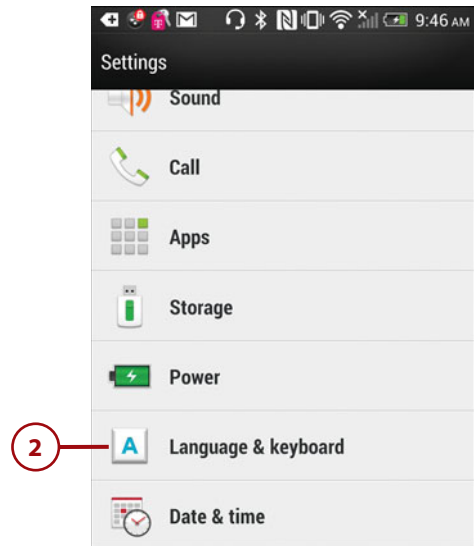
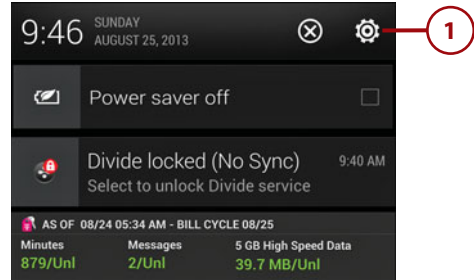
1. Touch and hold the widget until you see a blue shadow, but continue to hold the widget.
2. Drag the widget to the word Remove to remove it.
3. Drag the widget to the word Edit to change the widget's settings.
4. Release the widget.



System Language

If you move to another country or want to change the language used by your HTC One, you can do so with a few touches.

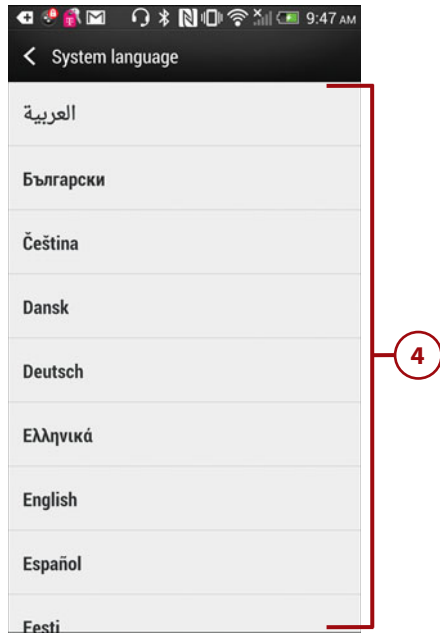
1. Pull down the Notification bar and touch Settings.
2. Touch Language & Keyboard.
3. Touch System Language.



4. Touch the language you want to switch to.

What Obeys the Language Setting?

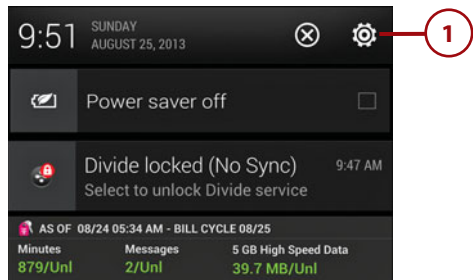
When you switch your HTC One to use a different language, you immediately notice that all standard applications and the HTC One menus switch to the new language. Even some third-party applications honor the language switch. However, many third-party applications ignore the language setting on the HTC One. So, you might open a third-party application and find that all of its menus are still in English.



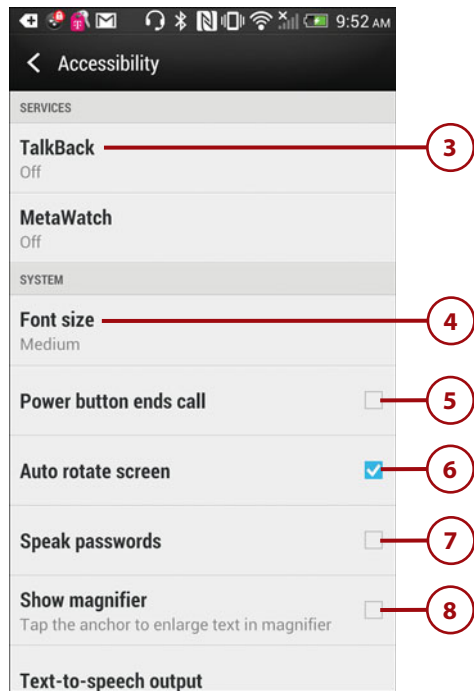
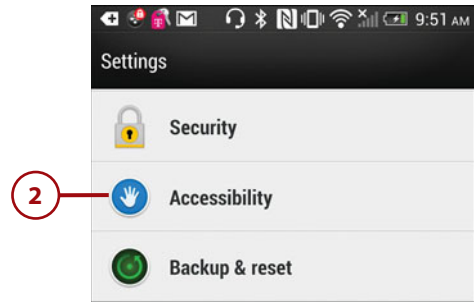
Accessibility Settings

Your HTC One includes built-in settings to assist people who might otherwise have difficulty using some features of the device. The HTC One has the capability to provide alternative feedback, such as vibration, sound, and even the speaking of menus.

1. Pull down the Notification bar and touch Settings.



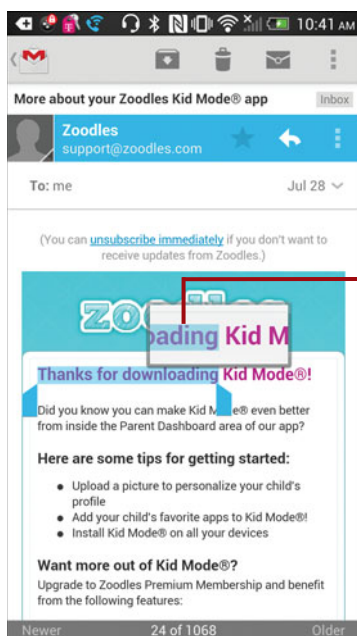
2. Touch Accessibility.
3. Touch to enable or disable TalkBack. When enabled, TalkBack speaks everything, including menus.
4. Touch to set the font size used on your HTC One. You can choose sizes ranging from tiny to huge.
5. Touch to choose whether to use the power button to end calls.
6. Touch to enable automatic screen rotation. When disabled, the screen will not rotate between portrait and landscape modes.
7. Touch to enable or disable the feature where your HTC One speaks your passwords as you type them.
8. Touch to enable or disable showing the magnifier when selecting text.



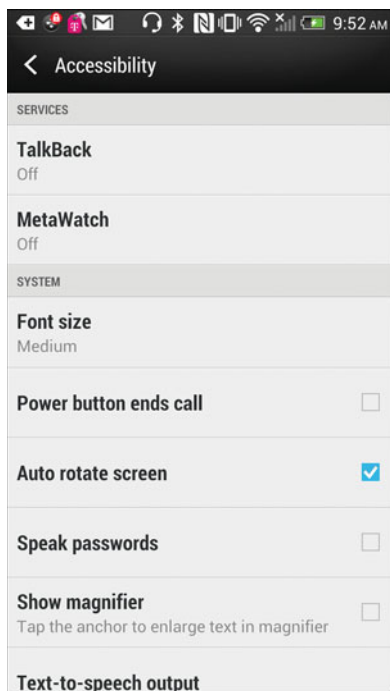
How Does the Magnifier Work?

When you enable the Show Magnifier option, anytime you select text on the screen, and you move the blue markers (known as anchors) to select more or less text, the text around the marker you are moving will be magnified to make it easier to see what text you are selecting.

9. Scroll down for more settings.



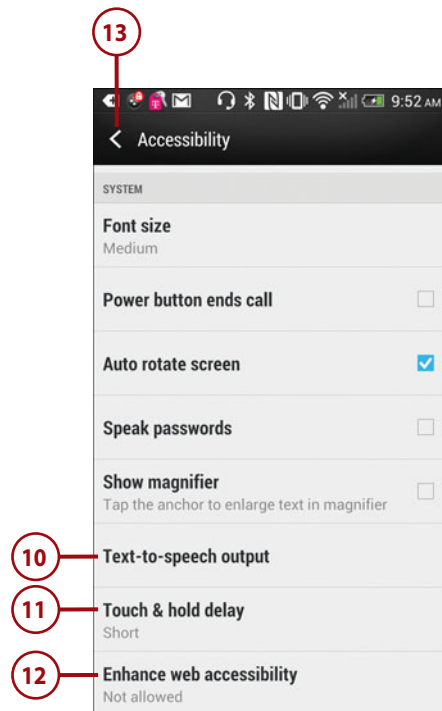
Magnifier



10. Touch to choose which text-to-speech service to use (Google or ones you have installed from the Google Play store), and rate of the speech.
11. Touch to set the touch and hold delay, which is the amount of time your HTC One will wait between when you touch something on the screen and the time it decides you are trying to perform a touch-and-hold gesture.
12. Touch to allow or disallow websites from installing scripts on your HTC One to make accessing their website more accessible.
13. Touch to save your settings and return to the previous screen.

More About Text-to-Speech

By default, your HTC One uses the Google Text-to-Speech service to speak any text that you need to read. You can install other text-to-speech software by searching for them in the Google Play store. After they are installed, they will show as a choice in step 10.



Sound Settings

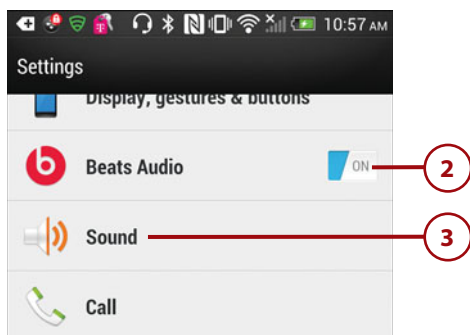
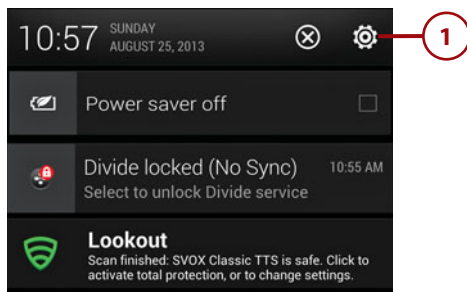
You can change the volume for games, ringtones, and alarms, change the default ringtone and notification sound, and you can control what system sounds are used.

1. Pull down the Notification bar and touch Settings.
2. Touch to enable or disable Beats Audio.

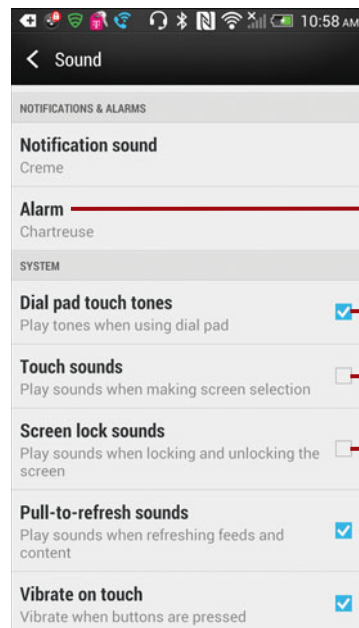
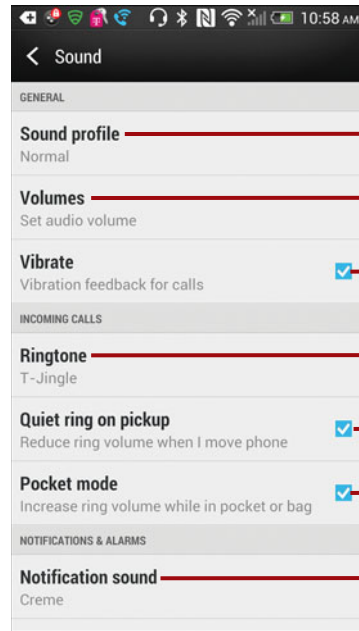
What Is Beats Audio and Can I Control the EQ?

Beats Audio is functionality built in to your HTC One that has preset Equalizer (EQ) settings to make audio sound great on the front-facing BoomSound speakers. Your only option is to turn Beats Audio on or off, and you have no way to change many EQ settings to fine-tune the sound to your taste. If you want to go beyond how Beats Audio sets the EQ settings, try downloading an app like Equalizer (<https://play.google.com/store/apps/details?id=com.smartandroidapps.equalizer>) from Google Play. It provides access to the built-in Android settings that go beyond what Beats Audio offers. Or if you like the way your audio sounds out of the box, leave Beats Audio enabled.

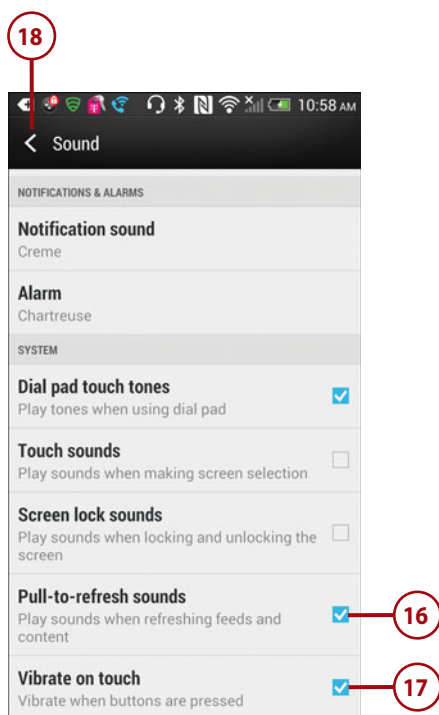
3. Touch Sound.



4. Touch to choose the Sound Profile to use. You can choose between Normal, Vibrate, and Silent.
5. Touch to change the volume levels for games and media, such as videos and music, ringtones and notifications, and alarms.
6. Touch to choose whether your HTC One must vibrate when a phone call you have made connects.
7. Touch to choose the default notification ringtone or add new ones.
8. Touch to choose if the volume of the ringtone should get softer when it detects you picking up your HTC One.
9. Touch to choose if you want the ringtone volume to be increased if your HTC One detects it is in your pocket or in a bag.
10. Touch to change the sound that plays when you receive a new notification.
11. Scroll down for more settings.
12. Touch to choose what sounds play when the alarm is triggered.
13. Touch to choose whether touch tone sounds are used when using the phone dial pad.
14. Touch to choose whether a sound is played when you touch items on the screen.
15. Touch to choose whether a sound is played when you lock and unlock your HTC One.

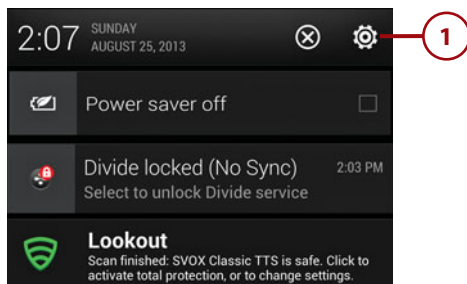


16. Touch to choose whether a sound is played when you receive updated content, like news feeds.
17. Touch to choose whether your HTC One provides a short vibration when you successfully touch a virtual button on the screen.
18. Touch to save your changes and return to the previous screen.



Display, Gestures, and Buttons Settings

1. Pull down the Notification bar and touch Settings.

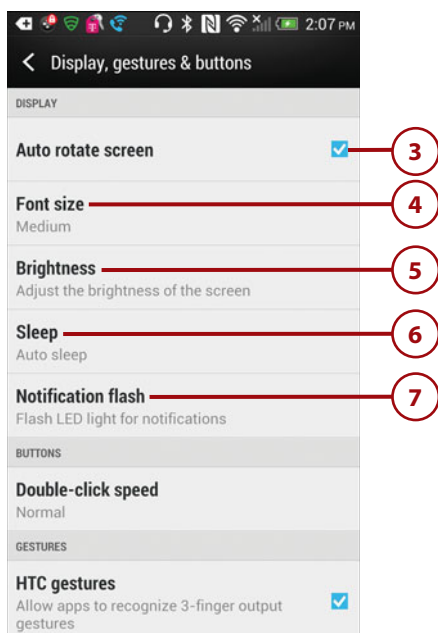
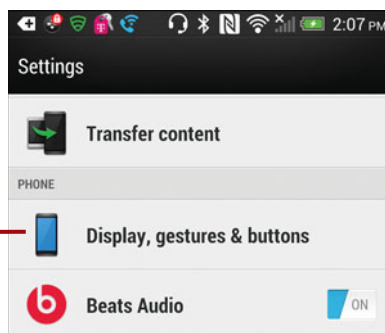


2. Touch Display, Gestures & Buttons.
3. Touch to enable or disable autorotate, which is when your HTC One uses the acceleromoter to detect its orientation and rotate the screen to match it.
4. Touch to choose the font size of all text. Choices range from Small to Extra Large.
5. Touch to change the screen brightness manually or set it to automatic. When on automatic, your HTC One uses the built-in light sensor to adjust the brightness based on the light levels in the room.
6. Touch to choose a sleep timeout or use Auto.

How Does Sleep Timeout Work?

In step 6, you can choose the sleep timeout or leave it set to Auto. This means that you can choose a period of time to elapse of no usage before your HTC One turns the screen off and goes to sleep. If you set it to Auto, your HTC One uses its internal sensors to detect if you are holding it in your hand. If it detects that you are holding it in your hand, it waits for one minute of no activity before putting itself to sleep. If it detects that it is lying on a desk, it puts itself to sleep after only 15 seconds.

7. Touch to choose which notifications the LED will flash for.

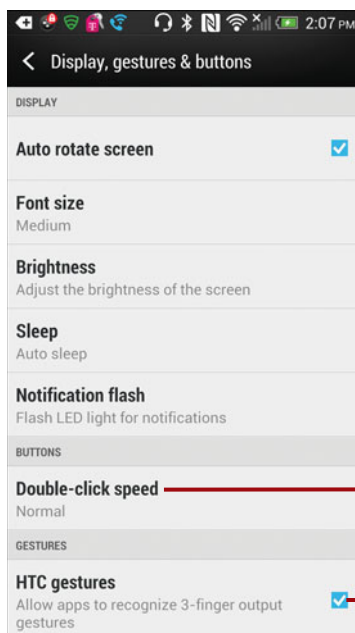


8. Touch to set the double-click speed for the Home and Back buttons. This really should read “double-tap speed” because it refers to the period in-between taps when you want to double-tap the Home or Back buttons. Refer to the Prologue to read why you would want to double-tap these buttons.
9. Touch to choose whether you want to allow apps to recognize the special HTC three-finger gestures. Disable if you have games or other apps that use three or more finger gestures or controls.

What Is the Three-Finger Gesture?

Actually there is only one three-finger gesture, and it is for sharing media content with speakers and other devices using DLNA. If you want to send media to another device that is using DLNA, swipe up on the screen with three fingers. The only issue with enabling this gesture is that it interferes or overrides the regular gesture recognition mechanism, which means that if you use apps or games that use three or more fingers for gestures or controls, they will not work. You will need to turn off the HTC gestures to regain use of those apps or games.

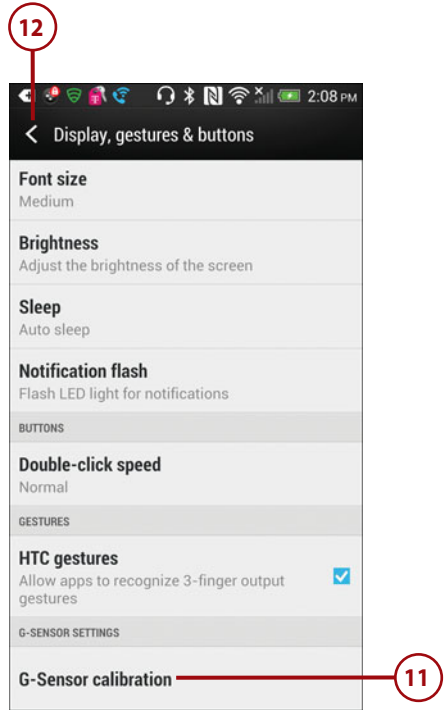
10. Scroll down to calibrate the G-Sensor.



What Is the G-Sensor?

The G-Sensor is the Gyroscope. It detects spatial movement, and it is the primary way your HTC One detects whether you are holding your device vertically or horizontally. If it detects a switch, it rotates the screen to match. If you are finding that the screen rotation is not working properly or not at all, you can calibrate the Gyroscope, or G-Sensor.

11. Touch to calibrate the G-Sensor.
12. Touch to save your changes and return to the previous screen.

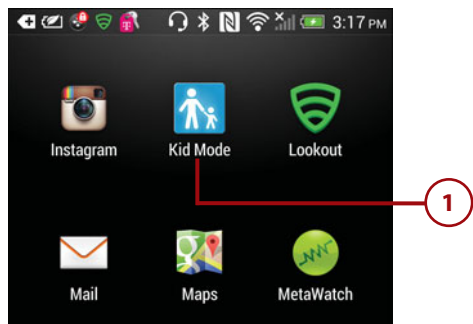


Kid Mode

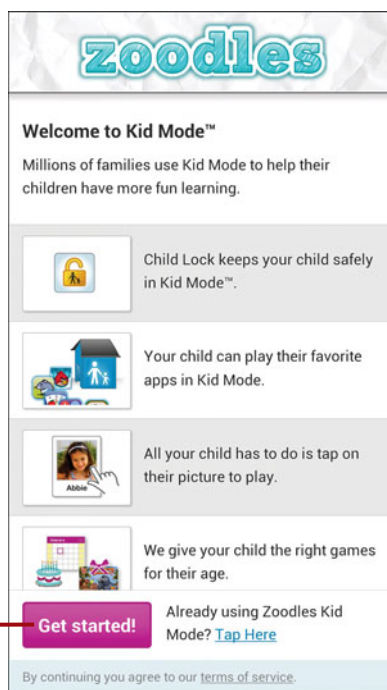
Your HTC One has a built-in feature that allows you to put it into Kid Mode. While in Kid Mode, your HTC One will not allow visits to non-age-appropriate websites and allows access only to the games and apps that you have set up for them.

First-Time Setup

1. Touch the Kid Mode icon.



2. Touch Get Started.
3. Enter your email address.
4. Type a password that you want to use when setting up and configuring Kid Mode.
5. Touch Save.




The screenshot shows a form titled 'Get started with Kid Mode!'. It states 'We ask parents to create a FREE Kid Mode account to help us customize their child's experience.' The form has two main sections: 'Your email' with a text input field containing 'editor.ford.prefect@gmail.com' (indicated by a red circle with the number '3'), and 'Choose a password' with a password input field showing eight dots (indicated by a red circle with the number '4'). Below the password field is a purple 'Save' button (indicated by a red circle with the number '5'). A note below the email field says 'We will NOT sell, share or spam your email.'

6. Type the name of your child.
7. Choose your child's birth month and year.
8. Touch to add a picture of your child if you want to.
9. Touch Done.
10. Touch to edit the list of apps your child has access to.
11. Touch to turn on Child Lock (or enable Kid Mode).

Add a child
Your child taps on their name and photo to sign in.

Nickname
Adam



Birthday
Selects age appropriate activities.
June 2004


Edit photo

Done! Add another

Touch to add another child

Children's Apps
These are the children's apps that Adam can access inside Kid Mode.
[Edit](#)



You need to turn on Child Lock to give Adam access to these apps.

Turn on Child Lock

12. Touch Begin to start enabling Kid Mode.
13. Select Kid Mode.
14. Touch Always to complete the enablement of Kid Mode.
15. Your child will touch on his or her picture to open content specific to them.

How to turn on Child Lock

On the NEXT screen:

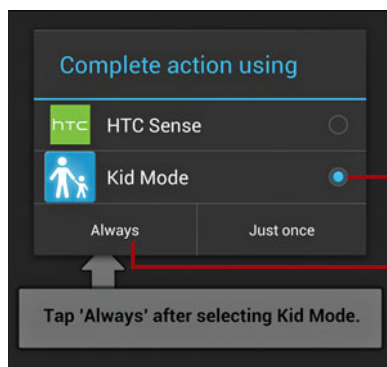
1. Tap Kid Mode
2. Tap Always



Don't forget to select 'Always' on the next screen.

Begin

12



13

14



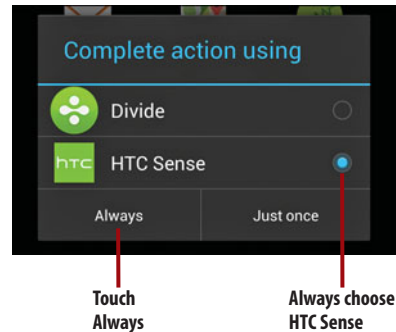
15

How Do I Start Kid Mode in the Future?

Each time you run Kid Mode, you will need to perform only steps 12 to 15. Steps 12 to 15 tell your HTC One that the Kid Mode app should take over control of your phone and even control what happens when you touch the Home button.

Give Control Back to HTC Sense

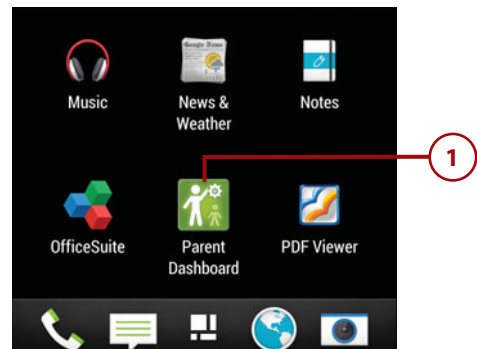
When you exit Kid Mode, you are again prompted to choose which app should now take over control of your HTC One. You must always choose HTC Sense and touch Always, unless you have been told otherwise. In this example, I have installed Divide, which I use for my work email. Divide is one of those apps that must be in control of your device, so I would choose Divide and touch Always.



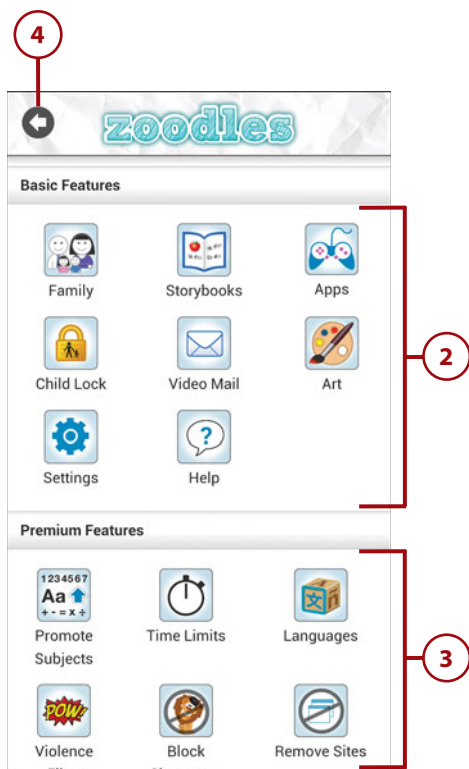
Further Kid Mode Configuration

You can use your desktop computer to browse to <http://Zoodles.com> to log in to your Zoodles account and manage Zoodle. You can also use the Parent Dashboard app to set up many of the features right from your HTC One.

1. Touch Parent Dashboard.



2. Choose one of the basic features to configure.
3. Choose one of the premium features to configure.
4. Touch to exit the Parent Dashboard.



This page intentionally left blank

Index

A

- accented characters, typing, 29
- accepting calls, 268
- Access Point Name (APN), 68
- accessibility settings, 98-101, 130
- accounts, adding, 225
 - Accounts & Sync screen, 226-227
 - Amazon accounts, 369
 - to Email app
 - POP3 or IMAP accounts*, 155-157
 - work email accounts*, 150-153
 - Exchange ActiveSync account, 227-230
 - Flickr for HTC Sense account, 232-233
 - Google accounts, 136-138
 - LinkedIn for HTC Sense account, 230-232
- Accounts & Sync screen, 226-227
- ActiveSync, 151
- Activity Summary card (Google Now), 174
- Add to Playlist dialog, 316-318, 321
- addresses
 - Internet Protocol (IP) address, 57
 - Media Access Control (MAC) address, 57
- Agenda view (Calendar), 220-221
- agenda, viewing, 220-221
- alarms
 - creating, 193-196
 - deleting, 196-197
 - editing, 196
 - settings, 197-198
- Aldiko app, 374
- Allow Apps Rated For dialog, 392
- Allowed Users feature (mobile Wi-Fi hotspots), 82-84
- Amazon, 361, 369
- ambient light sensor, 3
- Android, 16
 - Android Beam
 - enabling, 63
 - sending files, 65-66
 - sending links to content, 64-65
 - Android website, 412
 - apps. *See* apps
 - blogs, 412
 - updating, 397-400
- Android Beam
 - enabling, 63
 - sending files, 65-66
 - sending links to content, 64-65
- APN (Access Point Name), 68
- App Folders, 22
- App Permissions dialog, 388
- app shortcuts, 21
- applications. *See* apps

applying photo effects, 334

apps. *See also* widgets

Aldiko, 374

App Folders, 22

app shortcuts, 21

buying with Google Play,
387-388

Calendar

agenda, 220-221

calendar settings,
206-208

choosing calendars,
204-205

corporate event

invitations, 216-219

event colors, 203

events, 208-213, 220

Google event

invitations, 213-215

main screen, 202-203

Quick Responses,
221-222

Camera, 331

applying photo
effects, 334

opening, 332

recording videos,
346-347

settings, 340-343

taking photos, 333-339

viewing photos,
344-346

Car, 184-186

Chrome

bookmarks, 120-123

browser settings,
126-132

Developer Tools, 133

landscape

orientation, 119

Most Visited sites list,
123-124

multiple tabs, 125

navigating pages,
115-116

Network Action

Predictions, 128

Other Devices list,
124-125

private browsing,
117, 126

web page options,
117-118

zooming in/out, 119

Clock

alarms, 193-198

navigating, 192-193

World Clock, 199-202

closing manually, 405-407
downloading with Google
Play, 385

Gallery

deleting videos, 331

playing videos, 323-325

sharing videos, 327-330

trimming videos, 326

Google Maps

explained, 177-178

getting directions,
179-181

offers, 183-184

settings, 181-183

Google Music Manager

configuring, 39-42

installing, 36-38

Google Now

explained, 171-173

setting up, 173-177

Google Play

buying apps, 387-388

downloading free
apps, 385

installing previously

purchased apps, 390
managing apps,

389-390

navigating, 383-384

settings, 392-393

uninstalling apps, 391

updating apps, 391

Google Wallet, 382-383

installing previously
purchased apps, 390

Kindle

installing, 368

navigating, 369-371

reading books, 371-373

signing in, 369

view options, 374

Kobo, 374

managing in Google Play,
389-390

and memory, 405-407

Messaging. *See*

Messaging app

Music

controlling playback,
296-299

navigating, 294-296

opening, 294

playlists, 300-304

queue, 294

settings, 304-305

Nook, 374

People. *See* People app

permissions, 386

Phone, 265

accepting calls, 268

conference calls,
276-277

configuring, 278-280

controlling calls,
274-275

handling missed calls,
270-271

navigating, 266-267

opening, 266-267

placing calls, 272-273

rejecting calls, 269

using other apps during
calls, 275

Play Books

buying books, 358-361

deleting books, 367

finding free

e-books, 361

My Library, 356-358

options, 364-366

reading books, 362-363

sharing books, 361

uploading documents
to, 367-368

Play Magazines

options, 379

reading magazines,
378-379

subscribing to
magazines, 375-377

Play Music, 305

cloud and data

usage, 311

controlling playback,
315-316

- finding music*, 309
 - installing*, 306
 - listening offline*, 321-322
 - navigating*, 311-312
 - playing music*, 313-314
 - playlists*, 318-321
 - purchasing music*, 310
 - removing music*, 322
 - running other apps while listening to music*, 317
 - uploading existing music to*, 306-308
 - Poweramp, 322
 - PressReader, 375
 - reinstalling, 394
 - switching between, 35
 - uninstalling, 391
 - updating, 391, 394-395
 - Wi-Fi Shoot, 62
 - YouTube
 - main screen*, 348
 - playing videos*, 349-350
 - settings*, 350-353
 - uploading videos to YouTube from*, 353
 - Zinio, 375
 - aptX technology, 6
 - attachments
 - adding to email
 - in Gmail*, 141-142
 - in Mail app*, 160-161
 - adding to text messages, 291
 - audio
 - Music app
 - controlling playback*, 296-299
 - navigating*, 294-296
 - opening*, 294
 - playlists*, 300-304
 - settings*, 304-305
 - Play Music app, 305
 - cloud and data usage*, 311
 - controlling playback*, 315-316
 - finding music*, 309
 - installing*, 306
 - listening offline*, 321-322
 - navigating*, 311-312
 - playing music*, 313-314
 - playlists*, 318-321
 - purchasing music*, 310
 - removing music*, 322
 - running other apps while listening to music*, 317
 - uploading existing music to*, 306-308
 - sound settings, 102-104
 - Auto Upload feature (Camera), 343
 - Autofill data (Chrome), clearing, 129
 - Automatic Date & Time setting, 190-191
 - automatic retrieval of multimedia messages, 288
 - automatic screen rotation, enabling/disabling, 99
- ## B
-
- Back button, 3
 - bandwidth management (Chrome), 132
 - Barnes & Noble, 361
 - battery
 - care and maintenance, 400-401
 - monitoring battery usage, 402-403
 - power-saving options, 404
 - BCC (Blind Carbon Copy), 140
 - Best Shot option (Camera), 335
 - Blind Carbon Copy (BCC), 140
 - BlinkFeed, 17-18
 - Block Contact command, 248
 - Blocked Contacts dialog, 248
 - blocking
 - contacts, 248
 - pop-up windows, 131
 - blogs, Android, 412
 - Bluetooth connections, 45
 - Bluetooth device options, 49
 - Bluetooth passkey, 47
 - Bluetooth profiles, 49
 - Bluetooth settings, 48
 - Bluetooth V4.0 radio, 6
 - pairing with Bluetooth devices, 46-48
 - bookmarks (Chrome)
 - bookmarks folders, 122-123
 - browsing with, 120-121
 - creating, 121-122
 - books
 - buying, 358-361
 - deleting, 367
 - finding free e-books, 361
 - libraries, 356-358
 - reading
 - in Kindle app*, 371-373
 - with Play Books*, 362-363
 - sharing, 361
 - brightness, adjusting, 105
 - Bring Your Own Device (BYOD) policy, 154
 - browsing contact's data, 235-237
 - browsing web with Chrome
 - bookmarks
 - bookmarks folders*, 122-123
 - creating*, 121-122
 - opening*, 120-121
 - browser settings, 126-132
 - Developer Tools, 133
 - landscape orientation, 119
 - Most Visited sites list, 123-124
 - multiple tabs, 125
 - navigating pages, 115-116
 - Network Action Predictions, 128

- Other Devices list, 124-125
 - private browsing, 117, 126
 - web page options, 117-118
 - zooming in/out, 119
 - buttons
 - Back, 3
 - Home, 3
 - Menu, 26, 34
 - power button, 5
 - Recent Apps, 35
 - Start, 8
 - volume buttons, 3
 - buying
 - apps, 387-388
 - books, 358-361
 - BYOD (Bring Your Own Device) policy, 154
- C**
-
- cache, 129, 406
 - Calendar app
 - agenda, viewing, 220-221
 - calendars
 - choosing, 204-205*
 - settings, 206-208*
 - corporate event
 - invitations, responding to, 216-219
 - events
 - adding, 208-212*
 - colors, 203*
 - deleting, 213*
 - editing, 213*
 - proposing new times for, 220*
 - Google event invitations, responding to
 - from Calendar app, 214-215*
 - from email messages, 213-214*
 - main screen, 202-203
 - Quick Responses, 221-222
 - calls
 - accepting, 268
 - conference calls, 276-277
 - controlling, 274-275
 - handling missed calls, 270-271
 - placing
 - from contact entry, 273*
 - with keypad, 272*
 - rejecting, 269
 - using other apps during calls, 275
 - Wi-Fi Calling, 279
 - Camera app, 331
 - applying photo effects, 334
 - flash, 4
 - front camera, 3
 - opening, 332
 - rear camera, 4
 - recording videos, 346-347
 - settings, 340-343
 - taking photos
 - burst of shots, 335*
 - with front camera, 336*
 - with main camera, 333*
 - photo capture modes, 337-338*
 - Zoe photos, 338-339*
 - viewing photos, 344-346
 - capitalizing letters, 29
 - Car app, 184-186
 - Carbon Copy (CC), 140
 - Card Verification Code (CVC)
 - number, 382
 - CC (Carbon Copy), 140
 - cellular networks
 - mobile settings, changing, 67-69
 - Wi-Fi Calling, 70-71
 - changing
 - accessibility settings, 98-101
 - contact group members, 258-259
 - display settings, 105-107
 - keyboard, 91-93
 - language, 97-106
 - sound settings, 102-104
 - wallpaper, 87-88
 - finding wallpaper, 90*
 - live wallpaper, 90*
 - static wallpaper, 91*
 - wallpaper from Gallery pictures, 89*
 - checking contact's status, 240
 - Choose Date Format dialog, 191
 - Choose Video to Upload dialog, 353
 - choosing
 - calendars, 204-205
 - contacts to display, 259-260
 - Chrome
 - bookmarks
 - bookmarks folders, 122-123*
 - browsing with, 120-121*
 - creating, 121-122*
 - browser settings, 126-132
 - Developer Tools, 133
 - landscape orientation, 119
 - Most Visited sites list, 123-124
 - multiple tabs, 125
 - navigating pages, 115-116
 - Network Action Predictions, 128
 - Other Devices list, 124-125
 - private browsing, 117, 126
 - web page options, 117-118
 - zooming in/out, 119
 - cities (World Clock), adding/removing, 201-202
 - Clear Browsing Data dialog, 129
 - clearing
 - Autofill data (Chrome), 129
 - browser cache, 129
 - cookies, 129
 - saved passwords (Chrome), 129

- Clock
 - alarms
 - creating, 193-196
 - deleting, 196-197
 - editing, 196
 - settings, 197-198
 - navigating, 192-193
 - World Clock
 - adding/removing cities, 201-202
 - displaying, 199-200
 - home city, 200
 - closing apps, 405-407
 - cloud, Dropbox, 12
 - colors of events, 203
 - composing
 - email
 - in Gmail, 140
 - in Mail app, 159-160
 - text messages, 289-290
 - conference calls, 276-277
 - configuration. *See* setup
 - Confirm Content PIN dialog, 393
 - connections
 - Android Beam
 - enabling, 63
 - sending files, 65-66
 - sending links to content, 64-65
 - Bluetooth devices, 45
 - Bluetooth device options, 49
 - Bluetooth passkey, 47
 - Bluetooth profiles, 49
 - Bluetooth settings, 48
 - pairing with Bluetooth devices, 46-48
 - cellular networks
 - mobile settings, changing, 67-69
 - Wi-Fi Calling, 70-71
 - mobile Wi-Fi hotspots
 - limiting who can connect, 82-84
 - setting up, 78-81
 - Virtual Private Networks (VPNs), 71
 - connecting to, 74-75
 - deleting, 76
 - disconnecting from, 76
 - editing, 76
 - shortcuts, 76
 - VPN profiles, adding, 72-73
 - Wi-Fi networks, 50-52
 - advanced options, 54-58
 - network options, 53
 - Wi-Fi Direct
 - connecting devices with, 60-62
 - setting up, 59-60
 - Wi-Fi Shoot app, 62
 - contacts
 - adding
 - contact photos, 241-242
 - from email, 248-249
 - manually, 250-251
 - with NFC (Near Field Communications), 252-253
 - from vCards, 251-252
 - blocking, 248
 - browsing, 235-237
 - checking status of, 240
 - contact groups
 - changing members of, 258-259
 - creating, 255-257
 - default communication method, 247-248
 - displaying, 259-260
 - editing, 240-246
 - linking, 261
 - placing calls from, 273
 - ringtones, 247-248
 - settings, 253-255
 - speed dial numbers, 263
 - unlinking, 262
 - Contacts app. *See* People app
 - Content PIN dialog, 393
 - Context menus, 34
 - Continuous Input, 31
 - Continuous Shooting feature (Camera), 341
 - controlling calls, 274-275
 - cookies, clearing, 129
 - copying text, 33
 - corporate event invitations, responding to, 216-219
 - customizing
 - accessibility settings, 98-101
 - Chrome settings, 126-132
 - display settings, 105-107
 - keyboard, 91-93
 - language, 97-102, 106
 - sound settings, 102-104
 - wallpaper, 87-88
 - finding, 90
 - from Gallery pictures, 89
 - live wallpaper, 90
 - static wallpaper, 91
 - CVC (Card Verification Code) number, 382
- ## D
- data usage, limiting, 408-411
 - Data Usage Alert dialog, 409
 - date
 - setting, 190-191
 - syncing, 190
 - default communication method, setting for contacts, 247-248
 - deleting
 - alarms, 196-197
 - books, 367
 - events, 213
 - playlists, 320-321
 - videos, 331
 - VPNs (Virtual Private Networks), 76
 - delivery report, 288
 - Details tab (People app), 235
 - Developer Tools (Chrome), 133
 - DHCP (Dynamic Host Configuration Protocol), 57

dialing calls
 from contact entry, 273
 with keypad, 272

dictation, 32

dictionary
 adding words to, 28
 word suggestions
 from, 27

Digital Living Network
 Alliance (DLNA), 56-57, 325

directions
 with Car app, 184-186
 with Google Maps,
 179-181

disabling
 automatic screen
 rotation, 99
 JavaScript, 131
 TalkBack, 99

disconnecting from
 VPNs (Virtual Private
 Networks), 76

display settings, 105-107

displaying
 agenda, 220-221
 cached processes, 406
 contacts, 259-260
 keyboard, 27
 photos, 344-346
 World Clock, 199-200

DLNA (Digital Living Network
 Alliance), 56-57, 325

documents, uploading to
 Play Books, 367-368

double-tapping, 25

downloading
 apps from Google
 Play, 385
 music from Google
 Music, 308

dragging icons, 25

Dropbox, 12

Dynamic Host Configuration
 Protocol (DHCP), 57

E

earpiece, 3

ebooks. *See* books

editing
 alarms, 196
 events, 213
 playlists
in Music app, 302-304
in Play Music app,
 319-320
 text, 33
 VPNs (Virtual Private
 Networks), 76

effects, applying to
 photos, 334

email
 adding contacts from,
 248-249
 Email app
POP3 or IMAP accounts,
adding, 155-157
work email accounts,
adding, 150-153
 Gmail, 135
composing email, 140
email attachments,
 141-142
email signatures, 145
Gmail labels, 139, 149
Gmail settings, 145-148
Google accounts,
creating, 136-138
marking messages
as important/not
important, 144
muting email
conversations, 144
navigating, 138-139
reading email, 142-143
reporting email as
phishing scams, 144
reporting email as
spam, 144
 Mail app
common account
settings, 165-168
composing email,
 159-160
email attachments,
 160-161
Mail app settings, 165
navigating, 158
Out of Office setting, 163
reading email, 162-163
 sharing videos with,
 327-328

Email app, 150
 POP3 or IMAP accounts,
 adding, 155-157
 work email accounts,
 adding, 150-153

enabling. *See* setup

entering text
 through dictation, 32
 with keyboard, 27-30

equalizer apps, 322

events
 adding to Calendar,
 208-212
 colors, 203
 corporate event
 invitations, responding
 to, 216-219
 deleting, 213
 editing, 213
 Google event invitations,
 responding to
from Calendar app,
 214-215
from email messages,
 213-214
 proposing new times
 for, 220

Exchange ActiveSync
 account, adding, 227-230

exiting Kid Mode, 111

exterior care, 412

F

Facebook, sharing videos
 on, 330

files
 adding to text
 messages, 291

- sending with Android Beam, 65-66
- uploading to Play Books, 367-368
- finding
 - free e-books, 361
 - music on Play Store, 309
 - wallpaper, 90
- first-time setup
 - HTC One, 6-15
 - Kid Mode, 107-110
- Fixed Number Dialing (FND), 278
- flash, 4
- Flickr for HTC Sense account, adding, 232-233
- FND (Fixed Number Dialing (FND), 278
- folders
 - App Folders, 22
 - bookmarks folders, 122-123
- font size, setting, 105
- free apps, downloading, 385
- free e-books, finding, 361
- front camera, 3

G

- Gallery app
 - deleting videos, 331
 - playing videos, 323-325
 - setting pictures as wallpaper, 89
 - sharing videos
 - on Facebook, 330
 - on YouTube, 329
 - with email, 327-328
 - trimming videos, 326
- Gallery tab (People app), 235
- general settings (Messaging app), 287-289
- geo-tagging photos, 342
- gestures
 - double-tapping, 25
 - dragging, 25
 - pinching, 25
 - sliding, 25
 - swiping, 25
 - three finger gesture, 106
 - touching, 24
 - touching and holding, 24
- Global Positioning System (GPS) radio, 6
- Gmail, 135
 - composing email, 140
 - email attachments, 141-142
 - email signatures, 145
 - Gmail labels, 139, 149
 - Gmail settings, 145-148
 - Google accounts, creating, 136-138
 - marking messages as important/not important, 144
 - muting email conversations, 144
 - navigating, 138-139
 - reading email, 142-143
 - reporting email as phishing scams, 144
 - reporting email as spam, 144
- Google accounts, creating, 136-138
- Google Maps
 - explained, 177-178
 - getting directions, 179-181
 - offers, 183-184
 - settings, 181-183
- Google Music Manager
 - configuring, 39-42
 - installing
 - for Mac OS X, 36-37
 - for Windows, 38
- Google Music. *See* Play Music app
- Google Now
 - explained, 171-173
 - setting up, 173-177

- Google Play
 - buying apps, 387-388
 - downloading free apps, 385
 - installing previously purchased apps, 390
 - managing apps, 389-390
 - navigating, 383-384
 - uninstalling apps, 391
 - updating apps, 391
- Google Wallet, 382-383
- GPS (Global Positioning System) radio, 6
- groups
 - contact groups
 - changing members of, 258-259*
 - creating, 255-257*
- G-Sensor, 107
- Gyroscope, 107

H

- handling missed calls, 270-271
- HDR (High Dynamic Range), 331
- HDR mode (Camera), 337
- headphone jack, 5
- help, 412
- hidden networks, adding, 52
- High Dynamic Range (HDR), 331
- Home button, 3
- home city, setting in World Clock, 200
- Home screen, 19-23
 - adding widgets to, 95
 - widgets
 - adding, 93-95, 100*
 - moving, 96*
 - removing, 96*
- HTC One website, 412
- HTC Sense UI website, 7, 10



i-Blason PowerGlider, 401

icons

- dragging, 25
- Launcher icon, 23
- notification icons, 20
- Set Wallpaper, 90
- touching, 24
- touching and holding, 24

images

icons

- dragging, 25*
- Launcher icon, 23*
- notification icons, 20*
- Set Wallpaper, 90*
- touching, 24*
- touching and holding, 24*

photos

- adding to contacts, 241-242*
- applying photo effects, 334*
- geo-tagging, 342*
- setting as wallpaper, 89*
- taking, 333-339*
- viewing, 344-346*
- zooming, 345*
- wallpaper, changing, 87-88
 - finding wallpaper, 90*
 - live wallpaper, 90*
 - static wallpaper, 91*
 - wallpaper from Gallery pictures, 89*

IMAP accounts, adding to
Email app, 155-157

Incognito tab (Chrome),
117, 126

installing

- Google Music Manager
 - for Mac OS X, 36-37*
 - for Windows, 38*
- Kindle app, 368
- Play Music app, 306
- previously purchased
apps, 390

instant mixes, 312, 317

Internet Protocol (IP)
address, 57

IP (Internet Protocol)
address, 57

J-K

JavaScript, disabling/
enabling, 131

keyboard, 27-30

- accented characters,
typing, 29
- changing, 91-93
- landscape keyboard, 30
- Shift key, 29
- showing, 27
- Symbols key, 29

keypad, dialing calls with, 272

Kid Mode, 107

- configuring, 111-112
- exiting, 111
- first-time setup, 107-110
- starting, 111

Kindle app

- installing, 368
- navigating, 369-371
- reading books, 371-373
- signing in, 369
- view options, 374

Kobo app, 374

L

labels (Gmail), 139, 149

landscape keyboard,
switching to, 30

landscape orientation
(Chrome), 119

language, changing,
97-102, 106

Launcher bar, 23

Launcher icon, 23

LED camera flash, 4

left speaker, 3

letters, capitalizing, 29

light sensor, 3

limiting

- connections to mobile
Wi-Fi hotspots, 82-84
- data usage, 408-411

LinkedIn for HTC Sense

- account, adding, 230-232

linking contacts, 261

links, sending to content,
64-65

listening to music. *See* music

live wallpaper, 90

Lock screen

- notifications on, 17
- unlocking, 16

M

MAC (Media Access Control)
address, 57

magazines

- reading, 378-379
- subscribing to, 375-377

Mail app

- common account
settings, 165-168
- composing email, 159-160
- email attachments,
160-161
- Mail app settings, 165
- navigating, 158
- Out of Office setting, 163
- reading email, 162-163

maintenance

- Android updates, 397-400
- applications and memory,
405-407
- battery
 - care and maintenance tips, 400-401*
 - monitoring battery usage, 402-403*
 - power-saving options, 404*

- data usage, limiting, 408-411
- exterior care, 412
- help resources, 412
- Manage SIM Card Messages command (Messaging app), 285
- managing apps in Google Play, 389-390
- ManyBooks.net, 361
- Maps. *See* Google Maps
- marking messages as important/not important in Gmail, 144
- Media Access Control (MAC) address, 57
- memory and applications, 405-407
- Menu button, 26, 34
- menus, 34
- messages. *See* email
- Messaging app, 281
 - messages
 - attaching files to, 291
 - character limits, 290
 - composing, 289-290
 - settings, 282-283
 - general settings, 287-289
 - MMS settings, 286
 - notification settings, 284
 - SMS settings, 285
- MHL (Mobile High-Definition Link) standard, 326
- microphone, 4-6
- micro-USB port, 6
- MMS (Multimedia Message Service). *See* text messaging
- MMS settings (Messaging app), 286
- Mobile High-Definition Link standard, 326
- mobile settings, changing, 67-69

- mobile Wi-Fi hotspots
 - limiting who can connect, 82-84
 - setting up, 78-81
- monitoring battery usage, 402-403
- Mophie Juice Pack, 401
- Most Visited sites list (Chrome), 123-124
- moving widgets, 96
- Multimedia Message Service (MMS). *See* text messaging
- Multimedia Message settings (Messaging app), 286
- multiple Google accounts, 138
- multiple tabs in Chrome, 125
- music
 - Music app
 - controlling playback, 296-299
 - navigating, 294-296
 - opening, 294
 - playlists, 300-304
 - settings, 304-305
 - Play Music app, 305
 - cloud and data usage, 311
 - controlling playback, 315-316
 - finding music, 309
 - installing, 306
 - listening offline, 321-322
 - navigating, 311-312
 - playing music, 313-314
 - playlists, 318-321
 - purchasing music, 310
 - removing music, 322
 - running other apps while listening to music, 317
 - uploading existing music to, 306-308
- Music app
 - controlling playback, 296-299
 - navigating, 294-296

- opening, 294
- playlists
 - creating, 300-302
 - editing, 302-304
- queue, 294
- settings, 304-305
- Music Channel feature (Music app), 305
- muting email conversations in Gmail, 144
- My Library (Play Books), 356-358

N

- navigating
 - Calendar, 202-203
 - directions
 - with Car app, 184-186
 - with Google Maps, 179-181
 - Clock app, 192-193
 - Gmail, 138-139
 - Google Play, 383-384
 - Kindle app, 369-371
 - Mail app, 158
 - Music app, 294-296
 - People app, 233-234
 - Phone app, 266-267
 - Play Music app, 311-312
- Near Field Communications (NFC), 6
 - adding contacts from, 252-253
 - Android Beam
 - enabling, 63
 - sending files, 65-66
 - sending links to content, 64-65
- Network Action Predictions (Chrome), 128
- network connections
 - Android Beam
 - enabling, 63
 - sending files, 65-66
 - sending links to content, 64-65

Bluetooth devices, 45
Bluetooth passkey, 47
Bluetooth profiles, 49
Bluetooth settings, 48
Bluetooth V4.0 radio, 6
pairing with Bluetooth devices, 46-48

cellular networks
mobile settings,
changing, 67-69
Wi-Fi Calling, 70-71

mobile Wi-Fi hotspots
limiting who can connect, 82-84
setting up, 78-81

Virtual Private Networks (VPNs), 71
connecting to, 74-75
deleting, 76
disconnecting from, 76
editing, 76
shortcuts, 76
VPN profiles, *adding*, 72-73

Wi-Fi Direct
connecting devices with, 60-62
setting up, 59-60
Wi-Fi Shoot app, 62

Wi-Fi networks
advanced options, 54-58
connecting to, 50-52
network options, 53

NFC (Near Field Communications), 6
adding contacts from, 252-253
 Android Beam
enabling, 63
sending files, 65-66
sending links to content, 64-65
 Night mode (Camera), 337
 noise-cancelling microphone, 4
 Nook app, 374
 Notification Bar, 20
 Notification LED, 3

notification settings
 (Messaging app), 284

notifications
installing updates from, 397
interacting with, 20
notification icons, 20
reading on Lock screen, 17

numbers, typing, 29

O

offers in Google Maps, 183-184

omnibox (Chrome), 116

opening
 Accounts & Sync screen, 226-227
 Camera app, 332
 Chrome bookmarks, 120-121
 Kid Mode, 111
 Music app, 294
 Phone app, 266-267

Other Devices list (Chrome), 124-125

Out of Office setting (Mail app), 163

P

pairing with Bluetooth devices, 46-48

parental controls. *See* Kid Mode

passkey (Bluetooth), 47

pasting text, 33

Payment Options dialog, 389

People app
contacts
adding from email, 248-249
adding from vCards, 251-252

adding manually, 250-251
adding photos to, 241-242
adding with NFC (Near Field Communications), 252-253
blocking, 248
browsing, 235-237
checking status of, 240
contact groups, 255-259
default communication method, 247-248
displaying, 259-260
editing, 240-246
linking, 261
ringtones, 247-248
settings, 253-255
speed dial numbers, 263
unlinking, 262
navigating, 233-234

permissions, 386

phishing scams, reporting email as, 144

Phone, 265

accepting calls, 268
conference calls, 276-277
configuring, 278-280
controlling calls, 274-275
handling missed calls, 270-271

navigating, 266-267
opening, 266-267

placing calls
from contact entry, 273
with keypad, 272

rejecting calls, 269
using other apps during calls, 275

photos

adding to contacts, 241-242
applying photo effects, 334
geo-tagging, 342
setting as wallpaper, 89
taking
burst of shots, 335

- photo capture modes*, 337-338
- with front camera*, 336
- with main camera*, 333
- Zoe photos*, 338-339
- viewing, 344-346
- zooming, 345
- pictures. *See* photos
- pinching, 25
- placing calls
 - from contact entry, 273
 - with keypad, 272
- Play Books app
 - buying books, 358-361
 - deleting books, 367
 - finding free e-books, 361
 - My Library, 356-358
 - options, 364-366
 - reading books, 362-363
 - sharing books, 361
 - uploading documents to, 367-368
- Play Magazines app
 - options, 379
 - reading magazines, 378-379
 - subscribing to magazines, 375-377
- Play Music app, 305
 - cloud and data usage, 311
 - controlling playback, 315-316
 - finding music, 309
 - installing, 306
 - listening offline, 321-322
 - navigating, 311-312
 - playing music, 313-314
 - playlists
 - creating*, 318-319
 - deleting*, 320-321
 - editing*, 319-320
 - renaming*, 321
 - purchasing music, 310
 - removing music, 322
 - running other apps while listening to music, 317
 - uploading existing music to, 306-308

- Play Store. *See also* Google Play
 - buying books, 358-361
 - finding free e-books, 361
 - sharing books, 361
- playing
 - music. *See* music
 - videos
 - in Gallery app*, 323-325
 - on TV*, 325
 - with YouTube app*, 349-350
- playlists
 - in Music app,
 - creating*, 300-302
 - editing*, 302-304
 - in Play Music app
 - creating*, 318-319
 - deleting*, 320-321
 - editing*, 319-320
 - renaming*, 321
- POP3 accounts, adding to Email app, 155-157
- pop-up windows, blocking, 131
- ports, micro-USB port, 6
- Poweramp, 322
- power button, 5
- power-saving options, 404
- Preload Web Pages dialog, 132
- PressReader, 375
- privacy settings, 13
- private browsing, 117, 126
- profiles
 - Bluetooth profiles, 49
 - VPN profiles, adding, 72-73
- programs. *See* apps
- Project Gutenberg, 361
- proposing new times for events, 220
- protecting HTC One exterior, 412
- proximity sensor, 3

- Purchase dialog (Play Store), 310
- purchasing music on Play Store, 310

Q-R

- queue (Music app), 294
- Quick Responses, 221-222
- radio
 - Bluetooth V4.0 radio, 6
 - Global Positioning System (GPS) radio, 6
 - Near Field Communications (NFC) radio, 6
 - Wi-Fi (WLAN) radio, 6
- reading
 - books
 - in Kindle app*, 371-373
 - with Play Books*, 362-363
 - email
 - in Gmail*, 142-143
 - in Mail app*, 162-163
 - magazines, 378-379
- read report, 288
- rear microphone, 4
- Recent Apps button, 35
- recording videos, 346-347
- reinstalling apps, 394
- rejecting calls, 269
- Reminder Type dialog, 212
- removing
 - cities from World Clock, 201-202
 - music from Play Music app, 322
 - widgets, 96
- renaming playlists, 321
- Repeat dialog, 195
- reporting email as phishing or spam, 144
- resizing widgets, 96

responding to
 corporate event
 invitations, 216-219
 Google event invitations
 from Calendar app,
 214-215
 from email messages,
 213-214
 right speaker, 3
 ringtones, adding to
 contacts, 247-248
 rotating screen, 25

S

Save to People dialog,
 249-250
 saved passwords (Chrome),
 clearing, 129
 Scene mode (Camera), 337
 screen protectors, 412
 screen. *See* touchscreen
 Secure Box, 283
 security, Kid Mode, 107
 configuring, 111-112
 first-time setup, 107-110
 Select Field dialog, 245-246
 Select Label dialog, 243
 Select Location dialog, 263
 Select Number dialog, 263
 Select Photo dialog, 241
 Self-Timer (Camera), 340
 sending
 files, 65-66
 links to content, 64-65
 sensors
 ambient light sensor, 3
 proximity sensor, 3
 separating contacts, 262
 Set Wallpaper icon, 90
 settings. *See also* setup
 accessibility settings,
 98-101
 alarm settings, 197-198
 Bluetooth settings, 48-49
 calender settings, 206-208
 Camera, 340-343
 Chrome, 126-132
 contact settings, 253-255
 date/time, 190-191
 display settings, 105-107
 Gmail settings, 145-148
 Google Maps, 181-183
 Google Play, 392-393
 Kindle app, 374
 language setting,
 97-102, 106
 Mail app
 app settings, 165
 common account
 settings, 165-168
 Messaging app, 282-283
 general settings,
 287-289
 MMS settings, 286
 notification
 settings, 284
 SMS settings, 285
 Music app, 304-305
 Phone app, 278-280
 Play Books app, 364-366
 Play Magazines app, 379
 sound settings, 102-104
 YouTube app, 350-353
 setup. *See also* settings
 Android Beam, 63
 automatic screen
 rotation, 99
 BlinkFeed, 18
 Camera app, 340-343
 Google Music Manager,
 39-42
 Google Now, 173-177
 Google Wallet, 382-383
 HTC One first-time setup,
 6-15
 JavaScript, 131
 Kid Mode, 107-112
 mobile Wi-Fi hotspots,
 78-81
 Phone app, 278-280
 TalkBack, 99
 Wi-Fi Direct, 59-60
 Share Via dialog, 327
 sharing
 books, 361
 videos
 with email, 327-328
 on Facebook, 330
 on YouTube, 329
 Shift key, 29
 shortcuts (app), 21
 Short Message Service
 settings (Messaging
 app), 285
 Short Message Service (SMS).
 See text messaging
 showing. *See* displaying
 Side Button Behavior
 dialog, 198
 signatures (email), 145
 signing in to Kindle app, 369
 SIM card tray, 3
 sizing widgets, 96
 sleep timeout, 105
 sliding, 25
 slow motion video,
 shooting, 347
 SmartSync, 167
 SMS settings (Messaging
 app), 285
 SMS (Short Message Service).
 See text messaging
 Snooze Duration dialog, 198
 Software Updates, 398-399
 Sort By dialog (Play
 Books), 357
 sound settings, 102-104
 spam, reporting email as, 144
 speakers, 3
 special effects, applying to
 photos, 334
 speed dial numbers, adding
 to contacts, 263
 stars (Gmail), 139
 Start button, 8
 starting. *See* opening

static wallpaper, 91
 Status dialog, 212
 status of contacts,
 checking, 240
 subscribing to magazines,
 375-377
 Sweep Panorama mode
 (Camera), 337
 swiping, 25
 switching between apps, 35
 symbols, typing, 29
 Symbols key, 29
 synchronization software,
 Google Music Manager
 configuring, 39-42
 installing, 36-38
 syncing date/time, 190
 System Update dialog, 398

T

taking photos
 burst of shots, 335
 with front camera, 336
 with main camera, 333
 photo capture modes,
 337-338
 Zoe photos, 338-339
 TalkBack, 99
 Teletype (TTY) mode, 279
 text
 copying and pasting, 33
 editing, 33
 entering
 through dictation, 32
 with keyboard, 27-30
 text messaging, 281
 messages
 attaching files to, 291
 character limits, 290
 composing, 289-290
 settings, 282-283
 general settings,
 287-289
 MMS settings, 286

notification settings, 284
 SMS settings, 285
 text scaling (Chrome), 130
 Thread tab (People app), 235
 three finger gesture, 106
 time
 setting, 190-191
 syncing, 190
 touching and holding
 icons, 24
 touching icons, 24
 touchscreen, 3
 gestures
 double-tapping, 25
 dragging, 25
 pinching, 25
 sliding, 25
 swiping, 25
 touching, 24
 touching and
 holding, 24
 rotating, 25
 trimming videos, 326
 troubleshooting
 apps and memory,
 405-407
 battery
 care and maintenance,
 400-401
 monitoring battery
 usage, 402-403
 power-saving
 options, 404
 data usage, 408-411
 exterior care, 412
 help resources, 412
 TTY (Teletype) mode, 279
 TV, playing videos on, 325

U

UMA (Universal Mobile
 Access). *See* Wi-Fi Calling
 uninstalling apps, 391
 Universal Mobile Access
 (UMA). *See* Wi-Fi Calling

unlinking contacts, 262
 unlocking screen, 16
 Updates tab (People app), 235
 updating
 Android, 397-400
 apps, 391, 394-395
 Exchange
 information, 229
 uploading
 documents to Play Books,
 367-368
 music to Play Music app,
 306-308
 videos to YouTube, 353

V

vCards, adding contacts
 from, 251-252
 videos
 deleting from Gallery
 app, 331
 playing
 in Gallery app, 323-325
 on TV, 325
 with YouTube app,
 349-350
 recording, 346-347
 sharing
 with email, 327-328
 on Facebook, 330
 on YouTube, 329
 trimming in Gallery
 app, 326
 uploading to
 YouTube, 353
 viewing. *See* displaying
 Virtual Private Networks.
See VPNs
 voice recognition
 dictation, 32
 Google Now
 explained, 171-173
 setting up, 173-177

volume
 sound settings, 103
 volume buttons, 3

VPNs (Virtual Private Networks), 71
 connecting to, 74-75
 deleting, 76
 disconnecting from, 76
 editing, 76
 shortcuts, 76
 VPN profiles, adding, 72-73

W

wallpaper, changing, 87-88
 finding wallpaper, 90
 live wallpaper, 90
 static wallpaper, 91
 wallpaper from Gallery pictures, 89

web browsing with Chrome
 bookmarks
bookmarks folders, 122-123
browsing with, 120-121
creating, 121-122
 browser settings, 126-132
 Developer Tools, 133
 landscape
 orientation, 119
 Most Visited sites list, 123-124
 multiple tabs, 125
 navigating pages, 115-116
 Network Action Predictions, 128
 Other Devices list, 124-125
 private browsing, 117, 126
 web page options, 117-118
 zooming in/out, 119

websites
 Android, 412
 HTC One, 412
 HTC Sense UI website, 7, 10

widgets, 21. *See also* apps
 adding to Home screens, 93-95, 100
 moving, 96
 removing, 96
 resizing, 96

Wi-Fi Calling, 70-71, 279

Wi-Fi Direct
 connecting devices with, 60-62
 setting up, 59-60
 Wi-Fi Shoot app, 62

Wi-Fi networks
 advanced options, 54-58
 connecting to, 50-52
 mobile Wi-Fi hotspots
limiting who can connect, 82-84
setting up, 78-81
 network options, 53
 Wi-Fi Calling, 70-71, 279
 Wi-Fi Direct, 59
connecting devices with, 60-62
setting up, 59-60
Wi-Fi Shoot app, 62

Wi-Fi Shoot app, 62

Wi-Fi (WLAN) radio, 6

WiSPR (Wireless Internet Service Provider roaming), 56-57

work email accounts, adding to Email app, 150-153

World Clock
 adding/removing cities, 201-202
 displaying, 199-200
 home city, 200

Zinio, 375

Zoe photos
 taking, 338-339
 viewing, 344-346

zooming
 photos, 345
 web pages, 119

X-Y-Z

YouTube app
 main screen, 348
 playing videos, 349-350
 settings, 350-353
 sharing videos on, 329
 uploading videos to YouTube from, 353