

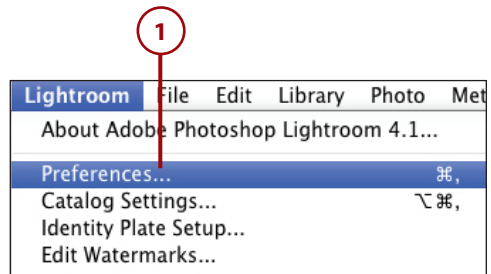
# Using Lightroom with Photoshop and Photoshop Elements

Adobe Photoshop and Photoshop Elements can recognize any develop settings you apply to both raw and nonraw images in Lightroom. To create a successful workflow between these image editors, you must first set up your External Editing Preferences properly in Lightroom. You can then choose to either edit a copy of your catalog images in Photoshop or Photoshop Elements—with or without Lightroom edits applied—or edit the original master file.

## Choose External Editing Preferences

To edit unprocessed images outside of Lightroom, they must be rendered as pixels. The External Editing panel of the Preferences dialog box enables you to choose the render settings.

1. Under Lightroom (Mac) or Edit (Win), choose Preferences.

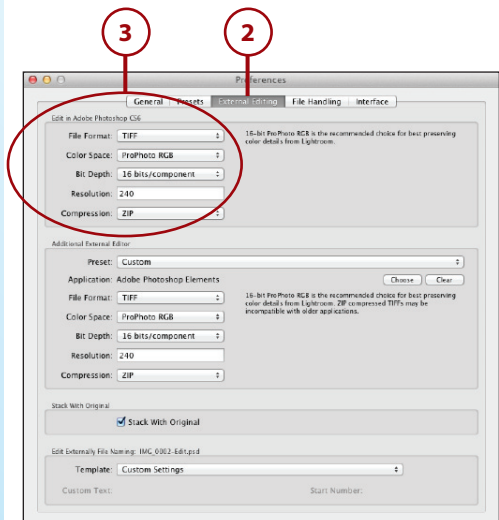


## Keyboard Shortcuts

Press Cmd+comma (Mac) or Ctrl+comma (Win) to display the Preferences dialog box quickly.

2. Click the External Editing tab.
3. The top section of the External Editing tab displays options for editing images in Photoshop.

File Format determines what file format (TIFF or PSD) that the images are rendered as in Photoshop. The PSD format is more efficient when it comes to file saves, opening times, and compression. TIFF is more efficient in respect to metadata updates.



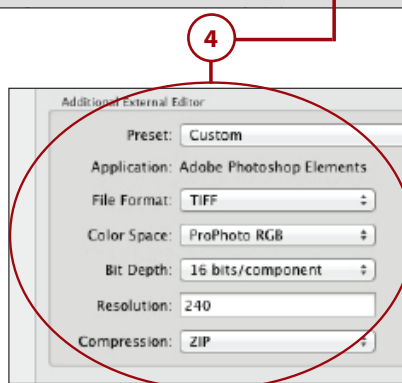
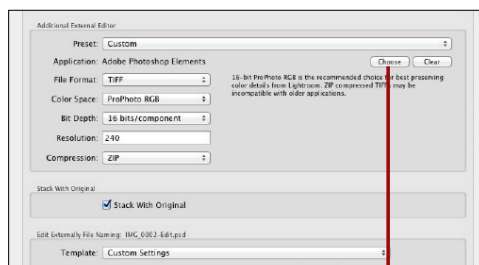
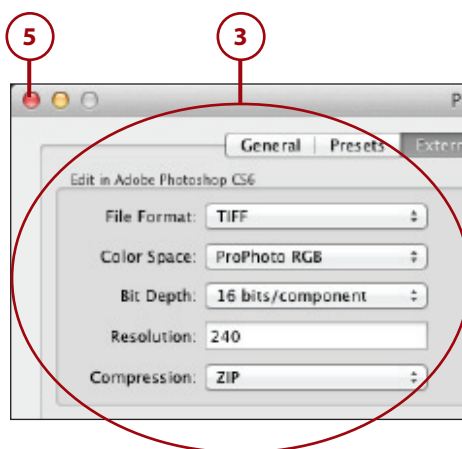
Color Space determines the RGB color space the images are rendered in. ProPhotoRGB contains the widest gamut and is therefore the best choice for preserving color detail from Lightroom.

Bit Depth determines whether images are rendered as 8-bit or 16-bit in an external editing application. 16-bit images preserve the most tonal information out of Lightroom. 8-bit images limit the number of levels to 256 per color channel but are compatible with more external editors.

Resolution determines the number of pixels per inch (ppi) that the images are rendered at. For high-resolution print images, the recommended value is 240 ppi.

Compression enables you to apply lossless ZIP compression to images rendered in TIFF format. ZIP compression can reduce file size without harming any pixel data, unlike the lossy compression that is applied to JPEG images.

4. The bottom section of the External Editing tab enables you to choose an additional external editor. Click the Choose button to select an application other than Photoshop; or as an alternative, choose Photoshop and select different File Format, Color Space, Bit Depth, Resolution, and Compression settings.
5. Click the Close button.



## Maximize PSD Compatibility

The Maximize PSD Compatibility File Handling preference must be enabled in Photoshop for Lightroom to recognize layers saved in PSD files.

## Open Raw Catalog Images in Photoshop

When you choose to further edit a raw image from your Lightroom catalog in Photoshop, Lightroom renders the image using the settings you choose in the External Editing preference pane.

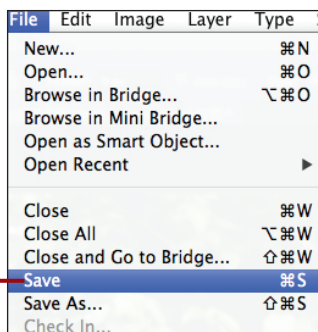
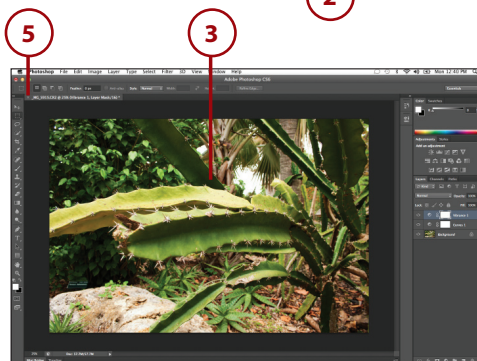
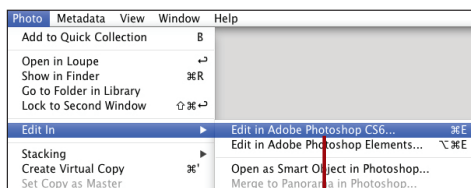
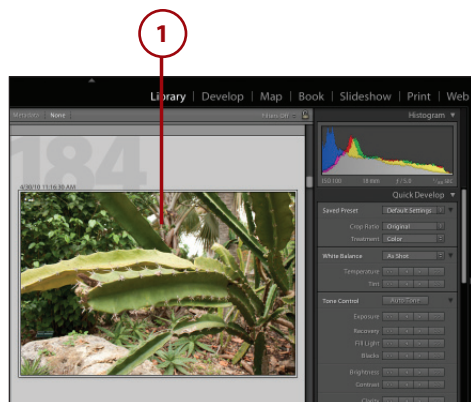
1. From the Library Grid or the Filmstrip, select the photo to open in Photoshop.
2. Choose Photo, Edit In, Edit in Adobe Photoshop or Control-click (Mac) or right-click the thumbnail and choose the command from the contextual menu.

### Keyboard Shortcuts

Press Cmd+E (Mac) or Ctrl+E (Win) to apply the Edit in Adobe Photoshop command quickly.

3. Proceed to edit the image in Photoshop.
4. Choose File, Save to create either a PSD or TIFF, depending on which File Format preference you selected in the External Editing tab of the Lightroom Preferences dialog box.
5. Close the image.

The edited PSD or TIFF is added to the Lightroom catalog automatically and is grouped with the original master image. Lightroom adds the word “Edit” to the end of the filename.



## Open Non-Raw Catalog Images in Photoshop

When you choose to edit a non-raw image in Photoshop, you have the option to create a copy of the image, with or without Lightroom adjustments applied, or else edit the original image.

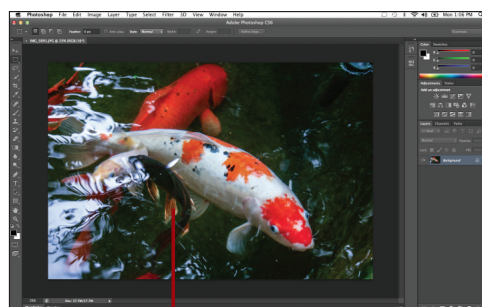
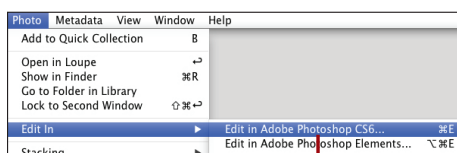
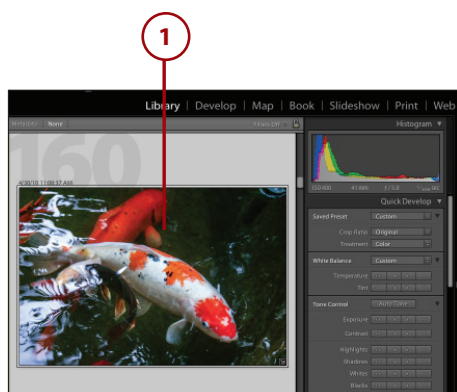
1. From the Library Grid or the Filmstrip, select the photo to open in Photoshop.
2. Choose Photo, Edit In, Edit in Adobe Photoshop or Control-click (Mac) or right-click the thumbnail and choose the command from the contextual menu.
3. In the Edit Photo with Adobe Photoshop CS6 dialog box that appears, choose one of the following three options.

Edit a Copy with Lightroom Adjustments enables you to edit a copy of the image in Photoshop with Lightroom adjustments applied. Enable the Stack with Original option at the bottom of the dialog box to group the copy with the original master file.

Edit a Copy enables you to edit a copy of the image in Photoshop without Lightroom adjustments applied. Enable the Stack with Original option at the bottom of the dialog box to group the copy with the original master file.

Edit Original enables you to edit the original image in Photoshop.

4. Click the Edit button.



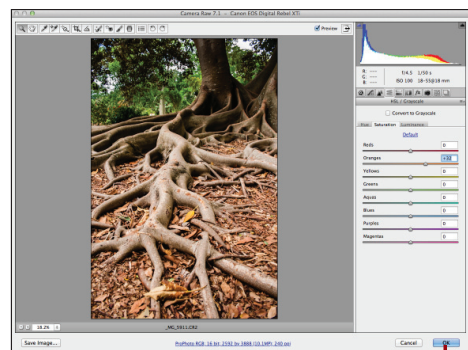
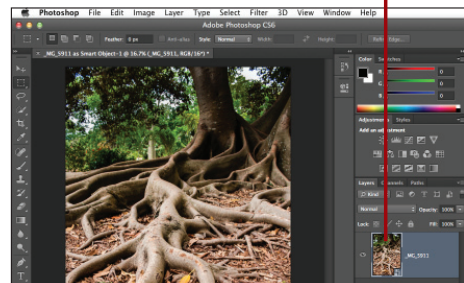
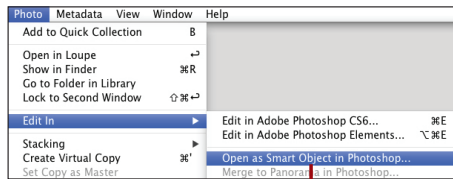
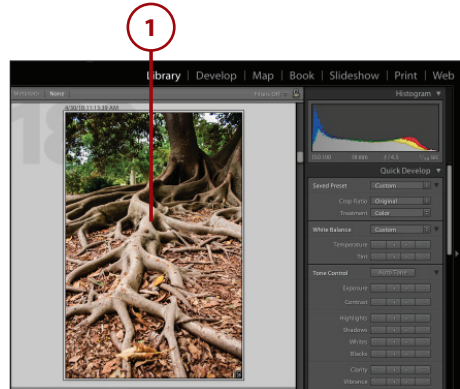
**Photoshop opens a copy of the image with Lightroom adjustments applied.**

## Open Images as Smart Objects in Photoshop

Lightroom enables you to open raw and non-raw catalog images as smart objects in Photoshop. This is especially useful for preserving the ability to edit Lightroom adjustments (via Camera Raw) when compositing catalog images in Photoshop. Smart object functionality is not only nondestructive, but it also prevents you from having to bounce back and forth between applications.

1. From the Library Grid or the Filmstrip, select the photo to open as a smart object in Photoshop.
2. Choose Photo, Edit In, Open as Smart Object in Photoshop or Control-click (Mac) or right-click the thumbnail and choose the command from the contextual menu.
3. To edit any Lightroom adjustments applied to the image prior to opening it in Photoshop, double-click the smart object icon in the Layers panel. Doing so opens the image in Camera Raw, where you can edit any Lightroom adjustments that were previously applied.
4. Click OK to apply the Camera Raw edits.

Photoshop updates the smart object layer.



## Open Catalog Images in Photoshop Elements

If you like working with the automated features available in Photoshop Elements, then you can choose Elements as a secondary external editor in Lightroom's preferences. You can edit a copy of the catalog image, with or without Lightroom adjustments applied, or else edit the original.

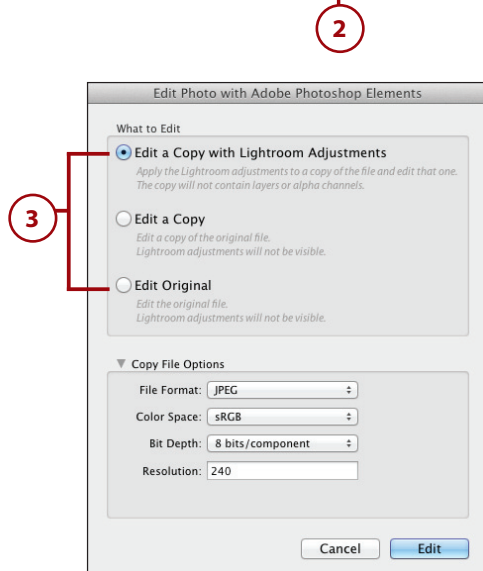
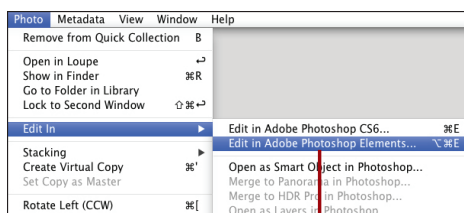
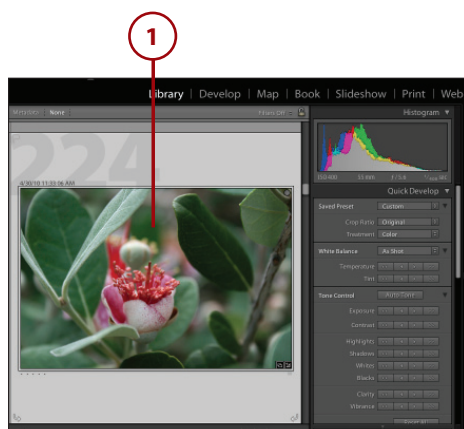
1. From the Library Grid or the Filmstrip, select the photo to open in Photoshop Elements.
2. Choose Photo, Edit In, Edit in Adobe Photoshop Elements or Control-click (Mac) or right-click the thumbnail and choose the command from the contextual menu.

### Keyboard Shortcuts

Press Cmd+Option+E (Mac) or Ctrl+Alt+E (Win) to apply the Edit in Adobe Photoshop Elements command quickly.

3. In the Edit Photo with Adobe Photoshop Elements dialog box, choose one of the following three options.

Edit a Copy with Lightroom Adjustments enables you to edit a copy of the image in Photoshop Elements with Lightroom adjustments applied. Enable the Stack with Original option at the bottom of the dialog box to group the copy with the original master file.

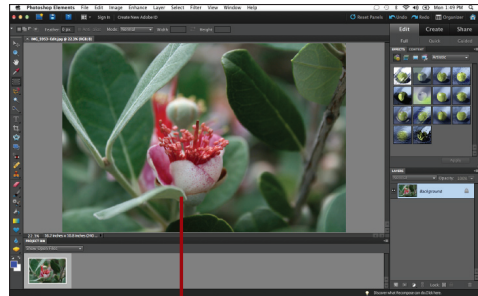
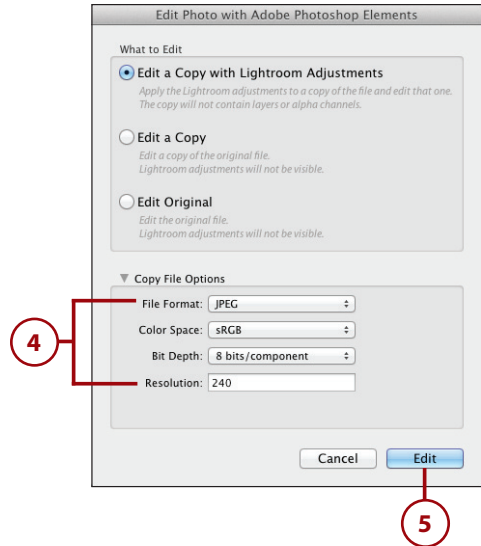


Edit a Copy enables you to edit a copy of the image in Photoshop Elements without Lightroom adjustments applied. Enable the Stack with Original option at the bottom of the dialog box to group the copy with the original master file.

Edit Original enables you to edit the original image in Photoshop Elements.

4. The Edit Photo with Adobe Photoshop Elements dialog box enables you to override the Copy File Options chosen in the External Editing Preferences tab. To do so, choose different settings for the following options: File Format, Color Space, Bit Depth, Resolution, and Compression.
5. Click the Edit button.

Lightroom opens the image in Adobe Photoshop Elements.



**Photoshop Elements opens a copy of the image with Lightroom adjustments applied.**

