

# Microsoft® Expression® Web 2

## *on Demand*

- create a simple Web page
- import Web content
- create an ASP.NET page
- use ASP.NET controls
- create a PHP page
- create a personal Web package
- create Web templates
- design a page using CSS or tables
- add text effects
- insert graphics
- import Adobe Photoshop files
- insert Silverlight Web applications
- insert Flash and Windows media
- highlight graphic hotspots
- execute a script
- change table properties
- insert an inline frame
- create forms
- work with HTML code
- create tag-based styles
- set CSS options
- automate with macros
- connect to a remote Web server
- view compatibility reports
- publish a Web site



IN FULL COLOR

**que**®

Steve Johnson, Perspection, Inc.



# Microsoft® Expression® Web 2 on Demand

## Copyright © 2008 by Perspection, Inc.

All rights reserved. No part of this book shall be reproduced, stored in a retrieval system, or transmitted by any means, electronic, mechanical, photocopying, recording, or otherwise, without written permission from the publisher. No patent liability is assumed with respect to the use of the information contained herein. Although every precaution has been taken in the preparation of this book, the publisher and author assume no responsibility for errors or omissions. Nor is any liability assumed for damages resulting from the use of the information contained herein.

## Library of Congress Cataloging-in-Publication Data

Johnson, Steve, 1961-

Microsoft Expression Web 2 on demand / Steve Johnson.

p. cm.

ISBN 0-7897-3785-X

1. Web sites—Authoring programs. 2. Microsoft Expression Web. I. Title.

TK5105.8883.J66 2008

006.7'86—dc22

2008006965

ISBN-13: 978-0-7897-3785-4

ISBN-10: 0-7897-3785-X

Printed and bound in the United States of America

First Printing: April 2008

11 10 09 08 4 3 2 1

Que Publishing offers excellent discounts on this book when ordered in quantity for bulk purchases or special sales.

For information, please contact: U.S. Corporate and Government Sales

1-800-382-3419 or [corpsales@pearsontechgroup.com](mailto:corpsales@pearsontechgroup.com)

For sales outside the U.S., please contact: International Sales

1-317-428-3341 or [International@pearsontechgroup.com](mailto:International@pearsontechgroup.com)

## Trademarks

All terms mentioned in this book that are known to be trademarks or service marks have been appropriately capitalized. Que cannot attest to the accuracy of this information. Use of a term in this book should not be regarded as affecting the validity of any trademark or service mark.

Microsoft and the Microsoft Office logo are registered trademarks of Microsoft Corporation in the United States and/or other countries.

## Warning and Disclaimer

Every effort has been made to make this book as complete and as accurate as possible, but no warranty or fitness is implied. The authors and the publishers shall have neither liability nor responsibility to any person or entity with respect to any loss or damage arising from the information contained in this book.

## Publisher

Paul Boger

## Associate Publisher

Greg Wiegand

## Acquisitions Editor

Loretta Yates

## Managing Editor

Steve Johnson

## Author

Steve Johnson

## Technical Editor

Beth Teyler

## Page Layout

James Teyler

## Interior Designers

Steve Johnson

Marian Hartsough

## Photographs

Tracy Teyler

## Indexer

Katherine Stimson

## Proofreader

Holly Johnson

## Team Coordinator

Cindy Teeters



# Introduction

---

Welcome to *Microsoft Expression Web 2 On Demand*, a visual quick reference book that shows you how to work efficiently with Expression Web 2. This book provides complete coverage of basic to advanced Expression Web 2 skills.

## How This Book Works

You don't have to read this book in any particular order. We've designed the book so that you can jump in, get the information you need, and jump out. However, the book does follow a logical progression from simple tasks to more complex ones. Each task is presented on no more than two facing pages, which lets you focus on a single task without having to turn the page. To find the information that you need, just look up the task in the table of contents or index, and turn to the page listed. Read the task introduction, follow the step-by-step instructions in the left column along with screen illustrations in the right column, and you're done.

## What's New

If you're searching for what's new in Expression Web 2, just look for the icon: **New!**. The new icon appears in the table of contents and through out this book so you can quickly and easily identify a new or improved feature in Expression Web. A complete description of each new feature appears in the New Features guide in the back of this book.

## Keyboard Shortcuts

Most menu commands have a keyboard equivalent, such as Ctrl+P, as a quicker alternative to using the mouse. A complete list of keyboard shortcuts is available in the back of this book and on the Web at [www.perspection.com](http://www.perspection.com).



## How You'll Learn

**How This Book Works**

**What's New**

**Keyboard Shortcuts**

**Step-by-Step Instructions**

**Real World Examples**

**Workshop**

**Get More on the Web**

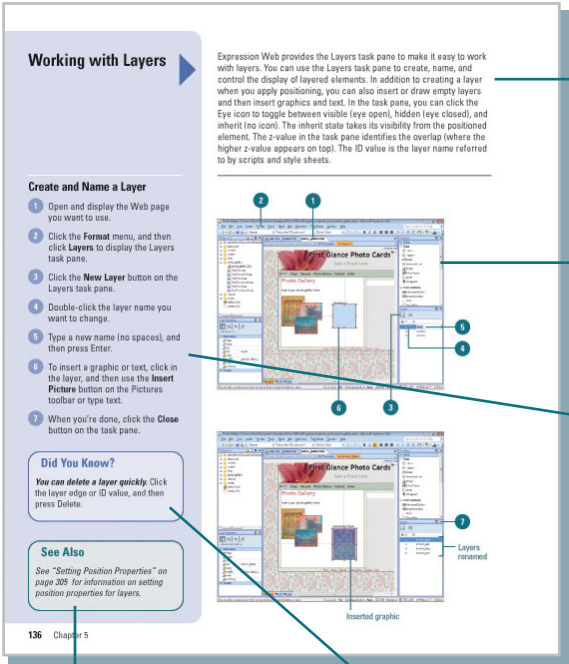
**Get Updates**

**Expression Studio**



# Step-by-Step Instructions

This book provides concise step-by-step instructions that show you “how” to accomplish a task. Each set of instructions include illustrations that directly correspond to the easy-to-read steps. Also included in the text are time-savers, tables, and sidebars to help you work more efficiently or to teach you more in-depth information. A “Did You Know?” provides tips and techniques to help you work smarter, while a “See Also” leads you to other parts of the book containing related information about the task.



Easy-to-follow introductions focus on a single concept.

Illustrations match the numbered steps.

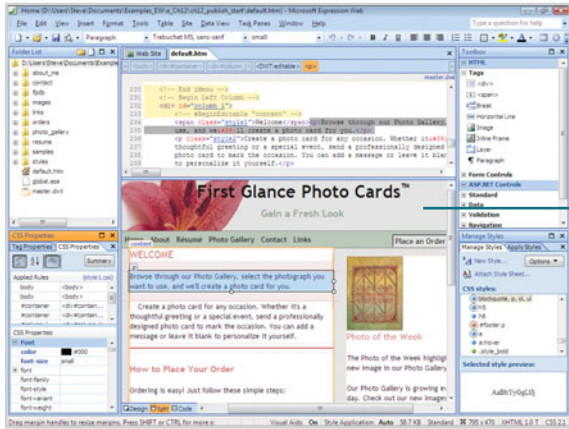
Numbered steps guide you through each task.

See Also points you to related information in the book.

Did You Know? alerts you to tips, techniques and related information.

# Real World Examples

This book uses real world examples files to give you a context in which to use the task. By using the example files, you won't waste time looking for or creating sample files. You get a start file and a result file, so you can compare your work. Not every topic needs an example file, such as changing options, so we provide a complete list of the example files used throughout the book. The example files that you need for project tasks along with a complete file list are available on the Web at [www.perspection.com](http://www.perspection.com).



Real world examples help you apply what you've learned to other tasks.



# Workshop

This book shows you how to put together the individual step-by-step tasks into indepth projects with the Workshop. You start each project with a sample file, work through the steps, and then compare your results with project results file at the end. The Workshop projects and associated files are available on the Web at [www.perspection.com](http://www.perspection.com).

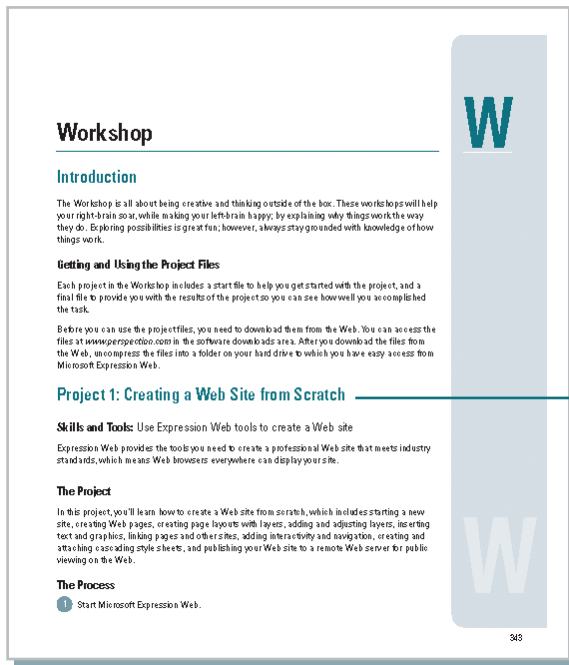
## Get More on the Web

In addition to the information in this book, you can also get more information on the Web to help you get up to speed faster with Expression Web. Some of the information includes:

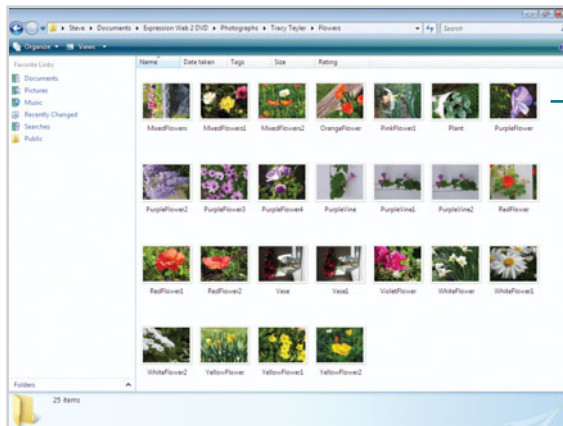
### More Content

- ◆ **Photographs.** Download photographs and other graphics to use in your Web pages.
- ◆ **More Content.** Download new content developed after publication.

You can access these additional resources on the Web at [www.perspection.com](http://www.perspection.com).



The **Workshop** walks you through indepth projects to help you put Expression Web to work.

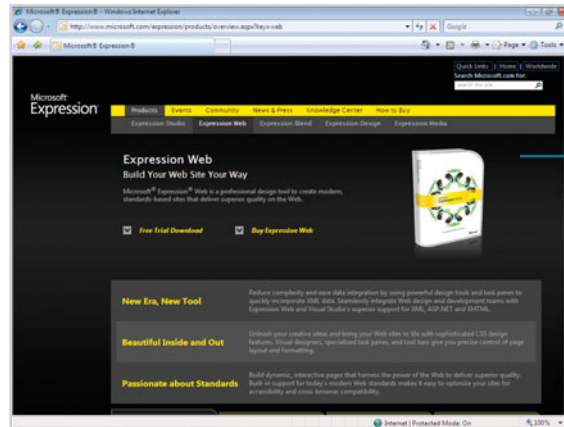


**Additional content** is available on the Web. You can download photographs for your own use.



# Get Updates

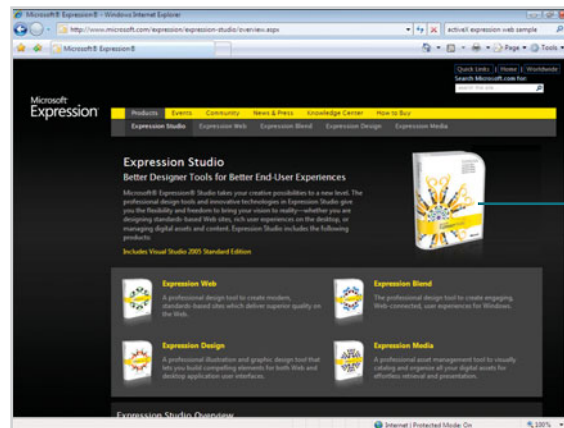
Like any software, it continues to change and get better with updates and patches, so it's important to regularly check the Microsoft Expression Web site at [www.microsoft.com/expression](http://www.microsoft.com/expression), and then click Expression Web under Products.



Check the Expression Web online site to **Get Updates.**

## Expression Studio

Expression Web is part of the Microsoft Expression Studio, which includes Expression Design, Blend, and Media. Expression Design is a professional illustration and graphic design tool that lets you build compelling elements for both Web and desktop application user interfaces. Expression Blend is the professional design tool to create engaging, Web-connected, user experiences for Windows. Expression Media is a professional asset management tool to visually catalog and organize all your digital assets for effortless retrieval and presentation. See Chapter 16, "Working with Expression Studio" on page 385 for more information and step-by-step instructions for using individual Expression Studio programs.



**Expression Studio** combines Web tools to create an expanded Web development environment.



# Working with Web Pages

## Introduction

Once on the Web, you can open other Web pages in the Folder List or Folders views, or you can even open up another page using the Windows menu. Microsoft Expression Web provides several ways to navigate between pages. After you open a Web page, you can use the document tabs at the top of the editing window in Design view, choose the Web page's name from the Window menu, or press Ctrl+Tab until the page you want appears in the window to navigate between pages.

One of the most user-friendly components of Expression Web is its capability to automatically convert text and images into HTML format. When you save a Web site or Web page, it is actually being saved in HTML format. After you create a Web site, you can use the Folder List view to quickly and easily manage individual Web pages.

When looking at a Web site, there are certain details that can make your Web pages a site that visitors will return to. Microsoft Expression Web helps you generate that type of site. Visitors might notice a washed out background picture called a watermark. Or maybe it's a soothing color or light sound as you pass over certain feature of the page. Having a custom feel will express to your visitors that you've spent time and looked at every detail of your site.

You can preview your Web pages in a browser, or in Design view. Because each browser can display your site differently, you will want to examine your site using several of the most popular browser formats. You can also create your own template, instead of using one of the built-in page templates that comes with Expression Web.

## What You'll Do

**Create an HTML Page**

**Open Web Pages from Within a Web**

**Navigate Web Pages**

**Display Web Pages in the HTML Format**

**Manage Web Pages**

**Set the Home Page**

**Change the Web Page Title**

**Change Web Page Properties**

**Insert Background Pictures and Watermarks**

**Change Background Colors**

**Add Background Sound**

**Set Page Size**

**Preview and Print Web Pages**

**Export Web Content**

**Create a Page Template**

**Use a Dynamic Page Template**

**Create a Master and Content Page**

**Save a Web Page with Different Formats**

**Animate Page Transitions**



# Creating an HTML Page

## Create an HTML Page Quickly

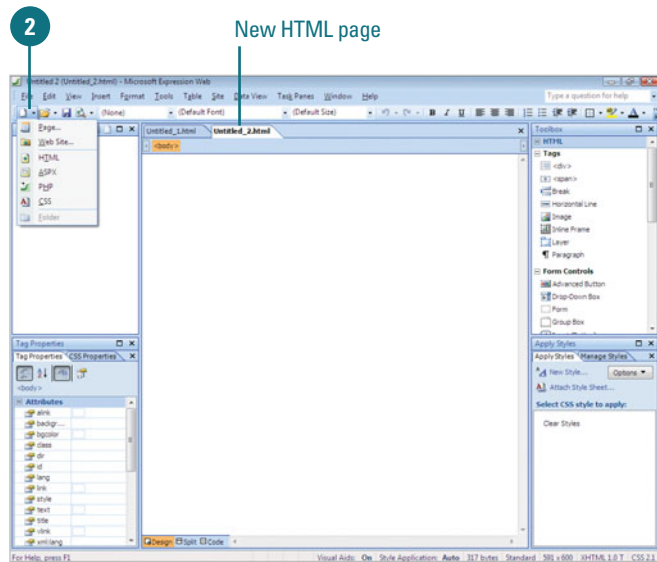
- 1 Click the Web Site tab for the site in which you want a new page.
- 2 Use any of the following methods:
  - ◆ Click the **File** menu, point to **New**, and then click **HTML**.
  - ◆ Click the **New** button list arrow on the Common toolbar, and then click **HTML**.
  - ◆ Click the **New** button on the Common toolbar (applies when HTML is set as the default document type).

**TIMESAVER** Press *Ctrl+N* to create a new HTML page.

An untitled Web page appears without the use of New dialog box.

- 3 Click the **Save** button on the Common toolbar, type a name for the page, and then click **Save**.

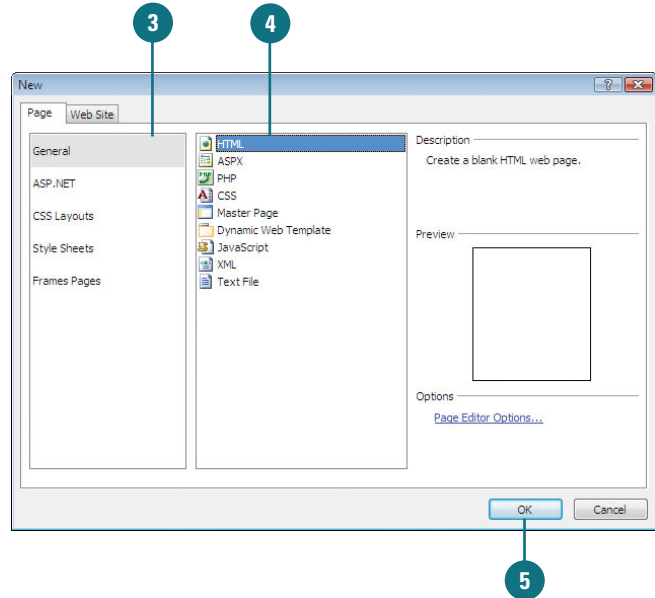
An HTML page is a common Web page. HTML is a coding language that describes the elements on a Web page and instructs a Web browser how to display it. As you add elements to an HTML page in Design view, Expression Web creates the HTML code behind it. If you are familiar with the HTML language, you can use the Code view to make code changes. Split view allows you to display Design and Code view at the same time, which makes it a beneficial learning tool. When you add an element in Design view, you can view the related code in Code view. You can use the New submenu on the File menu or the New button on the Common toolbar to create a new HTML page. With the Page Editor Options dialog box, you can set the default type for new documents and the default file extension—either .html or .htm—for new HTML documents (**New!**).





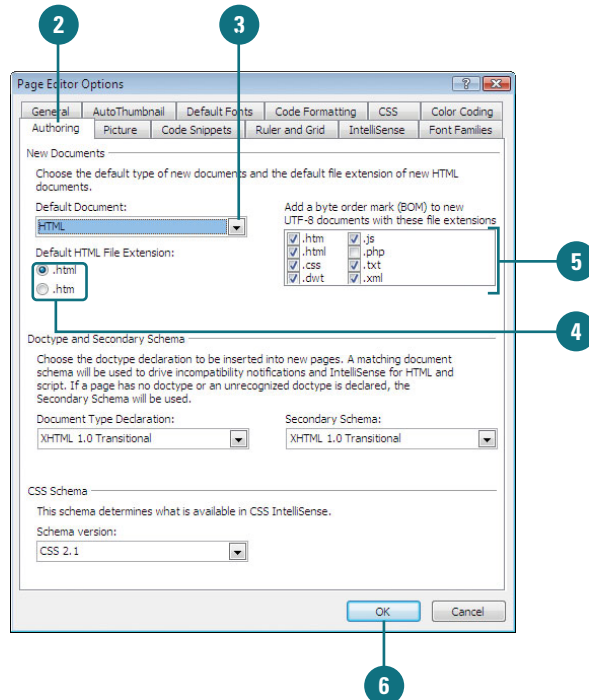
## Create an HTML Page

- 1 Click the **Web Site** tab for the site in which you want a new page.
  - 2 Click the **New** button list arrow on the Common toolbar, and then click **Page**.
  - 3 In the left pane, click **General**.
  - 4 Click **HTML**.
  - 5 Click **OK**.
- An untitled Web page appears.
- 6 Click the **Save** button on the Common toolbar, type a name for the page, and then click **Save**.



## Set the Default Document Type

- 1 Click the **Tools** menu, and then click **Page Editor Options**.
- 2 Click the **Authoring** tab.
- 3 Click the **Default Document** list arrow, and then select the document type you want.
- 4 Click the **.html** or **.htm** option for the default HTML file extension (**New!**).
- 5 To add a byte order mark (BOM) to a new UTF-8 document, select the check boxes next to the extensions you want, or deselect the ones you don't want (**New!**).
- 6 Click **OK**.





# Opening Web Pages from Within a Web

## Open a Web Page in Folders View

- 1 Open the Web site with the Web page you want to open.
- 2 Click the Web Site tab.
- 3 Click the **Folders** button.
- 4 Double-click the icon or file name representing the page you want to access.

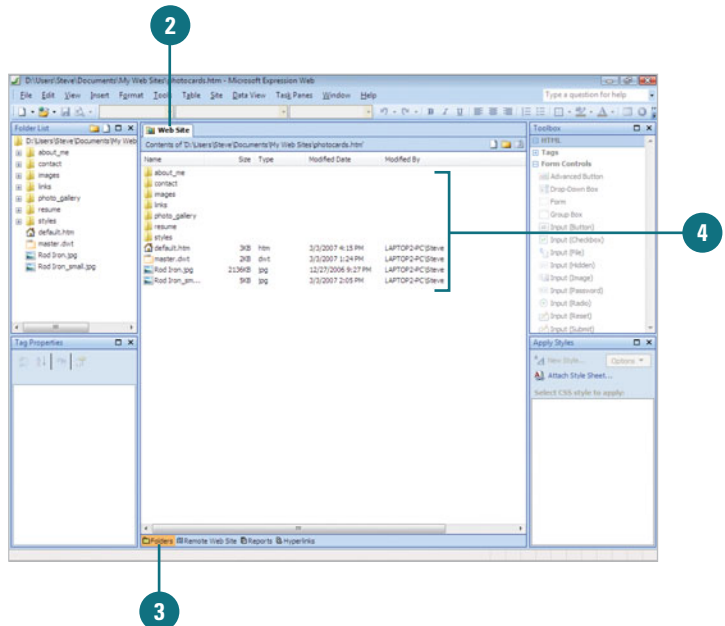
### Did You Know?

**You can open a linked page from Design view.** Press and hold Ctrl and click a hyperlink in the page, or right-click a hyperlink in a page that's already open, and then click Follow Hyperlink.

### See Also

See "Opening an Existing Web Page" on page 13 for information on opening an external Web page.

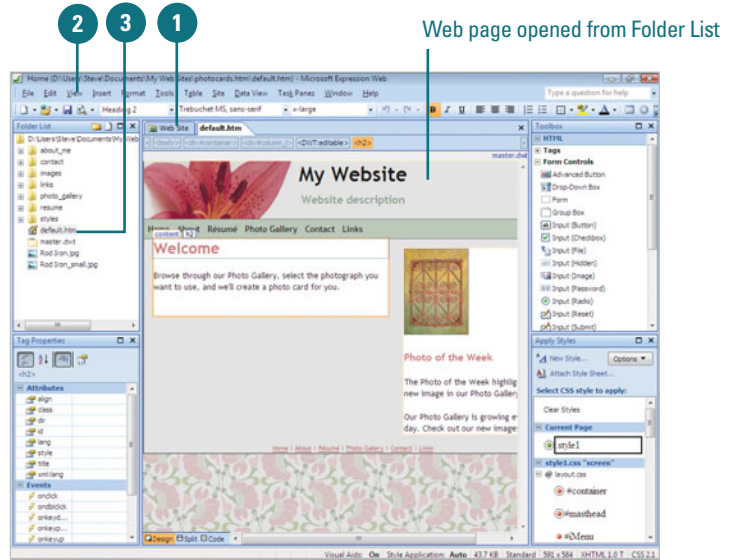
Expression Web allows you to multi-task, which means you can have more than one Web page open at the same time. After you open a Web site, you can quickly open Web pages in Folders view, or from the Folder List instead of using the Open button on the Common toolbar or the Open command on the File menu. If you want to view open Web pages in a separate Expression Web window, you can display the page, and then choose Open in New Window from the Window menu. You can press Alt+Tab to switch between the separate windows. Instead of starting from scratch to create a new page, you can open a copy of an existing page with the default new Web page title of Untitled\_1.htm.





## Open a Web Page Using the Folder List

- 1 Open the Web site with the Web page you want to open.
- 2 If necessary, click the **View** menu, and then click **Folder List** to display the Folder List.
- 3 Double-click the page you want to open.

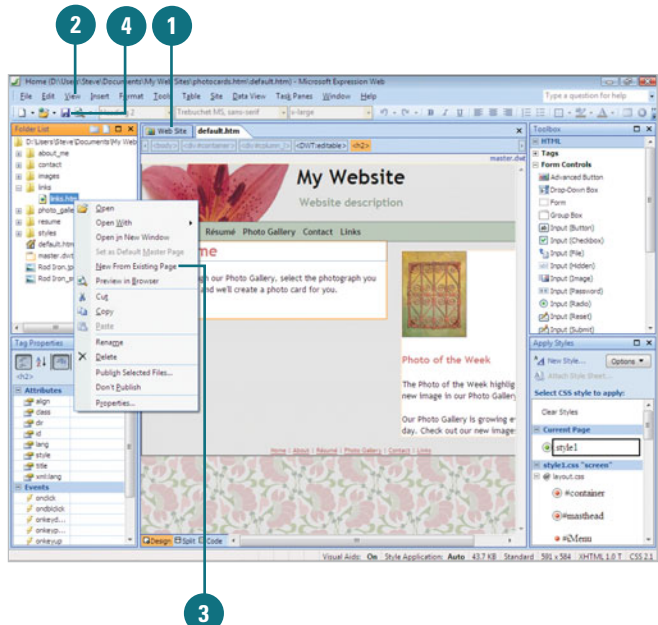


## Open a Copy of a Web Page Using the Folder List

- 1 Open the Web site with the Web page you want to open.
- 2 If necessary, click the **View** menu, and then click **Folder List** to display the Folder List.
- 3 Right-click the page you want to copy, and then click **New From Existing Page**.

A new untitled page appears in the Editing window with content and formats from the original template Web page.

- 4 Click the **Save** button on the Common toolbar.
- 5 Navigate to the Web site folder location where you want to add pages.
- 6 Type a name for the page, or use the suggested name, and then click **Save**.



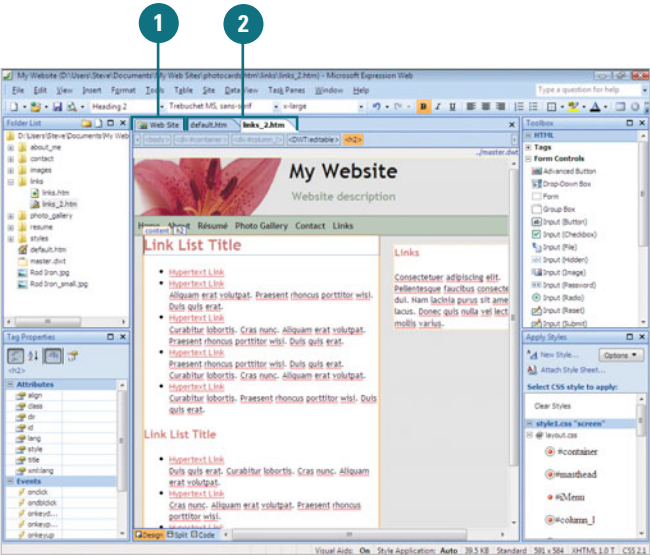


# Navigating Web Pages

## Navigate Web Pages Using Document Tabs

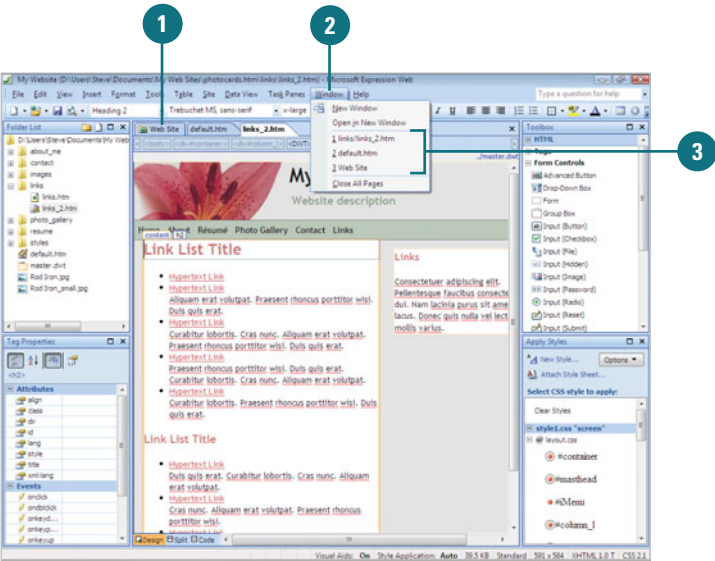
- 1 Open the Web site with the Web page you want to display, and then open the Web page.
- 2 Click the document tab with the page you want to display.

Expression Web provides several ways to navigate between pages. After you open a Web page, you can use the document tabs at the top of the Editing window, choose the Web page's name from the Window menu, or press Ctrl+Tab until the page you want appears in the window to navigate between pages.



## Navigate Web Pages Using the Windows Menu

- 1 Open the Web site with the Web page you want to display, and then open the Web page.
- 2 Click the **Window** menu.
- 3 Click the page you want to open. The Web page opens in Page view.





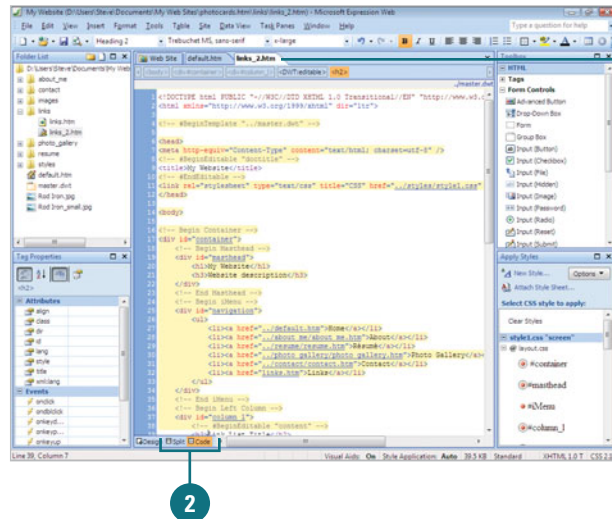
# Displaying Web Pages in the HTML Format

## Display a Web Page in HTML

- 1 Open the Web page you want to display in the HTML format.
- 2 Click the **Split** or **Code** button at the bottom of the window.

The Web page appears in HTML coded form.

One of the most user-friendly components of Expression Web is its capability to automatically convert text and images into HTML format. If you're familiar with HTML, you might be comfortable enough to work in this mode. HTML adds a series of format instructions to your content using tags, such as `<i>`, that indicate how to format the text for display on the Web. Use the Quick Tag Selector to select any tag in your Web page. Use the Quick Tag Editor to insert, wrap, and edit HTML tags. Expression Web uses colored text to distinguish between elements when working in HTML format.

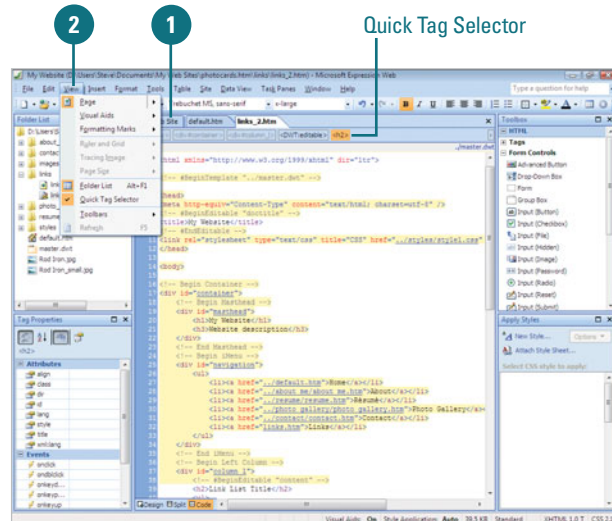


## Display HTML Tags in Design View

- 1 Open the Web page you want to display HTML tags.
- 2 Click the **View** menu, and then click **Quick Tag Selector**.

HTML tags appear in capsule-size, six-sided frames within the text.

- 3 To turn off HTML tags, click the **View** menu, and then click **Quick Tag Selector** again.





# Managing Web Pages

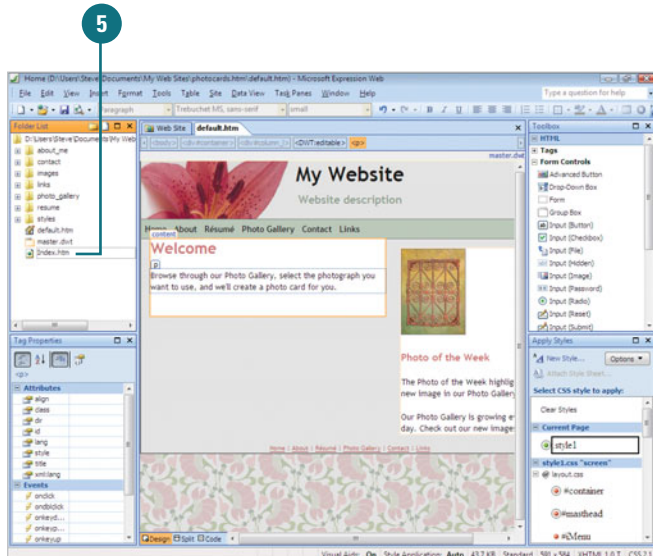
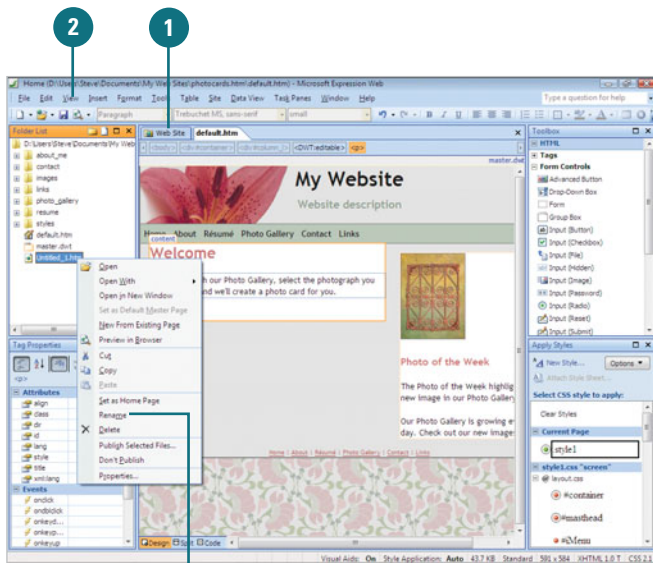
## Rename a Web Page

- 1 Open the Web site with the Web page you want to rename.
  - 2 If necessary, click the **View** menu, and then click **Folder List** to display the Folder List.
  - 3 In the Folder List, right-click the page you want to rename, and then click **Rename**.
- TIMESAVER** Click the file name in the Folder List, click the file again to highlight it.
- 4 Select the name of the Web page file, except the extension, such as *.htm*.
  - 5 Type a new name, and then press Enter.

### Did You Know?

**You can delete a Web page.** In the Folder List, right-click the Web page you want to delete, click Delete, and then click Yes.

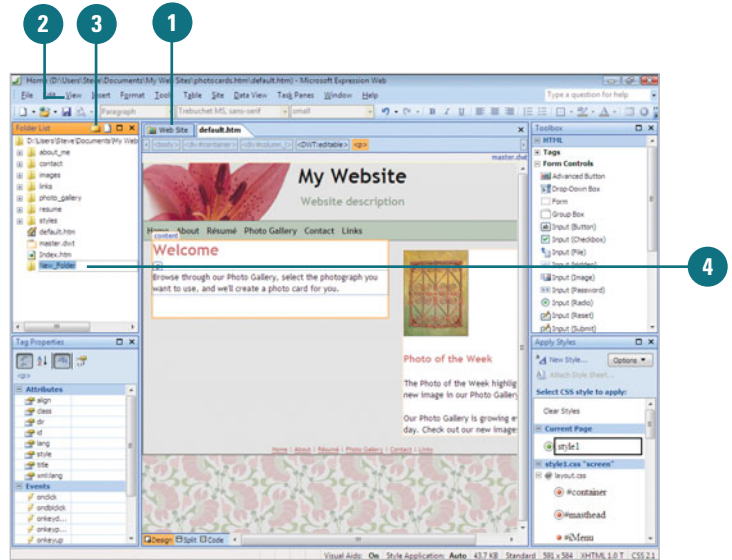
After you create a Web site, you can use the Folder List to quickly and easily manage individual Web pages, files and folders. If a page name is not exactly what you want, you can quickly rename it. The page name is the file name in your folder list, such as default.htm. You can create and name a new folder and move pages to a different location. If you no longer need or want a Web page, you can remove it. You can determine whether you want the page deleted from your hard drive or just from the Web.





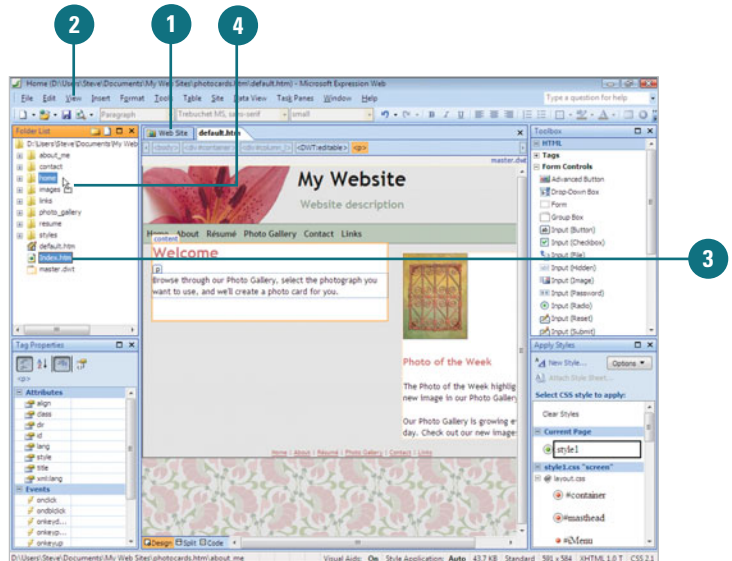
## Create a New Folder

- 1 Open the Web site with the Web page you want to rename.
- 2 If necessary, click the **View** menu, and then click **Folder List** to display the Folder List.
- 3 Click the **New Folder** button.
- 4 Type a new name, and then press Enter.



## Move a Web Page

- 1 Open the Web site with the Web page you want to move.
- 2 If necessary, click the **View** menu, and then click **Folder List** to display the Folder List.
- 3 In the Folder List, display the page you want to use.
- 4 Drag the page icon to the position where you want it to occupy on your site.



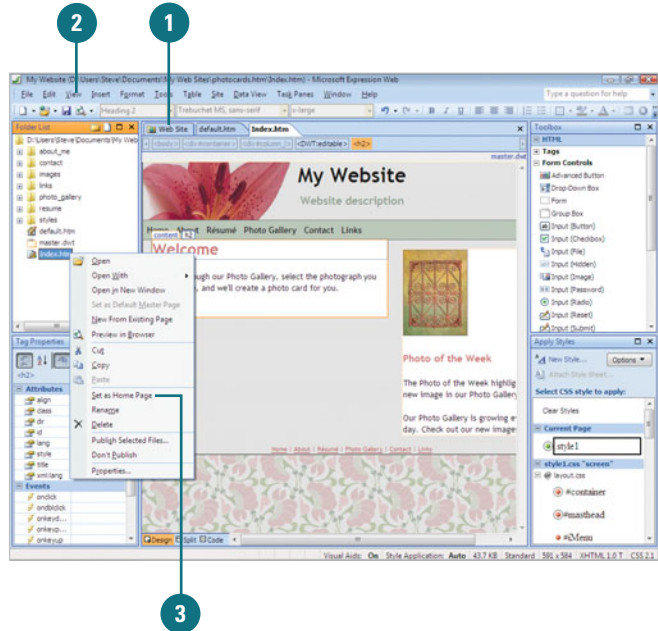


# Setting the Home Page

## Set a Web Page as the Home Page

- 1 Open the Web site with the Web page you want to change.
- 2 If necessary, click the **View** menu, and then click **Folder List** to display the Folder List.
- 3 In the Folder List, right-click the page you want to set as the new home page, and then click **Set as Home Page**.

When you create a Web site using a template, Expression Web automatically creates a home page called *default.htm*, which is the first page visitors see when they visit your site. If you already have a home page or want to create a different one, you can quickly set the one you want as the new home page using the Folder List.





# Changing the Web Page Title

## Change the Web Page Title

- 1 Open the Web site with the Web page you want to change.
- 2 If necessary, click the **View** menu, and then click **Folder List** to display the Folder List.
- 3 In the Folder List, right-click the page you want to change, and then click **Properties**.

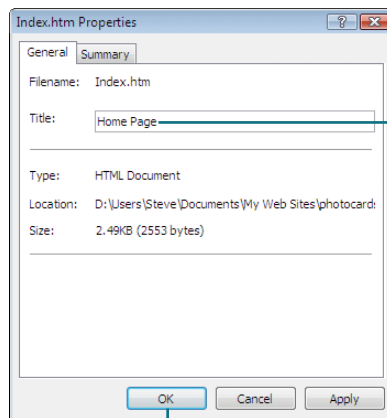
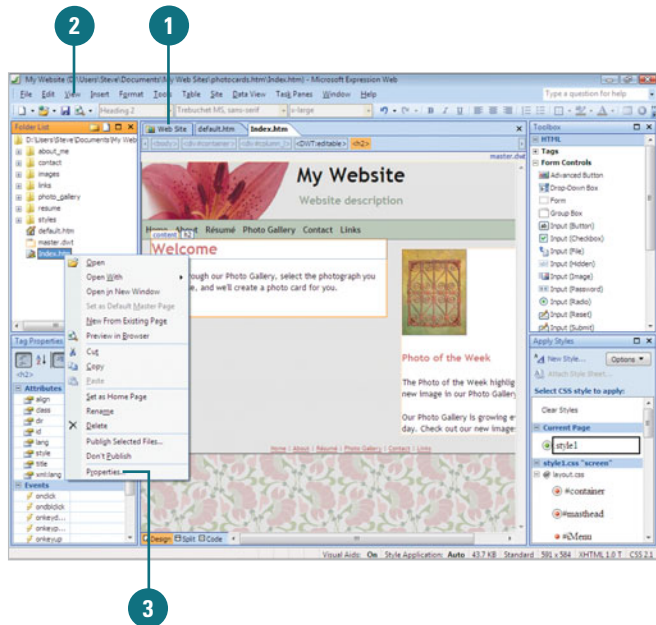
The Properties dialog box opens, displaying the General tab with the current title selected.

- 4 Type a new name for the title.
- 5 Click **OK**.

### Did You Know?

*You can change a Web page title in the Title column.* If the Title column in the Editing window is enabled, you can select the title text, and then type a new title.

A Web page title is the text that visitors see on the title bar of their Web browser when they display the Web page. Expression Web automatically sets the Web page title to the same text as the Web page file name. However, the two perform different tasks. The Web page title displays a message, while the Web pane name identifies a file. When you save a Web page, you can change the title. If you didn't change the title during the save process or you want to change it, you can use the Properties dialog box.





# Changing Web Page Properties

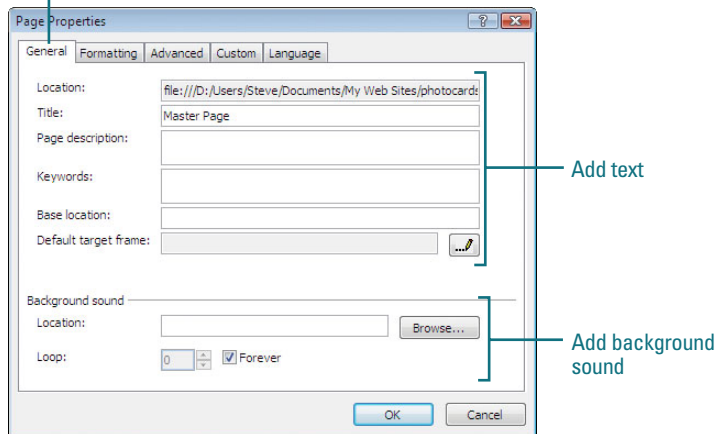
## Change Web Page Properties

- 1 Open the Web site with the Web page you want to change, and then click the Web page tab.
- 2 Click the **File** menu, and then click **Properties**.
- 3 Click the tab you want to use, and then select the options you want:
  - ◆ **General.** Use this tab to change the Web page title, add a page description, specify keywords for search engines, and insert a background sound. You can also specify a base location, which changes the root location (where your home page is typically located).
  - ◆ **Formatting.** Use this tab to insert a background image, and make it a watermark (transparent). To delete a background, select the image path and delete it. You can also use this tab to change the background, text, or link colors on the current page. If you insert a background sound, you can also select the look option.

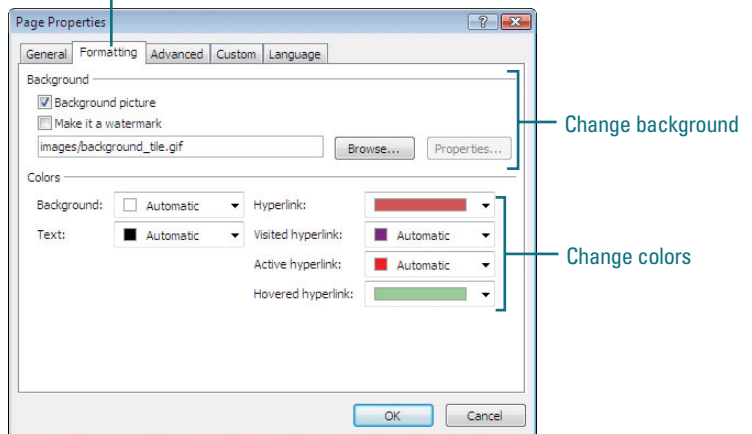
*Continue Next Page*

Expression Web allows you to change individual Web page properties using the Page Properties dialog box. You can change the Web page title, add a page description, and specify keywords for search engines (which aren't used to much anymore; most search engines use other methods). You can also insert a background sound or image, make the background image a transparent watermark, or change the color. When you insert a background sound, it plays once when you open the Web page unless you select the Loop option. In addition, you can change the color of page text and hyperlinks. For advanced feature, you can set page margins, work with code snippets, or specify a language.

### General properties



### Formatting properties





- ◆ **Advanced.** Use this tab to set margins for the current page. However, it's more efficient to make margin changes using CSS.
- ◆ **Custom.** Use this tab to add, modify, or remove custom code snippets based on system and user variables. A code snippet is a reusable segment of code.
- ◆ **Language.** Use this tab to specify the page language and HTML encoding you want to use. These options make sure your Web browser and Expression Web uses the right characters set for the selected language. The default for HTML encoding is Unicode (UTF-8). You can also include a byte order mark (BOM) (**New!**).

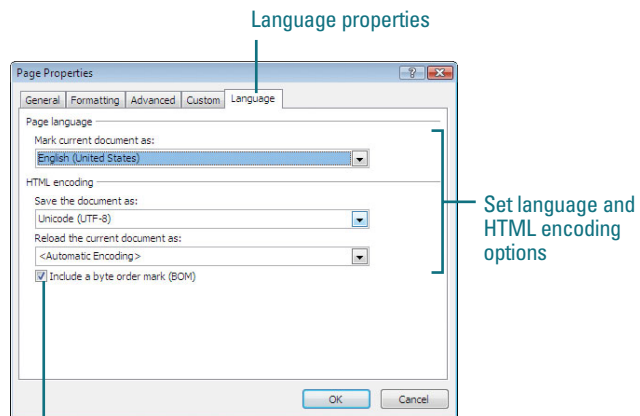
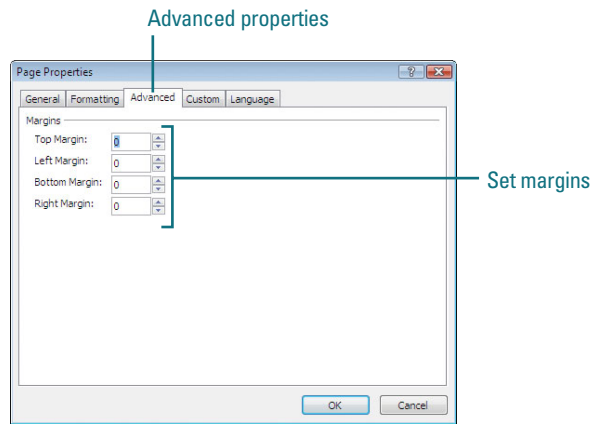
5 Click **OK**.

### Did You Know?

**What is a Unicode?** A character coding standard that defines a set of letters, numbers, and symbols that represent almost all of the written languages in the world.

### See Also

See "Adding and Removing Byte Order Marks" on page 366 for information on byte order marks (BOM).



Select to include a byte order mark (BOM)

☒ Include a byte order mark (BOM)



# Inserting Background Pictures and Watermarks

## Insert a Background Picture

- 1 Open and display the Web page you want to use.
- 2 Right-click anywhere on the page to which you want to insert a background picture, and then click **Page Properties**.
- 3 Click the **Formatting** tab.
- 4 Select the **Background Picture** check box.

**TROUBLE?** If the option is grayed out, you need to open the master page.

- 5 Click **Browse**.
- 6 Locate and select the picture you want to insert, and then click **Open**.

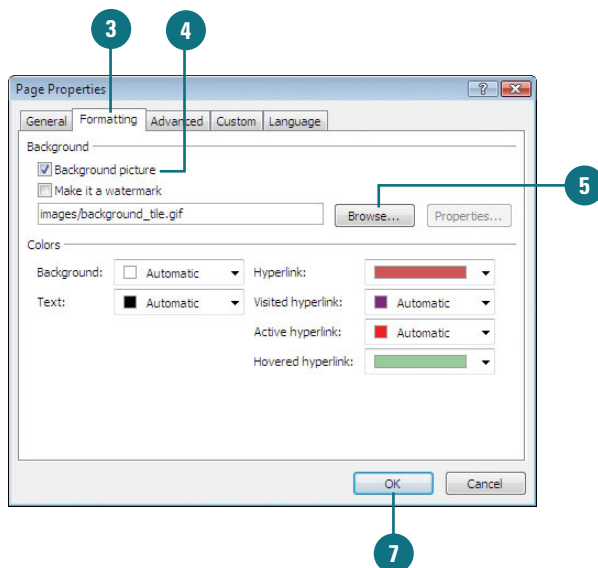
The picture you selected now opens as a background image.

- 7 Click **OK**.

### Did You Know?

**You can avoid picture background tiling.** Make your picture wider than any typical computer screen. You can use a solid background color or make it transparent to achieve the look you want.

You can use a picture as the background for a page. Pictures can be taken from elsewhere on your site, a file, clip art, or the Web. You can also use a background picture in watermark form. A watermark is a background effect that displays a graphic in a light shade behind your text on your page. You can use a washed out version of your company logo, or you can add graphical text such as Under Construction. Pictures and watermarks display in the background titled across the page. Be aware that not all Web browsers support watermarks.



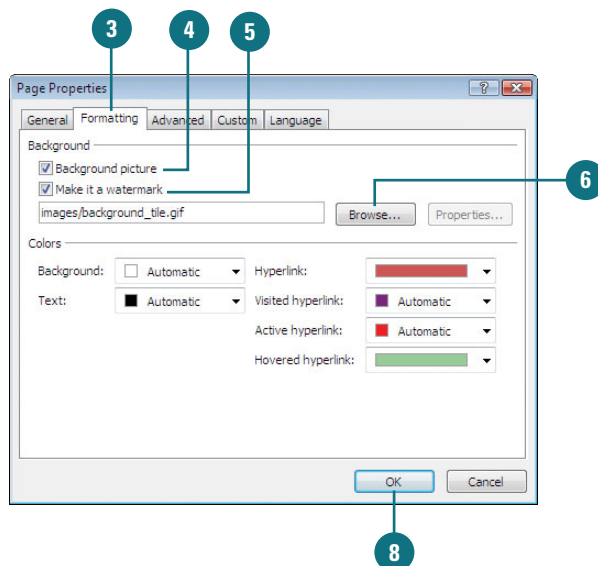


## Insert a Background Picture Watermark

- 1 Open and display the Web page you want to use.
- 2 Right-click anywhere on the page to which you want to insert a background picture, and then click **Page Properties**.
- 3 Click the **Formatting** tab.
- 4 Select the **Background Picture** check box.
- 5 Select the **Make it a watermark** check box.
- 6 Click **Browse**.
- 7 Locate and select the picture you want to insert, and then click **Open**.

The picture you selected now opens as a background image.

- 8 Click **OK**.



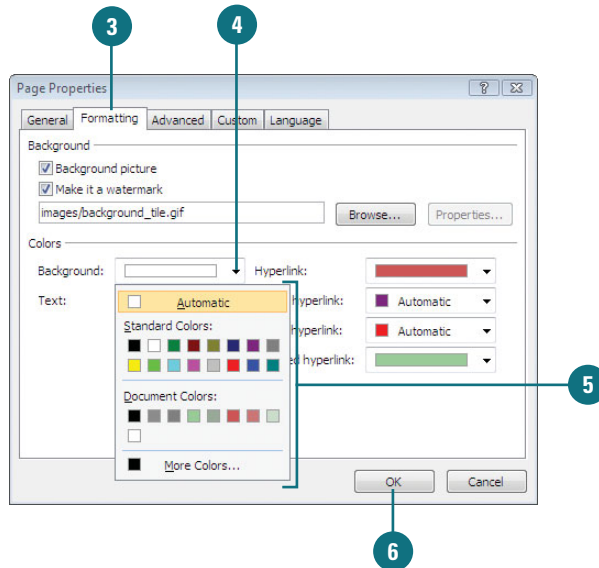


# Changing Background Colors

## Change the Background Color of a Web Page

- 1 Open and display the Web page you want to use.
- 2 Right-click the page to which you want to change a background color, and then click **Page Properties**.
- 3 Click the **Formatting** tab.
- 4 Click the **Background** list arrow.
- 5 Click the color you want on the color palette.
- 6 Click **OK**.

If you'd like to add some interest to your pages, you can add background colors. When selecting background colors, some creative judgment is required. For example, if you choose a dark color for your background, make sure you use a light color for your text (the most commonly used is white) to generate the appropriate contrast required for easy reading.





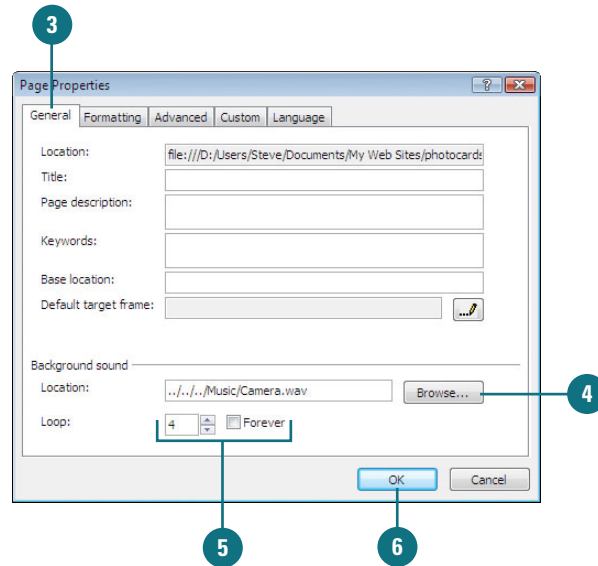
# Adding Background Sound

## Add a Background Sound to a Web Page

- 1 Open and display the Web page you want to use.
- 2 Right-click the page to which you want to add a background sound, and then click **Page Properties**.
- 3 If necessary, click the **General** tab.
- 4 Type the sound file name or click **Browse**, locate and select the sound file you want to use, and then click **Open**.
- 5 To set the sound to repeat continuously, clear the **Forever** check box, and then click the number arrows in the Loop box to set the number of times you want the sound to play.
- 6 Click **OK**.

Whenever a visitor opens the page, they will hear the sound effect you chose.

You can introduce background sounds to accompany and enhance your Web page. There's nothing like hearing a favorite tune when you enter a site or visit a particular page. The sound can be played continuously in a loop, or you can set it for a desired number of plays. Be aware that not all browsers support background sound.





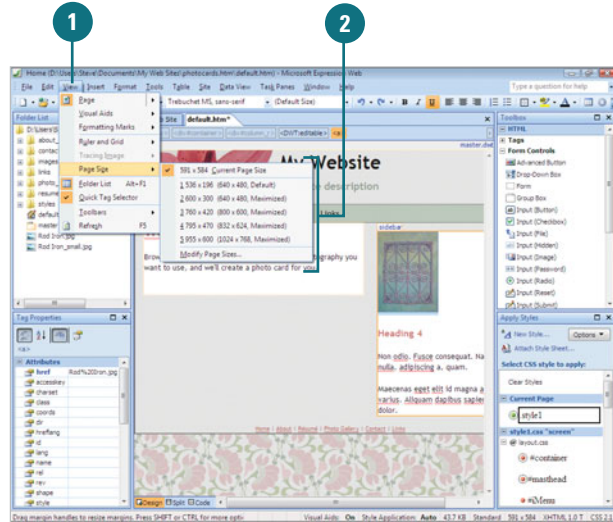
# Setting Page Size

## Change the Page Size View

- 1 Click the **View** menu, and then point to **Page Size**.
- 2 Click the page size you want.

**TIMESAVER** Click the current page size on the status bar, and then click a new size.

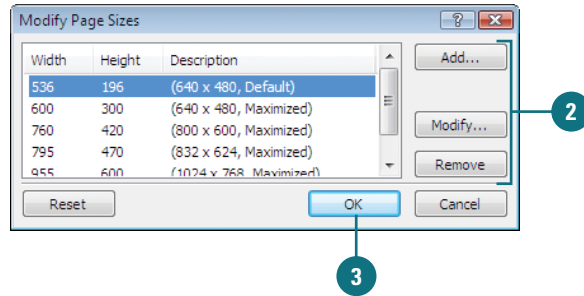
Since visitors to your Web site can use different screen resolutions or window sizes, you need to develop Web pages so a variety of users can view it without having to zoom in or scroll too much. You can use the Page Size command to simulate different page size to see how your pages look. The page sizes available using the Page Size command correspond to standard screen resolutions, which include 640 x 480, 800 x 600 and 1024 x 768 (all maximized).





## Change the Page Size

- 1 Click the **View** menu, point to **Page Size**, and then click **Modify Page Sizes**.
- 2 Perform the page size commands you want:
  - ◆ **Add**. Click **Add**, enter width, height and a description, and then click **OK**.
  - ◆ **Modify**. Select a page size, click **Modify**, make changes, and then click **OK**.
  - ◆ **Remove**. Select a page size, and then click **Remove**.
  - ◆ **Reset**. Click **Reset** to return to default page sizes.
- 3 Click **OK**.



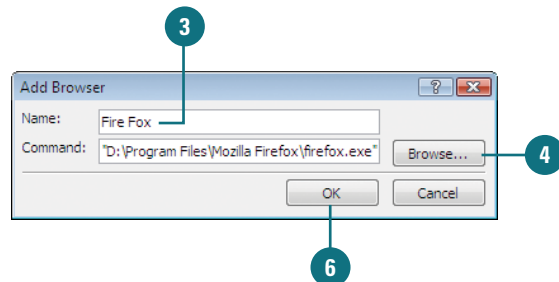
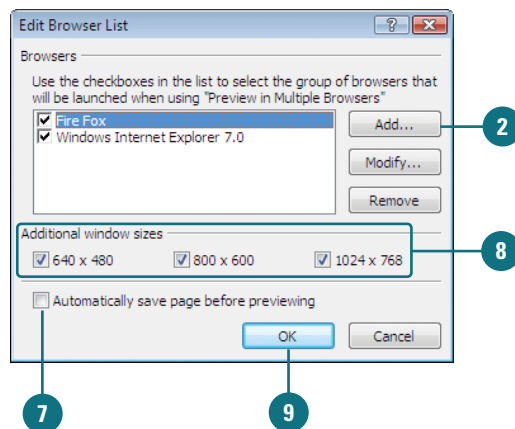


# Previewing Web Pages

## Add Browsers to the Preview

- 1 Click the **File** menu, point to **Preview in Browser**, and then click **Edit Browser List**.
- 2 Click **Add**.  
The Add Browser dialog box opens.
- 3 Type the browser's name.
- 4 Click **Browse**.
- 5 Navigate to the location where the browser program is stored, select it, and then click **Open**.
- 6 Click **OK**.
- 7 To automatically save a Web page before previewing, select the **Automatically save page before previewing** check box.
- 8 To specify the window sizes you want, select the **640 x 480**, **800 x 600**, or **1024 x 768** check boxes.
- 9 Click **OK**.

Because each browser can display your site differently, you will want to examine your site using several of the most popular browser formats and different sizes. When you are ready to see how your page will look to visitors, click the Preview in Browser button arrow on the Common toolbar and then select a browser and a window size. When you select a browser, the program starts and displays your Web page as you would see it on the Web. If you want to add additional browsers to the list, you can select them using the Edit Browser List dialog box. You can also simulate the page size of a browser as you work in Design view by selecting different page sizes on the Page Sizes submenu on the View menu.





## Preview a Web Page Using a Browser

- 1 Open the Web page you want to preview.
- 2 Click the **Preview in Browser** button arrow.
- 3 Click the browser with the specific size you want to use to preview your site or page.

**TIMESAVER** Press F12 to preview the Web page in the most recently used browser and size.

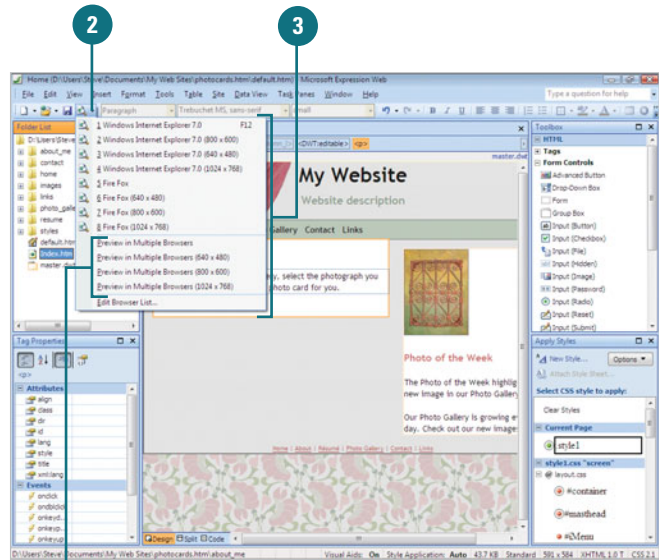
### Did You Know?

**You need to install other browsers before you can preview your pages.**

You must have previously installed the full version of other browsers like Netscape Navigator or Fire Fox if you want to preview how your pages will appear to users of those browsers.

**You need to save your pages before you can preview them.** To be sure that you have saved the page you want to preview, click the Automatically save page before previewing check box to select it in the Edit Browser List dialog box. Click the File menu, point to Preview in Browser, and then click Edit Browser List.

**You can change the Web page size in Design view.** Click the View menu, point to Page Size, and then select the size you want. If the Design view window is wider than the width you specify, gray areas appear on either side. If Design view is narrower than the width you specify, you'll need to scroll the Design view window right or left. A dotted line across the page indicates the bottom of the browser window.



Click to preview selected page in multiple browsers

Preview in Internet Explorer



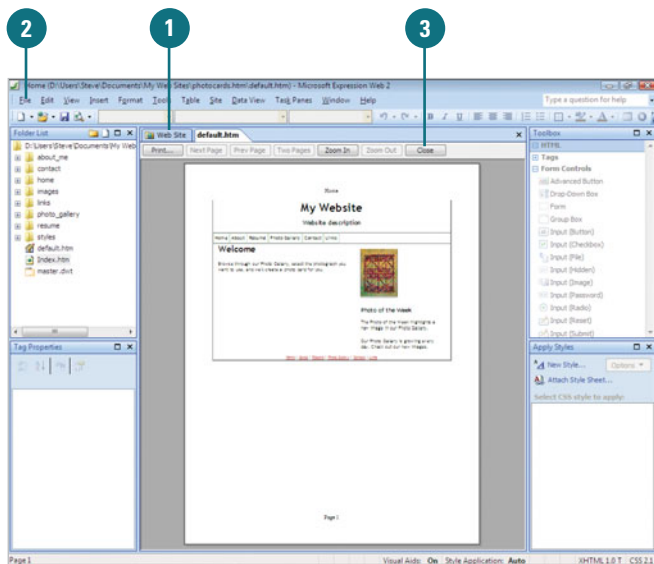


# Previewing and Printing Web Pages

## Print Preview Web Pages

- 1 Open and display the Web page you want to preview.
- 2 Click the **File** menu, point to **Print**, and then click **Print Preview**. This opens a scaled-down image of the page you want to print and a series of buttons. The button choices are:
  - ◆ **Print button.** Engages the printing process. The preview closes and the Print dialog box opens.
  - ◆ **Next Page button.** Displays the next page in the sequence for multiple-page printing.
  - ◆ **Previous Page button.** Takes you to the previous page in a sequence.
  - ◆ **Two Page button.** Toggles between a single-page and a two-page spread in Preview mode.
  - ◆ **Zoom In button.** Magnifies the preview image.
  - ◆ **Zoom Out button.** Reduces the size of the characters to show more of the page preview.
  - ◆ **Close button.** Closes the Preview mode.
- 3 When you're done, click the **Close** button.

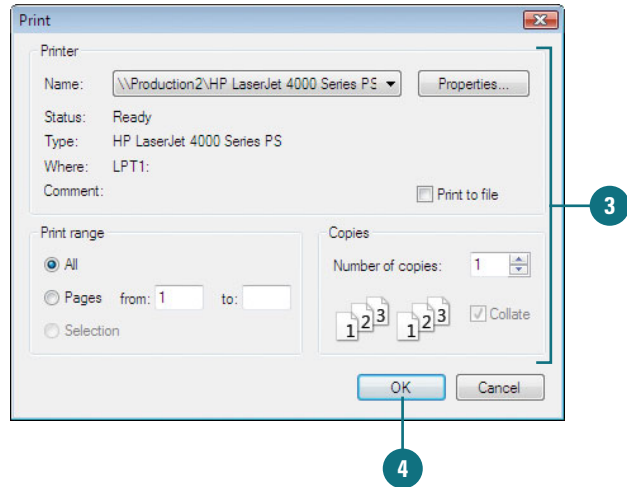
Printed pages are helpful when you are working in Preview view. Rather than toggling between a page in progress and a Browser Preview of that page, for example, you can print the Preview so that you have it in hard copy format. Printouts are also helpful when editing your pages. Before printing, you can preview the page to determine that there are no obvious errors.





## Print Web Pages

- 1 Open and display the Web page you want to print.
- 2 Click the **File** menu, point to **Print**, and then click **Print**.
- 3 Select the print options you want.
- 4 Click **OK**.



### For Your Information

#### Setting Up the Print Page Format

When you print a Web page, you can use the Print Page Setup dialog box to control the printing of text and graphics on a page. To open the Print Page Setup dialog box, click the File menu, point to Print, and then click Page Setup. The Print Page Setup dialog box allows you to specify page margins and header and footer information. In the Headers and Footers text boxes, you can type text to appear as a header and footer of a Web page you print. In these text boxes, you can also use variables to substitute information about the current page, and you can combine text and codes. For example, if you type **Page &p of &P** in the Header text box, the current page number and the total number of pages print at the top of each printed page. Check Expression Web and Internet Explorer Help for a complete list of header and footer codes.

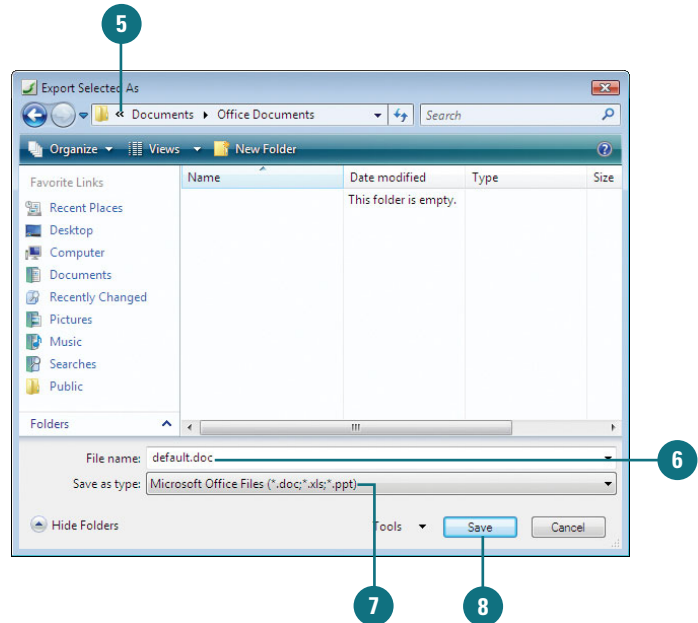


# Exporting Web Content

## Export Web Content

- 1 Open the Web site with the Web page you want to change.
- 2 If necessary, click the **View** menu, and then click **Folder List** to display the Folder List.
- 3 In the Folder List, select the file you want to export.
- 4 Click the **File** menu, point to **Export**, and then click **File**.
- 5 Navigate to the drive and folder location where you want to export the Web content.
- 6 Type a name for the page, or use the suggested name.
- 7 Click the **Save as type** list arrow, and then click the file type you want.
  - ◆ **HTML (.htm, .html)**
  - ◆ **GIF and JPEG (.gif, .jpg)**
  - ◆ **Microsoft Office Files (.doc, .xls, .ppt)**
- 8 Click **Save**.

When you export Web content, you save the information in a new format so that it can be opened in an entirely different program. You can export one or more files from Expression Web to a location outside your Web using the Export command or Copy and Paste commands. This process can be executed using the Folder List or Folders view.

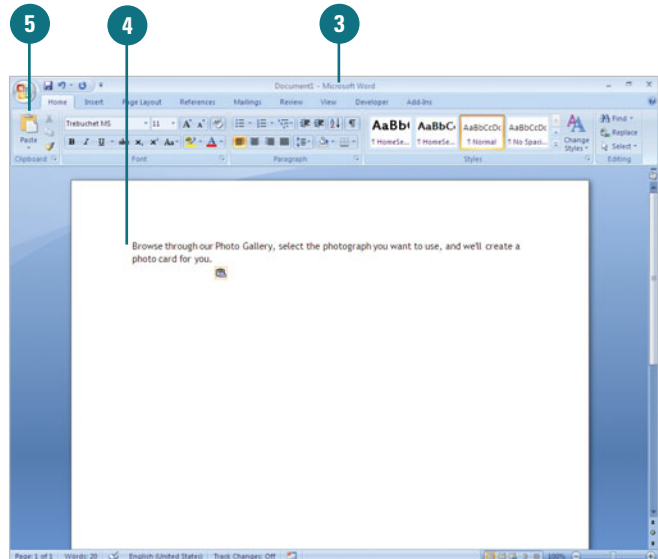
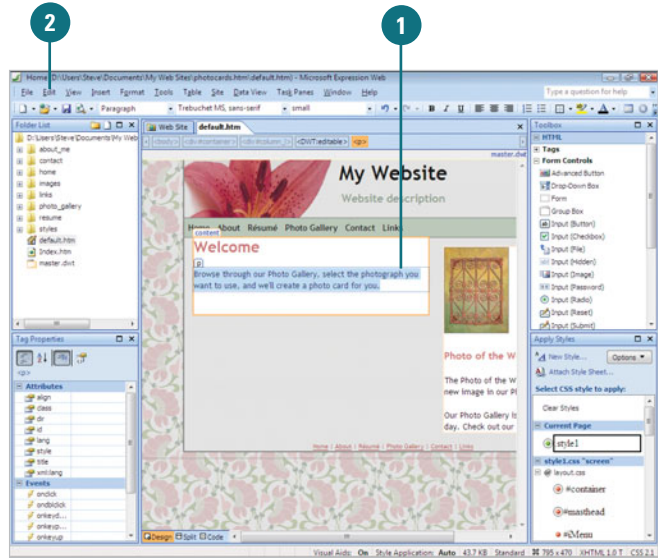




## Export Web Content Using Copy and Paste

- 1 Select the information you want to copy.
- 2 Click the **Edit** menu, and then click **Copy**.
- 3 Display the location in which you want to move the content.
- 4 Click the area where you want to place the content.
- 5 Click the **Paste** button on the toolbar.

The source files or folders are copied into their new location.





# Creating a Page Template

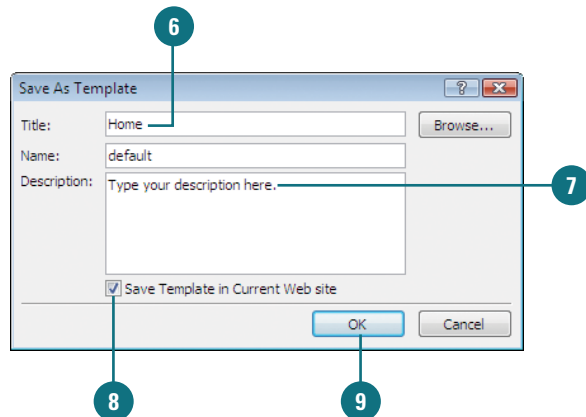
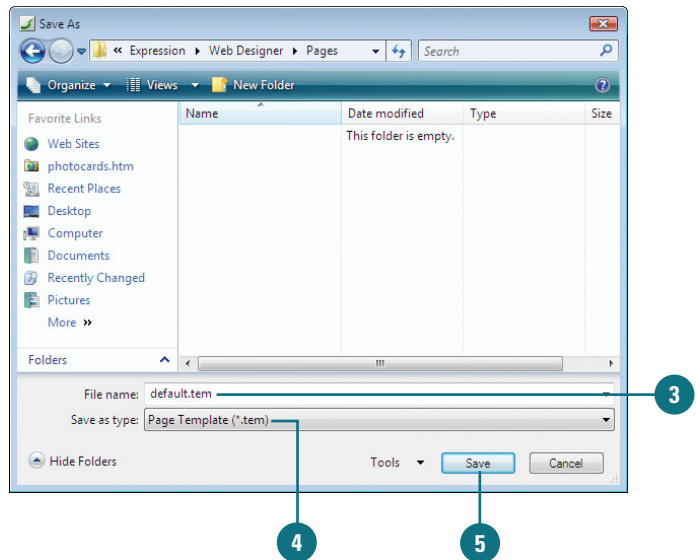
## Create a Static Template

- 1 Design and display the Web page you want to create into a static template.
- 2 Click the **File** menu, and then click **Save As**.
- 3 Type a name for the template.
- 4 Click the **Save as type** list arrow, and then click **Page Template**.

The folder location changes to the Pages folder, where Expression Web stores page templates.

- 5 Click **Save**.
- 6 Type the title you want for the template.
- 7 Type a description for the template.
- 8 To save the template in the current Web site, select the **Save Template in Current Web site** check box.
- 9 Click **OK**.

Instead of using one of the built-in page templates that comes with Expression Web, you can create your own. There are two kinds of page templates: static and dynamic. A **static template** is a Web page you create and design, which is completely editable. After you save a static page template, you can access it in the My Templates tab of the Page Templates dialog box. A **dynamic template** is a Web page with editable areas like a static template, yet also contains non-editable areas with content that changes based on circumstances, such as actions taken by a user or the date.



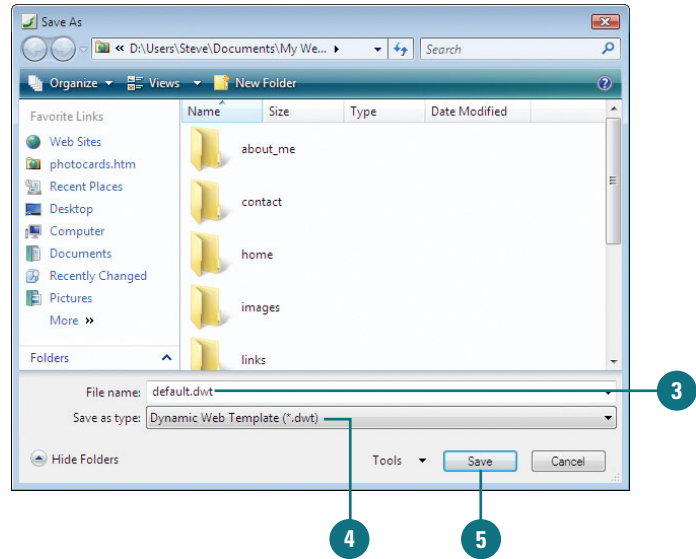


## Create a Dynamic Template

- 1 Design and display the Web page you want to create into a dynamic template. Be sure to leave areas open to create editable regions.
- 2 Click the **File** menu, and then click **Save As**.
- 3 Type a name for the template.
- 4 Click the **Save as type** list arrow, and then click **Dynamic Web Template**.

The folder location changes to the Pages folder, where Expression Web stores page templates.

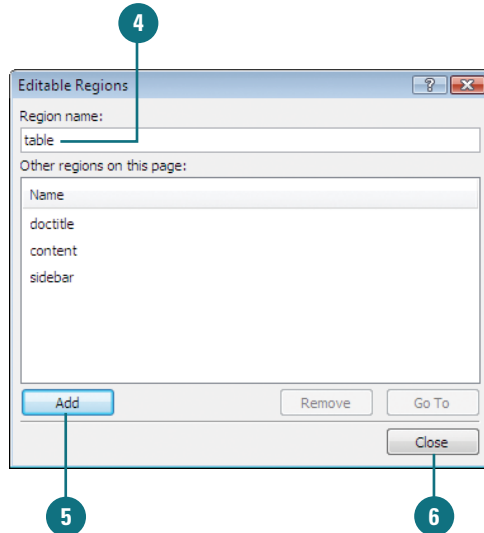
- 5 Click **Save**.



## Create Editable Regions for a Dynamic Template

- 1 Display the Dynamic Web Template you want to change.
- 2 Select the page area you want to vary from page to page.
- 3 Click the **Format** menu, point to **Dynamic Web Template**, and then click **Manage Editable Regions**.
- 4 Type a name for the area you selected.
- 5 Click **Add**.
- 6 Click **Close**.

You can repeat Steps 2 through 6 to designate other dynamic areas.





# Using a Dynamic Page Template

## Attach a Dynamic Web Template

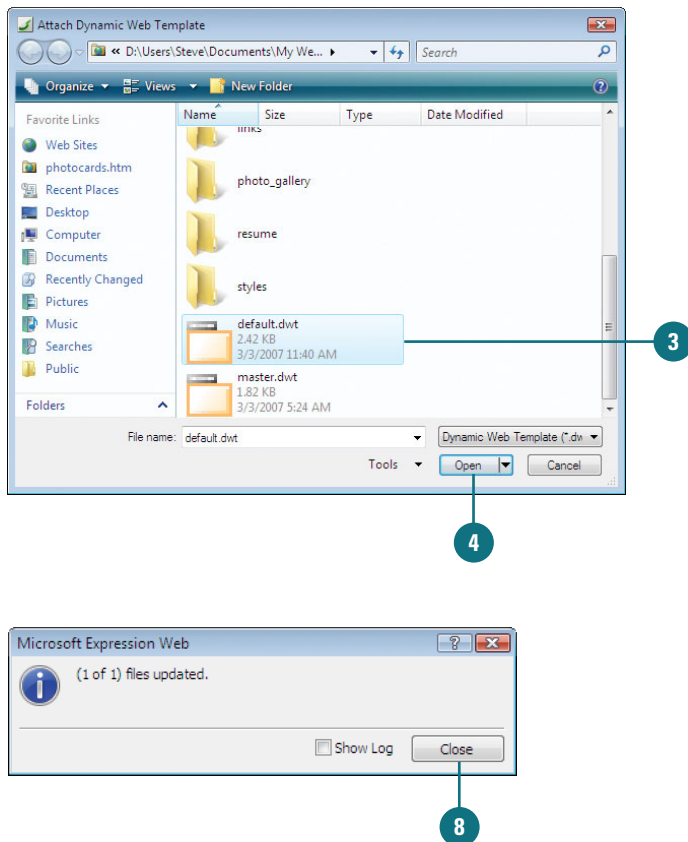
- 1 Display the Web page in which you want to apply a dynamic page template.
- 2 Click the **Format** menu, point to **Dynamic Web Template**, and then click **Attach Dynamic Web Template**.
- 3 Locate and select the dynamic Web template you want to apply.
- 4 Click **Open**.
- 5 Select which regions in the new page will receive content/regions from the old page.
- 6 Click **Modify**, select a new mapping, and then click **OK**.
- 7 Click **OK** to attach the template.
- 8 Click **Close**.

### Did You Know?

#### *You can manage editable regions.*

Click the **Format** menu, point to **Dynamic Web Template**, and then click **Manage Editable Regions**.

After you create a dynamic Web template, you can apply, or attach, the template to an open Web page. When you attach a dynamic Web template to a Web page, Expression Web tries to map regions on the ordinary Web page to editable regions in the template. If you don't like the initial mapping, you can modify or skip it. After you attach a dynamic Web template to an ordinary Web page, you can modify non-editable regions in Code view, or any editor other than Design view to create updatable content.





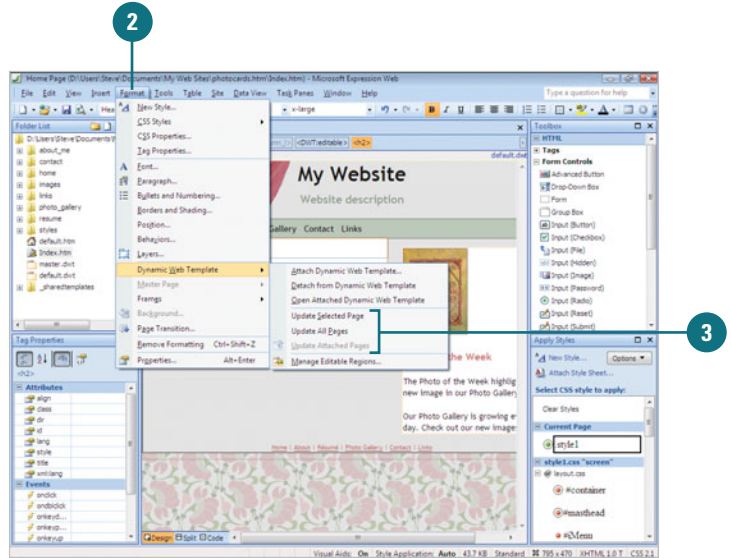
## Update a Dynamic Web Template

- 1 Open the dynamic Web page template, and then make the changes you want to update on other pages.
- 2 Click the **Format** menu, and then point to **Dynamic Web Template**.
- 3 Click the update command you want.

- ◆ **Update Selected Page**
- ◆ **Update All Pages**
- ◆ **Update Attached Pages**

### Did You Know?

**You can detach a Dynamic Web Template from a Web page.** Open and display the Web page with the Dynamic Web Template attached, click the Format menu, point to Dynamic Web Template, and then click Detach from Dynamic Web Template. If you want to open an attached Dynamic Web Template page, click Open Attached Dynamic Web Template on the submenu.





# Creating a Master and Content Page

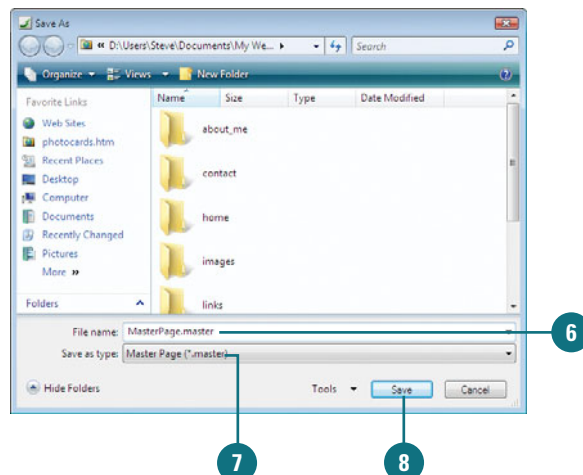
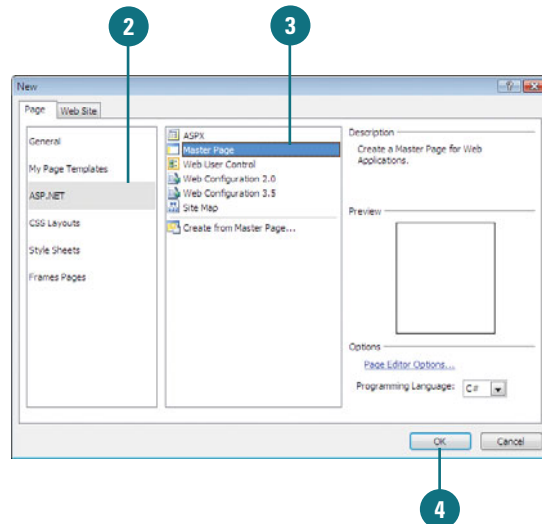
## Create a Master Web Page

- 1 Click the **File** menu, point to **New**, and then click **Page**.
  - 2 In the left pane, click **General** or **ASP.NET**.
  - 3 Click **Master Page**.
  - 4 Click **OK**.
- An Untitled\_1.master page appears in the Editing window.
- 5 Click the **File** menu, and then click **Save As**.
  - 6 Type a name for the master page.
  - 7 Click the **Save as type** list arrow, and then click **Master Page**.
  - 8 Click **Save**.

### Did You Know?

**You can manage content regions.** Click the Format menu, point to Master Pages, and then click Manage Content Regions.

A Master page is a special type of ASP.NET page that allows you to share contents, such as graphics, HTML code, and ASP.NET controls, between pages. Master pages are similar to Dynamic Web Templates because they share elements between pages. However, Master pages add the ability to share code. If you have ASP.NET 2.0 available on your Web server, you can take advantage of Master pages. A Master page uses content controls instead of editable regions in a Dynamic Web Template. The content control on the Master page (*ContentPlaceHolder*) maps to the content control on the Content page (*Content*). After you create a Master page using a template in the New dialog box, you need to save it with the .master file extension. Now, you can create a Content page and link it to a Master page.





## Create a Content Web Page

- 1 Click the **File** menu, point to **New**, and then click **Page**.
- 2 In the left pane, click **General** or **ASP.NET**.
- 3 Click **Create from Master Page**.
- 4 Click **OK**.
- 5 Click the **Specific Master Page** option.
- 6 Click **Browse**, locate and select the master page, and then click **Open**.
- 7 Click **OK**.

An Untitled\_1.aspx content page appears in the Editing window.

The Content page pulls in the content from the Master page in the ControlPlaceHolder control.

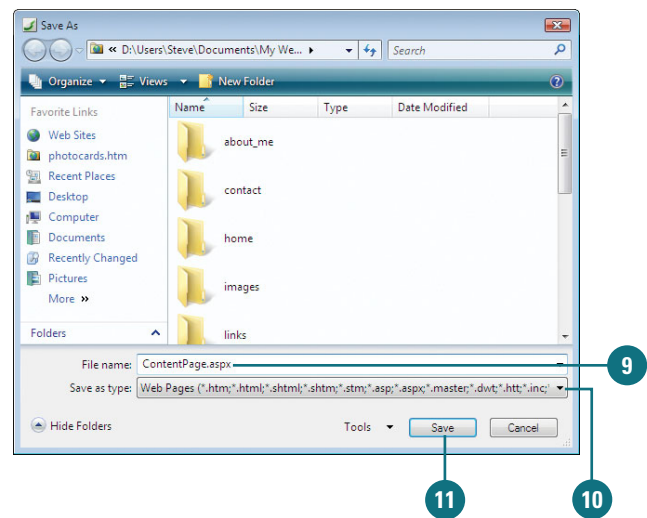
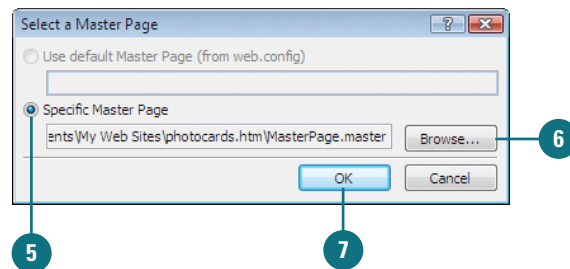
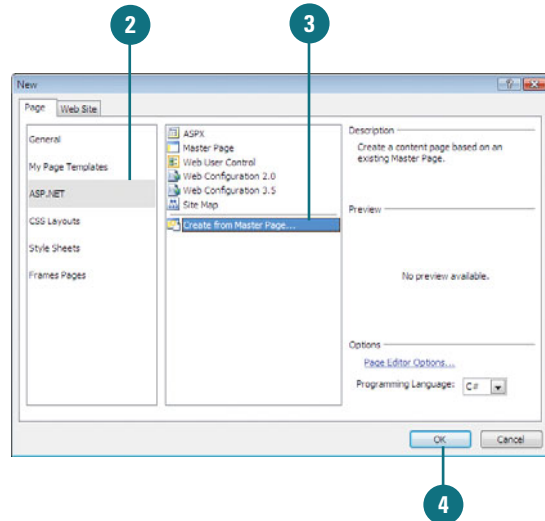
- 8 Click the **File** menu, and then click **Save As**.
- 9 Type a name for the content page.
- 10 Click the **Save as type** list arrow, and then click **Web Pages**.

This saves the content page with the .aspx extension.

- 11 Click **Save**.

### Did You Know?

**You can detach a Master page.** Open and display the Content page, click the **Format** menu, point to **Master Pages**, and then click **Detach from Master Page**. If you want to open an attached Master page, click **Open Attached Master Page** on the submenu.





# Saving a Web Page with Different Formats

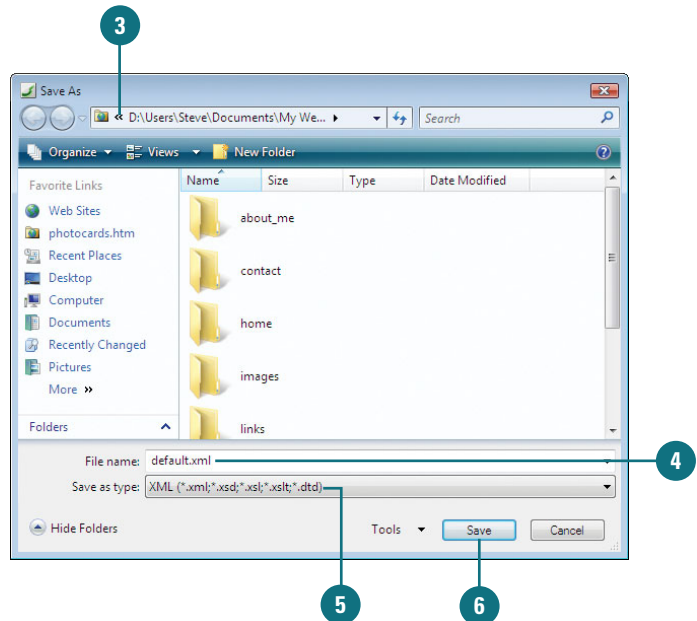
## Save a Web Page as a Different Type

- 1 Open and display the Web page you want to save in a different format.
- 2 Click the **File** menu, and then click **Save As**.
- 3 Navigate to the drive and folder location where you want to save the Web page.
- 4 Type a name for the page, or use the suggested name.
- 5 Click the **Save as type** list arrow, and then click the file type you want.
- 6 Click **Save**.

### See Also

See “Expression Web Formats” on page 75 for information on selecting the right file format.

A file type specifies the file format (for example, a template) as well as the program and version in which the file was created (for example, Expression Web). You might want to change the type if you’re creating a custom template or sharing files with someone who needs them for use in another program. You use the Save As dialog box to change the file type for a page. The Save as type list arrow displays a list of the available formats for the program or current selection.



## For Your Information

### Saving Web Related Files

When you use Web related-files, typically scripts, created in other programs, make changes, and save the Web page or Web site, Expression Web saves the other Web related-files in their native file format. Some of the native file formats include ColdFusion Markup Language (.cfm), PHP Script (.php, .php2, .php3, .php4), HTML File with Server Side (.shtm, .shtml, .shm), State Transition Diagram model file (.stm), Hypertext template (.htt), Hypertext application (.hta), HTML Component (.htc), Ascii text file (.asc), and Microsoft .NET Web Service file (.asmx). The files listed in the Save File Formats table on the next page are included in this list too.



# Expression Web Formats

## Expression Web Save File Formats

Save As file type	Extension	Used to save
All Files	*.*	Complete Web site
Web Pages		Files in their native format; includes the formats in this list and the ones in the side bar on the previous page
HTML Files	.htm, .html	Web pages as a HTML file
Dynamic Web Template	.dwt	Web pages as a changeable Expression Web template
ASP and ASPX Files	.asp, .aspx	Web pages as a Microsoft Active Server Page
Master Page	.master	Web pages as Expression Web master page file; a special type of ASP.NET file
JScript Files	.js	Scripts as a Microsoft Scripting Language "JScript" file
VBScript Files	.vba	Scripts as a Visual Basic for Applications file
PHP Files <b>(New!)</b>	.php	Web pages as a PHP file
CSS Files	.css	Web pages as a cascading style sheet
XML	.xml, .xsd, .xsl, .xslt, .dtd	Web pages as an XML file
Text	.txt	Web pages as a text file
Page Template	.tem	Web pages as a static Expression Web template

## Expression Web Open File Formats

Files of type	Extension	Used to open
<i>All files in the above table are included in this list</i>		<i>All files from the above list</i>
Recover Text from Any file	*.*	Text files not supported (from this list below)
WordPerfect 5.x	.doc	WordPerfect 5.0 files
WordPerfect 6.0	.wpd, .doc	WordPerfect 6.0 files
Word 2007 Document	.docx	Word 2007 documents
Word 2007 Macro-Enabled Document	.docx	Word 2007 documents that contains Visual Basic for Applications (VBA) code
Word 97 - 2003 Document	.doc	Word 97 to Word 2003 documents
Works 6.0 - 9.0	.wps	Works 6.0-9.0 files

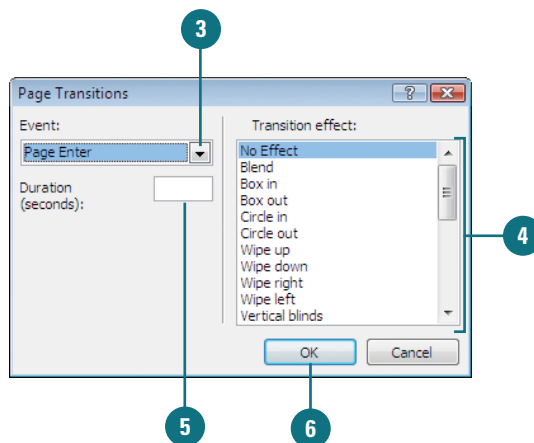


# Animating Page Transitions

## Apply a Page Transition

- 1 Open and display the Web page you want to use.
- 2 Click the **Format** menu, and then click **Page Transition**.
- 3 Click the **Event** list arrow, and then click an event type: **Page Enter**, **Page Exit**, **Site Enter**, or **Site Exit**.
- 4 Click the transition effect you want.
- 5 Set the duration (in seconds) of the transition effect.
- 6 Click **OK**.

You can use animation in your Web site to provide interest and call attention to important information. When you move from one Web page to another, you can display a transition effect between the two pages. You can select a transition effect, and then specify when the page transition occurs, and how long it lasts. The only disadvantage of page transitions is that the browser must wait for the entire Web page to load before it can apply the transition effect. Be aware that animated page transitions are not supported by all browsers.





# Index

## A

- About Microsoft Expression Web, 20
- absolute positioning, 305
  - options, 134
- accelerator keys to menu, assigning, 368
- accessibility information
  - Accessibility Properties dialog box, 27
  - checking Web pages for, 341
  - prompts for, 360
- Accessibility Properties dialog box, 27
- actions in behaviors, 194
- ActiveX controls
  - running, 165
  - previewing media, 166-167
  - setting security options, 164
- add-ins, loading/unloading, 383
- Adobe
  - Acrobat files, hyperlinks to, 175
  - Flash
    - checking for, 204
    - inserting movies, 154-155
    - playing movies, 166-167
    - setting properties, 156-157
  - Shockwave, checking for, 204
- advanced buttons in forms, 261, 270-271
- AIFF sounds, playing, 210
- alignment. *See also* tables
  - of graphics, 138-139
  - for inline frames, 249
  - of interactive buttons, 190
  - of layout tables, 213
  - line alignment, changing, 91
  - of text, 88
- animating page transitions, 76
- antonyms, finding, 113
- Apple QuickTime (MOV)
  - ActiveX controls, setting security options, 164
  - checking for, 204
  - installing for, in Expression Media, 390
  - overview, 153
  - previewing, 166-167
- Apple Safari
  - work with Silverlight, 162
- Application Options dialog box, 359
- Apply Styles task pane, 8, 287, 295
- artboard
  - in Expression Design, 387
  - in Expression Blend, 396
- ASP (Active Server Pages), 217. *See also* ASP.NET
  - database, saving form results to, 280
  - as form handler, 278
- ASP.NET. *See also* Master page
  - overview, 313, 314
  - controls, 315-319
    - AJAX, 315, 318
    - custom, 319
  - creating Web pages in, 314
  - customizing options, 359
  - hyperlink parameters, adding, 173
  - login, adding, 315
  - options, customizing, 359
  - preview pages, with Expression Development Server, 352-353
  - saving Web pages in, 75
  - validation, for forms, 315
  - WebParts, adding, 315
- ASPX format, 37
  - saving Web pages in, 75
- attachments
  - dynamic templates, attaching, 70
  - Master page, attaching, 72
- attributes of HTML tags, 286, 292
- audio. *See* sounds
- Auto Thumbnail button, 130-131



AutoFit To Contents command, 227  
AutoFormat for tables, 237  
Auto Indent, 361  
Auto-Scale of cells, 213  
autostretching layout tables, 216

## B

backgrounds. *See also* tables  
    changing colors, 58  
    deleting images, 54  
    inserting images, 54, 56  
    for interactive buttons, 191  
    sounds, inserting, 54, 59  
Backspace key, 80  
Banner and Contents template, 243-244  
base location, specifying, 54  
behaviors, 189  
    Call Script behavior, 209  
    Change Property behavior, 206-207  
    Check Browser behavior, 204  
    deleting, 196  
    elements, adding to, 195  
    Go To URL behavior, 197  
    Jump Menu behavior, 198-199  
    modifying, 196  
    Open Browser behavior, 208  
    order of behavior, changing, 195  
    paragraph, adding to text in, 195  
    Play Sound behavior, 210  
    Popup Message behavior, 200  
    Preload Images behavior, 202  
    SetText behavior, 200  
    Swap Images behavior, 202-203  
    viewing, 194  
Behaviors task pane, 189  
Besides New Window target hyperlink, 177  
bevels to graphics, adding, 144  
Blink effect, 100  
BMP files, 118  
boilerplate text, 78  
boldfacing  
    text, 98  
    updates tags for, 360  
Bookmark dialog box, 170  
bookmarks  
    creating, 170

    deleting, 170-171  
    hyperlinks, creating, 172  
    navigating to, 170-171  
borders, 241. *See also* frames pages; tables  
    Change Property behavior, 206-207  
    for inline frames, 249  
Borders and Shading dialog box, 146-147  
    padding for graphics, setting, 145  
Borders button, 146-147  
brightness of graphic, adjusting, 140  
Bring Forward/Send Backward, 135  
browsers. *See also* hyperlinks  
    colors, safe, 376  
    frames, resizing, 248  
    low resolution graphics, support for, 150-151  
    Open Browser behavior, 208  
    previewing Web pages in, 62-63  
    symbols, support for, 89  
    version, checking, 204  
    watermarks, support for, 56  
built-in styles, 95  
bulleted/numbered lists  
    adding items to, 92  
    creating, 92  
    custom bullets, inserting, 93  
    format, changing, 92  
buttons. *See also* interactive buttons; tool-bars  
    forms, inserting in, 270-271  
    Menu bar, assigning to, 368  
Byte Order Mark (BOM)  
    adding/removing, 366-367

## C

Call Script behavior, 209  
camera, inserting graphics from, 124  
Capitalize effect, 100  
captions. *See* tables  
catalog  
    in Expression Media, 390  
Cell Properties dialog box, 234-235, 240  
cells. *See* layout tables; tables  
centering  
    table cell contents, 231  
    text, 88



- CGI script as form handler, 278
- Change Property behavior, 206-207
- Change Property Restore behavior, 206-207
- characters
  - spacing, changing, 86
  - special characters, inserting, 89
- check boxes in forms, 261, 269
- Check Browser behavior, 204
- Check for Updates command, 20
- Check Plug-In behavior, 204-205
- check-in/check-out, documents
  - removed from product, 403
- Citation effect, 100
- class-based styles, 298
  - creating, 299
- clearing properties, 305
- clip art, inserting, 148
- Clipboard for moving/copying text, 84-85
- closing
  - task panes, 9
  - Web pages, 21
- code. *See also* code snippets; HTML (Hypertext Markup Language)
  - finding/replacing, 102-103
  - fixed-width fonts for, 114
  - formatting options, 362-363
- Code effect, 100
- code snippets, 286
  - changing options, 364
  - editing, 55
  - List Code Snippets command, 296
  - reusing, 364
- Code view, 4, 14-15, 16
  - dynamic template regions, editing, 70
  - for HTML code, 44-45, 286
- colors. *See also* backgrounds; fonts; graphics; tables
  - browser safe colors, 376
  - custom colors, creating, 376-377
  - defining custom palette, 376
  - deleting custom colors, 377
  - hyperlink colors, changing, 178-179
  - for interactive buttons, 190-191
  - line color, changing, 91
  - more colors, adding, 101
  - of table borders, 233
- color scheme
  - changing, user interface, 5, 356

- columns and rows. *See also* tables
  - frames into columns or rows, splitting, 255
- COM (Component Object Model)
  - add-ins, 383
- commands. *See also* toolbars
  - in Help Menu, 20
  - Menu bar, assigning to, 368-369
- Common toolbar, 6
- community information, 20
- compatibility
  - checking Web page compatibility, 342-343
  - highlighting incompatible HTML, 361
  - viewing the Compatibility Task Pane, 343
- Compatibility Task Pane, 342-343
- Complete Word command, 296
- CompuServe's Graphics Interchange, 118
- confirmation page, custom, 275
- contact information forms, 257
- Contact Us information, 20
- containers
  - paragraph containers, 82
  - text containers, 78
- Content page, creating, 72-73
- Contents template, 243-244
- contrast of graphic, adjusting, 140
- conventional tables. *See* tables
- copying
  - exporting Web content by, 67
  - files, 12
  - graphics from Web, 125
  - interactive buttons, 192
  - reports, 338-339
  - styles, 301
  - template pages for new Web page, 29
  - text, 84-85
  - toolbar button image, 374
  - in Web page, 11
- Crop button, 132
- cropping graphics, 132
- CSS (Cascading Style Sheets), 24, 77, 285, 287. *See also* external style sheets; IntelliSense
  - adding pages to Web site with, 37
  - Code Formatting options, 362-363
  - embedded CSS, creating, 95
  - error-checking, 310-311



## CSS *(continued)*

- ID styles for layout, creating, 308-309
  - layouts, 287, 306
    - scratch, creating from page from, 308-309
    - template, creating page from, 306-307
  - moving internal styles to external style sheets, 303
  - options, setting, 312
  - overflow property, 292
  - pages, creating, 306
  - saving CSS files, 75
  - tools, 287, 295
  - usage problems, checking for, 310-311
- CSS Properties task pane, 287, 295
- CSS Reports, 310-311
- Custom Dictionaries dialog box, 108
- Customize dialog box
  - special operating mode, 371
  - toolbars, showing/hiding, 370
- customizing, 355. *See also* macros
- ASP options, 359
  - bullets, 93
  - confirmation pages, 275
  - frames page template, 244
  - FTP transfer options, 359
  - general options, 356
  - Menu bar, 368-369
  - Reports view, 358
  - toolbars, 372-373

## D

- data formatting. *See* formatting
- data view. *See* XML
- databases
  - form results to database, saving, 280-281
  - updating, 281
  - Web sites, configuring connections for, 352-353
- debugging macros, 378-379, 382
- default.htm, 26
  - setting Web page as, 52
- Definition effect, 100
- definition list, creating, 96-97
- Delete key, 80
- deleting. *See also* toolbars
  - backgrounds, 54

- behaviors, 196
  - bookmarks, 170-171
  - bullets/numbers from lists, 92
  - colors, custom, 377
  - COM add-ins, 383
  - files, 12
  - forms or form fields, 259
  - frames, 254
  - hidden data for Web site, 41
  - hotspots, 184
  - layers, 136
  - macros, 381
  - properties, 207
  - spell-checking symbols, 112
  - styles, 95, 301
  - table elements, 230
  - template pages, 28
  - Web pages, 50
  - Web sites, 41
- Design mode, 4
- Design view, 14-15, 16
  - default text, changing, 114
  - formatting options, setting, 365
  - grid, working with, 304
- HTML
  - pages, displaying, 44-45
  - tags, displaying, 49
  - linked Web pages, opening, 46
  - optimizing published HTML code in, 345
  - rulers, working with, 304
  - size of Web page, changing, 63
- dialog boxes, help in, 19
- dictionaries. *See* spell-checking
- digital camera, inserting graphics from, 124
- disabled users. *See also* accessibility information
  - visually impaired persons, alternative text for, 121
- discussion form handler, creating, 279
- disk-based sites, 24-25
  - for empty Web site, 31
- Distribute Columns Evenly command, 227
- Distribute Rows Evenly command, 227
- DOC files
  - exporting Web content as, 66
  - hyperlinks to, 175
  - inserting text from, 115
- docking toolbars, 6-7



- doctype declarations, 342
- document check-in/check-out
  - removed from product, 403
- document tabs, navigating with, 48
- double-spacing text, 86-87
- downloading. *See also* updates
  - Slow Pages report, 358
- drag-and-drop
  - Customize dialog box and, 371
  - text, moving/copying, 84
- Draw Layout Cell button, 216
- drop-down boxes in forms, 261, 266
- .dwt files, 26
- dynamic templates
  - attaching, 70
  - creating, 68-69
  - detaching, 71
  - editable regions, creating, 69, 70
  - saving, 75
  - updating, 71
- Dynamic Web Template, 37

## E

- Edit Browser List dialog box, 62-63
- Edit Hyperlinks dialog box, 188
- Edit Tag command, 294
- editing
  - frames pages, 253
  - graphics, 127
  - horizontal lines, 90-91
  - hotspots, 184
  - hyperlinks, 178-179
  - interactive buttons, 192-193
  - menu entries, 374
  - styles, 301
  - target frames, 252
  - text, 80
  - toolbar buttons, 374
- Editing window, 10
- editors. *See also* Quick Tag Editor
  - configuring external editors, 357
- effects
  - bevels to graphics, adding, 144
  - font effects, adding, 100
- e-mail
  - form results, sending, 276-277
  - hyperlinks to addresses, 176
- embedded style sheets, 287
- embedding Windows media, 158-159
- Emphasis effect, 100
- empty Web site, creating, 30-31
- End Sub in macros, 379
- error-checking CSS, 310-311
- events
  - in behaviors, 194
  - in HTML code, 286
- exclusion dictionaries, 108-109
- existing Web site, opening, 32-33
- exiting Expression Web, 22
- Export Web Package dialog box, 38
- exporting. *See* importing/exporting
- Expression Blend, 1, 162, 385
  - artboard, 396
  - interactivity, adding, 400
  - project, 396
  - XAML, creating, 396
  - work in, 398-399
- Expression Design, 1, 385
  - new document, 387
  - open graphic, 387
    - format types, 387
  - overview, 386
  - work in, 388-389
- Expression Development Server
  - enabling, for PHP and ASP.NET, 352-353
- Expression Encoder, 1, 162, 385
  - encode jobs, 395
  - overview, 394
  - profiles, 395
  - work in, 394, 395
- Expression Media, 1, 385
  - catalog, 390
  - keywords, 392
  - manage files, 392-393
  - overview, 390-391
  - views, 391
- Extending Expression Web, 20
- Expression Studio, 1, 385
- external style sheets, 287
  - attaching to Web page, 302-303
  - creating, 302
- Eye icon, 136-137



## F

- feedback forms, 257
- fields. *See* forms
- File command, 115
- file formats. *See also* specific types
  - different format, saving Web page in, 74
  - supported formats, list of, 75
- files. *See* file formats; folders and files
- Fill Color button, 238
- Fill Down command, 223
- Fill Right command, 223
- Find and Replace dialog box, 102-105
- Find task pane, 102-105
- finding/replacing
  - code, 102-103
  - HTML tags, 104-105
  - query, saving search as, 105
  - text, 102-103
- Firefox, Mozilla
  - version checking, 204
  - work with Silverlight, 162
- fixed positioning, 305
- fixed-width fonts, 114
- Flash. *See* Adobe
- flipping graphics, 133
- floating properties, 305
- Folder list, 10. *See also* importing/exporting
  - graphics, inserting, 120-121
  - opening Web page with, 47
  - publishing individual files in, 349
- Folder List task pane, 8
- folders and files, 10. *See also* file formats; forms; templates;
  - copying files, 12
  - deleting files, 12
  - determining contents of, 10
  - graphics from files, inserting, 120
  - hidden files, tracking, 24
  - hyperlinks to files, creating, 174-175
  - importing Web content from, 34
  - metadata, tracking with, 24
  - moving files, 12
  - new folders, creating, 51
  - renaming
    - files, 12
    - Web folder, 40
  - text from file, inserting, 115
- Folders view, 14
  - opening Web pages in, 46
  - publishing individual files in, 349
- Font dialog box, 99
- Font menu, 375
- fonts
  - Change Property behavior, 206
  - changing, 98-99
  - colors
    - more colors, adding, 101
    - selecting, 98
  - default fonts, changing, 114
  - displaying fonts in Font menu, 375
  - effects, adding, 100
  - for interactive buttons, 190
  - for Jump Menu, 199
  - size, changing, 98-99
- Footer template, 243-244
- footers. *See* headers and footers
- Footnotes template, 243-244
- Form Controls, 258
- form handlers
  - overview, 282-283
  - saving results to, 278-279
- formatting. *See also* CSS (Cascading Style Sheets)
  - bulleted/numbered lists, 92
  - graphics formats, changing, 148-149
  - setting Design View options, 365
  - showing/hiding marks, 82
  - tables, 236-237
  - text, 98-99
  - Web page formatting, setting, 54
  - XML formatting, applying, 332-333
- forms, 257. *See also* registration forms
  - advanced buttons in forms, 261, 270-271
  - buttons, inserting, 270-271
  - check boxes in, 261, 269
  - confirmation page, custom, 275
  - creating, 258-259
  - custom form handler, results to, 278-279
  - customizing options, 360
  - database, saving results to, 280-281
  - deleting forms or fields, 259
  - discussion form handler, creating, 279
  - drop-down boxes in, 261, 266
  - e-mail, sending results as, 276-277
  - fields



- deleting, 259
- file upload fields, inserting, 273
- understanding, 261
- files
  - saving form results to, 274
  - upload fields, inserting, 273
- form handlers, saving results to, 278-279
- group boxes for, 261, 267
- labels for, 261, 253a
- list of element types, 261
- naming, 260
- picture buttons, inserting, 261, 272
- properties
  - setting, 260
  - text properties, changing, 265
- push buttons in, 270
- radio buttons in, 261, 268
- Reset buttons in, 261, 270
- saving
  - custom form handler, results to, 278-279
  - database, results to, 280-281
  - file, saving results to, 274
- Submit buttons in, 261, 270
- tab order, setting, 262
- tables, inserting, 259
- text boxes/areas, inserting, 261, 264-265
- types of, 257

Frame Properties dialog box, 248

frames, 241. *See also* frames pages; inline frames

- columns or rows, splitting into, 255
- content, adding, 246
- deleting, 254
- hidden frame borders, 256
- initial page display, 248
- inline frames, inserting, 245
- margins, setting, 248
- New Page option, 246-247
- properties, changing, 248-249
- resizeable frames, creating, 248
- resizing, 247
- scrollbars, 248
  - for inline frames, 249
  - showing/hiding, 253
- Set Initial Page option, 246
- showing/hiding
  - borders, 256

- scrollbars, 256
- size, setting, 248
- splitting, 255
- target frames, creating, 252

frames pages

- creating with templates, 243
- customizing templates, 244
- editing, 253
- reselecting, 251
- saving, 250-251
- showing/hiding borders, 256
- titles, modifying, 251
- viewing, 242

framesets, 250-251

FrontPage Extensions

- database, saving form results to, 280-281
- form handlers requiring, 278
- form results as e-mail, sending, 276-277
- form results to file, saving, 274
- as remote server, 346
- WebDAV, 34

FTP (File Transfer Protocol), 24-25

- customizing transfer options, 359
- for empty Web site, 31
- as remote server, 346

## G

GIF format, 118. *See also* graphics

- bullets, customizing, 93
- exporting Web content as, 66
- for transparent graphics, 142

Go To URL behavior, 197

grammar-checking, 112

graphics, 117-118. *See also* hotspots; thumbnails; transparent graphics

- aligning, 138-139
- bevels, adding, 144
- borders, adding, 144, 146-147
- brightness, adjusting, 140
- camera, inserting graphics from, 124
- contrast, adjusting, 140
- copying graphics from Web, 125
- cropping, 132
- defaults, changing, 119
- directly resizing, 128
- display, changing, 150-151
- files, inserting from, 120



- graphics *(continued)*
  - flipping, 133
  - Folder list, inserting from, 120-121
  - formats, changing, 148-149
  - forms, picture buttons in, 261, 272
  - Graphics Editor Program,
    - configuring, 150
  - grayscale, converting to, 142
  - hyperlinks, adding, 180-181
  - layers, working with, 136-137
  - low resolution graphics, creating,
    - 150-151
  - margins, adding, 145
  - moving, 126
  - numerically resizing, 129
  - pasting graphics from Web, 125
  - Pictures toolbar, modifying with, 127
  - Photoshop files, inserting, 122-123
  - positioning, changing, 134
  - resampling, 128-129
  - resizing, 128-129
  - restoring, 152
  - rotating, 133
  - scanner, inserting graphics from, 124
  - selecting, 126
  - shading, adding, 146-147
  - stacking order, changing, 135
  - tables, adding to, 240
  - tracing, 121
  - vertical alignment of, 138-139
  - washing out color in, 141
  - Web page save, changing format
    - during, 149
  - wrapping text around, 138
- Graphics Editor Program, configuring, 150
- grayscale, converting graphic to, 142
- Greek, setting keyboard for, 110
- grid, working with, 304
- group boxes in forms, 261, 267
- guest book forms, 257

## H

- Header template, 243-244
- headers and footers
  - Microsoft Excel data, tables created
    - from, 217

- Print Page Setup dialog box,
  - setting in, 65
- tag-based styles for, 298
- headings
  - centered text for, 88
  - creating, 96
- Hebrew, setting keyboard for, 110
- height. *See also* tables
  - layout tables, 213, 216
  - of lines, 91
- help
  - dialog box, help in, 19
  - Help Viewer, 18-19
  - searching for, 19
- Help menu, 18-19
  - commands in, 20
- Help Viewer, 18-19
- hiding. *See* showing/hiding
- Highlight Hotspots button, 184
- highlighting
  - HTML code, invalid/incompatible, 361
  - text, 98
- home page, setting, 52
- horizontal alignment options, 138
- horizontal lines, inserting, 90-91
- Hot Java version, checking, 204
- hotspots
  - adding to graphics, 182
  - edges, showing, 184
  - editing, 184
  - text-based hotspots, adding, 182-183
- hover image for interactive buttons, 191
- HSL (hue, saturation, luminosity)
  - colors, 377
- HTML (Hypertext Markup Language), 37,
  - 286. *See also* bookmarks; code snippets; CSS (Cascading Style Sheets); Master page; Quick Tag Editor; Quick Tag selector; tag-based styles
- attributes of HTML tags, 286, 292
- Code view displaying, 16
- compatibility, checking for, 342-343
- for CSS pages, 306
- displaying Web pages in, 49
- exporting Web content as, 66
- finding/replacing tags, 104-105
- form results, saving, 274



## HTML *(continued)*

- inserting
    - common tags, 288-289
    - tags, 290
    - text from HTML code, 115
  - invalid/incompatible HTML, highlighting, 361
  - language of page, specifying, 55
  - optimizing published HTML code, 344-345
  - pages, creating, 44-45
  - properties of tags, showing, 290
  - QuickTag Selector/Quick Tag Editor, 286
  - saving files, 75
  - tabs, support for, 222
  - tag tools, using, 290-291
  - text, tags for, 78
  - working with, 286
- HTTP (Hyper-Text Transfer Protocol).  
*See also* HTTP sites
- Internet URLs including, 33
- HTTP sites, 24-25
- for empty Web site, 31
- HTTPS sites, 24-25
- hue of color, 377
- hyperlinks. *See also* hotspots
- to Adobe Acrobat files, 175
  - to bookmarks, 172
  - colors, changing, 178-179
  - deleting, 178
  - editing, 178-179
  - to e-mail addresses, 176
  - to files, 174-175
  - graphics, adding to, 180-181
  - for interactive buttons, 190-191
  - for new internal page, 180-181
  - to non-available Web pages, 172-173
  - Open Browser behavior, 208
  - parameters, adding, 173
  - recalculating hyperlinks, 187
  - repairing broken links, 188
  - ScreenTips, adding, 185
  - single hyperlink, verifying, 187
  - tag-based styles for, 298
  - to target frames, 177
  - verifying, 187
  - to Web pages, 174
- Hyperlinks view, 14-15, 186

## I

- IDs
- CSS layout, styles for, 308-309
  - layers, value for, 136
  - for tables, 360
- image maps for hotspots, 182
- images. *See* graphics
- importing/exporting
- copy and paste, exporting with, 67
  - folders and files, importing content from, 34
  - Photoshop files, 122-123
  - Web content, exporting, 66-67
  - Web site, importing content from, 34-35
- indenting
- with Auto Indent, 361
  - paragraph indentation, changing, 86-87
- inherit positioning, 305
- inline frames
- inserting, 245
  - properties, changing, 249
- inline styles, 287
- creating, 300
- input elements in forms, 261
- Insert HTML command, 294
- Insert Table dialog box, 218
- insertion point, 11
- Install Now option, 3
- installing
- browsers, 63
  - Expression Web, 3
  - .NET Framework 2.0, 2
- IntelliSense, 286
- options, setting, 297
  - PHP for, 322-333
  - using, 296
- interactive buttons, 189
- copying, 192
  - creating, 190-191
  - editing, 192-193
- interlaced graphics, 119
- internal style sheets, 287
- Internet Explorer
- version, checking, 204
  - work with Silverlight, 162
- Internet Information Services (IIS), 217
- Internet URLs, 33



ISAPI as form handler, 278

italicizing

text, 98

updates tags for, 360

## J

JavaScript, 37

Call Script behavior with, 209

saving files, 75

job

in Expression Encoder, 395

JPEG format, 118. *See also* graphics

bullets, customizing, 93

exporting Web content as, 66

Jump Menu behavior, 198-199

style, changing, 199

Jump Menu Go behavior, 198-199

justified text, 88

## K

Keyboard effect, 100

keyboards

languages, switching for, 360

layout, specifying, 110

keywords, specifying, 54

## L

labels for forms, 261, 253a

languages

keyboards, automatic switching of, 360

spell-checking, 110-111

for Web site, 55, 352-353

layers, creating, 137

Layers task pane, 136-137

layout tables

creating, 212-213

drawing tables and cells, 214-215

height, 213, 216

modifying, 216

moving, 214-215

properties, changing, 213

resizing, 213-215

layouts. *See* CSS (Cascading Style Sheets)

left-aligning

table cell contents, 231

text, 88

lines

breaks, inserting, 82-83

horizontal lines, inserting, 90-91

marks, showing/hiding, 82

numbers, displaying, 361

spacing, changing, 86-87

links, 169. *See also* hyperlinks

Web pages, opening, 46

List Members command, 296

lists. *See also* bulleted/numbered lists

definition list, creating, 96-97

sublists, creating, 94

loading COM add-ins, 383

log on forms, 257

logos as watermark, 56

Loop option, 55

low resolution graphics, creating, 150-151

luminosity of color, 377

## M

macros, 355, 378-379

debugging macros, 378-379, 382

deleting macros, 381

Menu bar, assigning to, 368

recording macros, 380

running macros, 381

Sub/End Sub in, 379

Manage Styles task pane, 198, 287, 295

tag-based styles in, 298

margins

current page margins, setting, 55

frame margins, setting, 248

graphics, adding to, 145

for inline frames, 249

in layout tables, 213

left margin, adding, 361

Print Page Setup dialog box,  
setting in, 65

viewing and changing, 17

Margins and Padding command, 17

Master page

creating, 72

detaching, 73

format, 37

saving, 75

master.dwt, 26



- mathematical symbols, inserting, 89
- maximizing task panes, 8
- Menu bar, customizing, 368-369
- menus
  - accelerator key, assigning, 368
  - commands, executing, 7
  - editing entries, 374
  - Jump Menu behavior, adding, 198-199
  - naming new menus, 369
  - new menu, creating, 369
  - options, changing, 375
- merging cells in tables, 228-229
- metadata, 24
  - configuring use of, 352
- Microsoft Access, saving form
  - results to, 280
- Microsoft Excel data, tables from, 217
- Microsoft Expression Blend. [See Expression Blend](#)
- Microsoft Expression Design. [See Expression Design](#)
- Microsoft Expression Development Server. [See Expression Development Server](#)
- Microsoft Expression Encoder. [See Silverlight](#)
- Microsoft Expression Media. [See Expression Media](#)
- Microsoft Silverlight. [See Silverlight](#)
- Microsoft Expression Web Online, 20
- Microsoft Expression Web Setup Wizard, 3
- Microsoft FrontPage. [See also](#) FrontPage Extensions
  - importing page from, 34
- Microsoft Vista system requirements, 2
- Microsoft Visual Basic Editor, 379
- Microsoft Windows Media Player, 204
- Microsoft Windows XP system
  - requirements, 2
- MIDI, Play Sound behavior with, 210
- minimizing task panes, 8
- More Colors option, 101
- MOV. [See](#) Apple QuickTime
- moving
  - external style sheets, internal styles to, 303
  - files, 12
  - graphics, 126
  - hotspots, 184
  - layout tables, 214-215

- text, 84-85
  - toolbars, 6-7
  - in Web pages, 11, 51
- Mozilla 5.0 version, checking, 204
- MPEG (Motion Picture Experts Group), 153
  - ActiveX controls, setting security options, 164
  - previewing, 166-167
- multimedia, 153 [See also](#) sounds
  - ActiveX Controls
    - options, setting, 164
    - running, 165
  - inserting
    - Flash, 154-155
    - Silverlight media, 163
    - Windows Media, 158-159
  - playing, 166-167
  - previewing, 167-168
- My Templates tab, 68

## N

- naming/renaming
  - bookmarks, 170
  - class-based styles, 299
  - custom toolbars, 373
  - files, 12
  - forms, 260
  - frames for hyperlinks, 248
  - inline frame hyperlinks, 249
  - menus, 369
  - UNC (Universal Naming Conventions), 347
  - Web site, renaming, 40, 352
- navigating
  - to bookmarks, 170-171
  - in tables, 220
  - Web pages, 48
- .NET Framework 2.0, installing, 2
- .NET Programmability Support, installing, 3
- Netscape Navigator version, checking, 204
- New command, 11
- New dialog box
  - adding pages to Web site, 36-37
  - for one page blank Web site, 30
  - templates in, 243
  - Web Site tab, 25
- New Document button, 11



- New Document dialog box
  - in Expression Design, 387
- new folders, creating, 50
- New Style button, 298
- NSAPI as form handler, 278
- numbered lists. *See* bulleted/numbered lists
- numerically resizing graphics, 129

## O

- objects. *See* graphics
- ODBC-compliant database, saving form results to, 280
- one page site, creating, 30
- one-celled table, creating, 222
- Open Browser behavior, 208
- opening
  - existing Web pages/Web sites, 13, 32-33
  - Find and Replace dialog box, 104
  - folders and files, 10
  - Pictures toolbar, 139
  - task panes, 9
  - template pages, 26
- Opera version, checking, 204
- optimizing published HTML code, 344-345
- order forms, 257
- Overline effect, 100

## P

- padding. *See also* tables
  - graphics, adding to, 145
  - viewing and changing, 17
- Page Default target hyperlink, 177
- page descriptions, adding, 54
- Page Editor Options dialog box, 119
  - code formatting options, 362-363
  - code snippet options, changing, 364
  - compatibility, checking, 342
  - CSS options, setting, 312
  - customizing with, 360-361
  - default text, changing, 114
  - IntelliSense in, 296
- page numbers, adding, 65
- Page Options dialog box
  - grid options, 304
  - ruler options, 304

- Page Properties dialog box, 54-55
- Page Size command, 60-61
- Page view, opening Web page in, 13
- paragraphs
  - behaviors to text, adding, 195
  - breaks, inserting, 83
  - containers, 82
  - indentation, changing, 86-87
  - marks, showing/hiding, 82
  - PasteText options, 85
  - tag-based styles for, 298
- Parameter Info command, 296
- Parent Frame target hyperlink, 177
- passwords for forms, 261
- pasteboard
  - in Expression Design, 387
- Paste command, 84-85
- PasteText command, 84-85
  - options, 85
- pasting
  - exporting Web content by, 67
  - graphics from Web, 125
  - ID duplicates, eliminating, 360
  - text, 84-85
  - toolbar button image, 374
- PDAs (personal data assistants). *See* CSS (Cascading Style Sheets)
- PDF files, hyperlinks to, 175
- Personal Web Package
  - creating, 38
  - importing, 34
- Photoshop PSD files
  - inserting, 122-123
  - editing, 122-123
- PHP
  - create, page, 321
  - IntelliSense, for PHP, 323
  - code
    - overview, 320
    - example, 320
    - insert script, 324-325
    - work with, 322
  - options, setting for Web sites, 352-353
  - preview pages, with Expression Development Server, 352-353
- PHP hyperlink parameters, adding, 173
- Picture Actions button, 128



Picture dialog box for thumbnails, 121  
pictures  
    background, using as, 56  
    bullets, using as, 93  
    forms, picture buttons in, 261, 272  
    tables, adding to, 240  
Pictures toolbar. *See also* graphics  
    Bring Forward/Send Backward buttons, 135  
    Crop button, 132  
    graphics, modifying, 127  
    opening, 139  
pixels  
    in Expression Design, 386  
plain text option, 85  
Play Sound behavior, 210  
plug-ins  
    changing properties, 384  
    checking for, 204-205  
PNG files, 118  
Popup Message behavior, 200  
Position Absolutely button, 134  
Position dialog box, 135  
positioning. *See also* absolute positioning  
    graphics, 134  
    properties, 305  
    table captions, 225  
PPT format, exporting Web content in, 66  
preloading images, 202  
    button images, 191  
pressed image for interactive button, 191  
Preview in Browser button, 62  
previewing  
    in browsers, 62-63  
    printed Web pages, 64-65  
    Web sites, 352  
Print Page Setup dialog box, 65  
Print Preview, 64-65  
printing Web pages, 64-65  
printouts, previewing, 64-65  
privacy information, obtaining, 20  
profiles  
    in Expression Encoder, 395  
progressive passes graphics, 119  
project  
    in Expression Blend, 396  
properties. *See also* forms; tables

    adding, 207  
    Change Property behavior, 206-207  
    clearing properties, 305  
    deleting, 207  
    floating properties, 305  
    frame properties, changing, 248-249  
    inline frame properties, changing, 249  
    layout table properties, changing, 213  
    modifying, 207  
    publishing properties, changing, 347  
Properties dialog box, 53, 54  
proportional fonts, 114  
publishing Web sites, 335  
    destination, entering, 347  
    "don't" publish pages, marking, 340  
    entire site, publishing, 348  
    individual pages, publishing, 349  
    optimizing published HTML code, 344-345  
    properties, changing, 347  
    settings changing, 352-353  
    UNC (Universal Naming Conventions) and, 347  
    updating Web sites, 350-351  
    working on, 346  
push buttons in forms, 270

## Q

quality graphics, 119  
Que Publishing Web site, 379  
query, saving search as, 105  
query strings, 173  
QuickTag Editor, 49, 286  
    using, 294  
QuickTag Selector, 49, 286  
    using, 293  
QuickTime (MOV), Apple  
    ActiveX controls, setting security options, 164  
    installing for, in Expression Media, 390

## R

radio buttons in forms, 261, 268  
Real Audio, 210  
RealNetworks, 204  
RealPlayer, 204



- RealVideo (RAM), 153, 166
- recalculating hyperlinks, 187
- recording macros, 380
- redoing typing, 81
- REG (red, green, blue) colors, 376
- registration forms, 257
  - form handlers, creating, 279
- relative positioning, 305
- remote servers, connecting to, 346-347
- Remote Web Site view, 14, 346-347
  - files, displaying, 349
- renaming. [See](#) naming/renaming
- repairing hyperlinks, 188
- replacing. [See](#) finding/replacing
- reports
  - saving or copying, 338-339
  - Web site reports, 336-337
- Reports view, 14-15
  - customizing, 358
  - hyperlinks, verifying, 187
- request forms, 257
- Resample button, 128
- resampling graphics, 128-129
- Reset buttons in forms, 261, 270
- Reset Workspace Layout option, 9
- resizing. [See also](#) tables
  - frames, 247
  - graphics, 128-129
  - hotspots, 184
  - layout tables and cells, 213-215
  - positioning layer, 135
  - toolbars, 6-7
  - Web pages, 60-61, 63
- Restore button, 152
- restoring
  - with Change Property Restore behavior, 206-207
  - graphics, 152
  - with Swap Image Restore behavior, 202-203
- right-aligning
  - table cell contents, 231
  - text, 88
- rotating graphics, 133
- RSS feed. [See](#) XML
- RTF files, inserting text from, 115
- rulers, working with, 304

running macros, 381

## S

- Same Frame target hyperlink, 177
- Sample effect, 100
- saturation of color, 377
- Save All command, 39
- Save As dialog box, 12
  - file type, changing, 74
- Save AsType list arrow, 74
- Save Embedded Files dialog
  - box, 39, 119, 127
  - formats, changing, 148
- saving
  - different formats, Web pages in, 74
  - frames pages, 250-251
  - framesets, 251
  - list of formats, 75
  - and previewing, 63
  - reports, 338-339
  - Web pages, 12
  - Web sites, 39
- scanner, inserting graphics from, 124
- ScreenTips
  - hyperlinks, adding to, 185
  - shortcut keys, showing, 375
  - tag attributes for, 292
- scripts
  - Call Script behavior, 209
  - executing, 209
  - Web site script language, 352-353
- scrollbars. [See](#) frames
- search forms, 257
- searching. [See also](#) finding/replacing
  - for help, 19
- Section 508 accessibility requirements, 341
- Select File dialog box, 115
- selecting
  - graphics, 126
  - table elements, 221
  - text, 79
- Selector, 287, 298
- Send Backward/Bring Forward, 135
- servers
  - opening Web site from, 33
  - remote server, connecting to, 346-347



- SetText behavior, 200
- SetText of Frame behavior, 200
- SetText of Layer behavior, 200
- SetText of Status Bar behavior, 200-201
- SetText ofText Field behavior, 200
- shading
  - for graphics, 146-147
  - for lines, 91
- shortcut keys, displaying, 375
- ShowTag Properties button, 292
- showing/hiding. *See also* toolbars
  - line marks, 82
  - paragraph marks, 82
  - scrollbars, 253
  - Status bar, 356
  - visual aids, 17
- sight impaired persons, alternative text for, 121
- Silverlight
  - creating
    - in Expression Blend, 396
    - in Expression Encoder, 394, 395
  - inserting, 163
  - overview, 162, 385
- Site Settings dialog box, 352
- size. *See also* resizing
  - font size, 98-99
  - frame size, setting, 248
  - of Web page, 60-61, 63
- Slow Pages report, 358
- Snap to Grid, 304
- snippets. *See* code snippets
- solid lines, creating, 91
- sorting in Web site reports, 337
- sounds
  - background sounds, inserting, 54, 59
  - Play Sound behavior, 210
- spacing. *See also* tables
  - character spacing, changing, 86
  - double-spacing text, 86-87
  - line spacing, changing, 86-87
- span of cell, changing, 235
- spell-checking
  - as you type, 112
  - custom dictionaries, using, 108
  - default spelling language, setting, 111
  - exclusion dictionaries, 108-109
  - languages, setting, 110-111
  - symbols, deleting, 112
  - Web pages, 106
  - Web sites, 106-107
- Split view, 4, 14-15, 16
  - HTML
    - code, viewing, 286
    - pages in, 44-45
- splitting
  - cells in tables, 228
  - frames, 255
- SSL (Secure Sockets Layer), 24-25
  - for empty Web site, 30-31
- stacking order for graphics, changing, 135
- starting Expression Web, 4
- static positioning, 305
- static templates
  - creating, 68
  - saving, 75
- Status bar
  - code errors in, 342
  - SetText ofText Field behavior, 200-201
  - showing/hiding, 356
- Strong effect, 100
- Style Application toolbar, 295
- Style list arrow, 93
- styles, 77, 285. *See also* class-based styles; inline styles; tag-based styles
  - definition list, creating, 96-97
  - deleting, 95
  - heading styles, 96
  - for Jump Menu, 199
  - text, applying to, 95
  - working with, 301
- Sub in macros, 379
- sublists, creating, 94
- Submit buttons in forms, 261, 270
- survey forms, 257
- Swap Image Restore behavior, 202-203
- Swap Images behavior, 194, 202-203
- swapping images, 202-203
- switching
  - between tables, 212
  - between Web pages and views, 16
- symbols, inserting, 89
- synonyms, finding, 113
- system requirements, 2



## T

Table AutoFormat Combo button, 236

table cell padding. *See* padding

Table Properties dialog box, 217, 238, 240

tables, 211. *See also* layout tables

- adding cells, rows or columns to, 226

- alignment

  - of captions, 224

  - cell alignment options, 235

  - of cell contents, 231

  - changing, 232

- AutoFormatting, 237

- backgrounds

  - changing, 238-239

  - formatting, 236

- borders

  - changing, 233

  - colors, changing, 238-239

  - setting, 219

- captions, 224-225

  - deleting, 230

  - repositioning, 225

- colors

  - background colors, changing, 236

  - of borders, 233

  - elements of table, adding to, 238-239

- converting text to, 222

- creating, 218

- deleting elements of, 230

- drawing cells, 214

- Excel data, creating with, 217

- filling cells with information, 223

- floating text in, 232

- formatting, 236-237

- forms, inserting into, 259

- graphics, adding, 240

- height and width

  - changing, 232

  - setting, 219

- horizontal cell alignment, 235

- HTML tab support for, 222

- ID attributes, adding, 360

- images, adding, 240

- information, filling cells with, 223

- layout of cells, changing, 235

- merging cells in, 228-229

- navigating in, 220

- one-celled table, creating, 222

- padding of cells

  - changing, 232

  - setting, 219

- properties, 219

  - changing, 232-233

  - setting, 219

- resizing

  - cells, rows or columns, 234

  - columns and rows, 227

- selecting elements in, 221

- spacing of cells

  - changing, 232

  - setting, 219

- span of cell, changing, 235

- splitting cells, 228

- switching between, 212

- text

  - converting text to table, 222

  - entering, 220

  - filling cells with, 223

  - floating, 232

- vertical cell alignment, 235

Tables toolbar, 236

tabs

- document tabs, navigating with, 48

- form tab order, setting, 262

- HTML tabs, 222

Tag Properties task pane, 8, 273, 287, 290-291, 295

- attributes of tags, setting, 292

- display, changing, 290-291

tag-based styles, 287

- creating, 298

tags. *See* HTML (Hypertext Markup Language)

target frames, creating, 252

target hyperlinks, creating, 177

task panes

- contents, displaying, 9

- maximizing/minimizing, 8

- opening/closing, 9

- rearranging, 9

tasks for misspelled words, 107



templates, 23. *See also* dynamic templates;  
frames pages; static templates  
adding pages to Web site with, 36-37  
copying pages for new Web pages, 29  
creating Web sites with, 25  
for CSS layout page, 306-307  
deleting pages in, 28  
for layout tables, 212  
opening template pages, 26  
planning, 24  
replacing content in, 27  
text from, 78

text, 77. *See also* fonts; headings; lines;  
paragraphs; tables; wrapping text  
alignment, setting, 88  
behaviors, adding, 195  
blank page, entering on, 78  
character spacing, changing, 86  
default text, changing, 114  
drag-and-drop, moving/copying with, 84  
editing text, 80  
file, inserting text from, 115  
finding/replacing, 102-103  
floating properties, 305  
formatting, 98-99  
hotspots, adding text-based, 182-183  
for inline frames, 249  
inserting and editing, 80  
Open Browser behavior with, 208  
redoing typing, 81  
selecting text, 79  
styles, applying, 95  
symbols, inserting, 89  
template text, working with, 78  
undoing typing, 81

text area/text boxes in forms, 261, 264-265

text files, 37  
inserting text from, 115  
saving, 75

text messages in Popup Message window,  
200

thesaurus, using, 113

thumbnails  
auto thumbnail properties, setting,  
130-131  
creating, 130  
displaying images, 121

tiling, avoiding, 56

titles  
centered text for, 88  
of frames, 248-249, 250-251  
for inline frames, 249  
Web page title, changing, 53, 54

toolbars  
adding/deleting buttons, 371  
commands  
choosing, 6  
copying, 369  
custom toolbar, creating, 372-373  
deleting  
buttons, 371  
custom toolbar, 373  
editing buttons, 374  
moving, 6-7  
options, changing, 375  
renaming custom toolbar, 373  
resizing, 6-7  
showing/hiding, 6  
buttons, 370

Toolbox, 8

tools  
CSS tools, 287, 295  
tag tools, using, 290-291

tooltips. *See* ScreenTips

Trace Image option, 121

tracing graphics, 121

transparent graphics, 119  
converting to, 142-143

turning on/off paste options, 85

## U

UNC (Universal Naming Conventions), 347

Under Construction Pictures, 56

underlining text, 98

undocking toolbars, 6-7

undoing  
bevel changes, 144  
text, 81

Unicode, 55

unloading COM add-ins, 383

updates  
checking for, 20  
databases, 281  
dynamic templates, updating, 71  
Web sites, 350-351



- upload fields in forms, 273
- URLs (Uniform Resource Locators)
  - existing Web page, opening, 13
  - for frames, 248
  - Go To URL behavior, 197
  - hotspot URLs, editing, 184
  - Internet URLs, 33
  - Open Browser behavior, specifying, 208
  - opening Web sites with, 32
  - and publishing Web sites, 347
- user-defined styles, 95
- user interface, in Expression Web
  - color scheme, changing, 5, 356

## V

- Variable effect, 100
- VBScript files, saving, 75
- vector graphics
  - in Expression Design, 386, 388-389
- verifying hyperlinks, 187
- versions of browser, checking for, 204
- vertical alignment of graphics, 138-139
- Vertical Split template, 243
- video formats, 153
- View tabs, 4
- views and viewing
  - behaviors, 194
  - frames pages, 242
  - switching between Web pages and, 16
  - Tables toolbar, 236
  - Web site reports, 336
  - working with views, 14-15
- visibility behaviors, 206-207
- Vista. [See](#) Windows Vista
- visual aids, showing/hiding, 17
- Visual Aids menu, 17
- visually impaired persons, alternative text for, 121

## W

- watermarks, 54, 56
  - background picture as watermark, inserting, 56-57
- WAV files, 210
- WCAG accessibility requirements, 341
- Web pages. [See also](#) backgrounds; hyper-

- links; Master page; previewing; publishing Web sites; saving; text; Web sites

- accessibility, checking for, 341
- advanced properties, setting, 55
- animating page transitions, 76
- ASP.NET pages, creating, 314
- closing, 21
- compatibility, checking for, 342-343
- Content page, 72-73
- copy of page, opening, 47
- CSS pages, creating, 306
- deleting, 50
- disabilities, accessibility for users with, 341
- existing page, opening, 13
- external style sheets, attaching, 302-303
- finding/replacing text or code, 102-103
- Folder list, opening with, 47
- Folders view, opening in, 46
- formats for, 37
- formatting options, setting, 54
- general options, setting, 54
- Go To URL behavior, 197
- graphic format, changing, 149
- home page, setting as, 52
- HTML pages, creating, 44-45
- hyperlinks, creating, 174
- language of page, specifying, 55
- moving, 51
- navigating, 48
- new folders, creating, 51
- page numbers, adding, 65
- previewing, 62-63
- properties, changing, 54-55
- recently opened pages, opening, 13
- renaming, 50
- saving, 12
- simple page, creating, 11
- size, setting, 60-61, 63
- spell-checking, 106
- switching between views and, 16
- title, changing, 53
- Web servers. [See](#) servers
- Web Site Wizard, importing with, 34
- Web sites. [See also](#) publishing Web sites; templates; Web pages;
  - adding pages to, 36-37



- animating page transitions, 76
- deleting, 41
- empty Web site, creating, 30-31
- existing site, opening, 32-33
- finding/replacing text or code, 102-103
- folders and files, list of, 10
- Go To URL behavior, 197
- importing content from, 34-35
- introduction to, 23
- languages, setting, 110-111
- last opened site, opening, 32
- names, changing, 352
- one page site, creating, 30
- planning, 24
- previewing, 352
- recently opened site, opening, 32
- remote servers, connecting to, 346-347
- renaming, 40
- reports, generating, 336-337
- saving, 39
- spell-checking, 106-107
- types of, 24
- updating, 350-351
- WebDAV, 34
  - as remote server, 346
- WebTV version, checking, 204
- Whole Page target hyperlink, 177
- width. *See also* tables
  - of interactive buttons, 191
  - of layout tables, 213, 216
  - line width, changing, 91
- window, viewing, 5
- Windows color scheme
  - changing, user interface, 5, 356
- Windows Media Audio (WMA)
  - inserting, 158-159
  - setting options, 160
- Windows Media Video (WMV)
  - inserting, 158-159
  - setting options, 160
- Windows menu, navigating with, 48
- Windows Vista
  - exclusion dictionary in, 109
  - languages, setting keyboard for, 110
- Windows Presentation Foundation
  - in Expression Blend, 396

- Windows XP
  - exclusion dictionary in, 109
  - languages, setting keyboard for, 110
- WMF files, 118. *See also* graphics
- WMfiles, 119
- Word 2007 files, 115
- word wrap, 361
- workgroups
  - removed from product, 403
- WrapTag command, 294
- Wrapping Style options, 138
- wrapping text, 11
  - on graphics, 138
  - word wrap, 361
- WYSIWYG view, 14

## X

- XAML (eXtensible Application Markup Language)
  - creating, 396
  - inserting, Silverlight media, 163
  - overview, 162-163
- XHTML 1.0 Transitional rules, 342
- XLS format, exporting Web content as, 66
- XML (eXtensible Markup Language), 37, 326
  - applying, 335
  - checking, pages, 332
  - creating
    - page, 326
  - data view
    - creating, 327
    - formatting, 330-331
    - work with, 328-329
  - form results, saving, 274
  - formatting, applying, 333
  - RSS feed, 334
  - saving, 75

## Z

- ZIP files, hyperlinks to, 175
- z-value
  - for layers, 136
  - for positioning graphics, 135