

# Introduction

---

Welcome to *Microsoft Expression Web On Demand*, a visual quick reference book that shows you how to work efficiently with Expression Web. This book provides complete coverage of basic to advanced Expression Web skills.

## How This Book Works

You don't have to read this book in any particular order. We've designed the book so that you can jump in, get the information you need, and jump out. However, the book does follow a logical progression from simple tasks to more complex ones. Each task is presented on no more than two facing pages, which lets you focus on a single task without having to turn the page. To find the information that you need, just look up the task in the table of contents or index, and turn to the page listed. Read the task introduction, follow the step-by-step instructions in the left column along with screen illustrations in the right column, and you're done.

## What Happened to FrontPage?

Microsoft Expression Web is not an upgrade to Microsoft FrontPage. It's new Web Development software designed to deliver standards-compliant Web sites yet still maintain the ease of use found in FrontPage. If you built a Web site using FrontPage, you can open it using Expression Web. However, there may be migration issues because FrontPage uses some nonstandard tools.

## Keyboard Shortcuts

Most menu commands have a keyboard equivalent, such as Ctrl+P, as a quicker alternative to using the mouse. A complete list of keyboard shortcuts is available in the back of this book and on the Web at [www.perspection.com](http://www.perspection.com).



## How You'll Learn

**How This Book Works**

**What Happened to FrontPage?**

**Keyboard Shortcuts**

**Step-by-Step Instructions**

**Real World Examples**

**Workshop**

**Get More on the Web**

**Get Updates**

**Expression Studio**

# Step-by-Step Instructions

This book provides concise step-by-step instructions that show you “how” to accomplish a task. Each set of instructions include illustrations that directly correspond to the easy-to-read steps. Also included in the text are time-savers, tables, and sidebars to help you work more efficiently or to teach you more in-depth information. A “Did You Know?” provides tips and techniques to help you work smarter, while a “See Also” leads you to other parts of the book containing related information about the task.

## Working with Layers

### Create and Name a Layer

- 1 Open and display the Web page you want to use.
- 2 Click the **Format** menu, and then click **Layers** to display the Layers task pane.
- 3 Click the **New Layer** button on the Layers task pane.
- 4 Double-click the layer name you want to change.
- 5 Type a new name (no spaces), and then press Enter.
- 6 To insert a graphic or text, click in the layer, and then use the **Insert Picture** button on the Pictures toolbar or type text.
- 7 When you're done, click the **Close** button on the task pane.

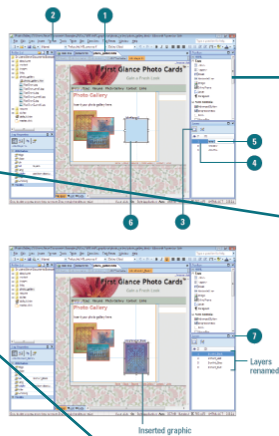
### Did You Know?

You can delete a layer quickly. Click the layer edge or ID value, and then press Delete.

### See Also

See “Setting Position Properties” on page 285 for information on setting position properties for layers.

Expression Web provides the Layers task pane to make it easy to work with layers. You can use the Layers task pane to create, name, and control the display of layered elements. In addition to creating a layer when you apply positioning, you can also insert or draw empty layers and then insert graphics and text. In the task pane, you can click the Eye icon to toggle between visible (eye open), hidden (eye closed), and shunt (no icon). The inherit state takes its visibility from the positioned element. The z-value in the task pane identifies the overlap (where the higher z-value appears on top). The ID value is the layer name referred to by scripts and style sheets.



Easy-to-follow introductions focus on a single concept.

Illustrations match the numbered steps.

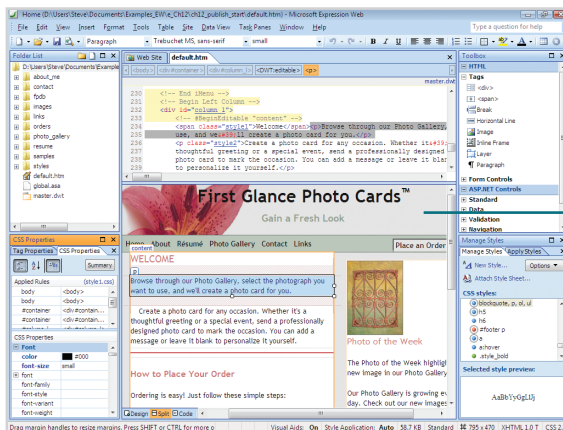
Numbered steps guide you through each task.

See Also points you to related information in the book.

Did You Know? alerts you to tips, techniques and related information.

# Real World Examples

This book uses real world examples files to give you a context in which to use the task. By using the example files, you won't waste time looking for or creating sample files. You get a start file and a result file, so you can compare your work. Not every topic needs an example file, such as changing options, so we provide a complete list of the example files used throughout the book. The example files that you need for project tasks along with a complete file list are available on the Web at [www.perspection.com](http://www.perspection.com).



Real world examples help you apply what you've learned to other tasks.

## Workshop

This book shows you how to put together the individual step-by-step tasks into indepth projects with the Workshop. You start each project with a sample file, work through the steps, and then compare your results with project results file at the end. The Workshop projects and associated files are available on the Web at [www.perspection.com](http://www.perspection.com).

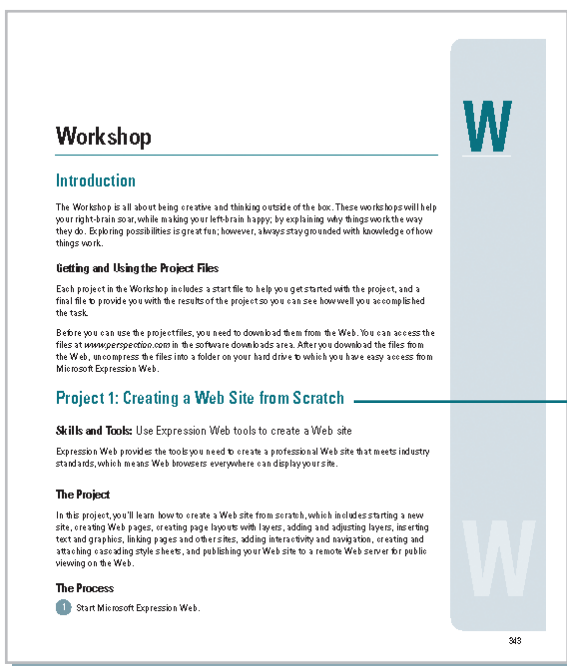
## Get More on the Web

In addition to the information in this book, you can also get more information on the Web to help you get up to speed faster with Expression Web. Some of the information includes:

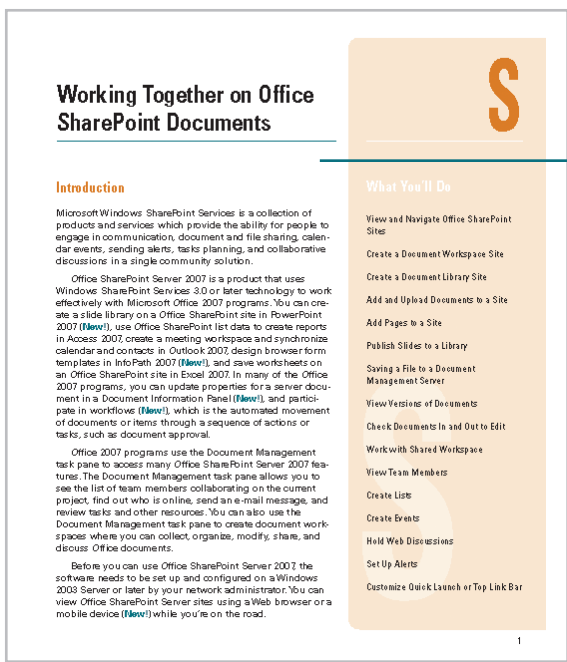
### More Content

- ◆ **Photographs.** Download photographs and other graphics to use in your Web pages.
- ◆ **More Content.** Download new content developed after publication.

You can access these additional resources on the Web at [www.perspection.com](http://www.perspection.com).



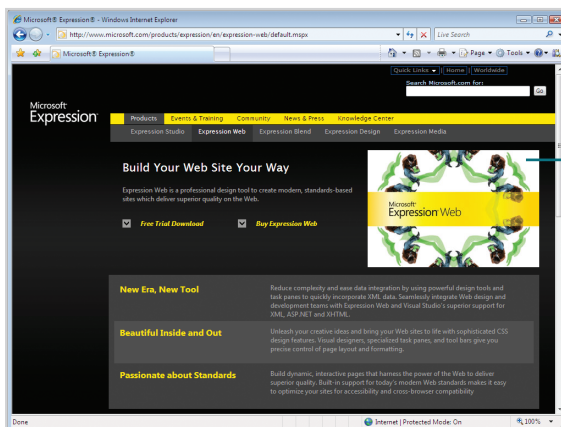
The **Workshop** walks you through indepth projects to help you put Expression Web to work.



Additional content is available on the Web. You can download a chapter on SharePoint.

## Get Updates

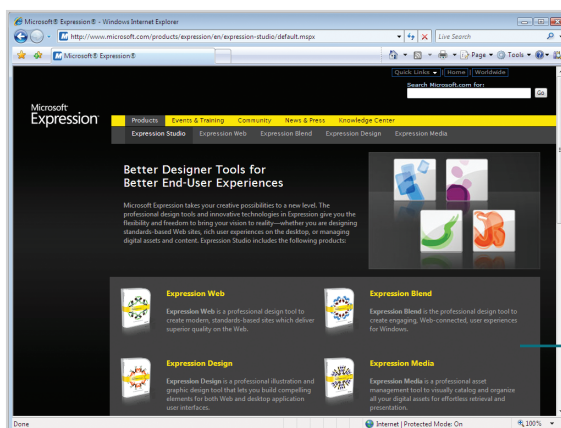
Like any software, it continues to change and get better with updates and patches, so it's important to regularly check the Microsoft Expression Web site at [www.microsoft.com/products/expression/](http://www.microsoft.com/products/expression/).



Get Updates for Expression Web online.

## Expression Studio

Expression Web is part of the Microsoft Expression Studio, which includes Expression Design, Blend, and Media. Expression Design is a professional illustration and graphic design tool that lets you build compelling elements for both Web and desktop application user interfaces. Expression Blend is the professional design tool to create engaging, Web-connected, user experiences for Windows. Expression Media is a professional asset management tool to visually catalog and organize all your digital assets for effortless retrieval and presentation.



Expression Studio combines Web tools to create an expanded Web development environment.