

Apple Pro Training Series

OS X Support Essentials 10.10

Supporting and Troubleshooting OS X Yosemite

Kevin M. White and Gordon Davisson

Lesson and media files available for download



Certification exam preparation for:
Apple Certified Support Professional 10.10

Apple Pro Training Series

OS X Support Essentials 10.10

Kevin M. White and Gordon Davisson



Apple Pro Training Series: OS X Support Essentials 10.10
Kevin M. White and Gordon Davisson
Copyright © 2015 by Peachpit Press

Peachpit Press
www.peachpit.com

To report errors, please send a note to errata@peachpit.com.
Peachpit Press is a division of Pearson Education.

Apple Series Editor: Lisa McClain
Production Editor: Tracey Croom
Technical Editor: Adam Karneboge
Apple Reviewer: Yulia Stolerman
Apple Project Managers: Yulia Stolerman,
Debra Otterstetter
Copy Editors: Leslie Tilley, Kim Wimpsett

Proofreader: Darren Meiss
Production Services: Happenstance Type-O-Rama
Indexer: Jack Lewis
Cover Illustration: Paul Mavrides
Cover Production: Cody Gates, Happenstance Type-O-Rama

Notice of Rights

All rights reserved. No part of this book may be reproduced or transmitted in any form by any means, electronic, mechanical, photocopying, recording, or otherwise, without the prior written permission of the publisher. For information on getting permission for reprints and excerpts, contact permissions@peachpit.com.

Notice of Liability

The information in this book is distributed on an “As Is” basis, without warranty. While every precaution has been taken in the preparation of the book, neither the authors nor Peachpit shall have any liability to any person or entity with respect to any loss or damage caused or alleged to be caused directly or indirectly by the instructions contained in this book or by the computer software and hardware products described in it.

IMPORTANT: Some of the exercises contained in this guide can be temporarily disruptive, and some exercises, if performed incorrectly, could result in data loss or damage to system files. As such, it’s recommended that you perform these exercises on a Mac computer that is not critical to your daily productivity.

Trademarks

Many of the designations used by manufacturers and sellers to distinguish their products are claimed as trademarks. Where those designations appear in this book, and Peachpit was aware of a trademark claim, the designations appear as requested by the owner of the trademark. All other product names and services identified throughout this book are used in editorial fashion only and for the benefit of such companies with no intention of infringement of the trademark. No such use, or the use of any trade name, is intended to convey endorsement or other affiliation with this book.

ISBN 13: 978-0-13-401471-5

ISBN 10: 0-13-401471-5

9 8 7 6 5 4 3 2 1 Printed and bound in the United States of America

Alternate Binding:

ISBN 13: 978-0-13-403768-4

ISBN 10: 0-13-403768-5

9 8 7 6 5 4 3 2 1 Printed and bound in the United States of America

*I could not have made this journey without the support of my family and
loving wife, Michelle.*

This book is dedicated to my greatest works: Logan, Sawyer, and Emily.

— Kevin White

Much appreciation to my amazing wife, Berit Benson, and her uncanny ability to sense when I needed coffee the most.

— Gordon Davisson

This page intentionally left blank

Acknowledgments In addition to the amazing Peachpit staff members who were instrumental in completing this work, we would like to thank the development team for their hard work: Adam Karneboge, Yulia Stolerma, and Craig Cohen. Additional thanks go out to Debbie Otterstetter, John Signa, Shane Ross, Eugene Evon, Cindy Waller, Arek Dreyer, Ben Greisler, Schoun Regan, Patrick Gallagher, and Timothy Perfitt. Also, the accuracy of this guide has been greatly enhanced by feedback from those who reviewed early versions of the guide, including attendees of the Yosemite Support Essentials beta class.

This page intentionally left blank

Contents at a Glance

About This Guide.	xxi
Installation and Configuration	
Lesson 1 Install OS X Yosemite.	3
Lesson 2 Setup and Configuration.	43
Lesson 3 OS X Recovery.	87
Lesson 4 OS X Software Updates.	107
User Accounts	
Lesson 5 User Accounts.	127
Lesson 6 User Home Folders.	157
Lesson 7 System Security.	175
Lesson 8 Keychain Management.	219
File Systems	
Lesson 9 File Systems and Storage.	245
Lesson 10 FileVault.	287
Lesson 11 Permissions and Sharing.	311
Lesson 12 File System Troubleshooting.	341
Data Management	
Lesson 13 Hidden Items, Shortcuts, and File Archives.	377
Lesson 14 System Resources.	401
Lesson 15 Metadata and Spotlight.	421
Lesson 16 Time Machine.	441
Applications and Processes	
Lesson 17 Application Installation.	475

Lesson 18	Document Management.	527
Lesson 19	Application Management and Troubleshooting.	577
Network Configuration		
Lesson 20	Network Essentials.	621
Lesson 21	Advanced Network Configuration.	647
Lesson 22	Network Troubleshooting.	699
Network Services		
Lesson 23	Network Services.	727
Lesson 24	Host Sharing and Personal Firewall.	791
System Management		
Lesson 25	Peripherals and Drivers.	837
Lesson 26	Print and Scan.	857
Lesson 27	System Troubleshooting.	899
	Index.	931
Appendix A	Lesson Review Questions and Answers.	A-1
Appendix B	Additional Resources.	B-1

Bonus chapters mentioned in this eBook are available after the index.

See last page of this eBook for instructions on downloading your lesson files.

Table of Contents

About This Guide.	xxi
---------------------------	-----

Installation and Configuration

Lesson 1	Install OS X Yosemite.	3
Reference 1.1	About OS X Yosemite.	3
Reference 1.2	Installation Choices.	5
Reference 1.3	Before Upgrading a Previous System.	7
Reference 1.4	Preparing the System Disk.	14
Reference 1.5	Upgrading and Installing.	17
Reference 1.6	Installer Troubleshooting.	21
Exercise 1.1	Prepare a Mac for Upgrade.	23
Exercise 1.2	Upgrade to OS X Yosemite.	30
Exercise 1.3	Erase a Mac System and Install OS X Yosemite.	33
Exercise 1.4	Verify System Installation.	40
Lesson 2	Setup and Configuration.	43
Reference 2.1	Setup Assistant.	43
Reference 2.2	System Preferences.	52
Reference 2.3	Profiles.	55
Reference 2.4	System Information.	57
Exercise 2.1	Configure a New OS X System for Exercises.	60
Exercise 2.2	Configure an Existing OS X System for Exercises.	63
Exercise 2.3	Examine System Preferences.	66
Exercise 2.4	Download the Student Materials in a Classroom.	73

Exercise 2.5	Download the Student Materials Independently.	76
Exercise 2.6	Install a Configuration Profile.	79
Exercise 2.7	Examine System Information.	83
Lesson 3	OS X Recovery.	87
Reference 3.1	Startup from OS X Recovery.	87
Reference 3.2	OS X Recovery Utilities.	89
Reference 3.3	External OS X Recovery Disk.	92
Exercise 3.1	Use OS X Recovery.	93
Exercise 3.2	Create an OS X Install Disk.	99
Lesson 4	OS X Software Updates.	107
Reference 4.1	Automatic Software Updates.	107
Reference 4.2	Manual Software Updates.	114
Reference 4.3	Installation History.	117
Exercise 4.1	Manually Install Software Updates in a Classroom	118
Exercise 4.2	Manually Install Software Updates Independently.	119
Exercise 4.3	Use Automatic Software Update.	121

User Accounts

Lesson 5	User Accounts.	127
Reference 5.1	User Account Essentials.	127
Reference 5.2	User Account Management.	132
Reference 5.3	Parental Controls.	138
Reference 5.4	Login and Fast User Switching.	139
Exercise 5.1	Manage User Accounts.	145
Exercise 5.2	Create a Managed User Account.	153
Lesson 6	User Home Folders.	157
Reference 6.1	Home Folder Contents	157
Reference 6.2	Deleting User Accounts.	159
Reference 6.3	Migrating and Restoring Home Folders.	161

Exercise 6.1	Restore a Deleted User Account.	166
Lesson 7	System Security.	175
Reference 7.1	Account Passwords.	175
Reference 7.2	Resetting Passwords.	182
Reference 7.3	System Security Settings.	189
Reference 7.5	Firmware Password.	200
Exercise 7.1	Reset Account Passwords in OS X Recovery.	202
Exercise 7.2	Reset Account Passwords.	206
Exercise 7.3	Synchronize Keychain Passwords.	211
Exercise 7.4	Use a Firmware Password.	215
Lesson 8	Keychain Management.	219
Reference 8.1	Keychain Architecture.	219
Reference 8.2	Keychain Management.	221
Reference 8.3	iCloud Keychain.	229
Exercise 8.1	Manage Keychains.	234

File Systems

Lesson 9	File Systems and Storage.	245
Reference 9.1	File System Components.	245
Reference 9.2	Managing File Systems.	252
Reference 9.3	Mounting, Unmounting, and Ejecting.	263
Exercise 9.1	Repartition a Disk Dynamically.	268
Exercise 9.2	Erase and Partition a Disk.	270
Exercise 9.3	Examine Disk Ejection.	274
Exercise 9.4	Encrypt a Volume.	278
Exercise 9.5	Securely Erase Disk Data.	282
Lesson 10	FileVault.	287
Reference 10.1	FileVault Technology.	287
Reference 10.2	Enabling FileVault.	289

Reference 10.3	FileVault Recovery.	293
Exercise 10.1	Turn On FileVault.	296
Exercise 10.2	Restart a FileVault-Protected System.	301
Exercise 10.3	Use a FileVault Recovery Key.	304
Exercise 10.4	Turn Off FileVault.	308
Lesson 11	Permissions and Sharing.	311
Reference 11.1	File System Permissions.	311
Reference 11.2	Permissions for Sharing.	319
Reference 11.3	Managing Permissions	326
Exercise 11.1	Create Items with Default Permissions.	332
Exercise 11.2	Test Permissions Changes.	337
Lesson 12	File System Troubleshooting.	341
Reference 12.1	File System Inspection.	341
Reference 12.2	Troubleshoot Partitions and Volumes.	346
Reference 12.3	Troubleshoot File System Permissions.	350
Exercise 12.1	Examine Local Storage.	353
Exercise 12.2	Repair Partitions and Volumes in Target Disk Mode.	360
Exercise 12.3	Repair Partitions and Volumes in OS X Recovery Mode.	368
 Data Management		
Lesson 13	Hidden Items, Shortcuts, and File Archives.	377
Reference 13.1	Hidden Items.	377
Reference 13.2	Bundles and Packages.	381
Reference 13.3	File System Shortcuts.	383
Reference 13.4	File Archives.	388
Exercise 13.1	Navigate Hidden Items.	397
Lesson 14	System Resources.	401
Reference 14.1	OS X File Structure.	401
Reference 14.2	Font Resources and Font Book.	410

Exercise 14.1	Manage Font Resources.	414
Lesson 15	Metadata and Spotlight.	421
Reference 15.1	File System Metadata.	421
Reference 15.2	Spotlight Search.	427
Exercise 15.1	Examine File Metadata.	435
Lesson 16	Time Machine.	441
Reference 16.1	Time Machine Architecture.	441
Reference 16.2	Configuring Time Machine.	445
Reference 16.3	Restoring from Time Machine	452
Exercise 16.1	Configure Time Machine.	459
Exercise 16.2	Restore Using Time Machine.	465
 Applications and Processes		
Lesson 17	Application Installation.	475
Reference 17.1	The Mac App Store.	475
Reference 17.2	Application Environments.	490
Reference 17.3	Application Security.	495
Reference 17.4	Traditional Installation Methods.	501
Reference 17.5	Removing Installed Software.	504
Exercise 17.1	Use the Mac App Store.	505
Exercise 17.2	Use an Installer Package.	514
Exercise 17.3	Use a Drag-and-Drop Install.	517
Exercise 17.4	Remove Applications.	522
Lesson 18	Document Management.	527
Reference 18.1	Launch Services.	527
Reference 18.2	Quick Look.	532
Reference 18.3	Auto Save and Versions.	536
Reference 18.4	Document Locking.	543
Reference 18.5	iCloud Drive.	546

Reference 18.6	Automatic Resume.	552
Exercise 18.1	Use Alternate Applications.	555
Exercise 18.2	Use Auto Save and Versions.	560
Exercise 18.3	Manage Document Locking	564
Exercise 18.4	Store Documents in iCloud.	566
Exercise 18.5	Manage Automatic Behaviors.	573
Lesson 19	Application Management and Troubleshooting	577
Reference 19.1	Applications and Processes.	577
Reference 19.2	App Extensions	582
Reference 19.3	Monitoring Applications and Processes.	586
Reference 19.4	Application Troubleshooting.	591
Exercise 19.1	Force Applications to Quit.	603
Exercise 19.2	Troubleshoot Preferences.	610
Exercise 19.3	Examine Application Diagnostics.	615

Network Configuration

Lesson 20	Network Essentials.	621
Reference 20.1	Network Concepts.	622
Reference 20.2	Networks in Action.	627
Reference 20.3	Basic Network Configuration.	633
Exercise 20.1	Connect to a Wi-Fi Network.	639
Exercise 20.2	Monitor Network Connectivity	643
Lesson 21	Advanced Network Configuration.	647
Reference 21.1	Network Locations.	647
Reference 21.2	Network Interfaces and Protocols.	650
Reference 21.3	Network Services.	656
Reference 21.4	VPN Configuration	660
Reference 21.5	Advanced Network Configuration.	665
Exercise 21.1	Configure Network Locations.	676

Exercise 21.2	Configure Network Service Order	684
Exercise 21.3	Configure VPN Settings.	688
Exercise 21.4	Advanced Wi-Fi Configuration.	693
Lesson 22	Network Troubleshooting.	699
Reference 22.1	General Network Troubleshooting.	699
Reference 22.2	Network Utility.	707
Exercise 22.1	Network Troubleshooting.	713

Network Services

Lesson 23	Network Services.	727
Reference 23.1	Network Services Architecture.	727
Reference 23.2	Network Service Applications.	732
Reference 23.3	File-Sharing Protocols.	749
Reference 23.4	Connecting to File Shares.	751
Reference 23.5	Network Service Troubleshooting.	762
Exercise 23.1	Configure a Network Service Account.	768
Exercise 23.2	Use File-Sharing Services.	777
Exercise 23.3	Troubleshoot Network Services.	784
Lesson 24	Host Sharing and Personal Firewall.	791
Reference 24.1	Host-Sharing Services.	791
Reference 24.2	Screen Sharing.	796
Reference 24.3	AirDrop.	808
Reference 24.4	Personal Firewall.	814
Reference 24.5	Shared Service Troubleshooting.	819
Exercise 24.1	Use Host-Sharing Services.	821
Exercise 24.2	Configure the Personal Firewall.	828

System Management

Lesson 25	Peripherals and Drivers.	837
Reference 25.1	Peripheral Technologies.	837
Reference 25.2	Manage Bluetooth Devices.	844
Reference 25.3	Peripheral Troubleshooting.	848
Exercise 25.1	Examine Peripherals via System Information.	854
Lesson 26	Print and Scan.	857
Reference 26.1	Print System Architecture.	857
Reference 26.2	Print and Scan Configuration.	860
	Sharing Printers.	868
Reference 26.3	Managing Print Jobs.	870
Reference 26.4	Print System Troubleshooting.	879
Exercise 26.1	Configure Printing.	882
Exercise 26.2	Manage Printing.	887
Exercise 28.3	Troubleshoot the Printing System.	896
Lesson 27	System Troubleshooting.	899
Reference 27.1	System Initialization	899
Reference 27.2	User Session.	907
Reference 27.3	Sleep Modes, Logout, and Shutdown.	910
Reference 27.4	Startup Shortcuts.	916
Reference 27.5	System Initialization Troubleshooting	919
Reference 27.6	User Session Troubleshooting.	923
Exercise 27.1	Examine System Startup.	924
Exercise 27.2	Use Single-User Mode.	925
	Index.	931
Appendix A	Lesson Review Questions and Answers.	A-1
Appendix B	Additional Resources.	B-1

Bonus chapters mentioned in this eBook are available after the index.

See last page of this eBook for instructions on downloading your lesson files.

This page intentionally left blank

About This Guide

This guide serves as a tour of the breadth of functionality of OS X Yosemite and the best methods for effectively supporting users of OS X systems. It is intended for both self-paced learners and those participating in an instructor-led course. This guide is the curriculum for the official Apple training course Yosemite 101: OS X Support Essentials 10.10, a three-day, hands-on course that provides an in-depth exploration of how to troubleshoot on OS X Yosemite. This course is facilitated by an Apple Certified Trainer and is organized into multiple lessons, each containing instructor presentations followed by related student exercises.

The primary goal of this guide is to prepare help desk specialists, technical coordinators, service technicians, system administrators, and others who support Mac users to knowledgeably address customer concerns and questions. This goal includes providing learners with the ability to return a Mac computer running OS X back to normal operation using the proper utilities, resources, and troubleshooting techniques.

Whether you are an experienced system administrator or just want to dig deeper into OS X, you'll learn in-depth technical information and procedures used by Apple-certified IT professionals to install, configure, maintain, and diagnose Mac computers running OS X.

NOTE ► Unless otherwise specified, all references in this guide to OS X or OS X Yosemite refer to version 10.10, which was the most current version available at the time of writing. Due to subsequent updates, some screens, features, and procedures may be slightly different from those presented in these pages. When available, you can access updates to this guide on the Update tab for the book at www.peachpit.com/apts.osxyosemite#updates.

GOALS

- Explain how this guide is organized to facilitate learning
- Set up an environment for self-paced exercises
- Introduce Apple Training and Certification courses and exams

Learning Methodology

Each lesson in this guide is designed to help experienced users become experts who are able to support other OS X users by:

- ▶ Providing knowledge of how OS X works
- ▶ Showing how to use diagnostic and repair tools
- ▶ Explaining troubleshooting and repair procedures

For example, in Lesson 20 “Network Essentials”, you’ll learn basic networking concepts (knowledge). You’ll experience using network configuration and troubleshooting applications like Network preferences and Network Utility (tools). And you’ll explore methods for resolving network issues (procedures). In addition, each lesson includes troubleshooting techniques for dealing with common issues related to the topic at hand.

This guide assumes a basic level of familiarity with OS X at the user level. This guide does not cover basic usage of the system, but a good place to start is the Apple Mac Basics support site, www.apple.com/support/macbasics/. Again, it’s strongly suggested that you be comfortable using a Mac before you begin the exercises in this guide.

Lesson Structure

Each lesson in this guide contains a reference section followed by an exercise section.

NOTE ▶ “Note” resources, like this one, offer important information or help clarify a subject. For example, some of the exercises in this guide may be disruptive. Consequently, it’s recommended that you perform these exercises on an OS X computer that is not critical to your daily productivity.

The reference sections contain initial explanatory material teaching essential concepts. The exercise sections augment your understanding of concepts and develop your skills through step-by-step instruction for both self-paced learners and the hands-on portions of an instructor-led course.

TIP ▶ “Tip” resources, like this one, provide helpful hints, tricks, or shortcuts. For example, when discussing the process of downloading from the Mac App Store, you could be told how to check the progress of the download.

Throughout this guide you’ll find references to Apple Support articles. These articles can be found at the Apple Support website (www.apple.com/support/), a free online resource containing the very latest technical information for Apple products. We strongly encour-

age you to read the suggested documents and search the Apple Support website for answers to any problems you encounter.

MORE INFO ► The “More Info” resources, like this one, provide ancillary information. These resources are merely for your edification, and are not considered essential for the coursework.

Lesson files and bonus materials are available online when you redeem the access code supplied with your guide at www.peachpit.com/redeem. The “Lesson Review Questions & Answers” appendix recaps each lesson through a series of questions that reinforce the material you learned in the guide. You can refer to the lessons and various Apple resources, such as the Apple Support website and documentation, mentioned in the guide. Answers are also provided to confirm your understanding of the concepts. The “Additional Resources” appendix contains a list of relevant Apple Support articles and recommended documents related to the topic of each lesson. The “Updates & Errata” document contains updates and corrections to the guide.

Exercise Requirements

This guide is written so that both the self-paced learner and those attending an Apple Authorized Training Center or Apple Authorized Training Center for Education (AATC or AATCE) can complete most of the exercises using the same techniques. Those attending the Yosemite 101 course at an AATC or AATCE will have the appropriate exercise setup provided as part of the training experience. On the other hand, self-paced learners attempting these exercises will have to set up an appropriate environment using their own equipment.

NOTE ► Some of these exercises can be disruptive—for example, they may turn off network services temporarily—and some, if performed incorrectly, could result in data loss or damage to system files. Consequently, it’s recommended that you perform these exercises on an OS X computer that is not critical to your daily productivity. Apple Inc. and Peachpit Press are not responsible for any data loss or any damage to any equipment that occurs as a direct or indirect result of following the procedures described in this guide.

Mandatory Requirements

To perform the exercises in this guide, you must have some basic necessities:

- ▶ Mac computer meeting the requirements to run OS X Yosemite
- ▶ OS X Yosemite (“Exercise 1.2 Upgrade to OS X Yosemite” on page 30 includes instructions for downloading Yosemite if you do not already own it)
- ▶ A high-speed Internet connection
- ▶ Student Materials demonstration files, which can be obtained by redeeming the code provided with your guide (instructions to redeem the code and download are included in “Exercise 2.5 Download the Student Materials Independently” on page 76)

Optional Add-Ons

Most of these exercises assume access to one or more of the following additional resources (specific resources needed for each exercise are listed at the beginning of the exercise):

- ▶ An iCloud account. You can use an existing iCloud account or set up a new free account during the exercises.
- ▶ An Apple ID that can make purchases from the Mac App Store. You can use an existing account or set up a new account during the exercises. You do not have to enter a credit card or payment information to download free items.
- ▶ An erasable external USB, FireWire, or Thunderbolt disk with a capacity of at least 1 GB (or 8 GB for “Exercise 3.2 Create an OS X Install Disk” on page 99).
- ▶ An isolated network or subnet with an exercise-specific configuration. This can be facilitated with something as simple as a small network Wi-Fi router with multiple Ethernet ports. For example, the Apple AirPort Extreme (www.apple.com/airportextreme/) would be a good choice. Instructions for the general setup of an exercise network and specific instructions for the configuration of AirPort Extreme are available with the lesson files and bonus material when you redeem the access code provided with this guide at www.peachpit.com/redeem.
- ▶ A Wi-Fi interface in your computer and access to at least two Wi-Fi networks (at least one of which is visible).
- ▶ An additional Mac system running OS X Yosemite.
- ▶ A FireWire or Thunderbolt cable (as appropriate) to connect the two computers.

- Optionally, the additional Mac system can have OS X Server installed and set up with an exercise-specific configuration. Any Mac that can run OS X Yosemite can run OS X Server after purchasing it from the Mac App Store for \$19.99. Specific instructions for configuring an OS X Server for exercise use are available with the lesson files and bonus material when you redeem the access code provided with this guide at www.peachpit.com/redeem.
- If your computer has a Retina display, a magnifying glass may be helpful for “Exercise 27.2 Use Single-User Mode” on page 925.

If you lack the equipment necessary to complete a given exercise, you are still encouraged to read the step-by-step instructions and examine the screenshots to understand the procedures demonstrated.

Exercise Order

The exercises in this guide are designed to be relatively independent of each other, so that you can complete them out of order or skip exercises. However, there are some exercises you must perform in the correct order:

- If your computer is not running OS X Yosemite yet, you must perform the appropriate exercises in Lesson 1 “Install OS X Yosemite” to upgrade or reinstall it.
- You must perform the appropriate exercises in Lesson 2 “Setup and Configuration” to set up your computer for any of the later exercises.
- “Exercise 5.1 Manage User Accounts” on page 145 and “Exercise 6.1 Restore a Deleted User Account” on page 166 create user accounts that many later exercises depend on.

Some exercises also have specific dependencies on other exercises; these will be listed as prerequisites at the beginning of the exercise.

Apple Training and Certification

The Apple Training and Certification program is designed to keep you at the forefront of Apple technology. Certification creates a benchmark to demonstrate your proficiency in specific Apple technologies and gives you a competitive edge in today’s evolving job market.

Certification exams are delivered at Apple Authorized Training Centers around the world.

Reading this guide or attending the Yosemite 101 course will help prepare you to pass the OS X Support Essentials 10.10 Exam and become an Apple Certified Support Professional (ACSP) and/or Apple Certified Technical Coordinator (ACTC).

- ▶ ACSP certification verifies an understanding of OS X core functionality and an ability to configure key services, perform basic troubleshooting, and support multiple users with essential OS X capabilities.
- ▶ ACSP certification is designed for the help desk professional, technical coordinator, or power user who supports OS X users, manages networks, or provides technical support for the Mac.
- ▶ Students earn ACSP certification by passing the OS X Support Essentials 10.10 Exam. Visit training.apple.com/certification/osxyosemite to review the OS X Support Essentials Exam Prep Guide.
- ▶ ACTC certification verifies a foundation in OS X and OS X Server core functionality and an ability to configure key services and perform basic troubleshooting. ACTC certification is intended for OS X technical coordinators and entry-level system administrators who maintain small-to-medium networks of computers using OS X Server.
- ▶ Students earn ACTC certification by passing both the OS X Support Essentials 10.10 Exam and OS X Server Essentials 10.10 Exam. (To prepare for the latter exam, attend the Yosemite 201 course or read *Apple Pro Training Series: OS X Server Essentials 10.10*.)

MORE INFO ▶ To read OS X Technical White Papers and learn more about all Apple certifications, visit <http://training.apple.com>.

NOTE ▶ Although all the questions in the OS X Support Essentials 10.10 Exam are based on material in this guide, nothing can substitute for time spent learning the technology. After you read the book and/or take the class, spend time increasing your familiarity with OS X on your own to ensure your success on the certification exam.

This page intentionally left blank

Lesson 4

OS X Software Updates

Adding new capabilities is the very reason “software” exists. It’s expected that you will add new applications to increase the capabilities of your Mac and, as products are refined, new software updates as well. In this lesson, you will configure and use the OS X software update technology, which is an automatic method to keep all your Apple-sourced software up to date. You will also explore an alternative to automatic software updates: manually downloading and installing software update packages.

GOALS

- ▶ Configure automatic software update settings
- ▶ Automatically update Apple-sourced software
- ▶ Manually update Apple software

Reference 4.1

Automatic Software Updates

Keeping current with software updates is an important part of maintaining a healthy computer. For that reason, OS X includes an easy-to-use software update mechanism that automatically checks the Apple servers via the Internet to make sure you’re running the latest Apple-sourced software. Automatic software update checking is enabled by default as soon as you start using your Mac.

Both automatic and manual software updates require an Internet connection to download update installers. The automatic software update mechanism checks only for updates of currently installed Apple-sourced software, including software included with OS X and any software purchased from the Mac App Store.

Installing Mac App Store software updates requires appropriate Apple ID authentication. If you have not previously signed in to the Mac App Store from the computer you’re working on, you will be required to authenticate with an Apple ID. If a Mac App Store item was installed with a different Apple ID, and you wish to update the item, you must authenticate with the Apple ID used to purchase the original item.

NOTE ▶ Some software updates require that you also agree to a new Apple Software License Agreement.

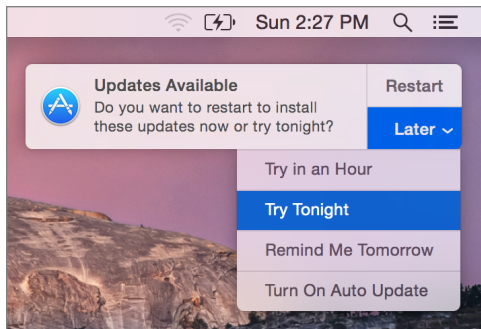
NOTE ► In OS X Yosemite, both administrative and standard users are allowed to install system software updates via the Mac App Store. If your organization restricts this type of activity for nonadministrative users, you can disable automatic software updates, as covered in “Automatic Software Update Preferences” on page 112 later in this lesson.

Automatic Software Update Behavior

OS X Yosemite features unified software updates via integration with the Mac App Store, meaning that all software you have installed from the Mac App Store, including OS X itself and applications created by either Apple or third parties, are updated from a single location. Further, software update is integrated with the Notification Center to let you know as soon as new updates are available for installation.

MORE INFO ► Although it’s covered here in terms of its update abilities, using the Mac App Store to install new applications is discussed further in Lesson 17 “Application Installation”.

Assuming the default settings, updates for important system files and security software are always automatically downloaded and installed. On the other hand, by default, most OS X system and Mac App Store updates are automatically downloaded in the background but not installed. In this case, when updates are ready to be installed, a Mac App Store notification displays, stating “Updates Available.”

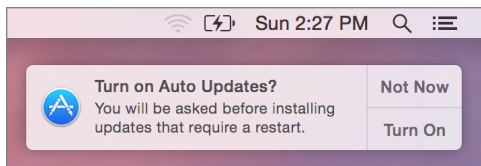


From this notification you can click Restart, which will immediately install the updates, or click Later to display a menu enabling you to defer the update until a more convenient time. This is especially useful because some system updates prevent you from using the computer while the installation completes, in addition to requiring a restart.

The last item in this menu allows you to enable automatic updates for Mac App Store items. This option is not enabled by default on new OS X systems.

TIP When software updates are available, a number badge (indicating the number of available updates) will appear next to the Mac App Store icon, the Mac App Store toolbar Updates button, and the App Store selection in the Apple menu. Also, when you try to restart or shut down the computer, you may be reminded to install available updates.

Again, by default on OS X, Mac App Store updates will not automatically install. You may, however, receive an additional notification to “Turn on Auto Updates.”



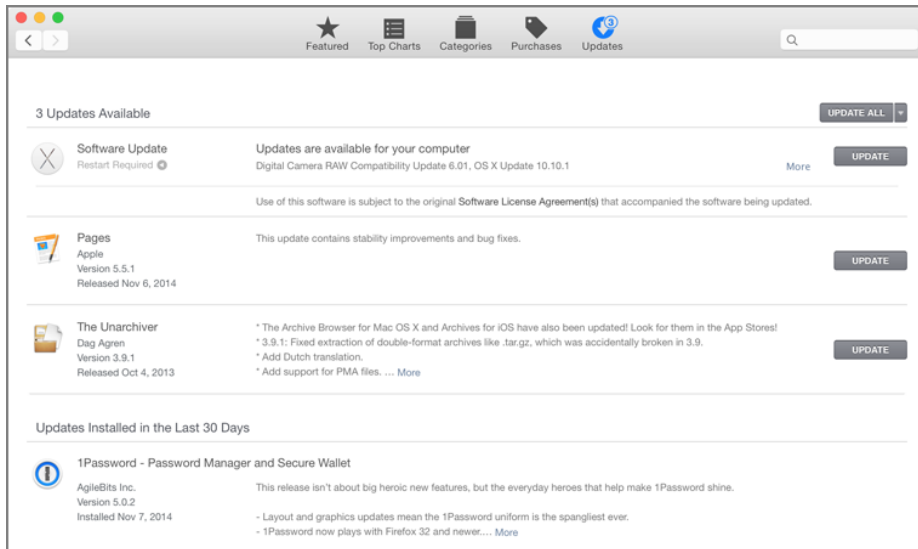
Clicking the Turn On button from this notification enables automatic installation for Mac App Store items. As stated previously, important system and security software are always updated.

After deferring updates, when you are ready to install updates or want to manually check for new updates, you can do so at any time using the following methods:

- ▶ In the About This Mac window, click the Software Update button.
- ▶ In the App Store preferences, found in the System Preferences application, click the Check Now button.
- ▶ In the toolbar of the Mac App Store, click the Updates button.

App Store Update Details

When the Mac App Store opens to show you new updates, each update is listed with information about the software update contents. The information provided includes the update name, version, and a description. Updates that require a system restart include a notice below the update's name.



As in the screenshot above, the Updates list is split into three sections:

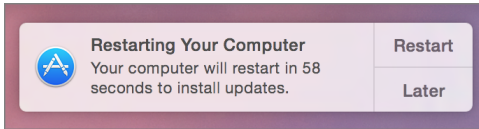
- ▶ At the very top are OS X software updates—This section contains only updates for OS X itself or updates for Apple software installed outside of the Mac App Store. (This is similar to the software update mechanism available in earlier versions of OS X.) To simplify the view, multiple software updates in this top section are hidden. You can see all the updates and their descriptions by clicking the More link next to the Update button in the top section.
- ▶ In the middle are individual Mac App Store updates—Items purchased from the Mac App Store, aside from OS X itself, always appear as separate update items. In this screenshot, both Pages and The Unarchiver require updates. Again, you can see more information about any individual software update by clicking the More link in the description.
- ▶ At the very bottom are previously installed updates—This section lists only updates installed by this user from the Mac App Store within the last 30 days. It does not list updates installed outside of the Mac App Store or by other users. A complete list of installations can be viewed using System Information, as covered in “Reference 4.3 Installation History” on page 117.

NOTE ► If you don't believe the items listed in the Updates view to be accurate, you can refresh available updates by choosing Store > Reload Page from the menu bar or by pressing Command-R.

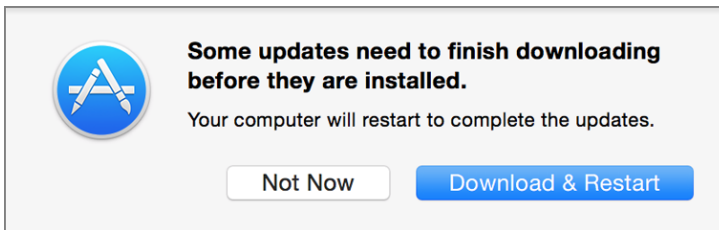
NOTE ► Administrators can configure a custom Software Update service to help them manage updates. If this service is configured, the Software Update area shows the name of the server and lists the available updates. Although this process is not covered in this guide, you can find out more about it in the companion guide, *OS X Server Essentials 10.10: Using and Supporting OS X Server on Yosemite*.

To install a single update, simply click the corresponding Update button, or click the Update All button to install all available updates. If none of the updates requires a restart for installation, the software automatically installs without any further interaction.

However, if any of the updates requires a restart after the install process, you are given the option to restart or again defer the installation. If the update items have already been downloaded, a notification displays.



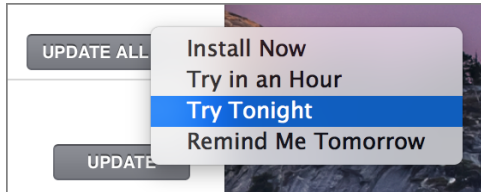
If any of the update items hasn't been downloaded, a different dialog appears so that you can confirm you want to download the items and then restart.



In either case, when you select a restart option, the system verifies the downloaded updates, logs out the current user, installs the updates, restarts the system, and then automatically logs back in to the user account that initiated the updates.

You can, of course, choose the Not Now button, but you will eventually have to restart to take advantage of the new software. Alternatively, if updates requiring a restart are already downloaded, you can choose an automatic installation option from the Later pop-up

menu in the restart notification (shown previously) or from the pop-up menu to the right of the Update All button in the Mac App Store. This allows you to automatically defer the software installation and system restart to a time when it's more convenient.



iLife and iWork Updates

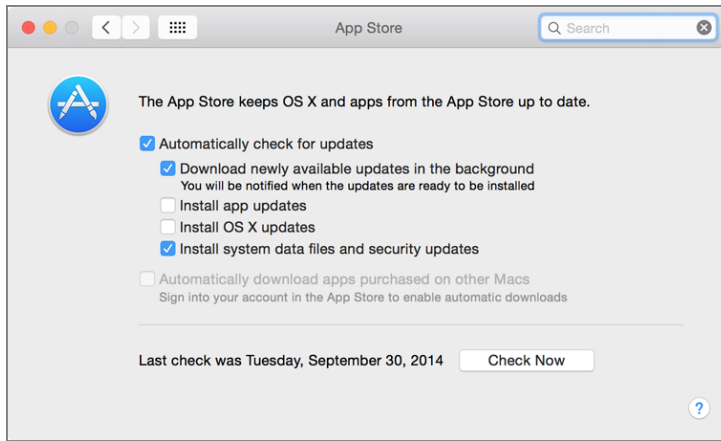
Although most new Mac systems come with the iLife and iWork apps installed, these apps will probably need to be updated. This requires that a user “adopt” or “accept” the free iLife and iWork software licenses that came bundled with the Mac by first signing in to the Mac App Store with his or her Apple ID. For more information about accepting these applications, see Apple Support article HT203658, “Alerts may occur when accepting bundled applications from the Mac App Store.”

Older Mac systems upgraded to OS X Yosemite that also have a previous version of the iLife and iWork apps can upgrade, for free, to the latest Mac App Store versions. The software update process automatically detects these updates, but you have to authenticate with an Apple ID to accept the licenses for the new versions. For more information about updating these applications, see Apple Support article HT201064, “Update to newer versions of Apple apps on your Mac using the Mac App Store.”

TIP Once a user’s Apple ID has been used to accept the license for an application, that user can install the application on any other Mac by signing in to the Mac App Store. In other words, a user can accept the iLife and iWork applications from a new Mac and then sign in on an older Mac to install the latest versions of the applications.

Automatic Software Update Preferences

App Store preferences, accessed via the System Preferences application, enable you to control the software update automation. Changes made in App Store preferences apply systemwide, to all users.



From the App Store preferences, you can enable or disable the following options:

- ▶ **Automatically check for updates**—When this option is enabled, the system checks for updates once a day. Note that “check” means that only a small amount of Internet bandwidth is needed to determine if updates are needed.
- ▶ **Download newly available updates in the background**—In this case, the update system may need to use a large amount of bandwidth to download updates. It’s not uncommon for OS X system updates to weigh in at over 1 GB. Also, because this option will automatically download updates for applications purchased from the Mac App Store, systems with more applications will likely use more bandwidth.
- ▶ **Install app updates**—This option is not enabled by default, but, as covered previously, the system prompts you to enable this option via a notification. Once it’s enabled, you are notified after new Mac App Store items are automatically updated or if you need to quit the application to apply the update. Importantly, automatic Mac App Store updates do not require a system restart.
- ▶ **Install OS X updates**—This option is not enabled by default, but, as covered previously, you can also enable this option via a notification. Once it is enabled, you will be notified after new OS X system items are automatically updated, as long as they don’t require a restart. Again, any OS X updates that require a system restart allow you restart immediately or wait until later.
- ▶ **Install system data files and security updates**—If Apple deems these updates important enough that they should be always installed, it’s a best practice to leave this option

enabled. Keep in mind, though, that some system and security updates require that the system be restarted.

- **Automatically download apps purchased on other Macs**—This feature is disabled by default. If this feature is enabled, when you are signed in to the Mac App Store with an Apple ID, new installations made from another Mac using the same Apple ID will automatically install on this Mac as well. This is handy for those who use multiple Mac systems.

In App Store preferences, you can also click the Check Now button to manually open the Updates section of the Mac App Store.

MORE INFO ► Standard users can be individually restricted using parental controls, which include the ability to block access to the Mac App Store. You can find out more about parental controls in Lesson 5 “User Accounts” and more about the Mac App Store in Lesson 17 “Application Installation”.

Reference 4.2

Manual Software Updates

Before the Mac App Store or automatic software updates, all Mac software was acquired and installed manually. Fortunately, OS X has always featured relatively simple software installation. In fact, many applications require only that the user copy a single application file to the local Applications folder. On the other hand, more complex software may require multiple resources to be placed in a variety of specific locations on your Mac.

A prime example of a complicated software installation is any system software update. In some cases it may be more convenient to manually install an update, as opposed to using automatic software update via the Mac App Store. For example, perhaps you need to install a particularly large software update for a system with limited Internet bandwidth. It may be better to manually download the update to a portable flash disk at a location with more bandwidth, and then use the flash disk to apply the update to the Mac that needs it. An experienced OS X support specialist will always have an external disk with the most common large updates handy for just such an occasion.

TIP ► You have the option of manually downloading and installing Apple software updates. You can find all Apple updates at <http://support.apple.com/downloads/>. After you download the updates, use the Installer application to apply them.

Installer Application

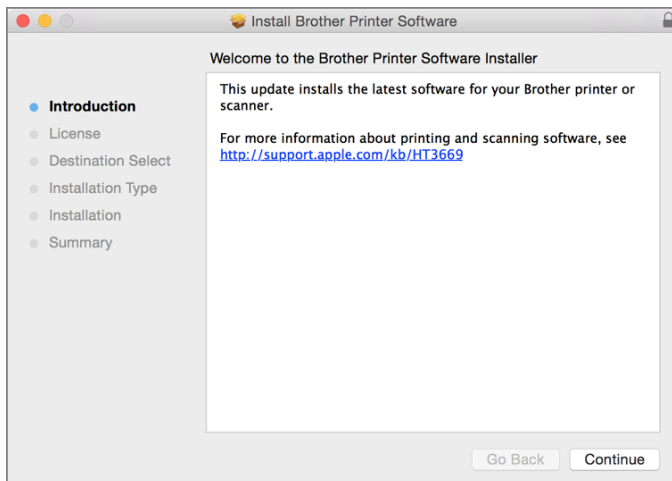
The Installer application makes complicated application installations simple. Often, software developers will create an “installer package” with all the instructions and resources necessary for the Installer application to set up the new software on your system.

MORE INFO ► Though it’s covered briefly here, installing new applications is discussed further in Lesson 17 “Application Installation”.



BrotherPrinterDrivers.pkg

Double-clicking one of these software installer packages opens the Installer application and begins the installation process. Much like the OS X installation process, the Installer application guides you through the steps necessary to install or update software. This may include agreeing to software licenses, selecting a destination, selecting package options, and authenticating as an administrative user.



Unlike the Mac App Store, the Installer application requires administrative access to install many items. This security mechanism is in place because anyone is allowed to make and distribute traditional OS X installer packages, including those who may have nefarious goals. Another mechanism in OS X, known as Gatekeeper, also provides an additional

level of protection against unknown installation packages and software. You can find out more about Gatekeeper in “Gatekeeper” on page 498.

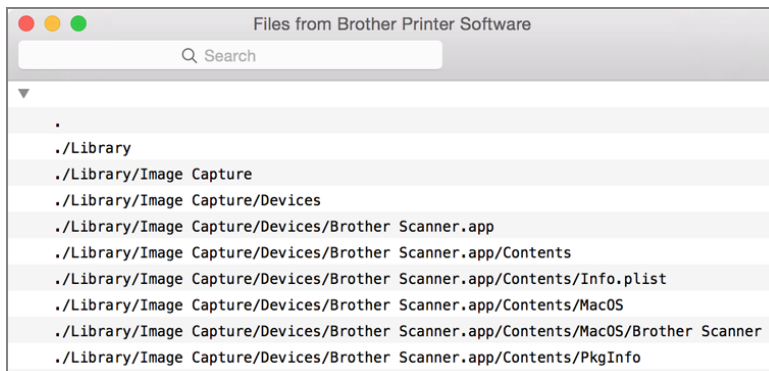
NOTE ► Third-party software developers may choose to use a proprietary, non-Apple installer for their product. These installers behave differently from the Apple Installer.

Advanced Installer Features

If you’re curious about what an installation package is actually doing to your Mac, you have two ways to find out. First, you can view the Installer log at any time while using the Installer application by choosing Window > Installer Log or pressing Command-L. The Installer log is a live view of any progress or errors reported during the installation process.

TIP ► After installation, you can access the Installer log from the /Applications/Utilities/Console application. Once Console is open, select /var/log/install.log.

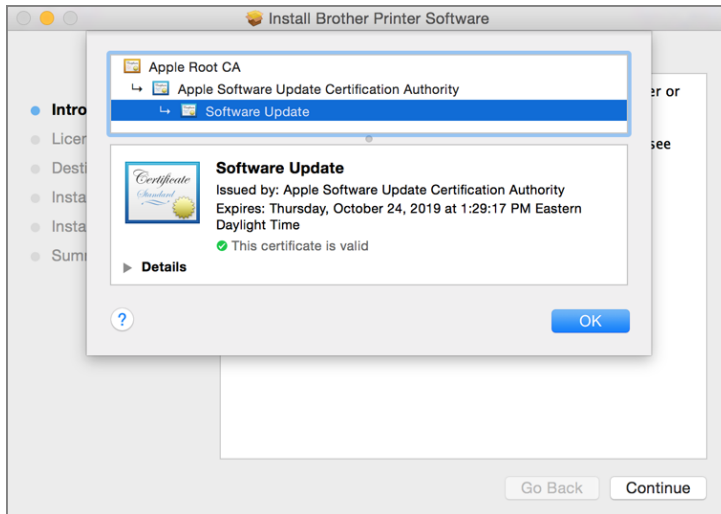
The second method allows you to inspect the content of an installer package before installation. After opening an installer package in the Installer application and passing the initial welcome and license screens, you can preview the list of files to be installed by choosing File > Show Files or pressing Command-I.



TIP ► Save time looking for what you need by using the search field in the toolbar when examining the Installer log or file list.

Apple has endeavored to increase the security and reliability of software installation packages by supporting signed packages. These packages contain special code used to validate the authenticity and completeness of the software during installation. This makes it nearly impossible for malicious parties to insert illegitimate files in trusted installation packages.

You can recognize a signed installer package by the small lock icon in the far right of the installer window title bar. Clicking this icon displays details about the signed package, including its certificate status.

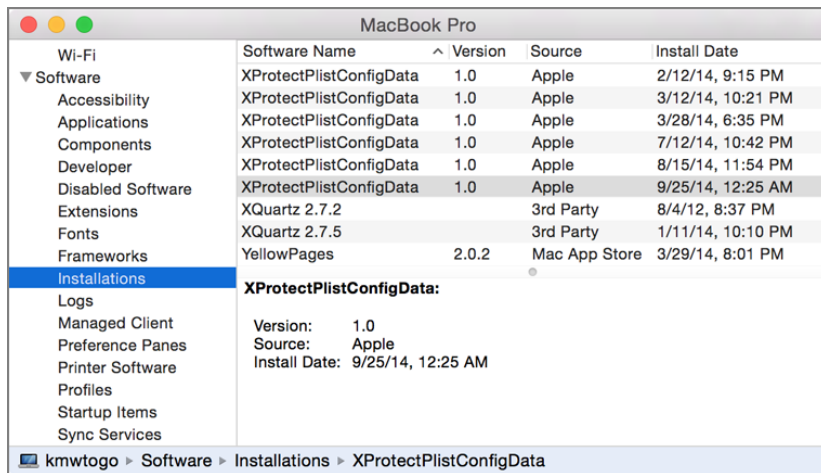


Reference 4.3 Installation History

The automatic software update mechanism in OS X makes it incredibly easy for the average user to maintain an up-to-date system—so much so that the user often isn't even aware of how many updates or installations have been applied. Yet from a support perspective, it's important to know exactly which installations have taken place.

As you may have seen, the update screen in the Mac App Store shows recently installed updates. However, this list of updates doesn't show the complete history of all installations, but only recent installations from the Mac App Store, and only for the currently logged-in user account.

Fortunately, the System Information application features a complete installation history report. To view this history, open `/Applications/Utilities/System Information`, and then select the Installations item in the left column. This interface shows all software installed via the Mac App Store or the Installer application, including both new and update installations from either Apple or third parties. You can see the name, version, acquisition source, and date installed.



Exercise 4.1

Manually Install Software Updates in a Classroom

Prerequisites

- This exercise is for students performing these exercises in a classroom environment. If you are following these exercises independently, perform “Exercise 4.2 Manually Install Software Updates Independently” on page 119 instead.
- You must have created the Local Admin account (“Exercise 2.1 Configure a New OS X System for Exercises” on page 60 or “Exercise 2.2 Configure an Existing OS X System for Exercises” on page 63).

If your instructor has chosen to download any software updates and distribute them as part of the student materials, you can follow these steps to install them. Your instructor will tell you whether you need to do this.

Install Updates from StudentMaterials

- 1 In the Finder, open the Lesson4 folder inside the StudentMaterials folder. Remember that you created a shortcut to the StudentMaterials folder in your Dock.

- 2 For each software update in this folder (note: your instructor may additionally specify an order in which they should be installed), do the following:
 - ▶ Open the disk image file. After a short time, a new volume mounts. It contains the update package.
 - ▶ Open the update package. The installer opens and walks you through the installation process.
 - ▶ Continue through the installer prompts, and agree to the license agreement if required.
 - ▶ When prompted, authenticate as Local Admin again (password: **ladminpw**, or whatever you chose when you created the account). Installing software updates manually requires administrative privileges.
 - ▶ When each update has installed, click Close or Restart as appropriate.
- 3 Repeat these steps until all the updates have been installed.
- 4 If you did not restart, eject the disk image or disk images before proceeding. You can do this by Control-clicking in the background of the image's window and choosing Eject from the shortcut menu.

Exercise 4.2

Manually Install Software Updates Independently

▶ Prerequisites

- ▶ This exercise is for students performing these exercises independently. If you are performing these exercises in a classroom environment, perform “Exercise 4.1 Manually Install Software Updates in a Classroom ” on page 118 instead.
- ▶ You must have created the Local Admin account (“Exercise 2.1 Configure a New OS X System for Exercises” on page 60 or “Exercise 2.2 Configure an Existing OS X System for Exercises” on page 63).

If you want to keep a copy of an update or want to install additional software (such as printer drivers) available for download from the Apple Support site, this exercise shows you how to download and install updates manually.

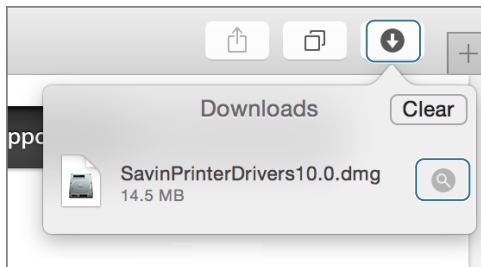
Download an Update from the Internet

- 1 Open Safari.
- 2 Navigate to <http://support.apple.com/downloads/>.

This page shows the featured updates Apple has made available for download. If you do not see the update you want, click “Browse by Product,” and then either browse for it by product category or enter its name in the Search Downloads field.

The following screenshots use the Savin Printer Drivers package as an example, but you can choose any update for which your computer is eligible.

- 3 When you find the update you want to install, click its Download button.
- 4 Wait for the download to complete. Note that a progress indicator in the Safari Downloads button, near the top right of the window, shows the status of the download.
- 5 Click the Downloads (down-arrow icon) button near the top right of the window.
- 6 Click the View (magnifying-glass icon) button next to the update you downloaded.

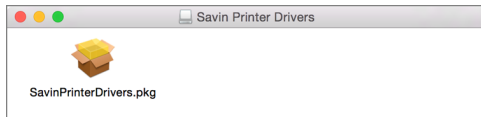


Your Downloads folder opens in the Finder, and the disk image containing the update is selected.

Install the Update

- 1 Open the disk image file.

The disk image mounts, and you will see the installer package it contains.



- 2 Open the installer package.
The installer opens and walks you through the installation process.
- 3 Continue through the installer prompts, and agree to the license agreement if required.
- 4 When prompted, authenticate as Local Admin (password: **ladminpw**, or whatever you chose when you created the account).
Manual software updates usually require administrative privileges to install.
- 5 After the update installs, click Close or Restart as appropriate.
- 6 If you did not restart, eject the disk image before proceeding. You can do this by Control-clicking in the background of the image's window and choosing Eject from the shortcut menu or by using the Eject button next to the disk image's name in the Finder sidebar.

Exercise 4.3

Use Automatic Software Update

► Prerequisite

- You must have created the Local Admin account (“Exercise 2.1 Configure a New OS X System for Exercises” on page 60 or “Exercise 2.2 Configure an Existing OS X System for Exercises” on page 63).

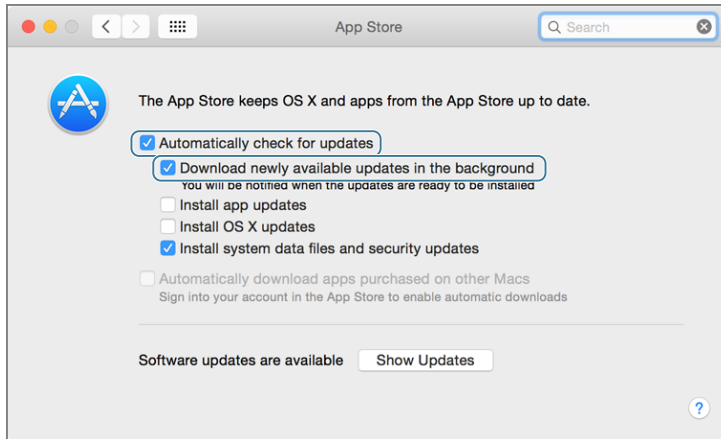
In this exercise, you will use the automatic update feature of the Mac App Store to check for, download, and install updates for OS X. You will also see how to view installed software and updates.

Check Your App Store Preferences

1 From the Apple menu, choose System Preferences.

2 Select the App Store pane.

Notice that by default the system will automatically download new updates in the background and then notify you when they are ready.



3 Quit System Preferences.

Update Your Software

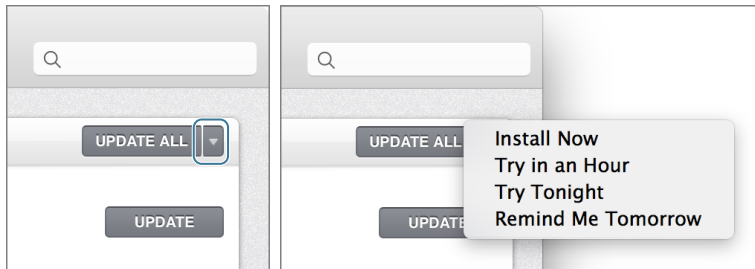
1 From the Apple menu, choose App Store.

2 In the App Store toolbar, click Updates.

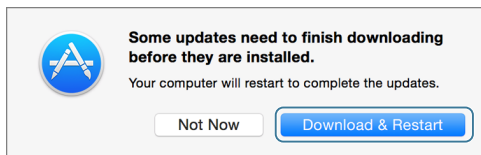
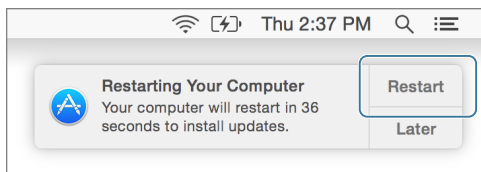
The App Store checks for new software.

3 If you see a message that says “No Updates Available,” your computer is up to date. Skip the rest of this section and proceed to ““Check Installed Updates” on page 124”.

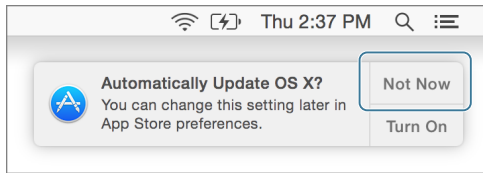
4 Click the small triangle next to the Update All button. A pop-up menu appears, with options to install updates later.



- 5 Click elsewhere to dismiss the pop-up menu.
- 6 Decide which updates you want to install on your computer.
- 7 If there is more than one update, you can click More to see a detailed list. Click the Update buttons for the updates you want to install, or click Update All if you want all available updates.
- 8 If any of the updates are subject to license agreements, you are prompted to agree to them. Read the agreements, and if they are acceptable, click Agree.
- 9 If you are prompted to restart your computer, click Restart or Download & Restart. Then, log back in to the Local Admin account, and check for more updates by repeating this exercise.



- 10 If a dialog appears asking if you want to automatically update OS X, click Not Now to keep your current update preference.



- 11 When all updates have been installed, quit the App Store.

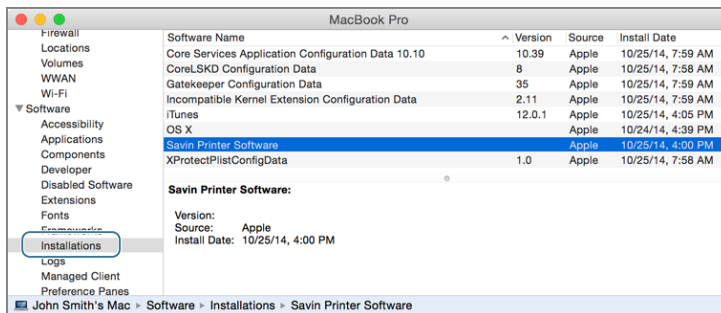
Check Installed Updates

- 1 Hold down the Option key while you choose System Information from the Apple menu.

System Information opens and displays its report.

- 2 In the Software section of the sidebar, select Installations.

A list of installed software and updates appears, including the updates you just installed. You can select specific updates from the list to get more information about them.



- 3 Quit System Information.

Index

Symbols

32-bit mode

- 64-bit mode compared with, 580
- opening application in, 608
- simultaneous 32-bit and 64-bit support, 579

64-bit mode

- 32-bit mode compared with, 580
- kernel extensions, 852
- simultaneous 32-bit and 64-bit support, 579

6to4

- OS X support for virtual network services, 654

802.11 Wi-Fi standard, 634

802.1X configuration, 671

A

About This Mac window

- in System Information, 57-58
- reviewing repair and warranty coverage for computer, 83-85
- viewing disk space usage, 454

Access control entries (ACEs)

- Drop Box folder and, 322
- permissions and, 316

Access control lists (ACLs)

- defining multiple permissions for an item, 328
- overview of, 315
- resetting permissions, 352

Accessibility settings

- security and privacy settings, 194

Account name

- user account attributes, 137

Account passwords

- types of passwords, 175

Accounts

- administrator (see Administrator account)

configuring network service

- accounts, 768

creating admin account, 63-65

- setting up computer account, 48-50, 62
- setting up new network account, 770

testing new network accounts, 773

- user (see User accounts)
- viewing existing network accounts, 768

ACEs (see Access control entries (ACEs))

ACLs (see Access control lists (ACLs))

Action menu

- app extension uses and benefits, 583

Activity Monitor

- forcible quit via, 593, 605, 614
- monitoring processes via, 587-591
- opening app in 32-bit mode, 608
- viewing launchd hierarchy, 906
- viewing processes, 612
- viewing system processes and usage, 609

Ad hoc messaging, 749

Add Printer window

- manually configuring printers, 862

Address Book (see Contacts application)

Address Resolution Protocol (ARP) resolving MAC addresses to IP addresses, 627

Admin group

- administrative accounts as members of, 129

Administrator account

- creating, 63-65
- creating new, 929

deleting user accounts, 159

- login with Apple ID, 133

overview of, 129

- resetting user passwords as administrator, 206-209

Adobe PDF (see PDF (Portable Document Format))

Advanced network configuration

- 802.1X configuration, 671
- adding network to Wi-Fi preferred list, 696

clearing Wi-Fi preferred network list, 695

- creating Wi-Fi-only locations, 693

manual Ethernet configuration, 675

- manual TCP/IP configuration, 665-668

NetBIOS and WINS , 671-673

- network proxy services, 673-675
- overview of, 665

testing Wi-Fi preferred network order, 697

- Wi-Fi configuration, 669-670, 693

AFP (Apple Filing Protocol)

- manually connecting to, 755
- manually connecting to AFP share, 782
- manually connecting to file services, 755
- OS X supported file service protocols, 750

Agents

- process types, 578

AirDisk

- indexing AirDisk volumes, 429

AirDrop

- architecture, 808
- discovery issues, 812
- overview of, 808
- using, 810

- Wi-Fi sharing feature, 638
- AirPrint, 861
- Alias names
 - user account attributes, 137
- Aliases
 - comparing types of file system shortcuts, 384
 - managing, 387-388
- Analog modems
 - OS X supported network protocols, 655
- App extensions
 - architecture of, 582
 - managing, 583
 - overview of, 582
- App Store
 - accessing software updates, 12
 - account management, 481
 - acquiring the OS X Installer, 17
 - authentication requirement, 107
 - automatic updates, 108-109, 112
 - browsing, 477
 - checking System Preferences for, 122
 - code signing and, 496
 - creating new Apple ID, 483, 510
 - downloading Installer from, 30, 99
 - examining, 512
 - Gatekeeper settings, 499
 - iCloud Family Sharing and, 484
 - installing Apple ID, 481
 - installing apps from, 479-480
 - limiting access to, 488
 - managing iCloud Family Sharing, 484-486
 - managing purchases, 486-487
 - overview of, 475
 - parental control management options, 139
 - reinstalling application from, 524
 - removing installed application with Launchpad, 523
 - removing software, 504
 - requirements, 476
 - searching, 478
 - selecting app for purchase, 505-511
 - software updates from, 122-124
 - updates, 487
 - updates list, 109-112
 - updating Apple ID, 482
 - updating software, 503
 - verifying and managing Apple ID, 483
- Apple Filing Protocol (see AFP (Apple Filing Protocol))
- Apple Hardware Test
 - startup from, 917
 - testing for hardware failure, 348
- Apple IDs
 - authentication, 46-47
 - changing local account passwords, 177-179
 - configuring FileVault recovery, 289
 - creating new, 483, 510
 - FileVault recovery and, 295
 - iCloud Family Sharing and, 485
 - installing, 481
 - installing from App Store and, 479, 508
 - installing software updates and, 107
 - logging into new account, 133, 149
 - managing App Store accounts, 481
 - managing App Store purchases, 486
 - purchasing apps from App Store, 509
 - resetting passwords, 183
 - resetting passwords and, 184, 295
 - setting up computer account, 48-50
 - updating, 482
 - user names and passwords and, 176
 - verifying and managing, 483
- Apple Partition Map (APM)
 - partitioning options, 247
- Apple Privacy Policy, 431
- Apple Software Update (see Software updates)
- AppleDouble file format, 426
- troubleshooting file-sharing, 767
- AppleTalk
 - network printers, 862
- Application installation
 - App Store account management, 481
- App Store and, 475
- App Store requirements, 476
- App Store updates, 487
- application environments and, 490
- browsing App Store, 477
- copying application to Applications folder, 518
- creating new Apple ID, 483
- drag-and-drop, 501-502, 517
- examining App Store, 512
- iCloud Family Sharing, 484-486
- installation packages, 502, 514
- installing Apple ID, 481
- installing from App Store, 479-480
- installing with installer package, 514-517
- Java applications, 491-493
- legacy Mac applications, 491
- limiting access to App Store, 488
- managing purchases, 486-487
- native OS X applications, 490
- open source software, 494
- overview of, 475
- reinstalling from App Store, 524
- removing applications in Finder, 525
- removing applications in Launchpad, 523
- removing applications with an uninstaller, 525
- removing installed software, 504
- searching App Store, 478
- security of (see Application security)
- selecting app from App Store, 505-511
- testing app, 512
- traditional methods, 501
- UNIX applications, 491
- updating Apple ID, 482
- updating installed software, 503
- viewing and managing Apple ID, 483
- viewing installed applications, 522
- X Window System applications, 493
- Application registration
 - identifying file type, 529
- Application security

- bypassing Gatekeeper temporarily, 500
- code signing and, 496
- drag-and-drop installation and, 501
- Gatekeeper system, 498-500
 - overview of, 495
 - process security, 495
 - quarantining files, 497-498
 - sandboxing and, 496
 - testing Gatekeeper settings, 519-522
- Application Support
 - types of system resources, 403
- Applications
 - 64-bit vs. 32-bit, 580-582
 - app extension architecture, 582
 - application group containers, 408
 - checking compatibility during upgrade, 23-28
 - creating and locating preview preferences, 610
 - creating custom search query, 616
 - diagnostic reports, 594
 - diagnostics, 615
 - disabling/restoring preferences, 612
 - forcibly quitting, 593, 603
 - forcibly quitting using Force Quit window, 604
 - forcibly quitting via Activity Monitor, 605-608
 - forcibly quitting via Dock, 603
 - general troubleshooting, 591
 - home folder content, 159
 - in OS X file structure, 402
 - installer packages, 115
 - installing/removing (see Application installation)
 - managing, 577
 - managing app extensions, 583
 - managing corrupted preferences, 613
 - managing memory, 579
 - monitoring processes via Activity Monitor, 587-591
 - monitoring via System Information, 586
 - Notification Center Today view, 585-586
 - opening in 32-bit mode, 608
 - parental control management
 - options, 139
 - peripherals supported by, 852
 - preference troubleshooting, 597-599, 610
 - process features, 578
 - process performance features, 578
 - process types, 578
 - processes and, 577
 - removing, 522
 - resolving corrupted preferences, 599
 - resource contention issues in
 - fast user switching, 142
 - resource troubleshooting, 602
 - sandboxing, 406-408
 - securing (see Application security)
 - standards supported by OS X, 5
 - troubleshooting network applications, 765
 - verifying compatibility during upgrade, 10
 - viewing and editing preferences, 600
 - viewing diagnostic reports, 615
 - viewing diagnostics via Console, 595
 - viewing system processes and usage, 609
- Architecture
 - Auto Save and Versions, 536
 - network services, 727
 - Time Machine, 441
- Archive Utility
 - in Finder, 391
- Archives
 - comparing types of, 389
 - creating disk image archive, 395-396
 - creating empty disk images, 393-394
 - creating zip archives, 389-390
 - disk images, 392
 - expanding zip archives, 391
 - installing drag-and-drop items, 502
 - mounting disk images, 392
 - overview of, 388
 - packages and, 381
 - zip archives, 389
- ARD (Apple Remote Desktop)
 - enabling remote management, 806-807
 - options for screen sharing, 799
 - OS X sharing services, 795
 - screen sharing (see Screen sharing)
- ATA
 - for internal disks, 355
- Attributes
 - extended, 422
 - file type and, 528
 - user account, 135-137
- Audio
 - OS X device classes, 850
 - previewing with Quick Look, 535
- Authentication
 - 802.1X, 671
 - Apple ID and (see Apple IDs)
 - automatic authentication of file services, 752
 - FileVault authentication screen, 304
 - Local Admin account, 151
 - manual authentication of file services, 753
 - modifying user accounts and, 172
 - screen sharing and, 801
 - types of keychain files, 220
 - VPN configuration, 662
 - Wi-Fi, 635
- Authorization
 - iCloud devices, 232
- Auto Save and Versions
 - architecture, 536
 - disabling Auto Save, 554
 - duplicate and Save As, 539-541
 - experimenting with Auto Save, 561
 - overview of, 536
 - turning off Auto Save, 576
 - using Auto Save, 537-539
 - using versions, 541-543
 - working with multiple versions, 562
- AutoFill system
 - Safari, 223
- Automatic Resume
 - overview of, 552
 - resuming after logout, 552
 - resuming after quit, 553
 - starting up in previous state, 911

- Automatic updates
 - checking App Store preferences, 122
 - overview of, 107-109
 - System Preferences, 112
 - updating software, 503

B

- Backup disks
 - configuring, 448-451
 - encryption of, 442
 - Time Machine, 442-443
- backupd process, 443
- Backups, 441
 - (see also Time Machine)
 - aging, 444
 - archives compared with, 388
 - configuring backup disks, 448-451
 - encrypting, 446
 - of data, 29
 - restoring directly from, 470
 - running out of space for, 445
 - selecting backup source, 97
 - selecting backup volume, 463-464
 - Time Machine format, 444
- Binary
 - property list files formatted as, 600
- Bluetooth
 - AirDrop and, 808
 - managing Bluetooth devices, 844
 - pairing Bluetooth devices, 845
 - PANs (personal area networks), 652
 - peripherals, 843
 - printers, 863
 - settings, 847
 - sharing via, 796
 - supported hardware network interfaces, 651
- Bluetooth 1.2, 844
- Bluetooth 3.0, 844
- Bluetooth 4.0, 844
- Bluetooth Setup Assistant, 846, 863
- Bonjour
 - compared with DNS, 631
 - configuring Bonjour printers, 882-887
 - network host addressing, 731
 - overview of, 730

- Boot Camp
 - booter selection and, 902
 - setup process, 254
- Booter
 - in startup process, 904
 - selecting, 902
 - stages of system initialization, 900
 - troubleshooting, 920
- BOOTP (Bootstrap Protocol)
 - as precursor to DHCP, 631
- BootROM (see Firmware)
- Bundles
 - overview of, 381
 - resources in, 383
- Bus connections
 - peripheral connectivity, 838

C

- Cache
 - deleting cache files to improve performance, 592
 - troubleshooting DNS service issues, 706
- CalDAV
 - for collaborative calendaring, 743
- Calendar application
 - as scheduling service, 740
- Camera
 - restricting access to built-in, 139
- Carbon
 - developing OS X applications, 490
- CardDAV
 - account types supported by Contacts application, 744
 - overview of, 745
- CD sharing
 - OS X sharing services, 794
- CDFS (Compact Disc File System), 250
- Cellular connections
 - Internet, 652
- Chat services
 - see Messages application, 748
- CIDR (CIDR (Classless Inter-Domain Routing))
 - configuring subnet masks and routers, 682
 - notation of subnet masks, 625
- Clean install
 - erase Mac system and install OS X Yosemite, 33
 - erasing disk drive, 35
 - multiple partitions, 16
 - partitioning options, 15
 - performing, 19
 - preparing system disk, 14
 - process of, 14, 37
 - single partition for system volume, 16
 - starting up from recovery or install disks, 34
 - vs. upgrade, 19
- Cocoa
 - developing native OS X applications, 490
- Code signing
 - in application security, 496
- Commands
 - process types, 578
- Comments
 - using comment metadata, 435
- Common UNIX Printing System (see CUPS (Common UNIX Printing System))
- Communication services
 - network services, 728
- Compact Disc File System (CDFS), 250
- Compatibility
 - checking hardware, firmware, and application compatibility, 23-28
 - software issues, 591
 - verifying application compatibility during upgrade, 10
- Compressed memory
 - memory management features, 580
- Compression
 - monitoring via Activity Monitor, 590
- Computer account
 - setting up, 48-50
- computer account
 - setting up, 62
- Computer names
 - network host addressing, 731
 - setting, 69-71
- Computers
 - registering, 52
 - setting computer name, 69-71
- Configuration profiles

- energy settings, 80-83
- overview of, 79
- Configuring OS X System
 - creating admin account, 63-65
 - Finder preferences, 66, 69
 - overview of, 60
 - setting computer name, 69-71
 - trackpad/mouse preferences, 71
 - with Setup Assistant, 60-63
- Connectivity
 - checking Ethernet connectivity issues, 701
 - checking VPN connectivity, 692
 - monitoring , 644
 - peripherals, 838
 - standards supported by OS X, 5
 - testing with ping, 709
 - troubleshooting network services, 820
 - verifying network connection, 642
 - Wi-Fi issues, 702
- Console utility
 - creating custom search query, 616
 - examining CUPS logs, 896
 - uses of, 275
 - viewing diagnostic reports, 595, 615
 - viewing firewall logs, 818, 831
 - viewing system logs, 615
- Contacts application
 - deleting contact imported from vCard, 466
 - importing vCards into, 464
 - managing contacts with, 744
 - restoring deleted contact, 467
 - using from iCloud, 573
- Content filters
 - parental control management options, 139
- Core Storage
 - Fusion Drive and, 251
 - managing startup volume, 355
 - managing volumes, 342
 - overview of, 250
- Country settings
 - Setup Assistant, 44
- Cover Flow view
 - accessing from Quick Look, 533
- CPU usage
 - forcibly quitting processes and, 606
 - monitoring process usage, 588
- Crashes
 - creating custom search query, 617
 - diagnosing, 594
 - viewing diagnostic reports, 616
- CUPS (Common UNIX Printing System)
 - device drivers, 858-860
 - examining CUPS logs, 896
 - overview of, 857
 - troubleshooting print system, 881
- D**
- Daemons
 - process types, 578
- Daisy-chained connections
 - USB and FireWire supporting, 841
- Data
 - recovering from nonstarting system, 349
 - securely erasing , 257, 259
- Database files
 - limitations of Time Machine, 445
- Desktop
 - in home folder content, 158
 - verifying user's home folder, 174
- Development
 - standards supported by OS X, 5
- Device drivers
 - CUPS drivers, 858, 860
 - peripherals, 850
 - troubleshooting print system, 881
- Devices (see Hardware)
- DHCP (Dynamic Host Configuration Protocol)
 - configuring network clients, 631
 - creating DHCP-based network location, 678
 - DHCP servers, 632
 - DHCP service issues, 705
 - examining DHCP configuration, 677
 - network preferences and, 634
 - servers, 677
 - TCP/IP configuration, 665
 - turning off DHCP service, 677
- Diagnostic reports
 - checking, 592
 - examining application diagnostics, 615
 - information in Setup Assistant, 51
 - troubleshooting applications, 594
 - viewing, 615
 - viewing via Console, 595
- Diagnostics & Usage
 - information in Setup Assistant, 51
 - security and privacy settings, 194
- Dictation & Speech preferences, 195
- Digital cameras
 - OS X device classes, 850
- Digital signatures
 - code signing and, 496
- Directory
 - network service access issues, 821
 - user account attributes, 137
- Disk images
 - comparing archiving technologies, 389
 - creating disk image archives, 395-396
 - creating empty , 393-394
 - installing drag-and-drop items, 502
 - mounting, 392
 - overview of, 392
 - saving home folder in, 160
- Disk space
 - viewing usage information, 454
- Disk Utility
 - creating disk image archives, 349, 395
 - creating disk images, 389
 - creating new partition scheme, 271-274
 - ejecting volumes as local admin, 275
 - encrypting disks, 260-262
 - erase and partition a disk, 270-274
 - Erase button, 36
 - erasing disk drive, 35
 - erasing disks or volumes, 15, 256
 - examining options in, 95
 - examining storage, 342
 - for storage management, 252

- formatting/reformatting disks, 101, 253-254, 349
 - managing encryption password, 281
 - mount management, 264
 - overview of, 90
 - Repair Disk Permissions, 351
 - repairing partition table and volume, 362, 369
 - repairing system file permissions, 367, 371
 - repartitioning disks, 20, 254-256
 - repartitioning startup disk without erasing, 268
 - securely erasing data, 259
 - securely erasing entire disk, 284
 - securely erasing free space on volumes, 283
 - troubleshooting partitions and volumes, 346, 346
 - viewing disk information, 356-360
 - Disks (see Hard disks)
 - DisplayPort
 - Thunderbolt and, 843
 - DNS (Domain Name System)
 - host name, 731, 792
 - Lookup tool for verifying DNS lookup, 721
 - network services that use UDP, 626
 - OS X supported network protocols, 655
 - overview of, 629
 - service issues, 706
 - TCP/IP configuration, 665
 - troubleshooting with Network Diagnostics, 718-721
 - verifying DNS lookup, 710
 - Dock
 - forcible quit via, 593, 603
 - Document management
 - architecture of Auto Save and Versions, 536
 - Auto Save, 537-539
 - automatic resume, 552
 - changing default application for a file type, 557-560
 - choosing application for opening file one time, 556
 - connecting via Launch Services, 527
 - disabling Auto Save, 554
 - duplicate and Save As, 539-541
 - enabling iCloud features, 566
 - examining default behaviors, 573
 - exercise working with multiple versions, 562
 - experimenting with Auto Save, 561
 - experimenting with preferences, 575
 - identifying file type, 528
 - Launch Services settings, 530
 - locking documents from applications, 545-546
 - locking documents from Finder, 544
 - locking/unlocking documents, 543, 564-565
 - opening documents from iCloud, 570
 - overview of, 527
 - Quick Look, 532
 - Quick Look plug-ins, 535
 - Quick Look window options, 534
 - registering applications, 529
 - resuming after logout, 552
 - resuming after quit, 553
 - saving to iCloud (see iCloud Drive)
 - turning off Auto Save, 576
 - versions, 541-543
 - viewing a file using Quick Look, 555
 - Documentation
 - with System Information, 59
 - Documents
 - creating text documents, 274
 - home folder content, 158
 - resource contention issues in fast user switching, 142
 - searching for, 439
 - standards supported by OS X, 5
 - troubleshooting, 592
 - verifying user's home folder, 174
 - Domain Name System (see DNS (Domain Name System))
 - Downloads
 - applications from mainserver, 517
 - home folder content, 158
 - verifying user's home folder, 174
 - Drag-and-drop
 - application from StudentMaterials, 518
 - application security and, 501
 - copying application to Applications folder, 518
 - downloading application from Mainserver, 517
 - installing applications, 501, 517
 - installing items, 502
 - Drivers (see Device Drivers)
 - DriveSavers recovery service, 341
 - Drop Box
 - as subfolder of Public folder, 322
 - permissions required for opening, 336
 - Write Only permissions, 315
 - Duplicate option
 - copying documents, 539
 - DVD sharing
 - OS X sharing services, 794
 - Dynamic Discovery
 - of network services, 729
 - Dynamic Host Configuration Protocol (see DHCP (Dynamic Host Configuration Protocol))
 - Dynamic memory allocation
 - memory management features, 579
- E**
- EFI (see Extensible Firmware Interface (EFI))
 - Email
 - Mail and Notes applications for, 737-740
 - services supported by Mail and Notes, 740
 - Encryption, 308
 - (see also FileVault)
 - FileVault settings, 50, 190-192
 - of backup disks, 442
 - of backups, 446
 - of disks, 260-262
 - of volumes, 278
 - turning off on Mac HD volumes, 308
 - Energy settings
 - Energy Saver, 792, 911
 - in configuration profile, 80-83
 - Environments
 - application environments, 490
 - Erase

- remote erase feature, 200
 - Ethernet
 - connectivity issues, 701
 - MAC addresses and, 623
 - manual configuration, 675
 - OS X supported network protocols, 655
 - status indicators, 645
 - supported hardware network interfaces, 651
 - TCP/IP packets and, 627
 - Everyone
 - permissions ownership, 314
 - setting to No Access, 325
 - EWS protocol
 - Exchange-based mail service, 740
 - Exchange
 - calendar services and, 743
 - contact services, 745
 - mail services and, 740
 - Exclusions
 - Time Machine, 451, 460
 - ExFAT (Extended File Allocation Table), 249
 - Extended (journaled) volumes (see Mac OS Extended (Journaled))
 - Extended attributes
 - metadata and, 422
 - Extended File Allocation Table (ExFAT), 249
 - Extensible Firmware Interface (EFI)
 - firmware based on, 901
 - for firmware updates, 356
 - Extensible Markup Language (XML), 600
 - Extensible Messaging and Presence Protocol (XMPP), 749
 - Extensions
 - app extensions (see App extensions)
 - filename extensions, 528
 - kernel extensions (see Kernel extensions)
 - types of system resources, 403
 - Extensis Suitcase Fusion
 - in font management, 411
 - External disks
 - backing up to, 442
 - backing up volumes to, 463
 - permissions for nonsystem volumes, 331
 - reformatting, 101
 - External recovery disk
 - overview of, 92
 - reformatting, 100-102
- ## F
- Family Sharing
 - managing, 484-486
 - Fast user switching
 - changing user permissions, 337
 - contention issues, 142
 - enabling/disabling, 141, 320
 - examining permissions as another user, 334
 - login options, 140-141
 - overview of, 139
 - resolving issues in, 143-144
 - storage issues, 143
 - Faxing
 - troubleshooting, 880
 - Featured view
 - App Store, 477
 - File Allocation Table (FAT)
 - volume formats, 249
 - File archives (see Archives)
 - File quarantine, 498
 - (see also Gatekeeper)
 - application security and, 497-498
 - File server
 - downloading student materials from, 73
 - File structure
 - OS X, 401-402
 - File system permissions (see Permissions)
 - File system shortcuts
 - aliases, 384
 - comparing types of, 383
 - hard links, 385
 - managing aliases, 387-388
 - overview of, 383
 - symbolic links, 385
 - File systems
 - components, 245
 - core storage, 250
 - creating new partition scheme, 271-274
 - creating text documents, 274
 - ejecting disks, 263
 - ejecting in-use volumes, 266
 - ejecting volumes as local admin, 275
 - encrypting disks, 260-262
 - encrypting volumes, 278
 - encrypting volumes in Finder, 279
 - erase and partition a disk, 270
 - erasing disks or volumes, 256-258
 - examining disk ejection, 274
 - formatting/reformatting disks, 253-254
 - Fusion Drive, 251
 - improper unmount or eject, 267
 - managing, 252
 - metadata, 421
 - mount managed with Disk Utility, 264
 - mounting, unmounting, ejecting volumes, 263
 - partition schemes, 246-247
 - repartitioning disk dynamically, 268
 - repartitioning disks, 254-256
 - repartitioning startup disk without erasing, 268
 - securely erase entire disks, 284
 - securely erasing files, 258-260
 - securely erasing free space on volumes, 282
 - standards supported by OS X, 5
 - storage and, 245
 - storage concepts, 246
 - tags, 423-425
 - user ejecting volumes, 277
 - viewing permissions, 311-313
 - volume formats, 247-250
 - File systems, troubleshooting
 - examining files manually in target disk mode, 365
 - examining local storage, 353
 - examining storage with Disk Utility, 342
 - examining storage with System Information, 344
 - inspection, 341
 - overview of, 341
 - partitions and volumes, 346
 - permissions and, 350
 - recovering data from nonstarting system, 349
 - Repair Disk Permissions feature, 351
 - repairing home folder permissions, 372

- repairing partition table and volume, 362, 369
- repairing partitions and volumes in OS X Recover mode, 368
- repairing partitions and volumes in target disk mode, 360
- repairing system file permissions, 367, 371
- resetting home folder permissions, 352
- starting computer in target disk mode, 361
- target disk mode and, 347
- Verify and Repair feature in Disk Utility, 346
- viewing disk information with Disk Utility, 356-360
- viewing disk information with System Information, 354
- File Transfer dialog, screen sharing and, 802
- File Transfer Protocol (see FTP (File Transfer Protocol))
- File-sharing
 - AppleDouble issues, 767
 - automatic authentication of file services, 752
 - automatically connecting file shares, 761
 - automatically mounting network shares, 780
 - browsing to file shares, 751-752
 - browsing to SMB share, 777
 - copying files to network share, 779
 - disconnecting mounted shares, 760
 - exercise using, 777
 - manual authentication of file services, 753
 - manually connecting to AFP share, 782
 - manually connecting to file services, 755
 - manually connecting to SMB or AFP, 755
 - mounted shares, 758
 - OS X sharing services, 794
 - protocols, 749
 - troubleshooting, 767
 - troubleshooting Services for Macintosh issues, 768
- Filename extensions, 528
- Files
 - application registration in determining file types, 529
 - backing up during upgrade, 11
 - changing default application for a file type, 557-560
 - choosing application for opening file one time, 556
 - examining file metadata, 435
 - examining manually, 365
 - identifying file type using Launch Services, 528
 - managing keychain files, 226
 - repairing keychain files, 228
 - restoring with Time Machine, 469
 - securely erasing, 258-260
 - storing in home folder, 333
 - viewing with Quick Look, 555
- FileVault
 - configuring recovery, 289-291
 - enabling, 289
 - enabling users, 291
 - initiating recovery process, 294
 - lost recovery keys, 296
 - overview of, 287
 - recovery key, 293
 - recovery using Apple ID, 295
 - resetting user passwords, 304
 - restarting and encrypting, 292
 - restarting FileVault-protected system, 301
 - restoring original password, 306
 - technology of, 287-288
 - Time Machine issues, 445
 - turning off, 308
 - turning off encryption on Mac HD volumes, 308
 - turning on, 296
 - turning on using System Preferences, 296-300
 - unlocking protected systems, 903
 - using recovery key, 304
- FileVault 2
 - addressing issues in legacy FileVault, 287
 - encryption settings, 50
 - full disk encryption, 190
 - recovery key at startup, 184
 - technology of, 287
 - types of keychain files, 220
- FileVault, legacy
 - changing to FileVault 2, 297
 - overview of, 287
 - passwords, 176
 - resetting passwords, 185
 - restoring user accounts, 455
 - security and privacy settings, 190-192
 - types of keychain files, 220
- Find My Mac
 - enabling, 47
 - guest accounts and, 130
 - security and, 197-200
- Finder
 - accessing, 73
 - adding permission entries, 327
 - adding printers, 863
 - adjusting account preferences, 150
 - app extensions and, 582
 - changing permission ownership, 328
 - creating aliases, 387
 - customizing tags, 424
 - deleting permissions, 329
 - displaying file information, 436
 - ejecting disks, 263
 - encrypting disks, 261
 - encrypting volumes, 279
 - examining permissions as another user, 334
 - expanding zip archives, 391
 - exploring default permissions, 320
 - file- and folder-level permissions, 315
 - Go to Folder option, 380
 - hiding filename extensions, 528
 - identifying permissions and ownership, 313
 - inspecting hard links, 386
 - managing document locking, 544
 - managing parental control options, 138
 - managing permissions, 326
 - manually copying data from target Mac to storage, 349
 - manually restoring via, 457-458
 - methods for hiding items and, 378

- modifying Launch Service settings, 531
 - modifying permission entries, 329
 - mounting/unmounting disks, 264
 - navigating hidden folders, 378
 - Network folder, 752
 - preferences, 66-69
 - propagating folder permissions, 330
 - removing applications with, 525
 - restoring directly from Time Machine, 470
 - revealing package content, 382
 - searching for documents, 439
 - securely erase option, 259, 282
 - testing managed accounts, 156
 - viewing permissions, 311
 - Finger tool
 - getting user information with, 708
 - Firewalls
 - blocking ping, 710
 - personal (see Personal Firewalls)
 - security and privacy settings, 192
 - troubleshooting network services, 820
 - FireWire
 - supported hardware network interfaces, 651
 - target disk mode support, 348
 - versions, 840
 - FireWire 400, 841
 - FireWire 800, 841
 - Firmware
 - booter selection, 902
 - checking compatibility during upgrade, 23-28
 - initializing, 901
 - Power-On Self-Test, 901
 - stages of system initialization, 900
 - startup shortcuts, 903
 - troubleshooting during startup, 919
 - unlocking FileVault protected systems, 903
 - updating, 12-14, 903
 - Firmware Password Utility, 91
 - Firmware passwords
 - accessing, 200-202
 - removing, 217
 - setting, 216
 - testing, 216
 - types of passwords, 176
 - First Aid tab
 - Disk Utility, 351
 - Flags
 - file flags for metadata, 422
 - Folder permissions
 - restricting guest accounts, 130
 - sharing-only accounts, 131
 - Folders
 - backing up during upgrade, 11
 - copying between users, 164
 - examining hidden system folders, 399
 - examining Library folder, 397-399
 - home folder (see Home folders)
 - navigating hidden, 397
 - packages and bundles as special types of, 382
 - propagating folder permissions, 330
 - restoring, 172
 - shared, 323
 - Smart Folders, 432
 - storing in home folders, 333
 - Font Book
 - adding font for single user, 416-418
 - confirming font unavailable to other users, 418
 - disabling fonts, 412
 - installing fonts, 410-412
 - removing fonts, 415-416
 - resolving font issues, 413
 - validating fonts, 419
 - Font Validation window, 414
 - Fonts
 - adding for single user, 416-418
 - confirming unavailability to other users, 418
 - disabling, 412
 - installing, 410-412
 - overview of, 410
 - removing, 415-416
 - resolving issues with, 413
 - types of system resources, 403
 - validating, 419
 - Force Quit window, 593, 604
 - Forcible quit
 - quitting applications, 593
 - using Force Quit window, 604
 - via Dock, 603
 - Formatting/reformatting disks and volumes
 - overview of, 253-254
 - Frameworks
 - plug-ins, 851
 - types of system resources, 403
 - FTP (File Transfer Protocol)
 - manually connecting to, 756
 - OS X supported file service protocols, 750
 - Fusion Drive
 - as "Internal Drive", 253
 - overview of, 251
- ## G
- Game Center
 - parental control management options, 139
 - Gatekeeper
 - for application security, 498-500
 - modes of application restriction, 498
 - temporarily bypassing, 500
 - testing security settings, 519
 - General preferences
 - disabling, 554
 - resuming after quit, 553
 - Go to Folder
 - examining hidden system folders, 399
 - navigating hidden folders, 380
 - GPT (see GUID Partition Table (GPT))
 - Graphics
 - previewing with Quick Look, 535
 - Groups
 - administrative accounts as members of admin group, 129
 - application group containers, 408
 - local group accounts, 131
 - permission ownership, 314
 - user account attributes, 137
 - Users & Groups preferences, 132
 - Guest accounts
 - overview of, 130
 - GUID Partition Table (GPT)
 - partitioning options, 247

- preparing for upgrade or clean install, 14
 - reformatting external disks, 100
 - switching to /from MBR, 271
- ## H
- ### Hangs
- creating custom search query, 617
 - diagnosing, 594
 - viewing diagnostic reports, 616
- ### Hard disks, 267
- (see also Volumes)
 - backing up to external disks, 442
 - ejecting, 263
 - encrypting, 260-262
 - erasing , 35, 256-258
 - erasing and partitioning, 270
 - examining disk ejection, 274
 - formatting/reformatting disks, 253-254
 - options for internal disks, 355
 - permissions for nonsystem disks, 331
 - preparing system disk for upgrade or clean install, 14
 - reformatting, 349
 - reformatting external disks, 100-102
 - repartitioning, 254-256
 - repartitioning dynamically, 268
 - repartitioning startup disk without erasing, 268
 - securely erasing, 284
 - viewing disk information, 354-356
 - viewing disk information with Disk Utility, 356-360
- ### Hard links
- comparing types of file system shortcuts, 385
- ### Hardware
- authorization of iCloud device, 232
 - checking compatibility during upgrade, 23-28
 - examining internal devices, 855
 - network hardware interfaces, 651
 - System Preferences, 53
 - troubleshooting, 919
 - troubleshooting print system, 880
- ### HID (human input devices)
- OS X device classes, 849
- ### Hidden items
- bundles and packages, 381
 - examining hidden system folders, 399
 - Library folder, 378, 397-399
 - locating with Go to Folder, 380
 - navigating, 397
 - navigating hidden folders in Finder, 378
 - overview of, 377
 - package resources, 383
 - revealing package content, 382
- ### Home directory
- deleting, 161
 - user account attributes, 137
- ### Home folders
- contents of, 157-159
 - creating, 166-169
 - creating and verifying user accounts, 172
 - deleting user accounts, 159-161, 169
 - manually restoring, 164-165
 - migrating, 161-164
 - overview of, 157
 - repairing permissions, 372
 - resetting permissions, 352
 - restoring deleted user account, 166, 170-172
 - sharing, 320, 322
 - storing files and folders in, 333
 - verifying, 173
- ### Host sharing
- AirDrop and, 808
 - AirDrop architecture, 808
 - AirDrop discovery issues, 812
 - configuring network identification, 792
 - connecting to virtual display, 825-827
 - connecting via screen sharing, 799-802
 - controlling another Mac via screen sharing, 802
 - enabling ARD remote management, 806-807
 - enabling screen sharing, 798, 821
 - network service access issues, 820
 - network service communication issues, 820
 - overview of, 791
 - remotely controlling another computer's screen, 823-825
 - screen sharing via Messages application, 803-805
 - screen-sharing architecture, 797
 - services, 791
 - shared services, 794-796
 - testing stealth mode, 832
 - troubleshooting shared services, 819
 - using AirDrop, 810
- ### Hot-pluggable connections
- USB and FireWire supporting, 841
- ### HTTP (Hypertext Transfer Protocol), 737
- ### HTTPS (HTTP Secure), 737
- ## I
- ### iBooks
- iCloud Family Sharing, 484
- ### iCalendar files
- calendar services and, 743
- ### iChat (see Messages application)
- ### iCloud
- changing local account passwords, 177-179
 - configuring FileVault recovery, 289
 - configuring iCloud Drive, 547-549, 567
 - creating recovery key, 297
 - enabling features of, 566
 - enabling iCloud Keychain, 50
 - iMessage service, 746
 - installing apps from App Store, 508
 - locating lost devices, 197
 - managing Family Sharing, 484-486
 - opening documents from, 570
 - overview of, 47
 - resetting user passwords, 208
 - restoring user passwords, 307
 - retrieving recovery key from, 295
 - saving documents, 546
 - saving documents to, 569
 - saving file system tags, 424
 - using contacts from, 573

- using iCloud Drive, 549
- iCloud Drive
 - architecture, 551
 - configuring, 547-549, 567
 - logging into new account and, 150
 - opening documents, 572
 - overview of, 546
 - saving documents, 569
 - settings, 50
 - using, 549-551
- iCloud keychain
 - device authorization, 232
 - managing security of, 232
 - resetting, 233
 - resetting keychain passwords, 225
 - security code, 230
 - understanding, 229
 - understanding user keychains, 223
- IEEE (Institute of Electrical and Electronics Engineers), 840
- IEEE 802.3ad, 654
- IEEE-1394 (see FireWire)
- iLife
 - software update, 112
- IMAP
 - for receiving email, 740
- iMessage service
 - overview of, 748
 - via iCloud, 746
- Indexes
 - metadata and, 429-430
 - preventing Spotlight from indexing, 434
- Info button (Disk Utility), 342
- Info pane (Network Utility)
 - monitoring network traffic, 722
 - overview of, 707
 - viewing status of network hardware interface, 708
- Info window (Finder)
 - adding new permissions entry, 327
 - changing permission ownership, 328
 - changing user permissions, 338
 - deleting permissions, 329
 - displaying file information, 436
 - examining permissions as another user, 334
 - inspecting application information, 586
 - inspecting hard links, 386
 - managing document locking, 544
 - managing permissions, 327
 - overriding Launch Services defaults, 530
 - viewing permissions, 311
- Initializing system (see System initialization)
- Input devices
 - HID (human input devices), 849
- Inspector window (Finder)
 - exploring default permissions, 320
 - identifying permissions and ownership, 313
 - managing document locking, 544
 - overriding Launch Services defaults, 530
- Install disks
 - creating, 99, 103-104
 - start up from, 34
 - testing, 104
- Installation packages
 - anatomy of, 383
 - Apple application (see OS X Installer)
 - installing applications, 115
 - installing apps, 514
 - installing updates, 121
 - overview of, 502
- Installer (see OS X Installer)
- Installer packages (see Installation packages)
- Installing OS X Yosemite
 - acquiring the OS X Installer, 17
 - backing up data prior to install, 29
 - backing up files and folders prior to upgrade, 11
 - checking hardware, firmware, and application compatibility, 23-28
 - choosing installation destination, 20
 - documenting network settings, 28
 - documenting settings, 11
 - downloading Installer from App Store, 30
 - erase Mac system and install, 33
 - erasing disk drive, 35
 - examining Installer Log, 40
 - on newer Mac systems, 18
 - options, 5-7
 - OS X Installer log, 22
 - overview of, 3
 - partitioning options, 15
 - performing clean install, 19
 - preparing for upgrade, 9
 - preparing Macs for upgrade, 23
 - preparing system disk, 14-17
 - process of, 19, 37
 - starting up from recovery or install disks, 34
 - troubleshooting OS X Installer, 21
 - updating Apple software during upgrade, 11
 - updating firmware, 12-14
 - upgrade preparation, 7
 - upgrade prerequisites, 30
 - upgrade process, 31
 - upgrade vs. clean install, 19
 - verifying application compatibility, 10
 - verifying installation process, 40
 - verifying installation requirements, 7-9
- Instant messaging
 - Messages application for, 746-749
- Internet
 - account preferences, 732
 - calendar services and, 743
 - cellular connections, 652
 - configuring OS X system, 61
 - contact services, 745
 - downloading software updates, 120
 - messaging services, 748
 - searching with Spotlight, 429
 - sharing via, 796
 - System Preferences, 53
 - testing Web access, 683
- Internet Accounts preferences
 - configuring network service accounts, 734-737
 - overview of, 732
- Internet Printing Protocol (IPP), 857
- Internet Protocol addresses (see IP (Internet Protocol) addresses)

Internet Protocol Security (see IPSec (Internet Protocol Security))

IP (Internet Protocol) addresses

- configuring network identification, 792
- finding destination on local network, 627
- in network communication, 624
- link-local addresses, 705
- multiple address availability, 656
- network host addressing, 731
- of Line Printer Daemon, 864
- resolving DNS name to, 630
- resolving MAC addresses to, 627
- static addresses, 680
- subnet masks, 625
- TCP/IP configuration, 667

IPP (Internet Printing Protocol), 857

IPSec (Internet Protocol Security), 660, 688

IPv4

- IP address standards, 624

IPv6

- IP address standards, 624

ISO 9660

- volume formats, 250

iTunes

- iCloud Family Sharing, 484

iWork

- software update, 112

J

Java

- installing Java applications, 491-493

Journaled volumes (see Mac OS Extended (Journaled))

K

Kerberos

- automatic authentication of file services, 752

Kernel

- in system startup, 905
- stages of system initialization, 901
- troubleshooting, 921

Kernel extensions

- app extensions contrasted to, 582
- device driver implementations in OS X, 851
- in system startup, 905
- inspecting, 852
- system initialization and, 905
- types of system resources, 403

KEXTs (see Kernel extensions)

keyboard

- settings, 61

Keychain Access utility, 212

- managing items, 221
- managing keychain files, 228
- repairing keychain files, 228
- resetting keychain passwords, 226
- showing keychain status in menu bar, 234-236

Keychain First Aid, 213, 228

Keychain Management

- architecture of keychains, 219
- iCloud device authorization, 232
- iCloud keychain security, 230, 232
- local keychain files, 220
- managing items in keychain access, 221
- managing keychain files, 226
- managing Safari keychain items, 223
- overview of, 219
- repairing keychain files, 228
- resetting iCloud keychains, 233
- resetting keychain passwords, 225
- retrieving passwords from keychain, 238-240
- showing keychain status in menu bar, 234-236
- storing passwords in keychains, 237
- synchronizing keychain password with account, 240-242
- understanding iCloud keychains, 229
- understanding user keychains, 223

Keychains

- enabling iCloud Keychain, 50
- resetting keychain passwords, 185, 225

- reverifying keychain synchronization, 215
- saving network password to, 636
- saving Time Machine disk password, 442
- synchronizing keychain passwords, 211
- Time Machine authentication information saved to, 450
- types of passwords, 176
- types of system resources, 403
- updating, 174
- verifying synchronization of keychain passwords, 212

L

L2TP (Layer 2 Tunneling Protocol)

- OS X supported VPNs, 688
- over IPSec, 660

LACP (Link Aggregation Control Protocol), 654

Language & Region preferences

- country and keyboard settings, 44
- dictation feature and, 195

Languages

- country and keyboard settings, 44
- dictation feature and, 195

LANs (local area networks), 627

Launch Services

- application registration, 529
- file type identification, 528
- overview of, 527
- settings, 530

launchd

- in startup process, 905
- items, 906
- logout process and, 915
- shutdown and restart, 915
- stages of system initialization, 901
- stages of user sessions, 907
- troubleshooting, 922
- user sessions and, 908
- viewing hierarchy, 906

LaunchDaemons/LaunchAgents

- types of system resources, 403

Launchpad

- removing applications with, 523
- testing purchased app, 512

- Layer 2 Tunneling Protocol (see L2TP (Layer 2 Tunneling Protocol))
 - LDAP
 - account types supported by
 - Contacts application, 744
 - directory service contacts, 746
 - Legacy applications
 - installing, 491
 - Legacy Sites folder
 - sharing and, 321
 - Library folder
 - application group containers in, 408
 - corrupted resources in, 602
 - examining, 397-399
 - home folder content, 158
 - in OS X file structure, 402
 - navigating hidden folders, 378
 - preference files in, 597
 - verifying user's home folder, 174
 - Line Printer Daemon (LPD), 864
 - Link aggregate
 - OS X support for virtual network services, 654
 - Link Aggregation Control Protocol), 654
 - Link-local addressing
 - DHCP and, 705
 - Links
 - hard links, 385
 - symbolic links, 385
 - Local account passwords
 - changing using Apple ID, 177-179
 - changing without using Apple ID, 179
 - types of passwords, 175
 - Local Admin account
 - authentication, 151
 - configuring Time Machine, 459
 - creating, 145-149
 - creating home folder for user account, 166-169
 - creating new partition scheme, 271
 - creating text documents, 274
 - ejecting volumes, 275
 - Enable User button, 299
 - enabling screen sharing, 821
 - encrypting volumes in Finder, 279
 - managing user accounts, 145
 - repartitioning startup disk
 - without erasing, 268
 - resetting user passwords, 206-209
 - securely erasing free space on volumes, 282
 - verifying user's home folder, 173
 - viewing diagnostic reports, 615
 - Local Area Networks (LANs), 627
 - Local group accounts
 - overview of, 131
 - Local resource domain, 405
 - Location Services
 - Find My Mac feature, 48, 197-200
 - Wi-Fi required for, 193
 - Locations
 - network (see Network locations)
 - Lock
 - remote lock feature, 200
 - Locking documents
 - locking and unlocking, 564-565
 - managing, 564
 - managing from an application, 545-546
 - managing in Finder, 544
 - overview of, 543
 - Login
 - fast user switching and, 140-141
 - safe mode login, 923
 - to FileVault-protected account, 302
 - to new account, 149
 - user sessions and, 907
 - Login keychains
 - types of keychain files, 220
 - understanding user keychains, 223
 - Login shell
 - user account attributes, 137
 - loginwindow
 - in user sessions, 907
 - logout process and, 915
 - shutdown and restart, 915
 - stages of user sessions, 907
 - troubleshooting logout and shutdown, 924
 - Logout
 - overview of, 914
 - troubleshooting, 923
 - Logs
 - diagnostic (see Diagnostic reports)
 - examining CUPS logs, 896
 - examining Installer Log, 40
 - in troubleshooting applications, 592
 - OS X Installer, 22
 - types of system resources, 404
 - viewing firewall history, 818
 - viewing firewall log, 831
 - viewing system logs, 615
 - Lookup tool
 - overview of, 708
 - verifying DNS lookup, 710
 - LPD (Line Printer Daemon), 864
- ## M
- MAC (Media Access Control)
 - addresses
 - identifying network devices, 623
 - resolving to IP addresses, 627
 - Mac computers
 - installing OS X Yosemite on, 18
 - OS X Yosemite supported, 9
 - preparing for upgrade, 23
 - registering, 52
 - updating firmware, 12
 - Mac Dev Center
 - working with bundles and packages, 382
 - Mac OS Extended
 - reformatting external disks, 102
 - volume formats, 248
 - Mac OS Extended (Case-Sensitive)
 - volume formats, 248
 - Mac OS Extended (Journaled)
 - backing up to, 442
 - manually restoring via Finder, 457
 - metadata and, 426
 - partition format requirements, 20
 - preparing system disk for upgrade or clean install, 14
 - volume formats, 248
 - Mac OS Extended (Journaled, Encrypted)
 - in FileVault 2, 287
 - volume formats, 248
 - Mac OS Standard
 - volume formats, 248
 - Mail application
 - as email service, 737
 - parental control management options, 139

- turning off Mail service in troubleshooting exercise, 784
 - Mail.app Connection Doctor
 - troubleshooting, 765
 - troubleshooting Mail service, 785
 - Mainserver
 - downloading applications from, 517
 - scanning, 775
 - Managed accounts
 - creating, 153-155
 - testing, 155-156
 - Manual updates
 - downloading from Internet, 120
 - installing in a classroom, 118
 - overview of, 114
 - Master Boot Record (MBR)
 - partitioning options, 247
 - reformatting external disks, 100
 - switching to GPT partition scheme, 271
 - Master passwords
 - overview of, 181
 - resetting, 186
 - resetting after failed login, 183
 - resetting user passwords , 209
 - types of passwords, 176
 - MBR (see Master Boot Record (MBR))
 - MDM (see Mobile Device Management (MDM))
 - Media Access Control addresses (see MAC (Media Access Control) addresses)
 - Memory
 - management features, 579
 - Menu bar
 - showing keychain status in , 234-236
 - Messages application
 - for instant messaging and texting, 746-749
 - parental control management options, 139
 - screen sharing via, 803-805
 - troubleshooting, 766
 - Metadata
 - AppleDouble file format, 426
 - examining file metadata, 435
 - file flags and extended attributes, 422
 - file system and, 421
 - file system tags, 423-425
 - overview of, 421
 - searching for documents and, 439
 - searching via Spotlight, 428
 - tags and comments, 435
 - Migration (transfer)
 - of home folders, 161-164
 - Migration (transfer) settings
 - Setup Assistant, 45
 - Migration Assistant
 - functions of, 161-164
 - manually restoring home folders, 164-165
 - migrating user data, 349
 - restoring via, 454
 - transferring user/computer information between systems, 45
 - Mobile Device Management (MDM)
 - deploying network service configuration profiles, 737
 - parental controls as subset of, 138
 - profile management, 55
 - Monitoring
 - applications via System Information, 586
 - network connectivity, 643
 - network traffic, 722
 - overview of, 586
 - processes via Activity Monitor, 587-591
 - Mounting/unmounting disks/volumes
 - ejecting disks, 263
 - ejecting in-use volumes, 266
 - ejecting volumes as local admin, 275
 - improper unmount or eject, 267
 - overview of, 263
 - user ejecting volumes, 277
 - with Disk Utility, 264
 - Mouse preferences, 71
 - Move To command
 - moving documents to new location, 540
 - Movies
 - home folder content, 159
 - verifying user's home folder, 174
 - Multihomed locations
 - creating, 684
 - Multilink network architecture, 656
 - Multiprocessing
 - symmetric, 578
 - Multitasking
 - preemptive, 578
 - Music
 - home folder content, 159
 - verifying user's home folder, 174
- N**
- Native OS X applications
 - installing, 490
 - NetBIOS (Network Basic Input/Output System)
 - network host addressing, 731
 - OS X supported network protocols, 655
 - overview of, 671
 - NetBoot server, 917
 - NetInstall service
 - getting booter from, 904
 - Netstat
 - Network Utility tools, 708
 - Network Basic Input/Output System (see NetBIOS (Network Basic Input/Output System))
 - Network devices
 - areas of network issues, 700
 - Network Diagnostics Assistant
 - overview of, 706
 - troubleshooting DNS, 718-721
 - Network File System (see NFS (Network File System))
 - Network interfaces
 - defined, 622
 - getting interface information with Network Utility, 708
 - hardware interfaces, 651
 - multiple simultaneous, 656
 - Network locations
 - changing, 650
 - configuring, 648, 676
 - creating DHCP-based , 678
 - creating multihomed location, 684
 - creating static, 680
 - creating Wi-Fi-only locations, 693
 - examining DHCP configuration, 677
 - overview of, 647
 - turning off DHCP service, 677
 - Network preferences

- checking network status, 701, 714
- checking shared Mac network configuration, 820
- configuring networks, 633
- monitoring network connectivity, 644
- troubleshooting network by
 - checking, 701
 - verifying Ethernet status, 702
- Network printers
 - configuring, 861
 - troubleshooting, 880
- Network protocols
 - defined, 622
 - overview of, 654
- Network resource domain, 405
- Network services
 - access issues, 820
 - applications, 732
 - architecture, 727
 - areas of network issues, 700
 - automatic authentication of file services, 752
 - automatically connecting file shares, 761
 - automatically mounting network shares, 780
 - Bonjour, 730
 - browsing to file shares, 751-752
 - browsing to SMB share, 777
 - changing service order, 686
 - communication issues, 820
 - communications, 728
 - configuring network service accounts, 734-737, 768
 - configuring network service order, 684
 - contact management in Contacts application, 744-746
 - copying files to network share, 779
 - creating multihomed location, 684
 - deactivating, 659
 - defined, 622
 - DHCP service issues, 705
 - disconnecting mounted shares, 760
 - DNS service issues, 706
 - dynamic discovery, 729
 - e-mail services in Mail and Notes applications, 737-740
 - file-sharing protocol, 749
 - host addressing, 731
 - identifying, 728
 - instant messaging service in Messages application, 746-749
 - Internet account preferences, 732
 - list, 657
 - managing, 658-660
 - manual authentication of file services, 753
 - manually connecting to AFP share, 782
 - manually connecting to file services, 755
 - manually connecting to NFS, WebDAV, or FTP, 756
 - manually connecting to SMB or AFP, 755
 - mounted shares and, 758
 - multilink and, 656
 - multiple simultaneous interfaces, 656
 - overview of, 656, 727
 - Safari browser and, 737
 - scanning servers, 775
 - scheduling service in Calendar and Reminders applications, 740-743
 - setting up new account, 770-773
 - SMB, 730
 - software, 727
 - testing new account, 773
 - troubleshooting, 762, 784
 - troubleshooting file-sharing, 767
 - troubleshooting Mail application with Mail.app Connection Doctor, 785
 - troubleshooting network applications, 765
 - troubleshooting ports with Port Scan, 763-765
 - troubleshooting with Network Utility, 787-790
 - turning off Mail service in troubleshooting exercise, 784
 - using file-sharing services, 777
 - viewing existing accounts, 768
 - virtual, 653
- Network settings
 - Setup Assistant, 45
- Network Setup Assistant
 - in network configuration process, 633
- Network Utility
 - accessing from OS X Recovery, 91
 - interface information, 708
 - Lookup tool for verifying DNS lookup, 710, 721
 - monitoring network traffic, 722
 - overview of, 707
 - ping for testing connectivity, 709, 715-718
 - Port Scan tool, 763-765
 - scanning Mainserver, 775
 - testing stealth mode, 832
 - traceroute tool for checking connections, 711
 - troubleshooting network services, 787-790
- Networking
 - accessing Time Machine over networks, 458
 - advanced configuration (see Advanced network configuration)
 - automatic WPA enterprise configuration, 636
 - basic configuration, 633
 - cellular Internet connections, 652
 - changing network locations, 650
 - concepts, 622
 - configuring network locations, 648-649, 676
 - configuring OS X system, 61
 - connecting to Wi-Fi network, 639
 - creating static network location, 680-683
 - DHCP protocol and, 631
 - DNS protocol and, 629
 - documenting network settings, 11, 28
 - essentials of, 621
 - hardware interfaces, 651
 - IP addresses and, 624
 - joining invisible network, 641
 - joining visible network, 641
 - LAN traffic, 627
 - MAC addresses and, 623
 - monitoring connectivity via network preferences, 644

- network locations, 647
 - network protocols, 654
 - network services (see Network services)
 - preferences, 633
 - router addresses, 625
 - standards supported by OS X, 5
 - subnet masks, 625
 - TCP protocol, 626
 - terminology, 622-623
 - testing Web access, 683
 - troubleshooting (see Troubleshooting networks)
 - verifying connection, 642
 - verifying network settings, 639-641
 - virtual private networks (see VPNs (Virtual Private Networks))
 - virtual services, 653
 - WAN traffic, 628
 - Wi-Fi authentication, 635-636
 - Wi-Fi configuration, 634-635
 - Wi-Fi status menu options, 637
 - New Technology File System (NTFS)
 - access control lists (ACLs), 315
 - volume formats, 249
 - NFS (Network File System)
 - manually connecting to, 756
 - manually connecting to file services, 755
 - OS X supported file service protocols, 750
 - No Access
 - applying to Everyone permission, 325
 - file and folder permissions, 315
 - home folder and, 334
 - Notes application
 - overview of, 739
 - Notification Center
 - integration of software updates with, 108
 - Today view, 583, 585
 - NTFS (see New Technology File System (NTFS))
- O**
- Online Help
 - recovery utilities, 90
 - viewing for OS X Recovery, 94
 - Open Directory
 - user account attributes, 135
 - Open source software
 - installing, 494
 - OS X Installer
 - accessing from OS X Recovery, 93
 - acquiring, 17
 - advanced features, 116
 - downloading, 30, 99
 - examining, 97
 - examining Installer Log, 40
 - installing/reinstalling OS X, 90
 - log, 22
 - print drivers and, 859
 - software updates with, 115
 - Time Machine support, 20
 - troubleshooting, 21
 - types of installation packages, 502
 - OS X Lion
 - upgrading to OS X Yosemite, 6
 - OS X Mavericks
 - file system tags and, 424
 - upgrading to OS X Yosemite, 6
 - OS X Mountain Lion
 - backup disk support, 443
 - upgrading to OS X Yosemite, 6
 - OS X Recovery
 - accessing Network Utility from, 708
 - Disk Utility, 95
 - examining utilities in, 94
 - external recovery disk, 92
 - OS X Installer, 97
 - overview of, 87
 - repairing partitions and volumes, 368
 - repartitioning when recovery key lost, 296
 - Reset Password utility, 184, 350
 - resetting passwords, 187, 202-205
 - restoring entire system, 455
 - startup from, 87, 93, 917
 - Time Machine, 97
 - utilities, 89-92
 - verifying startup disk and restart option, 98
 - viewing online help, 94
 - OS X v. 10.6
 - upgrading to OS X Yosemite, 6
 - OS X Yosemite, introduction
 - integration through standards, 4
 - overview of, 3
 - what's new, 4
 - OSI (Open Systems Interconnection) model, 622
 - Ownership
 - changing permission ownership, 328
 - file permissions, 314
- P**
- PAC (proxy autoconfiguration) files, 673
 - Packages
 - installation packages (see Installation packages)
 - overview of, 381
 - resources in, 383
 - Pairing
 - Bluetooth devices, 845
 - PANs (personal area networks)
 - Bluetooth and Wi-Fi, 652
 - Parallels Desktop
 - third-party virtualization tools, 654
 - Parental controls
 - creating managed account with, 153-155
 - limiting access to App Store, 489
 - management options, 138
 - overview of, 138-139
 - restricting guest accounts, 130
 - testing managed accounts, 155-156
 - Partitions
 - Core Storage and, 250
 - creating new partition scheme, 271-274
 - erase and partition a disk, 270
 - Fusion Drive and, 251
 - multiple, 16
 - repairing in OS X Recovery mode, 368
 - repairing in target disk mode, 360
 - repairing partition table and volume, 362, 369
 - repartitioning disks, 254-256
 - repartitioning dynamically, 268
 - repartitioning startup disk without erasing, 268
 - single partition for system volume, 16
 - troubleshooting, 346

- troubleshooting installation
 - issues, 21
 - understanding partitioning
 - options, 15
- Password Assistant, 180, 206-209
- Passwords
 - accessing firmware passwords, 200-202
 - administrative accounts and, 129
 - backup encryption and, 446
 - changing, 177-180, 214
 - changing lost, 352
 - creating managed account with
 - parental controls, 153
 - FileVault-enabled, 292
 - guest accounts and, 130
 - logging into new account, 133, 149
 - login options, 140
 - loss of login password, 293
 - modifying user accounts and, 172
 - Password Assistant, 180
 - removing firmware passwords, 217
 - Reset Password utility, 91
 - resetting account passwords in OS X Recovery, 202
 - resetting keychain passwords, 185, 225
 - resetting legacy FileVault passwords, 185
 - resetting master password, 186
 - resetting OS X Recovery password, 187
 - resetting password using master password, 209
 - resetting passwords after failed login, 205
 - resetting user passwords, 206-209, 304
 - restoring original password, 306
 - retrieving from keychain, 238-240
 - reverifying keychain synchronization, 215
 - setting firmware passwords, 216
 - setting up computer account, 49
 - storing in keychains, 237
 - synchronizing keychain passwords, 211, 240-242
 - testing firmware passwords, 216
 - types of, 175-177
 - updating keychain password, 174
 - verifying synchronization of keychain passwords, 212
 - VNC access and, 799
- PayPal
 - App Store purchases and, 479
- PCI Express
 - for internal disks, 355
 - Thunderbolt and, 842
- PCL (Printer Command Language), 859
- PDF (Portable Document Format)
 - installing PDF service, 893, 893-895
 - print to PDF, 892
 - troubleshooting print system, 880
 - using PDF tools, 875
- Peripherals
 - Bluetooth, 843
 - connectivity, 838
 - device classes, 849
 - device drivers, 850
 - examining external USB devices, 856
 - examining internal devices, 854
 - examining via System Information, 854
 - FireWire options, 840
 - inspecting kernel extensions, 852
 - managing Bluetooth devices, 844
 - managing Bluetooth settings, 847
 - overview of, 837
 - pairing Bluetooth devices, 845
 - resource contention issues in fast user switching, 143
 - technologies, 837
 - Thunderbolt, 841
 - troubleshooting, 848
 - USB options, 839
- Permissions
 - access control lists (ACLs), 315
 - adding new permission to user or group, 327
 - changing on user account, 337-339
 - changing ownership of, 328
 - creating items with default permissions, 332
 - deleting user or group permissions, 329
 - Disk Utility Repair Permissions, 351
 - drag-and-drop installation and, 501
 - examining as another user, 334-337
 - for nonsystem volumes, 331
 - in hierarchical context, 316
 - managing, 326
 - managing via Finder, 326
 - modifying user or group permissions, 172, 329
 - ownership of, 314
 - propagating folder permissions, 330
 - repairing home folder permissions, 372
 - repairing system file permissions, 367, 371
 - resetting home folder permissions, 352
 - restricting guest accounts, 130
 - securing new items and, 324
 - seeing effects of default permissions, 333
 - Shared folder, 323
 - sharing and, 311
 - sharing files, 319
 - sharing home folder, 320-322
 - sharing-only accounts, 131
 - standard UNIX, 314
 - system permissions, 495
 - testing, 337, 339, 339
 - troubleshooting, 350
 - troubleshooting print system, 881
 - viewing file system permissions, 311-313
- Personal firewalls
 - advanced configuration, 816-818
 - configuring, 815, 828
 - enabling, 828
 - functions of, 814
 - overview of, 814
 - testing settings, 829-831
 - viewing firewall history, 818
 - viewing logs, 831
- Pictures

- home folder content, 159
- verifying user's home folder, 174
- PIDs (Process IDs), 589, 607
- Ping
 - Ping tool
 - finding connection failures and slow downs, 711
 - overview of, 708
 - testing connectivity with, 709, 715-718
 - testing stealth mode, 832
 - troubleshooting network services, 787
- Plug-and-play
 - peripheral support, 837
- Point-to-Point Protocol (see PPP (Point-to-Point Protocol))
- Point-to-Point Protocol over Ethernet (PPPoE), 654
- Point-to-Point Tunneling Protocol (PPTP), 660, 688
- POP (Post Office Protocol)
 - for receiving email, 740
- Port Scan tool
 - overview of, 708
 - scanning Mainserver, 776
 - troubleshooting network ports, 763-765
 - troubleshooting network services, 788, 820
- Portable Document Format (see PDF (Portable Document Format))
- POSIX-style permissions, 314
- POST (Power-On Self-Test), 901
- PostScript Printer Description (PPD), 857, 859
- PostScript printing system
 - Apple use with Macintosh, 857
 - printer drivers and, 859
- Power management
 - optimized, 579
- Power Nap mode
 - backups during, 444
 - sleep modes, 913
- Power-On Self-Test (POST), 901
- PPD (PostScript Printer Description), 857, 859
- PPP (Point-to-Point Protocol)
 - OS X supported network protocols, 655
 - TCP/IP configuration, 665
- PPPoE (Point-to-Point Protocol over Ethernet), 654
- PPTP (Point-to-Point Tunneling Protocol), 660, 688
- Preemptive multitasking
 - process performance features, 578
- PreferencePanes
 - types of system resources, 404
- Preferences
 - automatic updates, 112
 - changing network service order, 686
 - creating and locating preview preferences, 610
 - disabling and restoring, 612
 - file system tags, 424
 - general (see General preferences)
 - Internet accounts (see Internet Account preferences)
 - managed corrupted, 613
 - network (see Network preferences)
 - Printers & Scanners, 860, 863, 877
 - replacing corrupted preference files, 592
 - resolving corrupted, 599
 - sandboxed applications, 598
 - Sharing preferences, 820
 - Spotlight, 433
 - system (see System Preferences)
 - Time Machine, 447
 - trackpad/mouse, 71
 - troubleshooting, 597-599, 610
 - types of system resources, 404
 - viewing and editing, 600
- Preview
 - creating and locating preview preferences, 610
- Preview application
 - app extension uses and benefits, 583
- Print dialog
 - adding printers, 863
 - basic printing, 871
 - detailed settings and presets, 872
 - managing print jobs, 870
 - printing to printer, 888
- Print jobs
 - basic, 871
 - managing, 870
 - settings, 872-874
- Print queues
 - managing, 876-879, 890
 - opening, 867
 - troubleshooting print system, 879
- Printer Command Language (PCL), 859
- Printers
 - Apple supplied drivers, 858
 - configuring Bonjour printers, 882-887
 - configuring directly attached printers, 860
 - configuring local network printers, 861
 - manually configuring, 862-866
 - modifying configuration, 866
 - OS X device classes, 850
 - print to, 887
 - sharing, 795, 868
- Printing
 - configuring, 860, 882
 - configuring Bonjour printers, 882-887
 - configuring directly attached printers, 860
 - configuring local network printers, 861
 - CUPS drivers, 858, 860
 - default settings, 871
 - detailed settings and presets, 872-874
 - examining CUPS logs, 896
 - installing PDF service, 895
 - managing print jobs, 870
 - managing printer queues, 876-879
 - managing with CUPS, 857
 - manually configuring printers, 862, 866
 - modifying existing printer configuration, 866
 - outputting to printers, 887
 - Print system architecture, 857
 - resetting print system, 897
 - sharing printers, 868-870
 - to PDF, 892
 - troubleshooting print system, 879-881
- Privacy
 - Apple Privacy Policy, 431

- Safari privacy, 196
- security and privacy settings, 192-194
- Spotlight preferences and, 433
- Privileges (see Permissions)
- Process Identification (PID), 589, 607
- Processes
 - forcibly quitting, 606
 - monitoring via Activity Monitor, 587-591
 - overview of, 577
 - performance features, 578
 - types of, 578
 - viewing system processes and usage, 609
- Profanity
 - parental control management options, 139
- Profile Manager
 - in MDM, 138
- Profiles
 - energy settings, 80-83
 - for system setup, 55, 56
- Property list files
 - extension for , 597
 - viewing and editing preferences, 600
- Protected memory
 - memory management features, 579
- Protocols
 - network (see Network protocols)
- Proxy autoconfiguration (PAC) files, 673
- Proxy servers
 - configuring, 673-675
 - IP proxies, 655
- Public folders
 - contents of, 157
 - Drop Box as subfolder of, 322
 - home folder content, 159
 - sharing and, 321
 - verifying user's home folder, 174

Q

- Quarantine
 - quarantining files, 497-498
- Quartz imaging system
 - generating PDF documents, 875
- Queries
 - creating custom, 616

- Quick Look
 - overview of, 532
 - plug-ins, 535
 - previewing common file types, 529
 - viewing files with, 555
 - window options, 534

R

- Read & Write
 - access to home folder, 320
 - file and folder permissions, 315
 - permissions hierarchy, 316-319
- Read Only
 - access to home folder, 320
 - file and folder permissions, 315
 - permissions hierarchy, 316-319
- Recovery
 - configuring FileVault recovery, 289
 - of data from nonstarting system, 349
- Recovery disk
 - start up from, 34
- Recovery key
 - as quickest recovery method, 294
 - creating/recording, 298
 - exercise using, 304
 - in FileVault 2, 184
 - loss of, 296
 - options for configuring FileVault recovery, 291
 - resetting passwords, 304
 - unlocking FileVault protected systems, 293
- Registration, of Mac computers, 52
- Reminders application
 - overview of, 742
- Remote Apple events
 - OS X sharing services, 795
- Remote login
 - OS X sharing services, 795
- Remote Management (see ARD (Apple Remote Desktop))
- Repair Disk feature
 - repairing partition table and volume, 362, 369
 - repairing system file permissions, 367, 371
- Repair Permissions feature
 - Disk Utility, 351
- Reports
 - diagnostic, 594
 - in System Information, 59
 - viewing diagnostic reports, 595, 615
- Reset Password utility, 91
 - changing lost passwords, 352
 - FileVault recovery and, 295
 - OS X Recovery, 187, 203
 - repairing home folder permissions, 373
 - resetting home folder permissions, 350
- Resource contention
 - fast user switching and, 142
- Resource passwords
 - types of passwords, 176
- Resources
 - replacing corrupted, 592
 - troubleshooting application resources, 602
- Restart
 - in troubleshooting applications, 591
 - login options, 140
 - user sessions, 915
- Restore
 - deleted accounts, 166
 - deleted contact, 467
 - deleted user accounts, 170-172
 - directly from backup, 470
 - file using Time Machine, 469
 - manually restoring home folders, 164-165
 - previous version of document, 543
 - system volume, 455
 - Time Machine options, 452
 - via Migration Assistant, 454
 - via Time Machine, 97, 452-454, 465
- Resume (see Automatic Resume)
- Retina displays
 - resolution and, 581
- Root accounts
 - administrators enabling, 129
 - bypassing permissions, 311
- Root certificates, types of keychain files, 221
- Routers
 - firewalls and, 814
 - network addresses of, 625
 - role in network communication, 629

- tracert tool for examining network hops, 711
- S**
- Safari
 - checking VPN connectivity, 692
 - managing keychain items, 223
 - observing network problem, 714
 - overview of Safari 8, 737
 - parental control management options, 139
 - privacy and, 196
 - testing managed accounts, 156
 - testing Web access, 683, 722
 - troubleshooting network applications, 765
 - unarchiving zip files, 502
 - Safe Boot
 - startup shortcut for, 918
 - troubleshooting kernel, 921
 - troubleshooting launchd, 922
 - Safe Sleep
 - sleep modes, 912
 - Sandboxing
 - application sandbox containers, 406-408
 - application sandboxing, 496
 - preferences, 598
 - SATA (Serial ATA), 355
 - SATA disks
 - inspecting physical storage, 345
 - Save As, 540
 - (see also Auto Save and Versions)
 - process of, 540
 - Scanning
 - configuring, 860
 - managing, 868
 - scanners as OS X device class, 850
 - sharing scanners, 795
 - Schedule
 - Time Machine, 443
 - Screen sharing
 - architecture, 797
 - connecting to virtual display, 825-827
 - connecting via, 799-802
 - defined, 794
 - enabling, 798, 821
 - overview of, 796
 - remotely controlling another computer's screen, 823-825
 - remotely controlling another Mac, 802
 - via Messages application, 803-805
 - Searches, 427
 - (see also Spotlight)
 - advanced, 431-433
 - App Store, 478
 - creating custom search query, 616
 - for documents, 439
 - results of Spotlight search, 428
 - simple Spotlight search, 427
 - Spotlight plug-ins and, 430
 - Secure erase
 - entire disk, 284
 - free space on volumes, 282
 - of files, 258-260
 - options, 257
 - Secure File Transfer Protocol (SFTP), 795
 - Secure memory allocation
 - memory management features, 580
 - Secure Shell (SSH), 795
 - Secure Sockets Layer (SSL), 737
 - Security
 - application security (see Application security)
 - Spotlight security, 431
 - Security & Privacy
 - advanced settings, 190
 - configuring personal firewalls, 815
 - enabling FileVault and, 289
 - enabling users for FileVault, 292
 - FileVault settings, 190-192
 - FileVault tab, 292, 302
 - firewall settings, 192
 - general settings, 189
 - privacy settings, 192-194
 - turning off automatic sending of diagnostic reports to Apple, 595
 - turning on FileVault, 296
 - Security Code
 - iCloud keychains, 230, 232
 - Serial ATA (SATA)
 - internal disks, 355
 - Server Message Block (see SMB (Server Message Block))
 - Servers
 - downloading application from Mainserver, 517
 - Service set identifier (see SSID (service set identifier))
 - Services for Macintosh (SFM), 768
 - Sessions (see User sessions)
 - Settings
 - documenting critical settings during upgrade, 11
 - documenting network settings, 28
 - Setup Assistant
 - accepting Apple terms and conditions, 48
 - Apple ID authentication, 46-47
 - configuring OS X system, 60-63
 - country and keyboard settings, 44
 - creating user accounts, 128
 - diagnostic and usage information, 51
 - enabling FileVault and, 289
 - enabling Keychain feature, 50
 - FileVault settings, 50
 - Find My Mac feature, 47
 - iCloud settings, 47
 - migration or transfer settings, 45
 - network settings, 45
 - new user accounts, 134
 - overview of, 43
 - setting up computer account, 48-50
 - SFM (Services for Macintosh), 768
 - SFTP (Secure File Transfer Protocol), 795
 - Share button
 - in Quick Look, 534
 - Share menu
 - app extension uses and benefits, 582
 - Sharing
 - home folders, 319-322
 - permissions for, 319
 - preferences, 820
 - printers, 868
 - searching shared files, 429
 - Sharing & Permissions
 - changing permissions, 325
 - viewing permissions, 312
 - Sharing-only accounts
 - overview of, 131
 - Shortcuts

- comparing types of, 383
 - file system (see File system shortcuts)
- Shutdown
 - login options, 140
 - overview of, 915
 - troubleshooting, 923
- Simple Mail Transfer Protocol (SMTP), 740
- Single-user mode
 - startup shortcut for, 918
 - troubleshooting startup issues, 925
- Sites (see Websites)
- Sleep modes
 - energy settings, 792
 - login options, 140
 - Power Nap, 913
 - Safe Sleep and Standby, 912, 912
 - system sleep preventing back-ups, 443
- Slideshows
 - viewing with Quick Look, 535
- SMART (self-monitoring, analysis, and reporting technology), 343
- Smart Folders
 - advanced searches and, 432
- SMB (Server Message Block)
 - browsing to SMB share, 777
 - manually connecting to, 755
 - manually connecting to file services, 755
 - OS X supported file service protocols, 750
 - overview of, 730
 - printer sharing, 864
- SMC (System Management Controller), 13
- SMTP (Simple Mail Transfer Protocol), 740
- Snapshots
 - making Time Machine snapshot, 465
 - Time Machine supporting local, 443
- Software
 - compatibility issues, 591
 - compatibility issues related to 64-bit mode, 580
 - installing (see Application installation)
 - installing open source software, 494
 - network services, 727
 - removing installed, 504
 - updating Apple software, 11
 - updating installed, 503
 - verifying application compatibility, 10
- Software updates
 - advanced Installer features, 116
 - App Store updates list, 109-112
 - Apple software, 12
 - automatic, 107-109, 112
 - checking installed updates, 124
 - checking System Preferences for App Store, 122
 - downloading from Internet, 120
 - from App Store, 122-124
 - installation history, 117
 - installing, 120
 - installing single update, 111
 - manually installing, 114, 118
 - overview of, 107
 - troubleshooting peripherals, 853
 - with Installer, 115
- Spotlight
 - advanced searches, 431-433
 - indexed metadata, 429-430
 - locating troubleshooting utilities with, 707
 - overview of, 427
 - plug-ins, 430
 - preferences, 433-434
 - restore process and, 453
 - search results, 428
 - searching for documents, 439
 - security, 431
 - simple search, 427
- SSH (Secure Shell), 795
- SSID (service set identifier)
 - joining invisible network, 641
 - Wi-Fi and, 635
 - Wi-Fi connectivity issues and, 702
- SSL (Secure Sockets Layer), 737
- Standard accounts
 - creating, 145-149
 - login with Apple ID, 133
 - managing, 145
 - overview of, 128
- Standards
 - integration of OS X Yosemite via, 4
- Standby
 - sleep modes, 912
- Startup, 899
 - (see also System initialization)
 - examining system startup, 924
 - from OS X Recovery, 87, 93
 - identifying steps in startup process, 924
 - modifying, 917
 - Startup items as system resources, 404
 - utilities, 918
- Startup disks
 - recovery utilities, 90
 - repartitioning without erasing, 268
 - verifying startup disk and restart option, 98
- Startup Manager
 - selecting alternate system at startup, 917
- Startup shortcuts
 - firmware initialization and, 903
 - modifying startup, 917
 - overview of, 916
 - selecting alternate system, 917
- Stealth mode
 - testing, 832
- Storage, 252
 - (see also File systems)
 - Core Storage, 250
 - examining local storage, 353
 - examining with Disk Utility, 342
 - examining with System Information, 344
 - fast user switching issues, 143
 - file systems and, 245, 246
 - viewing mounted volumes, 356
- Storage devices
 - OS X device classes, 849
- Storage tab
 - About This Mac window, 454
- Student materials
 - connecting to file server (Main-server), 73
 - copying StudentMaterials folder to computer, 74-76
 - direct download when there is not access to a file server, 76-79
 - drag-and-drop application from, 518
 - installing updates, 118
 - overview of, 73
- Subnet masks

- IP addresses and, 625
- TCP/IP configuration, 667
- Swap usage
 - monitoring via Activity Monitor, 591
- Symbolic links
 - comparing types of file system shortcuts, 385
- Symmetric multiprocessing
 - process performance features, 578
- System Administrator
 - root account and, 131
- System disk
 - preparing, 14
- System file
 - repairing system file permissions, 367, 371
- System folder
 - examining hidden folders, 399
 - in OS X file structure, 402
- System Information (System Profiler)
 - About This Mac window, 57-58, 83-85
 - checking hardware, firmware, and application compatibility, 23
 - checking hardware, firmware, and application compatibility, 23-28
 - checking installed updates, 124
 - examining external USB devices, 856
 - examining internal devices, 854
 - examining peripheral buses, 838
 - examining peripherals, 854
 - examining storage, 344
 - monitoring applications, 586
 - overview of, 57
 - reporting options, 59
 - troubleshooting peripherals, 853
 - update installation history, 117
 - updating firmware, 13
 - verifying application compatibility, 10
 - verifying installation requirements, 7
 - viewing disk information, 354-356
 - viewing installed applications, 522
- System initialization
 - booter process, 904
 - examining startup, 924
 - firmware, 901-903
 - identifying steps in startup process, 924
 - kernel, 905
 - launchd, 905-906
 - overview of, 899
 - single-user mode, 925, 927
 - starting up in Verbose mode, 926
 - startup shortcut for selecting alternate system, 917
 - troubleshooting (see Troubleshooting system)
 - troubleshooting booter, 920
 - troubleshooting firmware, 919
 - troubleshooting kernel, 921
 - troubleshooting launchd, 922
- System logs
 - viewing, 615
- System Management Controller (SMC), 13
- System permissions
 - process security and, 495
- System Preference
 - trackpad/mouse, 71
- System Preferences
 - 64-bit vs. 32-bit mode and, 582
 - adjusting account preferences, 151
 - App Store, 122
 - automatic updates and, 112
 - Bluetooth, 845
 - creating admin account, 63-65
 - Dictation & Speech preferences, 195
 - documenting network settings, 28
 - energy settings, 912
 - examining account preferences, 151-153
 - examining default behaviors, 573
 - experimenting with preferences, 575
 - Finder preferences, 66-69
 - Language & Region preferences, 44
 - managing Bluetooth settings, 847
 - managing network connectivity via network preferences, 644
 - overview of, 52
 - Parental Controls, 154
 - resetting printing system, 897
 - setting computer name, 69-71
 - startup disk options, 902
 - systemwide effect, 53
 - Time Machine, 447
 - turning off Auto Save, 576
 - turning on FileVault, 296-300
 - Users & Groups preferences, 132
- System processes
 - viewing, 609
- System resource domain, 405
- System resources
 - adding font for single user, 416-418
 - application group containers, 408
 - application sandbox containers, 406-408
 - confirming font unavailable to other users, 418
 - disabling fonts via Font Book, 412
 - fonts, 410
 - hierarchy of, 404
 - installing fonts via Font Book, 410-412
 - managing fonts, 414
 - OS X file structure, 401-402
 - overview of, 401
 - removing a font, 415-416
 - resolving font issues, 413
 - troubleshooting, 409
 - types of, 402-404
 - validating fonts, 419
- System security
 - changing passwords, 177-180
 - changing user passwords, 214
 - dictation feature, 195
 - Find My Mac feature, 197-200
 - firewall settings, 192
 - firmware passwords, 200-202
 - master passwords, 181
 - methods for resetting passwords, 182-185
 - overview of, 175
 - Password Assistant, 180
 - password types, 175-177

- privacy settings, 192
 - removing firmware passwords, 217
 - resetting account passwords in OS X Recovery, 202-205
 - resetting keychain passwords, 185
 - resetting legacy FileVault passwords, 185
 - resetting master password, 186
 - resetting OS X Recovery password, 187
 - resetting user passwords, 206-209
 - reverifying keychain synchronization, 215
 - Safari privacy, 196
 - Security & Privacy advanced settings, 190
 - Security & Privacy general settings, 189
 - setting firmware passwords, 216
 - synchronizing keychain passwords, 211
 - testing firmware passwords, 216
 - verifying synchronization of keychain passwords, 212
 - System volume
 - restoring, 455
 - troubleshooting, 919
- T**
- Tags
 - file system, 423-425
 - using tag metadata, 435
 - Target disk mode
 - manual examination of files, 365
 - recovering data from nonstarting system, 349
 - repairing partitions and volumes, 360
 - starting computer in, 361
 - troubleshooting and, 347
 - TCP (Transmission Control Protocol)
 - overview of, 626
 - TCP ports in network communications, 728
 - TCP/IP protocol suite
 - checking network status and, 701
 - configuring, 627
 - DHCP in configuration of, 631
 - manual configuration, 665-668
 - OS X supported network protocols, 655
 - overview of, 626
 - Terminal
 - administrative accounts using to bypass account restrictions, 129
 - creating hard links in, 386
 - hiding items and, 378
 - preventing ejection of volumes, 266
 - repairing home folder permissions, 372
 - resetting passwords, 91, 203
 - Testing
 - firewall settings, 829
 - Gatekeeper settings, 519
 - managed accounts, 155-156
 - OS X install disk, 104
 - permissions, 337, 339
 - purchased apps, 512
 - stealth mode, 832
 - Web access, 683, 722
 - Text
 - creating text documents, 274
 - Texting
 - Messages application for, 746-749
 - Third-party software
 - removing, 504
 - updating, 503
 - Threads
 - monitoring, 588
 - Thumbnails of slides
 - previewing in Quick Look, 535
 - Thunderbolt
 - hardware interface, 651
 - peripherals and, 841
 - supported hardware network interfaces, 652
 - target disk mode support, 348
 - Time Capsule
 - backing up to, 463
 - security of, 442
 - Time Machine
 - architecture, 441
 - backing up data prior to upgrade, 11, 29
 - backup format, 444
 - configuring, 445-447, 459
 - configuring backup disks, 448-451
 - configuring exclusions, 460-463
 - creating recovery disk, 88
 - deleting contact imported from vCard, 466
 - disks, 442-443
 - examining, 97
 - importing vCards into contacts, 464
 - indexing Time Machine volumes, 429
 - limitations of, 445
 - making new snapshot, 465
 - manually restoring home folders, 164-165
 - manually restoring via Finder, 457-458
 - migrating information between computers, 161
 - options, 451
 - OS X Installer support, 20
 - overview of, 441
 - preferences, 447
 - restoring deleted contact, 467
 - restoring directly from backup, 470
 - restoring entire system, 455
 - restoring file with, 469
 - restoring from, 90, 452-454, 465
 - restoring via Migration Assistant, 454
 - schedule, 443
 - selecting backup volume, 463-464
 - Time-limits
 - parental control management options, 139
 - TLDs (top-level domains), 630
 - Today view
 - app extension uses and benefits, 583
 - Notification Center, 585
 - Top-level domains (TLDs), 630
 - Traceroute tool
 - checking network connections, 711
 - overview of, 708
 - Trackpad preferences, 71
 - Transmission Control Protocol (see TCP (Transmission Control Protocol))
 - Trash
 - removing software by dragging to, 504

- Troubleshooting
 - file systems (see File systems, troubleshooting)
 - file-sharing services, 767
 - OS X Installer, 21
 - printing, 879-881
 - system resources, 409
 - Troubleshooting applications
 - corrupted preferences, 599
 - diagnostic reports, 594
 - forcibly quitting, 593
 - overview of, 591
 - preference troubleshooting, 597-599
 - viewing and editing preferences, 600
 - viewing diagnostics via Console, 595
 - Troubleshooting network services
 - exercise in, 784
 - overview of, 762
 - Port Scan tool, 763-765
 - troubleshooting Mail application with Mail.app Connection Doctor, 785
 - turning off Mail service in troubleshooting exercise, 784
 - with Network Utility, 787-790
 - Troubleshooting networks
 - breaking settings in troubleshooting exercise, 713
 - checking network preference status, 701
 - checking network status, 714
 - common issues, 701
 - DHCP service issues, 705
 - DNS service issues, 706
 - Ethernet connectivity issues, 701
 - getting interface information with Network Utility, 708
 - isolating three general areas, 700
 - Lookup tool for verifying DNS lookup, 710, 721
 - monitoring network traffic, 722
 - Network Diagnostics Assistant, 706, 718-721
 - Network Utility, 707
 - overview of, 699
 - ping for testing connectivity, 709, 715-718
 - resetting network after troubleshooting exercise, 723
 - testing Web access, 722
 - traceroute tool for checking connections, 711
 - Wi-Fi connectivity issues, 702-705
 - Troubleshooting peripherals
 - device drivers, 850
 - general troubleshooting, 853
 - inspecting kernel extensions, 852
 - overview of, 848
 - peripheral device classes, 849
 - Troubleshooting printing
 - examining CUPS logs, 896
 - prerequisites, 896
 - resetting system, 897
 - Troubleshooting shared (hosted) services
 - communication issues, 820
 - network service access issues, 820
 - overview of, 819
 - Troubleshooting system initialization
 - booter issues, 920
 - firmware, 919
 - kernel issues, 921
 - launchd, 922
 - overview of, 919
 - single-user mode, 925, 927
 - starting up in Verbose mode, 926
 - Troubleshooting user sessions
 - logout and shutdown, 923
 - overview of, 923
 - Safe mode login, 923
- ## U
- UDP (User Datagram Protocol)
 - overview of, 626
 - UDP ports in network communication, 728
 - UFS (UNIX File System), 249
 - Uninstaller
 - removing applications with, 525
 - removing software, 504
 - Universal Access
 - accessibility preferences, 194
 - Universal Disk Format (UDF)
 - volume formats, 250
 - Universal Type Server
 - in font management, 411
 - Universally Unique ID (UUID)
 - creating and verifying user accounts, 173
 - types of keychain files, 220
 - user account attributes, 137
 - UNIX
 - access control lists (ACLs), 315
 - file system shortcuts and, 383
 - foundation of OS X, 127
 - hidden items and, 377
 - installing UNIX applications, 491
 - process security and, 495
 - standard permissions, 314
 - X Window System and, 493
 - UNIX File System (UFS), 249
 - Updates, 487
 - (see also Software updates)
 - App Store, 487
 - firmware, 903
 - of installed software, 503
 - troubleshooting peripherals, 853
 - Upgrade installation
 - backing up files and folders prior to, 11
 - checking hardware, firmware, and application compatibility, 23-28
 - documenting settings, 11
 - downloading Installer from App Store, 30
 - preparing for, 7, 9
 - preparing Macs for, 23
 - preparing system disk, 14
 - prerequisites, 30
 - process of, 31
 - requirements, 8
 - updating Apple software, 11
 - updating firmware, 12-14
 - verifying application compatibility, 10
 - verifying installation requirements, 7-9
 - vs. clean install, 19
 - USB
 - cellular network adapters, 653
 - examining internal devices, 855
 - power issues, 853
 - supported hardware network interfaces, 652
 - versions, 839
 - USB 1.1, 840
 - USB 2.0, 840
 - USB 3.0, 840

- User & Groups preferences
 - changing master password, 182
 - creating and verifying user accounts, 172
 - creating managed account with parental controls, 153, 155
 - creating new user account, 165
 - creating user accounts, 133
 - deleting user accounts, 169
 - examining account preferences, 151-153
 - login options, 140-141
 - overview of, 132
 - Reset Password option, 182
 - restoring user password, 307
 - turning on fast user switching, 141
 - unlocking preferences, 146
 - user account attributes, 135-137
 - User accounts
 - adjusting preferences, 150
 - administrative accounts, 129
 - attributes, 135-137
 - changing permissions, 337
 - creating, 133
 - creating and verifying , 172
 - creating home folder, 166-169
 - creating managed account with parental controls, 153-155
 - creating new administrator account, 929
 - creating standard account, 145-149
 - deleting, 159-161, 169
 - enabling users for FileVault, 291
 - examining preferences, 151-153
 - fast user switching, 141
 - fast user switching issues, 142-144
 - guest accounts, 130
 - limiting access to App Store, 489
 - local group accounts, 131
 - logging into new account, 149
 - login options, 140-141
 - managing, 132, 145
 - network service access issues, 820
 - overview of, 127
 - parental controls, 138-139
 - restoring , 166, 170-172
 - root account, 131
 - Setup Assistant, 134
 - sharing-only accounts, 131
 - standard accounts, 128
 - storing files and folders in home folder, 333
 - testing managed accounts, 155-156
 - trying another account in troubleshooting, 592
 - types of, 128
 - Users & Groups preferences, 132
 - User Datagram Protocol (see UDP (User Datagram Protocol))
 - User environment
 - stages of user sessions, 907
 - user sessions and, 910
 - User home folders (see Home folders)
 - User ID
 - creating and verifying user accounts, 173
 - user account attributes, 136
 - User resource domain, 405
 - User sessions
 - launchd, 908
 - login window, 907
 - logout, 914
 - overview of, 907
 - Power Nap mode, 913
 - Safe mode login, 923
 - Safe Sleep and Standby modes, 912
 - shutdown and restart, 915
 - sleep modes, logout, and shutdown, 910
 - troubleshooting, 923
 - troubleshooting logout and shutdown, 923
 - user environment and, 910
 - Users folder
 - in OS X file structure, 402
 - Utilities
 - from OS X Recovery, 89-92
- V**
- vCards
 - deleting contact imported from, 466
 - importing into contacts, 464
 - Verbose mode
 - start up in, 926
 - startup shortcut for, 918
 - troubleshooting kernel, 921
 - troubleshooting launchd , 922
 - Verify and Repair
 - in Disk Utility, 346
 - Versions, 562
 - (see also Auto Save and Versions)
 - managing, 541-543
 - working with multiple, 562
 - Video
 - OS X device classes, 850
 - previewing with Quick Look, 535
 - Virtual display
 - connecting to, 825-827
 - Virtual Network Computing (see VNC (Virtual Network Computing))
 - Virtual Private Networks (see VPNs (Virtual Private Networks))
 - VLANs (virtual LANs)
 - OS X support for virtual network services, 654
 - VMware Fusion
 - third-party virtualization tools, 654
 - VNC (Virtual Network Computing), 730
 - controlling access with password, 799
 - options for screen sharing, 799
 - screen sharing based on, 797
 - VoiceOver audible assistant
 - login options, 141
 - Volumes, 267
 - (see also Hard disks)
 - ejecting in-use, 266
 - ejecting volumes as local admin, 275
 - encrypting, 278
 - encrypting in Finder, 279
 - encrypting system volumes, 292
 - erasing, 256-258
 - formats, 247
 - improper unmount or eject, 267
 - mounting, unmounting, ejecting , 263
 - permissions for nonsystem volumes, 331
 - repairing in OS X Recovery mode, 368
 - repairing in target disk mode, 360
 - resizing, adding, deleting with Disk Utility, 255

- restoring system volume, 455
- securely erasing free space on, 282
- selecting backup volume, 463-464
- troubleshooting, 346
- troubleshooting system volume, 919
- turning off encryption on Mac HD volumes, 308
- user ejecting, 277
- VPNs (Virtual Private Networks)
 - checking connectivity, 692
 - configuration profile, 661
 - configuring, 688
 - configuring VPN service, 689-691
 - connecting to, 688
 - establishing VPN connections, 664
 - manual configuration, 661-664
 - OS X support for virtual network services, 654
 - overview of, 660

W

- WANs (wide area networks)
 - WAN traffic, 628
- Web Proxy Autodiscovery Protocol (WPAD), 673
- WebDAV
 - as extension of HTTP, 743
 - manually connecting to, 756
 - manually connecting to file services, 755
 - OS X supported file service protocols, 750
- Websites
 - home folder content, 159
- WEP (Wired Equivalent Privacy)
 - Wi-Fi authentication, 636
- Whois tool
 - finding owners of DNS domain names, 708
- Wi-Fi

- adding network to preferred list
 - by joining it, 697
- adding network to preferred list manually, 696
- advanced configuration, 669-670, 693
- authentication, 635
- basic configuration, 634
- clearing preferred network list, 695
- configuring OS X system, 61
- connectivity issues, 702
- creating Wi-Fi-only locations, 693
- joining invisible network, 641
- joining visible network, 641
- Location Services and, 193
- OS X supported network protocols, 655
- PANs (personal area networks), 653
- peer-to-peer sharing via Air-Drop, 808
- status indicators, 645
- status menu options, 637
- supported hardware network interfaces, 652
- testing preferred network order, 697
- verifying connectivity, 642
- verifying network settings, 639
- Wi-Fi Protected Access (WPA) (see WPA (Wi-Fi Protected Access))
- Wide area networks (see WANs (wide area networks))
- Widgets
 - in Today view, 586
- Windows PCs
 - migrating information between computers, 162
- WINS (Windows Internet Naming Service)
 - network host addressing, 731
- OS X supported network protocols, 655

- overview of, 671
- Wired Equivalent Privacy (WEP)
 - Wi-Fi authentication, 636
- Wireless Diagnostics
 - troubleshooting Wi-Fi issues, 703
- wireless networking (see Wi-Fi)
- Wireless, System Preferences, 53
- WPA (Wi-Fi Protected Access)
 - automatic enterprise configuration, 636
 - Wi-Fi authentication, 636
- WPAD (Web Proxy Autodiscovery Protocol), 673
- Write Only
 - folder-level permissions, 315

X

- X Window System
 - installing X Window applications, 493
- Xcode
 - editing property list files, 601
 - Xcode Developer Tools, 591
- XML (Extensible Markup Language), 600
- XMPP (Extensible Messaging and Presence Protocol)
 - private messaging services based on, 749
- XTS-AES 128 Encryption
 - in FileVault 2, 287

Z

- Zeroconf standard
 - Bonjour and, 730
- Zip archives
 - comparing archiving technologies, 389
 - creating, 389
 - expanding, 391
 - installing drag-and-drop items, 502
 - overview of, 389