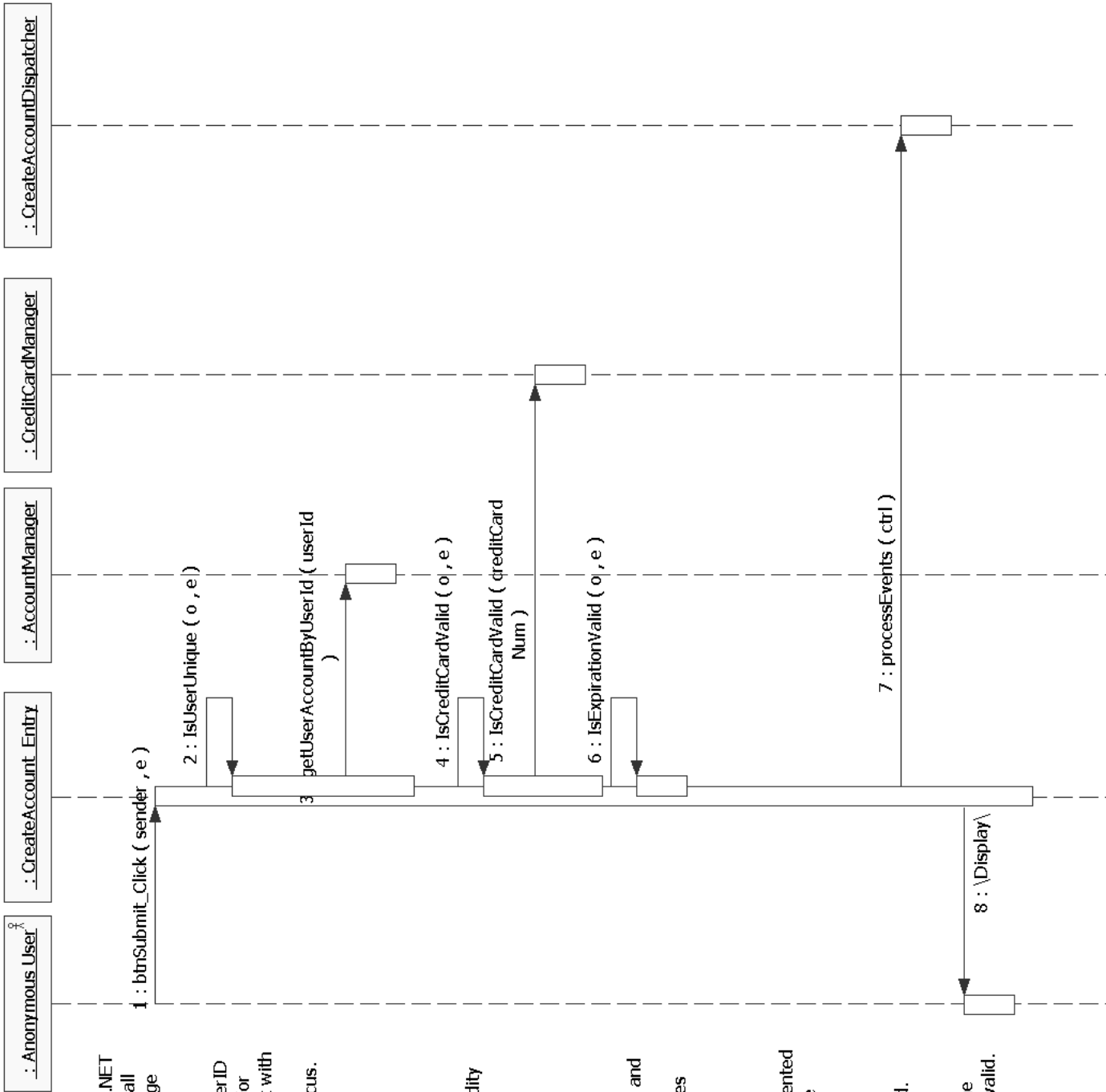


Figure 10-7: Collaboration detail: CreateAccount_Entry validation.



Upon Submit, btnSubmit_Click invokes the .NET Page.IsValid operation, which verifies that all custom validators are satisfied with the page data.

IsUserUnique validator verifies that the UserID entered does not yet exist in the system. For that, it attempts to retrieve a user account with that UserID. This validator is also called anytime the Username control loses the focus.

IsCreditCardValid validator verifies the validity of the credit card entered, by requesting validation from the CreditCardManager.

IsExpirationValid validator verifies that the credit card expiration data is between now and plus 5 years. This validator is also called anytime the credit card number control loses the focus.

Other validators are defined, as part of the default set from .NET. They are not represented as they do not involve interactions with the design objects. These validators are called anytime a control loses the focus.

All validations (default and custom) passed.

At least a validator is in error. Redisplay the page with messages on which fields are invalid.